

Product datasheet for RC217290

RHBL3 (RHBDL3) (NM_138328) Human Tagged ORF Clone

Product data:

Product Type:	Expression Plasmids
Product Name:	RHBL3 (RHBDL3) (NM_138328) Human Tagged ORF Clone
Tag:	Myc-DDK
Symbol:	RHBL3
Synonyms:	RHBDL4; VRHO
Mammalian Cell Selection:	Neomycin
Vector:	pCMV6-Entry (PS100001)
E. coli Selection:	Kanamycin (25 ug/mL)
ORF Nucleotide Sequence:	>RC217290 ORF sequence Red=Cloning site Blue=ORF Green=Tags(s)

TTTTGTAATACGACTCACTATAGGGCGGCCGGAATTCGTCGACTGGATCCGGTACCGAGGAGATCTGCC
GCC**CGATCGCC**

ATGGGCGAGCACCCAGCCCGGGCCCCGCGGTGGCCGCCTGCGCCGAGGCGGAGCGCATCGAGGAGCTGG
AACCCGAGGCCGAGGAGCGGCTGCCCGCGGCCGAGGACCCTGGAAAGTCTGTTTATCAGTTTGA
CCCTGGGAACACAGGCTACATTAGCACAGGCAAGTTCCGGAGTCTTCTGGAGAGCCACAGCTCCAAGCTG
GACCCGCACAAAAGGGAGGTCTCCTGGCTCTTCCGACAGCCACGCGGATGGGCAGATCGGCTACCAGG
ATTTTGTGAGCCTAATGAGCAACAAGCGTTCCAACAGCTTCCGCCAAGCCATCCTGCAGGGCAACCGCAG
GCTAAGCAGCAAGGCCCTGCTGGAGGAGAAGGGGCTGAGCCTCTCGCAGCGACTTATCCGCCATGTGGCC
TATGAGACCCTGCCCCGGGAAATTGACCGCAAGTGGTACTATGACAGCTACACCTGCTGCCCCCACCT
GGTTATGATCACAGTCACGCTGCTGGAGTTGCCTTTTTCTCTACAATGGGGTGTCACTAGGTCAATT
TGTAAGTGCAGGTAACCTACCCAGTTACTTGAAGAAGTCCCTGGTTTACCACCCACAGCTGCGAGCACAG
GTTTGGCGCTACCTGACATACATCTTATGCATGCAGGGATAGAACACCTGGGACTCAATGTGGTGTGCTG
AGCTGCTGGTGGGGTGCCCTGGAGATGGTGCATGGAGCCACCGAATTGGGCTGTCTACGTGGCCGG
TGTTGTGGCAGGGTCCTTGGCAGTGTCTGTGGCTGACATGACCGCTCCAGTCGTGGGCTCTTCTGGAGGG
GTGTATGCTCTCGTCTGCCCCATCTGGCCAACATTGTGATGAAGTGGTCAAGTGGCAGTTCA
AGCTGCTGCGGATGGCTGTGGCCCTTATCTGTATGAGCATGGAGTTTGGGCGGGCCGTGTGGCTCCGCTT
CCACCCGTCGGCCTATCCCCGTCGCCCTCACCCAAGCTTTGTGGCGCACTTGGGTGGCGTGGCCGTGGGC
ATCACCTGGGCGTGGTGGTCTGAGGAACTACGAGCAGAGGCTCCAGGACCAGTCACTGTGGTGGATTT
TTGTGGCCATGTACACCGTCTTCGTGCTGTTTCGCTGTCTTCTGGAACATCTTTCCTACACCTGCTGGA
CTTAAAGCTGCCGCTCCCCC

ACGCGTACGCGGCCGCTCGAGCAGAACTCATCTCAGAAGAGGATCTGGCAGCAAATGATATCCTGGATT
ACAAGGATGACGACGATAAGGTTTAA



[View online »](#)

Protein Sequence: >RC217290 protein sequence
Red=Cloning site Green=Tags(s)

MGEHPSGPAVAACAEERIEELEPEAEERLPAAPEDHWKVLFDQFDPGNTGYISTGKFRSLLESHSKL
 DPHKREVLALADSHADGQIGYQDFVSLMSNKRNSFRQAILQGNRRLSSKALLEEKGLSLSQRLIRHVA
 YETLPREIDRWYYDSYCCPPWFMITVTLLEVAFFLYNGVSLGQFVLQVTHPRYLKNSLVYHPQLRAQ
 VWRYLTYIFMHAGIEHLGLNVVLQLLVGVPLEMVHGATRIGLVYVAGVAVAGSLAVSVADMTAPVVGSSGG
 VYALVSAHLANIVMNWSGMKCCQFKLLRMAVALICMSMEFGRAVWLRFHPSAYPPCPHPSFVAHLGGVAVG
 ITLGVVLRNYEQRLQDQSLWWIFVAMYTVFVLFVAVFVWIFAYTLLDLKLP PPP

TRTRPLEQKLISEEDLAANDILDYKDDDDKV

Chromatograms: https://cdn.origene.com/chromatograms/mk6450_b12.zip

Restriction Sites: SgfI-MluI

Cloning Scheme:



* The last codon before the Stop codon of the ORF

ACCN: NM_138328

ORF Size: 1212 bp

OTI Disclaimer: The molecular sequence of this clone aligns with the gene accession number as a point of reference only. However, individual transcript sequences of the same gene can differ through naturally occurring variations (e.g. polymorphisms), each with its own valid existence. This clone is substantially in agreement with the reference, but a complete review of all prevailing variants is recommended prior to use. [More info](#)

OTI Annotation: This clone was engineered to express the complete ORF with an expression tag. Expression varies depending on the nature of the gene.

Components: The ORF clone is ion-exchange column purified and shipped in a 2D barcoded Matrix tube containing 10ug of transfection-ready, dried plasmid DNA (reconstitute with 100 ul of water).

Reconstitution Method:

1. Centrifuge at 5,000xg for 5min.
2. Carefully open the tube and add 100ul of sterile water to dissolve the DNA.
3. Close the tube and incubate for 10 minutes at room temperature.
4. Briefly vortex the tube and then do a quick spin (less than 5000xg) to concentrate the liquid at the bottom.
5. Store the suspended plasmid at -20°C. The DNA is stable for at least one year from date of shipping when stored at -20°C.

Note: Plasmids are not sterile. For experiments where strict sterility is required, filtration with 0.22um filter is required.

RefSeq: [NM_138328.3](#)

RefSeq Size: 4688 bp

RefSeq ORF: 1215 bp

Locus ID: 162494

UniProt ID: [P58872](#)

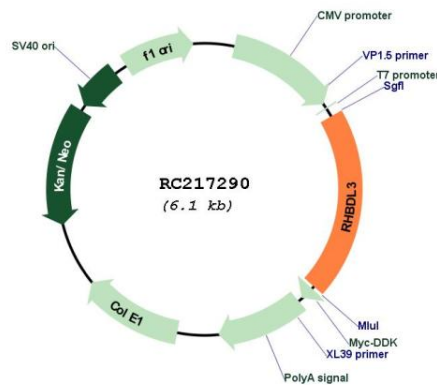
Cytogenetics: 17q11.2

Protein Families: Transmembrane

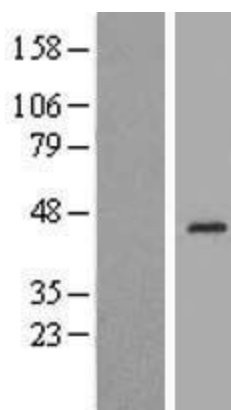
MW: 45.2 kDa

Gene Summary: May be involved in regulated intramembrane proteolysis and the subsequent release of functional polypeptides from their membrane anchors.[UniProtKB/Swiss-Prot Function]

Product images:



Circular map for RC217290



Western blot validation of overexpression lysate (Cat# [LY408709]) using anti-DDK antibody (Cat# [TA50011-100]). Left: Cell lysates from untransfected HEK293T cells; Right: Cell lysates from HEK293T cells transfected with RC217290 using transfection reagent MegaTran 2.0 (Cat# [TT210002]).