

## Product datasheet for **RC217286**

### Frizzled 4 (FZD4) (NM\_012193) Human Tagged ORF Clone

#### Product data:

Product Type:	Expression Plasmids
Product Name:	Frizzled 4 (FZD4) (NM_012193) Human Tagged ORF Clone
Tag:	Myc-DDK
Symbol:	Frizzled 4
Synonyms:	CD344; EVR1; FEVR; Fz-4; Fz4; FZD4S; FzE4; GPCR; hFz4
Mammalian Cell Selection:	Neomycin
Vector:	pCMV6-Entry (PS100001)
E. coli Selection:	Kanamycin (25 ug/mL)



[View online »](#)

**ORF Nucleotide Sequence:**

>RC217286 representing NM\_012193  
 Red=Cloning site Blue=ORF Green=Tags(s)

TTTTGTAATACGACTCACTATAGGGCGGCCGGGAATTCGTCGACTGGATCCGGTACCGAGGAGATCTGCC  
 GCC**GCGATCGCC**

ATGGCCTGGCGGGGCGCAGGGCCGAGCGTCCCGGGGGCGCCCGGGGGCGTGGTCTCAGTCTGGGGTTGC  
 TCCTGCAGTTGCTGCTGCTCCTGGGGCCGGCGCGGGGCTTCGGGGACGAGGAAGAGCGGCCGCTGCGACCC  
 CATCCGCATCTCCATGTGCCAGAACCTCGGCTACAACGTGACCAAGATGCCAACCTGGTTGGGCACGAG  
 CTGCAGACGGACGCCGAGCTGCAGCTGACAACCTTACACCGCTCATCCAGTACGGCTGCTCCAGCCAGC  
 TGCAGTCTTCTTTGTTCTGTTATGTGCCAATGTGCACAGAGAAGATCAACATCCCCATTGGCCCATG  
 CGGCGGCATGTGCTTTTCAGTCAAGAGACGCTGTGAACCCGCTCCTGAAGGAATTTGGATTGCTGGCCA  
 GAGAGTCTGAAGTGCAGCAAATCCCACCACAGAACGACCACAACCACATGTGCATGGAAGGGCCAGGTG  
 ATGAAGAGGTGCCCTTACCTCACAAAACCCCATCCAGCCTGGGGAAGAGTGTCACTCTGTGGGAACCAA  
 TTCTGATCAGTACATCTGGGTGAAAAGGAGCCTGAACTGTGTGCTCAAGTGTGGCTATGATGCTGGCTTA  
 TACAGCCGCTCAGCCAAGGAGTTCACTGATATCTGGATGGCTGTGTGGCCAGCCTGTGTTTCATCTCCA  
 CTGCCCTCACAGTACTGACCTTCTGATCGATTCTTAGGTTTTCTACCTGAGCGCCCCATCATATT  
 TCTCAGTATGTGCTATAATTTATAGCATTGCTTATATTGTGAGGCTGACTGTAGGCCGGGAAAGGATA  
 TCCTGTGATTTTGAAGAGGCAGCAGAACCTGTTCTCATCCAAGAAGGACTTAAGAACACAGGATGTGCAA  
 TAATTTTCTTGCTGATGTACTTTTTTGGAAATGGCCAGTCCATTTGGTGGGTTATTTGACACTCACTTG  
 GTTTTTGGCAGCAGGACTCAAATGGGGTCATGAAGCCATTGAAATGCACAGCTCTATTTCCACATTGCA  
 GCCTGGCCATCCCCGCAGTAAAACCATTTGCATCTTGATTATGAGACTGGTGGATGCAGATGAAGTGA  
 CTGGCTGTGCTATGTTGGAAACCAAAATCTCGATGCCCTCACCGGGTTCTGGTGGCTCCCTCTTTAC  
 TATTTGGTCATTGGAACCTTTGTTTCATTGCTCAGGTTTTGGTGGCCTTGTTCAAAATTCGGTCAAATCTT  
 CAAAAGGATGGGACAAAGACAGACAAGTTAGAAAGACTGATGGTCAAGATTGGGGTGTCTCAGTACTGT  
 ACACAGTCTCTGCAACGTGTGTGATTGCCTGTTATTTTTATGAAATCTCCAAGTGGGCACTTTTTCGGTA  
 TTCTGCAGATGATCCAACATGGCTGTTGAAATGTTGAAAATTTTTATGCTTTTGGTGGGCATCACT  
 TCAGGCATGTGGATTTGGTCTGCCAAAACCTTTCACACGTGCCAGAGTGTCCAACAGATTGGTGAATT  
 CTGAAAAGGTAAGAGAGAGAAGAGAGGAAATGGTTGGGTGAAGCCTGAAAAGGCAGTGAGACTGTGGT  
 A

**ACGCGT**ACGCGGCCGCTCGAGCAGAAACTCATCTCAGAAGAGGATCTGGCAGCAAATGATATCCTGGATT  
 ACAAGGATGACGACGATAAGGTTTAA

**Protein Sequence:**

>RC217286 representing NM\_012193  
 Red=Cloning site Green=Tags(s)

MAWRGAGPSVPGAPGGVGLSLGLLLQLLLLLGPARGFGDEEERRCDPIRISMCQNLGYNVTKMPNLVGHE  
 LQTDALQLTTFPLIQYGCSSQLQFFLCSVYVPMCTEKINIPIGPCGMCLSVKRRCEPVLKEFGFAWP  
 ESLNCSKFPPQNDHNHMCMEGPGDEEVPLPHKTIQPGEECHSVGTNSDQYIWKVRLNCLVKCYDAGL  
 YRSRKEFTDIWMAVWASLCFISTAFTVLTFLIDSSRFSPYPERPIIFLSMCYNIYSIAYIVRLTVGRERI  
 SCDFEEAAEPVLIQEGLKNTGCAIIFLLMYFFGMASSIWWVILTLTWFLAAGLKWGHEAIEMHSSYFHIA  
 AWAIPAVKTIVILIMRLVDADEL TGLCYVGNQNLDALTFVAVPLFTYL VIGTLFIAAGLVALFKIRSNL  
 QKDGTKTDKLERLMVKIGVFSVLYTVPATCVIACYFYEISNWALFRYSADDSNMAVEMLIKIFMSLLVGIT  
 SGMWIWSAKTLHTWQKCSNRLVNSGKVKREKRGNGWVKPGKGSSETVV

**TRTRPLEQKLI**SEEDLAANDILDYKDDDDKV

**Chromatograms:**

[https://cdn.origene.com/chromatograms/mk6108\\_f11.zip](https://cdn.origene.com/chromatograms/mk6108_f11.zip)

**Restriction Sites:**

Sgfl-MluI

**Cloning Scheme:**


**ACCN:** NM\_012193

**ORF Size:** 1611 bp

**OTI Disclaimer:** The molecular sequence of this clone aligns with the gene accession number as a point of reference only. However, individual transcript sequences of the same gene can differ through naturally occurring variations (e.g. polymorphisms), each with its own valid existence. This clone is substantially in agreement with the reference, but a complete review of all prevailing variants is recommended prior to use. [More info](#)

**OTI Annotation:** This clone was engineered to express the complete ORF with an expression tag. Expression varies depending on the nature of the gene.

**Components:** The ORF clone is ion-exchange column purified and shipped in a 2D barcoded Matrix tube containing 10ug of transfection-ready, dried plasmid DNA (reconstitute with 100 ul of water).

- Reconstitution Method:**
1. Centrifuge at 5,000xg for 5min.
  2. Carefully open the tube and add 100ul of sterile water to dissolve the DNA.
  3. Close the tube and incubate for 10 minutes at room temperature.
  4. Briefly vortex the tube and then do a quick spin (less than 5000xg) to concentrate the liquid at the bottom.
  5. Store the suspended plasmid at -20°C. The DNA is stable for at least one year from date of shipping when stored at -20°C.

**RefSeq:** [NM\\_012193.4](#)

**RefSeq Size:** 7394 bp

**RefSeq ORF:** 1614 bp

**Locus ID:** 8322

**UniProt ID:** [Q9ULV1](#)

**Cytogenetics:** 11q14.2

**Domains:** FRI, Frizzled

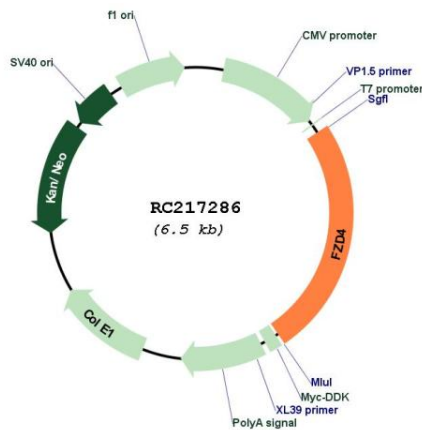
**Protein Families:** Druggable Genome, GPCR, Transmembrane

**Protein Pathways:** Basal cell carcinoma, Colorectal cancer, Melanogenesis, Pathways in cancer, Wnt signaling pathway

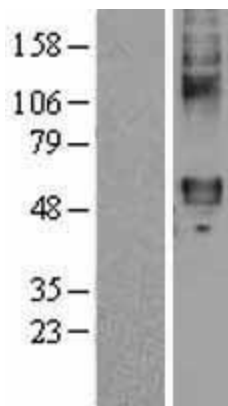
**MW:** 60.3 kDa

**Gene Summary:** This gene is a member of the frizzled gene family. Members of this family encode seven-transmembrane domain proteins that are receptors for the Wingless type MMTV integration site family of signaling proteins. Most frizzled receptors are coupled to the beta-catenin canonical signaling pathway. This protein may play a role as a positive regulator of the Wingless type MMTV integration site signaling pathway. A transcript variant retaining intronic sequence and encoding a shorter isoform has been described, however, its expression is not supported by other experimental evidence. [provided by RefSeq, Jul 2008]

**Product images:**



Circular map for RC217286



Western blot validation of overexpression lysate (Cat# [LY402165]) using anti-DDK antibody (Cat# [TA50011-100]). Left: Cell lysates from untransfected HEK293T cells; Right: Cell lysates from HEK293T cells transfected with RC217286 using transfection reagent MegaTran 2.0 (Cat# [TT210002]).