

Product datasheet for RC217269L4

C Reactive Protein (CRP) (NM_000567) Human Tagged Lenti ORF Clone

Product data:

Product Type:	Expression Plasmids
Product Name:	C Reactive Protein (CRP) (NM_000567) Human Tagged Lenti ORF Clone
Tag:	mGFP
Symbol:	C Reactive Protein
Synonyms:	PTX1
Mammalian Cell Selection:	Puromycin
Vector:	pLenti-C-mGFP-P2A-Puro (PS100093)
E. coli Selection:	Chloramphenicol (34 ug/mL)
ORF Nucleotide Sequence:	The ORF insert of this clone is exactly the same as(RC217269).
Restriction Sites:	SgfI-MluI
Cloning Scheme:	

Cloning sites used for ORF Shuttling:



* The last codon before the Stop codon of the ORF.

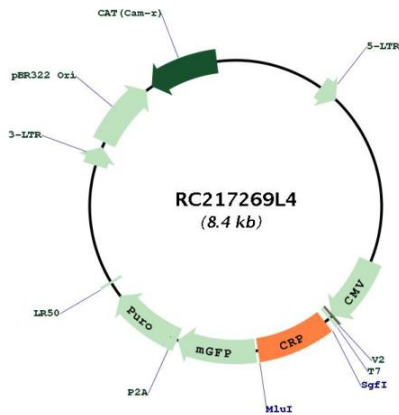
ACCN:	NM_000567
ORF Size:	672 bp



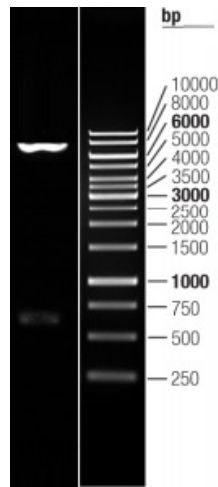
[View online »](#)

OTI Disclaimer:	The molecular sequence of this clone aligns with the gene accession number as a point of reference only. However, individual transcript sequences of the same gene can differ through naturally occurring variations (e.g. polymorphisms), each with its own valid existence. This clone is substantially in agreement with the reference, but a complete review of all prevailing variants is recommended prior to use. More info
OTI Annotation:	This clone was engineered to express the complete ORF with an expression tag. Expression varies depending on the nature of the gene.
Components:	The ORF clone is ion-exchange column purified and shipped in a 2D barcoded Matrix tube containing 10ug of transfection-ready, dried plasmid DNA (reconstitute with 100 ul of water).
Reconstitution Method:	<ol style="list-style-type: none">1. Centrifuge at 5,000xg for 5min.2. Carefully open the tube and add 100ul of sterile water to dissolve the DNA.3. Close the tube and incubate for 10 minutes at room temperature.4. Briefly vortex the tube and then do a quick spin (less than 5000xg) to concentrate the liquid at the bottom.5. Store the suspended plasmid at -20°C. The DNA is stable for at least one year from date of shipping when stored at -20°C.
RefSeq:	NM_000567.2
RefSeq Size:	2024 bp
RefSeq ORF:	675 bp
Locus ID:	1401
UniProt ID:	P02741
Cytogenetics:	1q23.2
Protein Families:	Secreted Protein
MW:	25 kDa
Gene Summary:	The protein encoded by this gene belongs to the pentraxin family which also includes serum amyloid P component protein and pentraxin 3. Pentraxins are involved in complement activation and amplification via communication with complement initiation pattern recognition molecules, but also complement regulation via recruitment of complement regulators. The encoded protein has a calcium dependent ligand binding domain with a distinctive flattened beta-jellyroll structure. It exists in two forms as either a pentamer in circulation or as a nonsoluble monomer in tissues. It is involved in several host defense related functions based on its ability to recognize foreign pathogens and damaged cells of the host and to initiate their elimination by interacting with humoral and cellular effector systems in the blood. Consequently, the level of this protein in plasma increases greatly during acute phase response to tissue injury, infection, or other inflammatory stimuli. Elevated expression of the encoded protein is associated with severe acute respiratory syndrome coronavirus 2 (SARS‐CoV‐2) infection. [provided by RefSeq, Aug 2020]

Product images:



Circular map for RC217269L4



Double digestion of RC217269L4 using SgfI and MluI