

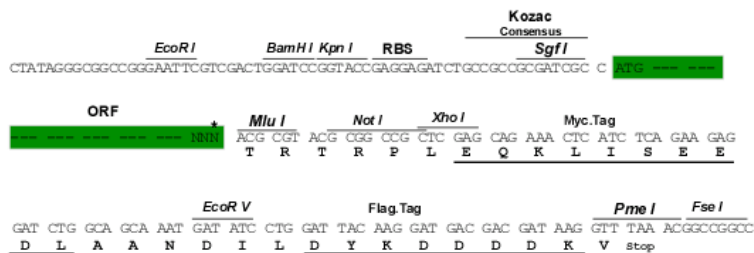
Product datasheet for RC217264

SLC44A4 (NM_025257) Human Tagged ORF Clone

Product data:

Product Type: Expression Plasmids
 Product Name: SLC44A4 (NM_025257) Human Tagged ORF Clone
 Tag: Myc-DDK
 Symbol: SLC44A4
 Synonyms: C6orf29; CTL4; DFNA72; hTPPT1; NG22; TPPT
 Mammalian Cell Selection: Neomycin
 Vector: pCMV6-Entry (PS100001)
 E. coli Selection: Kanamycin (25 ug/mL)
 Restriction Sites: SgfI-MluI
 Cloning Scheme:

Cloning sites used for ORF Shuttling:



* The last codon before the Stop codon of the ORF

ACCN: NM_025257
 ORF Size: 2130 bp



[View online >](#)

OTI Disclaimer: Due to the inherent nature of this plasmid, standard methods to replicate additional amounts of DNA in E. coli are highly likely to result in mutations and/or rearrangements. Therefore, OriGene does not guarantee the capability to replicate this plasmid DNA. Additional amounts of DNA can be purchased from OriGene with batch-specific, full-sequence verification at a reduced cost. Please contact our customer care team at custsupport@origene.com or by calling 301.340.3188 option 3 for pricing and delivery.

The molecular sequence of this clone aligns with the gene accession number as a point of reference only. However, individual transcript sequences of the same gene can differ through naturally occurring variations (e.g. polymorphisms), each with its own valid existence. This clone is substantially in agreement with the reference, but a complete review of all prevailing variants is recommended prior to use. [More info](#)

OTI Annotation: This clone was engineered to express the complete ORF with an expression tag. Expression varies depending on the nature of the gene.

Components: The ORF clone is ion-exchange column purified and shipped in a 2D barcoded Matrix tube containing 10ug of transfection-ready, dried plasmid DNA (reconstitute with 100 ul of water).

Reconstitution Method:

1. Centrifuge at 5,000xg for 5min.
2. Carefully open the tube and add 100ul of sterile water to dissolve the DNA.
3. Close the tube and incubate for 10 minutes at room temperature.
4. Briefly vortex the tube and then do a quick spin (less than 5000xg) to concentrate the liquid at the bottom.
5. Store the suspended plasmid at -20°C. The DNA is stable for at least one year from date of shipping when stored at -20°C.

RefSeq: [NM_025257.3](#)

RefSeq Size: 2643 bp

RefSeq ORF: 2133 bp

Locus ID: 80736

UniProt ID: [Q53GD3](#)

Cytogenetics: 6p21.33

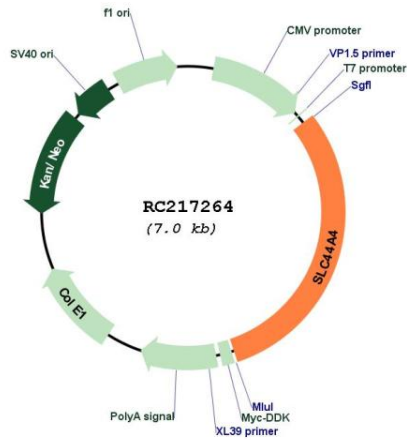
Domains: DUF580

Protein Families: Transmembrane

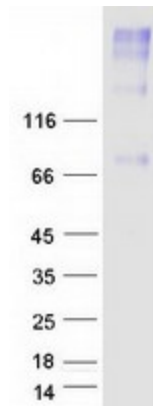
MW: 79.3 kDa

Gene Summary: The protein encoded by this gene may be a sodium-dependent transmembrane transport protein involved in the uptake of choline by cholinergic neurons. Defects in this gene can cause sialidosis, a lysosomal storage disease. Three transcript variants encoding different isoforms have been found for this gene. [provided by RefSeq, May 2010]

Product images:



Circular map for RC217264



Coomassie blue staining of purified SLC44A4 protein (Cat# [TP317264]). The protein was produced from HEK293T cells transfected with SLC44A4 cDNA clone (Cat# RC217264) using MegaTran 2.0 (Cat# [TT210002]).