

Product datasheet for **RC217258**

IL32 (NM_001012718) Human Tagged ORF Clone

Product data:

Product Type: Expression Plasmids
Product Name: IL32 (NM_001012718) Human Tagged ORF Clone
Tag: Myc-DDK
Symbol: IL32
Synonyms: IL-32alpha; IL-32beta; IL-32delta; IL-32gamma; NK4; TAIF; TAIFa; TAIFb; TAIFc; TAIFd
Mammalian Cell Selection: Neomycin
Vector: pCMV6-Entry (PS100001)
E. coli Selection: Kanamycin (25 ug/mL)
ORF Nucleotide Sequence: >RC217258 ORF sequence
Red=Cloning site Blue=ORF Green=Tags(s)

TTTTGTAATACGACTCACTATAGGGCGGCCGGAATTCGTCGACTGGATCCGGTACCGAGGAGATCTGCC
GCC**CGATCGCC**

ATGTGCTTCCCGAAGGTCTCTCTGATGACATGAAGAAGCTGAAGGCCGAATGCACCAGGCCATAGAAA
GATTTTATGATAAAATGCAAAATGCAGAATCAGGACGTGGACAGGTGATGTCGAGCCTGGCAGAGCTGGA
GGACGACTTCAAAGAGGGCTACCTGGAGACAGTGGCGCTTATTATGAGGAGCAGCACCCAGAGCTCACT
CCTCTACTTGAAAAGAAAGAGATGGATTACGGTCCCGAGGCAACAGATCCCCTGTCCCGGATGTTGAGG
ATCCCGCAACCGAGGAGCCTGGGGAGAGCTTTTGTGACAAGGTCATGAGATGGTTCCAGGCCATGCTGCA
GCGGCTGCAGACCTGGTGGCACGGGTTCTGGCCTGGGTGAAGGAGAAGGTGGTGGCCCTGGTCCATGCA
GTGCAGGCCCTCTGAAAACAGTTCAGAGTTTCTGCTGCTCTGTGAGAGCTTTCATGTCTCTTTCC
AGTCTACGGAGCCCCACGGGGGACAAGGAGGAGCTGACACCCAGAAGTGTCTGAACCCCAATCCTC
AAAA

ACGCGTACGCGGCCGCTCGAGCAGAACTCATCTCAGAAGAGGATCTGGCAGCAATGATATCCTGGATT
ACAAGGATGACGACGATAAGGTTTAA

Protein Sequence: >RC217258 protein sequence
Red=Cloning site Green=Tags(s)

MCFPKVLSDDMKLKLKARMHQAIERFYDKMQNAESGRGQVMSSLAELDDFKEGYLETVAAYYEEQHPELT
PLLEKERDGLRCRGNRSPVPDVEDPATEEPGESFCDKVMRWFQAMLQRLQTWWHGVLAWVKEKVVVALVHA
VQALWKQFQSFCCSLSELFMSSFQSYGAPRGDKEELTPQKCEPQSSK

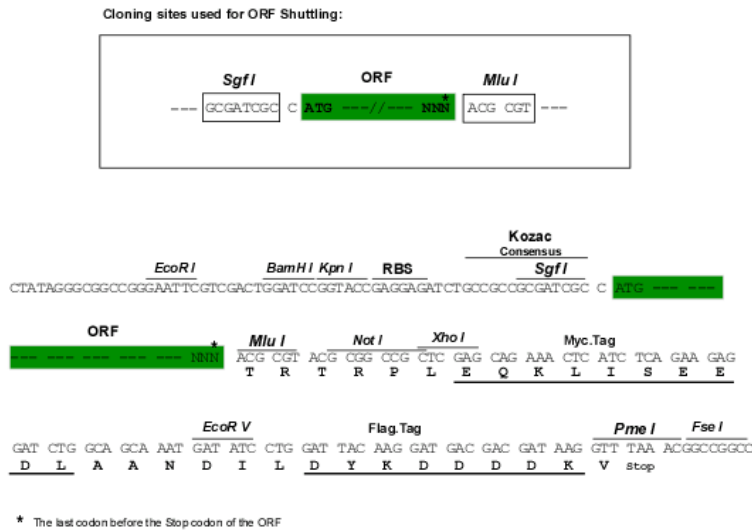
TRTRPLEQKLISEEDLAANDILDYKDDDDKV



Chromatograms: https://cdn.origene.com/chromatograms/mk6433_c11.zip

Restriction Sites: Sgfl-MluI

Cloning Scheme:



ACCN: NM_001012718

ORF Size: 564 bp

OTI Disclaimer: The molecular sequence of this clone aligns with the gene accession number as a point of reference only. However, individual transcript sequences of the same gene can differ through naturally occurring variations (e.g. polymorphisms), each with its own valid existence. This clone is substantially in agreement with the reference, but a complete review of all prevailing variants is recommended prior to use. [More info](#)

OTI Annotation: This clone was engineered to express the complete ORF with an expression tag. Expression varies depending on the nature of the gene.

Components: The ORF clone is ion-exchange column purified and shipped in a 2D barcoded Matrix tube containing 10ug of transfection-ready, dried plasmid DNA (reconstitute with 100 ul of water).

Reconstitution Method:

1. Centrifuge at 5,000xg for 5min.
2. Carefully open the tube and add 100ul of sterile water to dissolve the DNA.
3. Close the tube and incubate for 10 minutes at room temperature.
4. Briefly vortex the tube and then do a quick spin (less than 5000xg) to concentrate the liquid at the bottom.
5. Store the suspended plasmid at -20°C. The DNA is stable for at least one year from date of shipping when stored at -20°C.

RefSeq: [NM_001012718.4](#)

RefSeq Size: 1093 bp

RefSeq ORF: 567 bp

Locus ID: 9235

UniProt ID: [P24001](#)

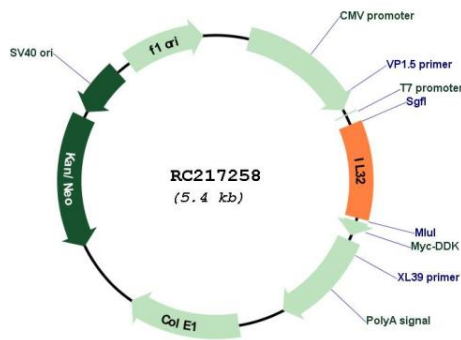
Cytogenetics: 16p13.3

Protein Families: Secreted Protein

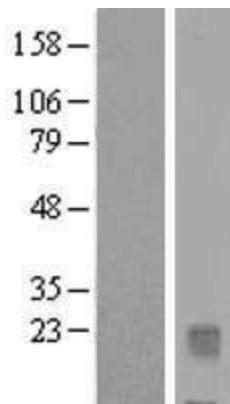
MW: 21.7 kDa

Gene Summary: This gene encodes a member of the cytokine family. The protein contains a tyrosine sulfation site, 3 potential N-myristoylation sites, multiple putative phosphorylation sites, and an RGD cell-attachment sequence. Expression of this protein is increased after the activation of T-cells by mitogens or the activation of NK cells by IL-2. This protein induces the production of TNFalpha from macrophage cells. Alternate transcriptional splice variants, encoding different isoforms, have been characterized. [provided by RefSeq, Jul 2008]

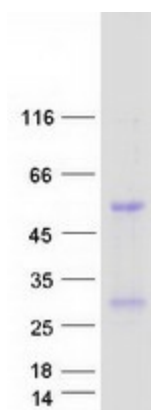
Product images:



Circular map for RC217258



Western blot validation of overexpression lysate (Cat# [LY422819]) using anti-DDK antibody (Cat# [TA50011-100]). Left: Cell lysates from untransfected HEK293T cells; Right: Cell lysates from HEK293T cells transfected with RC217258 using transfection reagent MegaTran 2.0 (Cat# [TT210002]).



Coomassie blue staining of purified IL32 protein (Cat# [TP317258]). The protein was produced from HEK293T cells transfected with IL32 cDNA clone (Cat# RC217258) using MegaTran 2.0 (Cat# [TT210002]).