

Product datasheet for RC217251

HMGA1 (NM_145901) Human Tagged ORF Clone

Product data:

Product Type: Expression Plasmids
Product Name: HMGA1 (NM_145901) Human Tagged ORF Clone
Tag: Myc-DDK
Symbol: HMGA1
Synonyms: HMG-R; HMGA1A; HMG1Y
Mammalian Cell Selection: Neomycin
Vector: pCMV6-Entry (PS100001)
E. coli Selection: Kanamycin (25 ug/mL)
ORF Nucleotide Sequence: >RC217251 representing NM_145901
 Red=Cloning site Blue=ORF Green=Tags(s)

TTTTGTAATACGACTCACTATAGGGCGCCGGGAATTCGTCGACTGGATCCGGTACCGAGGAGATCTGCC
GCC**CGATCGCC**

ATGAGTGAGTCGAGCTCGAAGTCCAGCCAGCCCTTGGCCTCCAAGCAGGAAAAGGACGGCACTGAGAAGC
GGGGCCGGGGCAGGCCGCGCAAGCAGCCTCCGGTGAGTCCCGGGACAGCGCTGGTAGGGAGTCAGAAGGA
GCCAGCGAAGTGCCAACACCTAAGAGACCTCGGGCCGACCAAAGGGAAGCAAAAACAAGGGTCTGCC
AAGACCCGAAAACCACCACAACCTCCAGGAAGGAAACCAAGGGGCAGACCAAAAACTGGAGAAGGAGG
AAGAGGAGGGCATCTCGCAGGAGTCCTCGGAGGAGGAGCAG

ACGCGTACGCGGCCGCTCGAGCAGAACTCATCTCAGAAGAGGATCTGGCAGCAAATGATATCCTGGATT
ACAAGGATGACGACGATAAGGTTTAA

Protein Sequence: >RC217251 representing NM_145901
 Red=Cloning site Green=Tags(s)
 MESSSSKSSQPLASKQEKGTEKRGRGRPRKQPPVSPGTALVGSQKEPSEVPTPKRPRGRPKGSKNKGAA
 KTRKTTTTTPGRKPRGRPKKLEKEEEEGISQESSEEEQ

TRTRPLEQKLISEEDLAANDILDYKDDDDKV

Chromatograms: https://cdn.origene.com/chromatograms/mk6284_b05.zip

Restriction Sites: SgfI-MluI



[View online »](#)

Cloning Scheme:


ACCN: NM_145901

ORF Size: 321 bp

OTI Disclaimer: The molecular sequence of this clone aligns with the gene accession number as a point of reference only. However, individual transcript sequences of the same gene can differ through naturally occurring variations (e.g. polymorphisms), each with its own valid existence. This clone is substantially in agreement with the reference, but a complete review of all prevailing variants is recommended prior to use. [More info](#)

OTI Annotation: This clone was engineered to express the complete ORF with an expression tag. Expression varies depending on the nature of the gene.

Components: The ORF clone is ion-exchange column purified and shipped in a 2D barcoded Matrix tube containing 10ug of transfection-ready, dried plasmid DNA (reconstitute with 100 ul of water).

Reconstitution Method:

1. Centrifuge at 5,000xg for 5min.
2. Carefully open the tube and add 100ul of sterile water to dissolve the DNA.
3. Close the tube and incubate for 10 minutes at room temperature.
4. Briefly vortex the tube and then do a quick spin (less than 5000xg) to concentrate the liquid at the bottom.
5. Store the suspended plasmid at -20°C. The DNA is stable for at least one year from date of shipping when stored at -20°C.

RefSeq: [NM_145901.2](#)

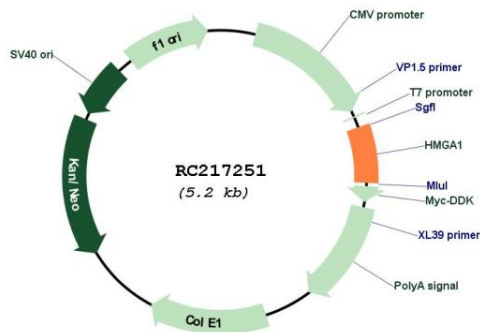
RefSeq Size: 1876 bp

RefSeq ORF: 324 bp

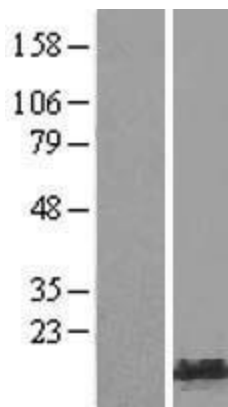
Locus ID: 3159

UniProt ID: [P17096](#)
Cytogenetics: 6p21.31
Protein Families: Druggable Genome, Stem cell - Pluripotency, Stem cell relevant signaling - JAK/STAT signaling pathway, Transcription Factors
MW: 11.5 kDa
Gene Summary: This gene encodes a chromatin-associated protein involved in the regulation of gene transcription, integration of retroviruses into chromosomes, and the metastatic progression of cancer cells. The encoded protein preferentially binds to the minor groove of AT-rich regions in double-stranded DNA. Multiple transcript variants encoding different isoforms have been found for this gene. Pseudogenes of this gene have been identified on multiple chromosomes. [provided by RefSeq, Jan 2016]

Product images:



Circular map for RC217251



Western blot validation of overexpression lysate (Cat# [LY407837]) using anti-DDK antibody (Cat# [TA50011-100]). Left: Cell lysates from untransfected HEK293T cells; Right: Cell lysates from HEK293T cells transfected with RC217251 using transfection reagent MegaTran 2.0 (Cat# [TT210002]).