

Product datasheet for **RC217249**

Cadherin 8 (CDH8) (NM_001796) Human Tagged ORF Clone

Product data:

Product Type:	Expression Plasmids
Product Name:	Cadherin 8 (CDH8) (NM_001796) Human Tagged ORF Clone
Tag:	Myc-DDK
Symbol:	Cadherin 8
Synonyms:	Nbla04261
Mammalian Cell Selection:	Neomycin
Vector:	pCMV6-Entry (PS100001)
E. coli Selection:	Kanamycin (25 ug/mL)



[View online »](#)

ORF Nucleotide Sequence:

>RC217249 representing NM_001796
 Red=Cloning site Blue=ORF Green=Tags(s)

TTTTGTAATACGACTCACTATAGGGCGGCCGGGAATTCGTCGACTGGATCCGGTACCGAGGAGATCTGCC
 GCC**GCGATCGCC**

ATGCCAGAACGGCTACGGAAATGCTCTTGGATCTCTGGACTCCATTAATATATTATGGATTACTCTTC
 CCCCTTGCAATTTACATGGCTCCGATGAATCAGTCTCAAGTTTTAATGAGTGGATCCCTTTGGAACATAA
 CAGTCTGGGTGAAGAACAGCAATTTTGAACCGCTCCAAAAGAGGCTGGGTTTGAATCAATGTTTGTC
 CTGGAAGAGTTTTCTGGACCTGAACCGATTCTTGTGGCCGGCTACACACAGACCTGGATCCTGGGAGCA
 AAAAAATCAAGTATATCCTATCAGGTGATGGAGCTGGGACCATATTTCAAATAAATGATGTAACCTGGAGA
 TATCCATGCTATAAAAAGACTTGACCGGGAGGAAAAGGCTGAGTATACCCTAACAGCTCAAGCAGTGGAC
 TGGGAGACAAGCAAACCTCTGGAGCCTCCTTCTGAATTTATTATTAAGTTCAAGACATCAATGACAATG
 CACCAGAGTTTCTTAATGGACCCTATCATGCTACTGTGCCAGAAATGTCCATTTTGGGTACATCTGTCC
 TAACGTCACTGCGACCGACGCTGATGACCCAGTTTATGAAAACAGTGCAAAGTTGGTTTATAGTATATTG
 GAAGGGCAGCCTTATTTTCCATTGAGCCTGAAACAGCTATTATAAAAACTGCCCTTCCCAACATGGACA
 GAGAAGCCAAGGAGGAGTACCTGGTTGTTATCCAAGCCAAGATATGGGTGGACACTCTGGTGGCCCTGTC
 TGGGACCACGACACTTACAGTGAATGTTAATGACAACTCTCCAAAATTTGCACAGAGCCTG
 TATCACTTCTCAGTACCGAAGATGTGGTTCTTGGCACTGCAATAGGAAGGGTGAAGGCCAATGATCAGG
 ATATTGGTGAAAATGCACAGTATCATATGATATCATCGATGGAGATGGAACAGCACTTTTGGAAATCAC
 TTCTGATGCCAGGCCAGGATGGCATTATAAGGCTAAGAAAACCTCTGGACTTTGAGACCAAAAAATCC
 TATACGCTAAAGGTAGAGGCAGCAATGTCCATATTGACCCACGCTTCAAGTGGCAGGGGGCCCTTAAAG
 ACACGGCAGACGTCAAAAATCGTGGTTGAAGATGCTGATGAGCCTCCGGTCTTCTTCCACCGACTACCT
 ACTTGAAGTTCATGAAAATGCTGCTCTAAACTCCGTGATTGGGCAAGTACTGCTCGTGACCTGATATC
 ACTTCCAGTCTATAAGGTTTTCCATCGACCGGCACACTGACCTGGAGAGGCAGTTCAACATTAATGCAG
 ACGATGGGAAGATAACGCTGGCAACACCCTTGCAGAGAAATTAAGTGTATGGCACAACATAACAATCAT
 TGCTACTGAAATTAGGAACCACAGTCAATATCAGAGTACCTGTTGCTATTAAGTGTGGATGTCAAT
 GACAACGCCCTGAATTCGCATCCGAATATGAGGCATTTTATGTGAAAATGGAAAACCCGGCCAAGTCA
 TTCAAACCTGTTAGCGCCATGGACAAAGATGATCCCAAAAACGGACATTATTTCTTATACAGTCTCCTTCC
 AGAAATGGTCAACAATCCGAATTTACCATCAAGAAAAATGAAGATAATCCCTCAGTATTTTGGCAAAG
 CATAATGGATTCAACCGCCAGAAGCAAGAAGTCTATCTTTACCAATCATAATCAGTATAGTGGAAATC
 CTCCACTGAGCAGCACTAGCACCTTGAACAATCAGGGTCTGTGGCTGCAGCAATGACGGTGTCTGCCAGTC
 TTGCAATGTGCAAGCTTATGTCCTTCCAATTGGACTCAGTATGGGCGCCTTAATTGCCATATTAGCATGC
 ATCATTTTGTGTTAGTCATCGTGGTGTGTTTGTAACTCTACGGCGGCATAAAAAATGAACCATTAATTA
 TCAAAGATGATGAAGACGTTTCGAGAAAACATCATTGCTACGATGATGAAGGAGGAGGGGAGGAGGACAC
 AGAGGCTTTTGCATTGCAACTTACAAAATCCAGATGGAATTAATGGATTTTACCCCGTAAGGATATT
 AAACCAGATTTGCAGTTTATGCCAAGGCAAGGGCTTGTCCAGTTCCAAATGGTGTGATGTCGATGAAT
 TTATAAATGTAAGGCTGCATGAGGCAGATAATGATCCCACGGCCCGCCATATGACTCCATTGAGATATA
 TGGCTATGAAGGCCGAGGGTCAGTGGCTGGCTCCCTCAGCTCCTTGGAGTCCACCACATCAGACTCAGAC
 CAGAATTTTGAACCTCAGTACTGGGTCCCGCTTAAAGAGACTGGGCGAACTCTACTCTGTTGGTG
 AAAGTGACAAAGAACT

ACGCGTACGCGGCCGCTCGAGCAGAACTCATCTCAGAAGAGGATCTGGCAGCAATGATATCCTGGATT
 ACAAGGATGACGACGATAAGGTTTAA

Protein Sequence: >RC217249 representing NM_001796
Red=Cloning site Green=Tags(s)

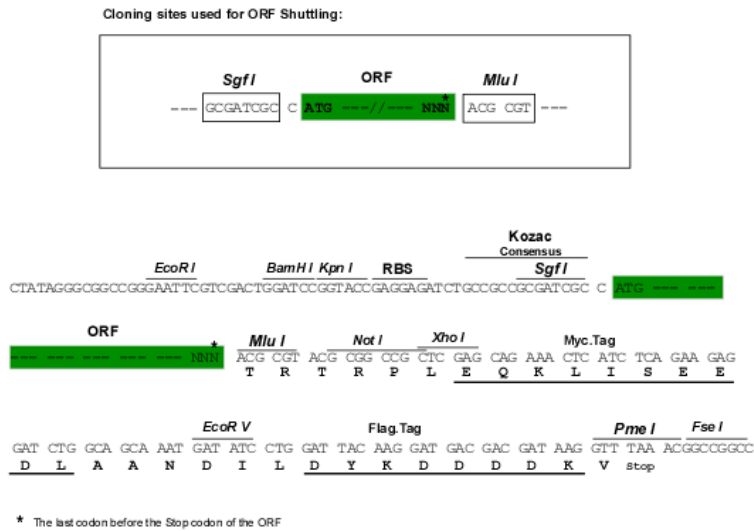
MPERLAEMLLDLWTPLIILWITLPPCIYMAPMNQSQVLMMSGSPLELNSLGEEQRILNRSKRGWVWNQMFV
LEEFSGPEPILVGRHTDLDPGSKKIKYILSGDGAGTIFQINDVTGDIHAIKRLDREEKAEYTLTAQAVD
WETSKLEPPSEFIIKVQDINDNAPEFLNGPYHATVPMSILGTSVTNVTATDADDPVYGNSAKL VYSIL
EGQPYFSIEPETAIKKTALPNMDREAKEEYL VVIQAKDMGGHSGGLSGTTTLTVTLTDVNDNPPKFAQSL
YHFSVPEDVVLGTAIGRVKANDQDIGENAQSSYDIIDGGDTALFEITSDAQAQDGIIRLRKPLDFETKKS
YTLKVEAANVHIDPRFSGRGPFKDTATVKIVVEDAEPVVFSSPTYLLEVHENAALNSVIGQVTARDPDI
TSSPIRFSIDRHTDLERQFNINADDGKITLATPLDRELSVWHNITIIATEIRNHSQISRPVAIKVLDVN
DNAPEFASEYEAFLENGKPGQVIQTVSAMDKDDPKNGHYFLYSLLPEMVNPNFTIKKNEDNSLSILAK
HNGFNRRQKQEVYLLPIIISDSGNPPLSSTSTLTIRVCGCSNDGVVQSCNVEAYVLP IGLSMGALIAILAC
IILLLVIVVLFVTLRRHKNEPLIIKDEDEVRENIIRYDDEGGGEEDTEAFDIATLQNPDGINGFLPRKDI
KPDQLQFMPRQGLAPVPGVDVDEFINVRLHEADNDPTAPPYDSIQIYGYEGRGSVAGSLSSLESTTSDSD
QNFYDLSDWGPRFKRLGELYSVGESDKET

TRTRPLEQKLISEEDLAANDILDYKDDDDKV

Chromatograms: https://cdn.origene.com/chromatograms/mk6165_g12.zip

Restriction Sites: Sgfl-Mlul

Cloning Scheme:



ACCN: NM_001796

ORF Size: 2397 bp

OTI Disclaimer: The molecular sequence of this clone aligns with the gene accession number as a point of reference only. However, individual transcript sequences of the same gene can differ through naturally occurring variations (e.g. polymorphisms), each with its own valid existence. This clone is substantially in agreement with the reference, but a complete review of all prevailing variants is recommended prior to use. [More info](#)

OTI Annotation: This clone was engineered to express the complete ORF with an expression tag. Expression varies depending on the nature of the gene.

Components: The ORF clone is ion-exchange column purified and shipped in a 2D barcoded Matrix tube containing 10ug of transfection-ready, dried plasmid DNA (reconstitute with 100 ul of water).

Reconstitution Method:

1. Centrifuge at 5,000xg for 5min.
2. Carefully open the tube and add 100ul of sterile water to dissolve the DNA.
3. Close the tube and incubate for 10 minutes at room temperature.
4. Briefly vortex the tube and then do a quick spin (less than 5000xg) to concentrate the liquid at the bottom.
5. Store the suspended plasmid at -20°C. The DNA is stable for at least one year from date of shipping when stored at -20°C.

Note: Plasmids are not sterile. For experiments where strict sterility is required, filtration with 0.22um filter is required.

RefSeq: [NM_001796.5](#)

RefSeq Size: 2929 bp

RefSeq ORF: 2400 bp

Locus ID: 1006

UniProt ID: [P55286](#)

Cytogenetics: 16q21

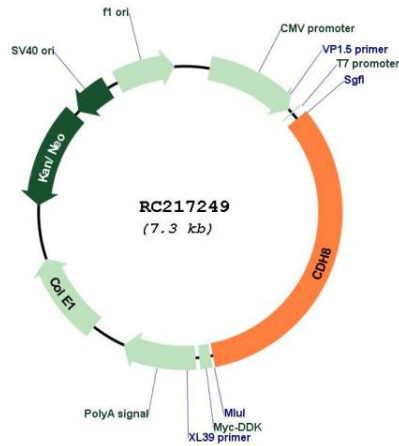
Domains: Cadherin_C_term, CA

Protein Families: Transmembrane

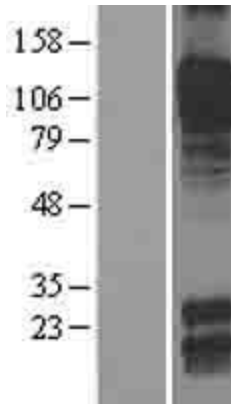
MW: 88.25 kDa

Gene Summary: This gene encodes a type II classical cadherin from the cadherin superfamily, integral membrane proteins that mediate calcium-dependent cell-cell adhesion. Mature cadherin proteins are composed of a large N-terminal extracellular domain, a single membrane-spanning domain, and a small, highly conserved C-terminal cytoplasmic domain. The extracellular domain consists of 5 subdomains, each containing a cadherin motif, and appears to determine the specificity of the protein's homophilic cell adhesion activity. Type II (atypical) cadherins are defined based on their lack of a HAV cell adhesion recognition sequence specific to type I cadherins. This particular cadherin is expressed in brain and is putatively involved in synaptic adhesion, axon outgrowth and guidance. [provided by RefSeq, Jul 2008]

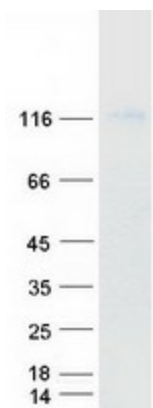
Product images:



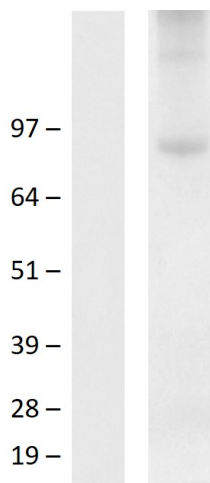
Circular map for RC217249



Western blot validation of overexpression lysate (Cat# [LY400680]) using anti-DDK antibody (Cat# [TA50011-100]). Left: Cell lysates from untransfected HEK293T cells; Right: Cell lysates from HEK293T cells transfected with RC217249 using transfection reagent MegaTran 2.0 (Cat# [TT210002]).



Coomassie blue staining of purified CDH8 protein (Cat# [TP317249]). The protein was produced from HEK293T cells transfected with CDH8 cDNA clone (Cat# RC217249) using MegaTran 2.0 (Cat# [TT210002]).



Western blot validation of overexpression lysate (Cat# [LY400680]) using an anti-DDK antibody (Cat# [TA50011-100]). Left: Cell lysates from untransfected HEK293T cells; Right: Cell lysates from HEK293T cells transfected with RC217249 using transfection reagent PEI