

Product datasheet for RC217247

CMKLR1 (NM_004072) Human Tagged ORF Clone

Product data:

Product Type:	Expression Plasmids
Product Name:	CMKLR1 (NM_004072) Human Tagged ORF Clone
Tag:	Myc-DDK
Symbol:	CMKLR1
Synonyms:	CHEMERINR; ChemR23; DEZ; RVER1
Mammalian Cell Selection:	Neomycin
Vector:	pCMV6-Entry (PS100001)
E. coli Selection:	Kanamycin (25 ug/mL)
ORF Nucleotide Sequence:	>RC217247 representing NM_004072 Red=Cloning site Blue=ORF Green=Tags(s)

TTTTGTAATACGACTCACTATAGGGCGGCCGGAATTCGTCGACTGGATCCGGTACCGAGGAGATCTGCC
GCC**CGATCGCC**

ATGGAGGATGAAGATTACAACACTTCCATCAGTTACGGTGATGAATACCCTGATTATTTAGACTCCATTG
TGGTTTTGGAGGACTTATCCCCCTTGGAAAGCCAGGGTGACCAGGATCTTCTGGTGGTGGTCTACAGCAT
CGTCTGCTTCTCGGGATTCTGGCAATGGTCTGGTGATCATCATTGCCACCTTCAAGATGAAGAAGACA
GTGAACATGGTCTGGTCTCAACCTGGCAGTGGCAGATTTCTGTTCAACGTCTTCTCCCAATCCATA
TCACCTATGCCGCATGGACTACCACTGGGTTTTCGGGACAGCCATGTGCAAGATCAGCAACTTCTTCT
CATCCACAACATGTTACCAGCGTCTTCTGCTGACCATCATCAGCTCTGACCGCTGCATCTCTGTGCTC
CTCCCTGTCTGGTCCCAGAACCCCGCAGCGTTTCGGCTGGCTTACATGGCCTGCATGGTCACTCTGGTCC
TGGCTTTCTTCTGAGTCCCATCTCTCGTCTTCCGGGACACAGCCAACCTGCATGGGAAAATATCCTG
CTTCAACAACCTCAGCCTGTCCACACCTGGGTCTTCTCGTGGCCCACTCACTCCCAATGGACCCTGTG
GGTATAGCCGGCACATGGTGGTGACTGTACCCGCTTCTCTGTGGCTTCTGGTCCCAGTCTCATCA
TCACAGCTTGCTACCTCACCATCGTGTGCAAACTGCAGCGCAACCGCCTGGCCAAGCAAGAAGCCCTT
CAAGATTATTGTGACCATCATCATTACCTTCTTCTCTGCTGGTGCCCTACCACACACTCAACCTCCTA
GAGCTCCACCACACTGCCATGCCTGGCTGTCTTACGCTGGGTTTGGCCCTGGCCATGCCCTTGCCA
TTGCCAACAGCTGCATGAACCCATTCTGTATGTTTTTCATGGGTGAGGACTTCAAGAAGTTCAAGGTGGC
CCTCTTCTCTCGCTGGTCAATGCTCTAAGTGAAGATACAGGCCACTTCTTCTACCCAGCCATAGAAGC
TTTACCAAGATGTCATCAATGAATGAGAGGACTTCTATGAATGAGAGGGAGACCGGCATGCTT

ACGCGTACGCGGCCGCTCGAGCAGAAACTCATCTCAGAAGAGGATCTGGCAGCAATGATATCCTGGATT
ACAAGGATGACGACGATAAGGTTAA



[View online »](#)

Protein Sequence: >RC217247 representing NM_004072
Red=Cloning site Green=Tags(s)

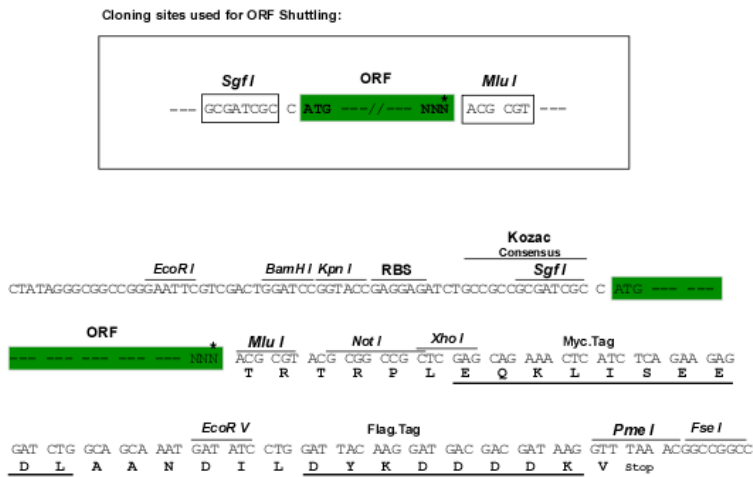
MEDEYNTSISYGDEYPDYLDLSIVVLEDLSPEARVTRIFL VVVYSIVCFLGILGNGLVIIATFKMKKT
 VNMVWFLNLAVADFLFNVFLPIHITYAAMDYHWVFGTAMCKISNFLLIHNMFSTVFLLTIISSDRCSVL
 LPVWSQNHRSVRLAYMACMVIWVLAFFLSSPSLVFRDTANLHGKISCFNNFSLSTPGSSSWPTHSQMDPV
 GYSRHMVVTVTRFLCGFLVPVLIITACYLTIVCKLQRNRLAKTKKPKFKIIVTIIITFFLCWCPYHTLNL
 ELHHTAMPGSVFLGLPLATALAIANSCMNPILYVFMGQDFKFKVLF SRLVNALSED TGHSYSPSHRS
 FTKMSSMNERTSMNERETGML

TRTRPLEQKLISEEDLAANDILDYKDDDDKV

Chromatograms: https://cdn.origene.com/chromatograms/mk6106_b12.zip

Restriction Sites: SgfI-MluI

Cloning Scheme:



* The last codon before the Stop codon of the ORF

ACCN: NM_004072

ORF Size: 1113 bp

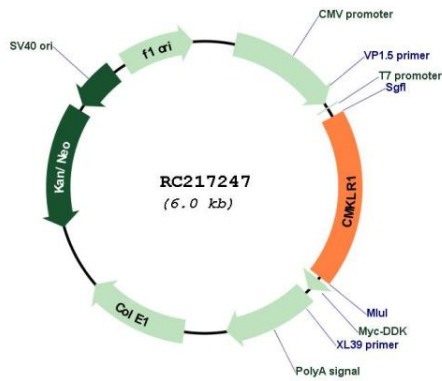
OTI Disclaimer: The molecular sequence of this clone aligns with the gene accession number as a point of reference only. However, individual transcript sequences of the same gene can differ through naturally occurring variations (e.g. polymorphisms), each with its own valid existence. This clone is substantially in agreement with the reference, but a complete review of all prevailing variants is recommended prior to use. [More info](#)

OTI Annotation: This clone was engineered to express the complete ORF with an expression tag. Expression varies depending on the nature of the gene.

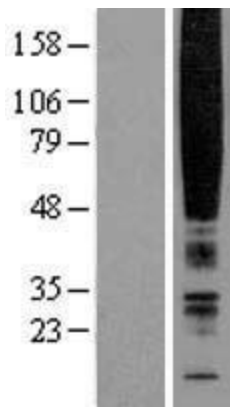
Components: The ORF clone is ion-exchange column purified and shipped in a 2D barcoded Matrix tube containing 10ug of transfection-ready, dried plasmid DNA (reconstitute with 100 ul of water).

Reconstitution Method:	<ol style="list-style-type: none">1. Centrifuge at 5,000xg for 5min.2. Carefully open the tube and add 100ul of sterile water to dissolve the DNA.3. Close the tube and incubate for 10 minutes at room temperature.4. Briefly vortex the tube and then do a quick spin (less than 5000xg) to concentrate the liquid at the bottom.5. Store the suspended plasmid at -20°C. The DNA is stable for at least one year from date of shipping when stored at -20°C.
RefSeq:	<u>NM_004072.3</u>
RefSeq Size:	1900 bp
RefSeq ORF:	1116 bp
Locus ID:	1240
UniProt ID:	<u>Q99788</u>
Cytogenetics:	12q23.3
Domains:	7tm_1
Protein Families:	Druggable Genome, GPCR, Transmembrane
MW:	41.9 kDa
Gene Summary:	Receptor for the chemoattractant adipokine chemerin/RARRES2 and for the omega-3 fatty acid derived molecule resolvin E1. Interaction with RARRES2 induces activation of intracellular signaling molecules, such as SKY, MAPK1/3 (ERK1/2), MAPK14/P38MAPK and PI3K leading to multifunctional effects, like, reduction of immune responses, enhancing of adipogenesis and angiogenesis. Resolvin E1 down-regulates cytokine production in macrophages by reducing the activation of MAPK1/3 (ERK1/2) and NF-kappa-B. Positively regulates adipogenesis and adipocyte metabolism. Acts as a coreceptor for several SIV strains (SIVMAC316, SIVMAC239, SIVMACL7E-FR and SIVSM62A), as well as a primary HIV-1 strain (92UG024-2). [UniProtKB/Swiss-Prot Function]

Product images:



Circular map for RC217247



Western blot validation of overexpression lysate (Cat# [LY418238]) using anti-DDK antibody (Cat# [TA50011-100]). Left: Cell lysates from untransfected HEK293T cells; Right: Cell lysates from HEK293T cells transfected with RC217247 using transfection reagent MegaTran 2.0 (Cat# [TT210002]).