

## Product datasheet for RC217246

### LCN10 (NM\_001001712) Human Tagged ORF Clone

#### Product data:

**Product Type:** Expression Plasmids  
**Product Name:** LCN10 (NM\_001001712) Human Tagged ORF Clone  
**Tag:** Myc-DDK  
**Symbol:** LCN10  
**Mammalian Cell Selection:** Neomycin  
**Vector:** pCMV6-Entry (PS100001)  
**E. coli Selection:** Kanamycin (25 ug/mL)  
**ORF Nucleotide Sequence:** >RC217246 representing NM\_001001712  
Red=Cloning site Blue=ORF Green=Tags(s)

TTTTGTAATACGACTCACTATAGGGCGGCCGGAATTCGTCGACTGGATCCGGTACCGAGGAGATCTGCC  
GCC**CGATCGCC**

ATGAGGCAGGGGCTGCTGGTCTGGCGCTGGTCTGGTCTGGTCTAGTGCTGGCTGCAGGGTCCCAGG  
TGCAGGAGTGGTACCCAGGGAGTCCCACGCCCTCAACTGGAACAAGTTTCAGGGTCTGGTACATTCT  
GGCCACTGCCACTGATGCCAGGGATTCTTGCCGGCCAGGGACAAGGAAGCTGGGGCGTCCGTGGTA  
AAGGTGAACAAAGTGGCCAGCTCCGCGTCTCCTCGCCTTCAGACGGTTGAAGGGTGCCAGTCCCAGG  
AGGTGATCCTGAGGAAAGACGGGAAGAAGCCGGTGTGGGAACGCCCTGTGCATACGCGGGCCCGAG  
GGAAGGACAGGAGGAGTGAAGGGGTGAAGGCCCTCCACGTGCTGCCACTGACTACAGCTACGGCTTG  
GTCTACCTCCGCTGGGGCTGCAACCCAAAACACTACAAGAACCTGCTGCTCTCCATAGGCAGAATGTTT  
CGAGCTCCAGAGTCTGAAGGAATTCATGGACGCTTGTGACATTCTGGGCTCTCCAAGGCCCGCTCAT  
CTCCCGAAAGACGCGTCCCGTACACACACCATCCTGCCA

AG**CGACCG**ACGCGTACGCGGCCGCTCGAGCAGAAACTCATCTCAGAAGAGGATCTGGCAGCAAATGATATCC  
TGGATTACAAGGATGACGACGATAAGGTTTAA

**Protein Sequence:** >RC217246 representing NM\_001001712  
Red=Cloning site Green=Tags(s)

MRQGLLVLALVLLVLAAGSQVQEWYPRESHALNWNKFSGFYILATATDAQGFLPARDKRKLASV  
KVNKVGQLRVLLAFRRLKGCQSQEVILRKDGKPVFGNACAYAAGPREGQEGVKGVKAFHVLSTDYSYGL  
VYLRGRATQNYKNLLLFRQNVSSFQSLKEFMDACDILGLSKAAVILPKDASRTHILP

**SGP**TRRRLEQKLISEEDLAANDILDYKDDDDKV

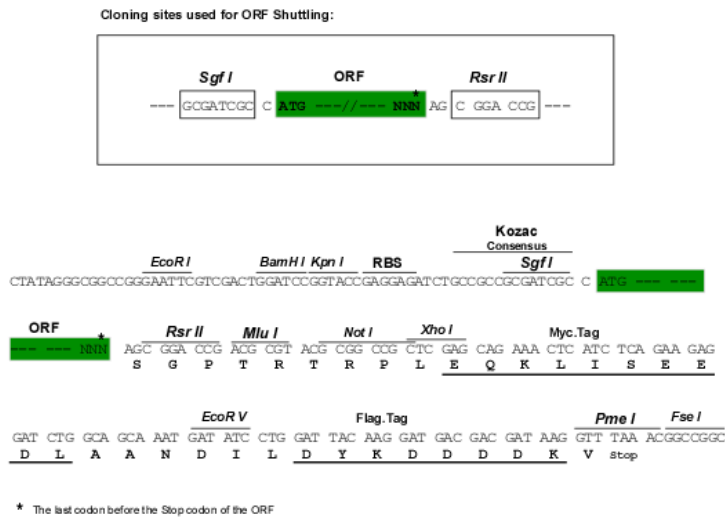
**Chromatograms:** [https://cdn.origene.com/chromatograms/mg2970\\_e06.zip](https://cdn.origene.com/chromatograms/mg2970_e06.zip)



[View online »](#)

**Restriction Sites:** Sgfl-RsrII

**Cloning Scheme:**



**ACCN:** NM\_001001712

**ORF Size:** 600 bp

**OTI Disclaimer:** The molecular sequence of this clone aligns with the gene accession number as a point of reference only. However, individual transcript sequences of the same gene can differ through naturally occurring variations (e.g. polymorphisms), each with its own valid existence. This clone is substantially in agreement with the reference, but a complete review of all prevailing variants is recommended prior to use. [More info](#)

**OTI Annotation:** This clone was engineered to express the complete ORF with an expression tag. Expression varies depending on the nature of the gene.

**Components:** The ORF clone is ion-exchange column purified and shipped in a 2D barcoded Matrix tube containing 10ug of transfection-ready, dried plasmid DNA (reconstitute with 100 ul of water).

- Reconstitution Method:**
1. Centrifuge at 5,000xg for 5min.
  2. Carefully open the tube and add 100ul of sterile water to dissolve the DNA.
  3. Close the tube and incubate for 10 minutes at room temperature.
  4. Briefly vortex the tube and then do a quick spin (less than 5000xg) to concentrate the liquid at the bottom.
  5. Store the suspended plasmid at -20°C. The DNA is stable for at least one year from date of shipping when stored at -20°C.

**RefSeq:** [NM\\_001001712.3](#)

**RefSeq Size:** 2047 bp

**RefSeq ORF:** 603 bp

**Locus ID:** 414332

**UniProt ID:** [Q6JVE6](#)

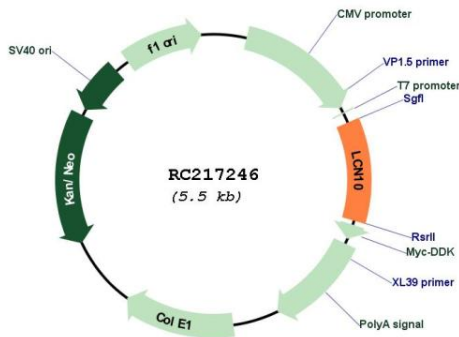
**Cytogenetics:** 9q34.3

**Protein Families:** Secreted Protein, Transmembrane

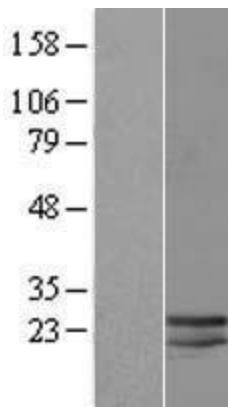
**MW:** 22 kDa

**Gene Summary:** Members of the lipocalin family, such as LCN10, have a common structure consisting of an 8-stranded antiparallel beta-barrel that forms a cup-shaped ligand-binding pocket or calyx. Lipocalins generally bind small hydrophobic ligands and transport them to specific cells (Suzuki et al., 2004 [PubMed 15363845]).[supplied by OMIM, Aug 2009]

**Product images:**



Circular map for RC217246



Western blot validation of overexpression lysate (Cat# [LY424217]) using anti-DDK antibody (Cat# [TA50011-100]). Left: Cell lysates from untransfected HEK293T cells; Right: Cell lysates from HEK293T cells transfected with RC217246 using transfection reagent MegaTran 2.0 (Cat# [TT210002]).