

Product datasheet for **RC217243**

C17orf66 (HEATR9) (NM_152781) Human Tagged ORF Clone

Product data:

Product Type:	Expression Plasmids
Product Name:	C17orf66 (HEATR9) (NM_152781) Human Tagged ORF Clone
Tag:	Myc-DDK
Symbol:	C17orf66
Synonyms:	C17orf66
Mammalian Cell Selection:	Neomycin
Vector:	pCMV6-Entry (PS100001)
E. coli Selection:	Kanamycin (25 ug/mL)



[View online »](#)

ORF Nucleotide Sequence:

>RC217243 ORF sequence
 Red=Cloning site Blue=ORF Green=Tags(s)

TTTTGTAATACGACTCACTATAGGGCGGCCGGAATTCGTCGACTGGATCCGGTACCGAGGAGATCTGCC
 GCCGCGATCGCC

ATGGCCTGTGAAAAATCAACTGATATCTCTGATGTCTCCAGGTCAATGTTCTGTACCCATGGCTGGAAT
 ATCCAGACAAGACCAAAGAACTCAGAAAAGCCATGGCTCCTGTTTCATCTGCCCTGTCTGTACCAGAT
 GCCAAAGGAAGAGTTTCCCAAGTCCAGAGTGTGGAGGCAGCATCCGAGCAAGCCAAACTCAGTCCCG
 TACTGCTACTTCAAGAACTGAGATCTACACGCACTGGCAGCAGCTGTATGATCAGCGAGAGGAAAGGG
 AGGCTGAGAAGATGTTGAGGAAAATGAGAGATGACTGTAGGTACATCAAAGAGGTACATCAAACCCACAT
 CAAAATGTTCCATCTCCCAATGAGCAAGCTGACTATAAAATCTGAGATGCGATCCAGGCCCTTAGAGCT
 ACCCAGGACCCCTGAAGTGGCAAAGATTAAGGGAACACAAAAAGCCTGGAATCTCCAGAGAGGATG
 AGCAGTTCTATGCAGCACAGGCTCTGGGATGCTTACGCATCAGTGACAAGTTTGTATGGAGGCACTACA
 GCAGGTGGCCAAACTGGTCCAGAGAAAGTGAAGTACGAGGCCTACCGAACCTGGCCATCTGGGTTGC
 CTGAATAAGCATGTGATCCGGGCTCTCATAAACAGCTGAAGGAGAAAAATGAGGGTCAAAGGATGGAGA
 CTTTGACGGGGCTACGAATGGCTCTTAACCTCTGGGCTGCTGTCTCTAAAGACAAGAGGACTCAAGTCGG
 GGATGAGGGCAAGCTGGTGCCTGTACTACAGACTGATCAAGAAGTCGTCAGTGAAGCATCTCTGGAG
 GCAGCCCTGTGCCTGGGTTTCTGAGGCCTTGACGAACATGGTCCAAGAGTTCTTGTGTCAGTGCCTGT
 GCCAAGGACTCAAGACCCAGCGGATGAAGGCCTTAGGATGCTGGTCAAGGTGATGCACGTGCACTCAGC
 CCCAGTCATCAAGGCCATCTAGACCAGCTGTGTTCTTCCAGTGTCTTGAGGACCGCTTGAAGCCACC
 CAAATGCTCAAGACCATTGGGCTGGAACAGATCCAGGCACAGGGGCTAGAGGAACTCACATTTAACCTGC
 TCAGGAGGAAGACGCATAATGAACCTTCTTGTGTGAGGCAGGCTGTGGCTCAAATGTGGAAGAGTGC
 CAAGTTGAAGCCTACGATGATGAACTTGGTGGAGGCACAACTGATGAACCCAGATGCCACTGCACGCCAG
 GAAGCAGTCATCTCTTGGGTGTCTGGGGATCCGCAGTCCACAAGTGTTCCACTTGCTCTGGACTTAC
 TAGATGCAGAAAACCACCAGGCTGTGAAGAAGAGTCTACAAGAAACATTAATCCTTTGTGCCTCAATTGA
 TCCCTGGATCCAAAACAAGCTGAAAAACAAGTTCTCTCTGTATATGAGGCACCTAAGACCAATGTGAAG
 GCAGAGCCACAAGGTTCCAGAAAGAGCCTGAGAACCCAGAAGAGTTAACTATTCAAGACTTTGACTTG
 CAAAGTGAACCCCTGTTTATTGCAAAGTCCATACCAAAGTAGGCCAAAAGAAAACGCCTGCTTTCCC
 ACCGTGCTGCTCGAAACCAGAAAACATAGGCCACAGTTCATAGGGCCCTGGCAGCCAAGGATCAAGAAA
 CAGCTCCGGGTCCTTGCTGAAATTGCCAAA

ACGCGTACGCGGCCGCTCGAGCAGAAACTCATCTCAGAAGAGGATCTGGCAGCAAATGATATCCTGGATT
 ACAAGGATGACGACGATAAGGTTTAA

Protein Sequence:

>RC217243 protein sequence
 Red=Cloning site Green=Tags(s)

MACEKSTDISDVSRSMFLYPWLEYDPDKTELKRAMAPVHPLSCYQMPKEEFPPSPECWRQHPSKPNVSV
 YCYFKPEIYTHWHDLYDQREEREAEKMLRKMDDCRYIKEVHQTHIKMFHLPMSKLTIKSEMRSRPLEP
 TQDPLKWQLRELTKSLESPREDEQFYAAQALGCLRISDKFVMEALQQVAQTGPEKVKYEAAYRTLAILGC
 LNKHVIRALIKQLKEKNEGQRMETLTGLRMALNSWAAVSKDKRTQVDEGKLVPLQTLIKKSSSEASLE
 AALCLGFLRPCS NMVQEFLLQCLCQGLKTQRMKALRMLVKVMHVHSAPVIKAILDQLC SSSVLEDRFEAT
 QMLKTIGLEQIQAGLEELTFNLLRRKTHNEPFLAVRQAVAQTVEELKLPMTMNLVEAQLMNPDATARQ
 EAVISLGLGIRSPQVFHLLLDLLDAENHQAVKSLQETLILCASIDPWIQNKLNKVLVSYEAPKTNVK
 AEPTRFQKPEPENPEELTIQDFRLAKLNPLFIAKSITKVGQKTPAFPCCSKPRKHPQVIGPWQPRIKK
 QLRVLAETIAK

TRTRPLEQKLISEEDLAANDILDYKDDDDKV

Chromatograms:

https://cdn.origene.com/chromatograms/mk6607_b01.zip

Restriction Sites:

Sgfl-Mlul

Cloning Scheme:


ACCN: NM_152781

ORF Size: 1710 bp

OTI Disclaimer: The molecular sequence of this clone aligns with the gene accession number as a point of reference only. However, individual transcript sequences of the same gene can differ through naturally occurring variations (e.g. polymorphisms), each with its own valid existence. This clone is substantially in agreement with the reference, but a complete review of all prevailing variants is recommended prior to use. [More info](#)

OTI Annotation: This clone was engineered to express the complete ORF with an expression tag. Expression varies depending on the nature of the gene.

Components: The ORF clone is ion-exchange column purified and shipped in a 2D barcoded Matrix tube containing 10ug of transfection-ready, dried plasmid DNA (reconstitute with 100 ul of water).

Reconstitution Method:

1. Centrifuge at 5,000xg for 5min.
2. Carefully open the tube and add 100ul of sterile water to dissolve the DNA.
3. Close the tube and incubate for 10 minutes at room temperature.
4. Briefly vortex the tube and then do a quick spin (less than 5000xg) to concentrate the liquid at the bottom.
5. Store the suspended plasmid at -20°C. The DNA is stable for at least one year from date of shipping when stored at -20°C.

RefSeq: [NM_152781.4](#)

RefSeq Size: 1969 bp

RefSeq ORF: 1713 bp

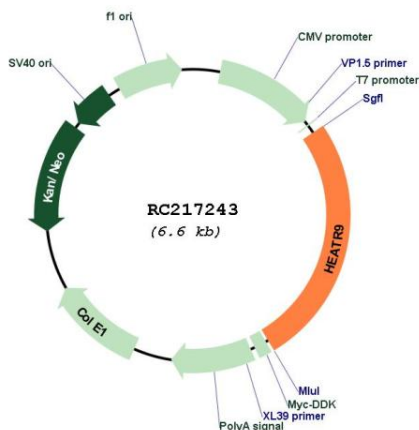
Locus ID: 256957

UniProt ID: [A2RTY3](#)

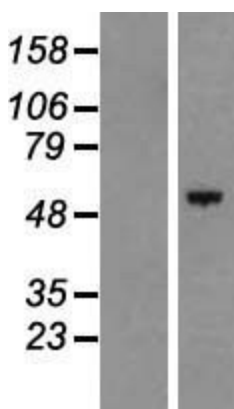
Cytogenetics: 17q12

MW: 65.6 kDa

Product images:



Circular map for RC217243



Western blot validation of overexpression lysate (Cat# [LY407273]) using anti-DDK antibody (Cat# [TA50011-100]). Left: Cell lysates from untransfected HEK293T cells; Right: Cell lysates from HEK293T cells transfected with RC217243 using transfection reagent MegaTran 2.0 (Cat# [TT210002]).