

Product datasheet for RC217237

G CSF (CSF3) (NM_000759) Human Tagged ORF Clone

Product data:

Product Type: Expression Plasmids
Product Name: G CSF (CSF3) (NM_000759) Human Tagged ORF Clone
Tag: Myc-DDK
Symbol: G CSF
Synonyms: C17orf33; CSF3OS; GCSF
Mammalian Cell Selection: Neomycin
Vector: pCMV6-Entry (PS100001)
E. coli Selection: Kanamycin (25 ug/mL)
ORF Nucleotide Sequence: >RC217237 representing NM_000759
 Red=Cloning site Blue=ORF Green=Tags(s)

TTTTGTAATACGACTCACTATAGGGCGGCCGGAATTCGTCGACTGGATCCGGTACCGAGGAGATCTGCC
 GCCCGCATCGCC

ATGGCTGGACCTGCCACCCAGAGCCCCATGAAGCTGATGGCCCTGCAGCTGCTGCTGTGGCACAGTGCAC
 TCTGGACAGTGCAGGAAGCCACCCCTGGGCCCTGCCAGCTCCCTGCCCCAGAGCTTCTGCTCAAGTG
 CTTAGAGCAAGTGAGGAAGATCCAGGGCGATGGCGCAGCGCTCCAGGAGAAGCTGGTGAAGTGTGCC
 ACCTACAAGCTGTGCCACCCGAGGAGCTGGTGTCTCGGACACTCTCTGGGCATCCCTGGGCTCCCC
 TGAGCAGCTGCCCCAGCCAGGCCCTGCAGCTGGCAGGCTGCTTGAGCCAACCTCCATAGCGGCCTTTTCT
 CTACCAGGGCTCCTGCAGGCCCTGGAAGGGATCTCCCCGAGTTGGGTCCCACCTTGGACACACTGCAG
 CTGGACGTCGCCGACTTTGCCACCACCTCTGGCAGCAGATGGAAGAAGTGGGAATGGCCCTGCCCTGC
 AGCCCACCCAGGGTGCCATGCCGGCCTTCGCTCTGCTTTCCAGCGCCGGGAGGAGGGTCTGTTGTC
 CTCCCATCTGCAGAGCTTCTGGAGGTGTCGTACCGCGTTCTACGCCACCTTGCCAGCCC

ACGCGTACGCGGCCGCTCGAGCAGAACTCATCTCAGAAGAGGATCTGGCAGCAATGATATCCTGGATT
 ACAAGGATGACGACGATAAGGTTTAA

Protein Sequence: >RC217237 representing NM_000759
 Red=Cloning site Green=Tags(s)

MAGPATQSPMKLMALQLLWHSALWTVQEATPLGPASSLPQSFLKCLEQVRKIQGDGAALQEKLVSECA
 TYKLCHPEELVLLGHSLGIPWAPLSSCPSQALQLAGCLSQLHSLFLYQGLLQALEGISPELGPDLTLQ
 LDVADFATTIWQMEELGMAPALQPTQGAMPAFASAFQRRAGGVLVASHLQSFLEVSRYRVLRLHAQP

TRTRPLEQKLISEEDLAANDILDYKDDDDKV



[View online »](#)

Chromatograms: https://cdn.origene.com/chromatograms/mg2647_c03.zip

Restriction Sites: SgfI-MluI

Cloning Scheme:



ACCN: NM_000759

ORF Size: 621 bp

OTI Disclaimer: Due to the inherent nature of this plasmid, standard methods to replicate additional amounts of DNA in *E. coli* are highly likely to result in mutations and/or rearrangements. Therefore, OriGene does not guarantee the capability to replicate this plasmid DNA. Additional amounts of DNA can be purchased from OriGene with batch-specific, full-sequence verification at a reduced cost. Please contact our customer care team at custsupport@origene.com or by calling 301.340.3188 option 3 for pricing and delivery.

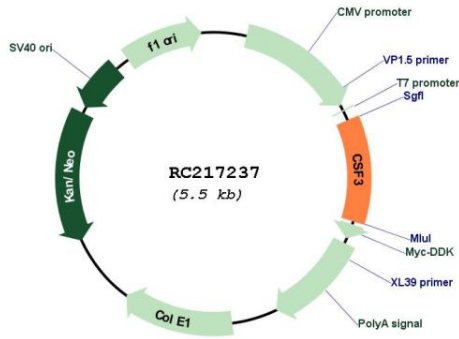
The molecular sequence of this clone aligns with the gene accession number as a point of reference only. However, individual transcript sequences of the same gene can differ through naturally occurring variations (e.g. polymorphisms), each with its own valid existence. This clone is substantially in agreement with the reference, but a complete review of all prevailing variants is recommended prior to use. [More info](#)

OTI Annotation: This clone was engineered to express the complete ORF with an expression tag. Expression varies depending on the nature of the gene.

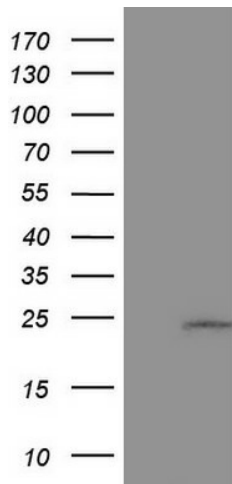
Components: The ORF clone is ion-exchange column purified and shipped in a 2D barcoded Matrix tube containing 10ug of transfection-ready, dried plasmid DNA (reconstitute with 100 ul of water).

| | |
|-------------------------------|---|
| Reconstitution Method: | <ol style="list-style-type: none">1. Centrifuge at 5,000xg for 5min.2. Carefully open the tube and add 100ul of sterile water to dissolve the DNA.3. Close the tube and incubate for 10 minutes at room temperature.4. Briefly vortex the tube and then do a quick spin (less than 5000xg) to concentrate the liquid at the bottom.5. Store the suspended plasmid at -20°C. The DNA is stable for at least one year from date of shipping when stored at -20°C. |
| Note: | Plasmids are not sterile. For experiments where strict sterility is required, filtration with 0.22um filter is required. |
| RefSeq: | NM_000759.4 |
| RefSeq Size: | 1518 bp |
| RefSeq ORF: | 624 bp |
| Locus ID: | 1440 |
| UniProt ID: | P09919 |
| Cytogenetics: | 17q21.1 |
| Protein Families: | Druggable Genome, ES Cell Differentiation/IPS, Secreted Protein |
| Protein Pathways: | Cytokine-cytokine receptor interaction, Hematopoietic cell lineage, Jak-STAT signaling pathway |
| MW: | 22.29 kDa |
| Gene Summary: | This gene encodes a member of the IL-6 superfamily of cytokines. The encoded cytokine controls the production, differentiation, and function of granulocytes. Granulocytes are a type of white blood cell that are part of the innate immune response. A modified form of this protein is commonly administered to manage chemotherapy-induced neutropenia. Alternatively spliced transcript variants have been described for this gene. [provided by RefSeq, May 2020] |

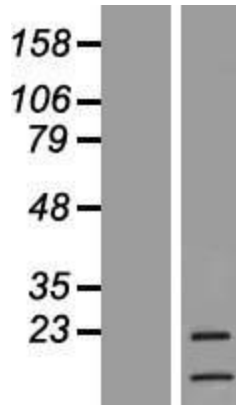
Product images:



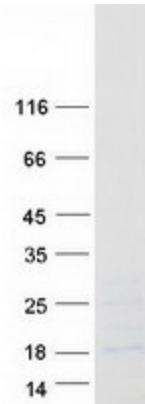
Circular map for RC217237



HEK293T cells were transfected with the pCMV6-ENTRY control (Cat# [PS100001], Left lane) or pCMV6-ENTRY CSF3 (Cat# RC217237, Right lane) cDNA for 48 hrs and lysed. Equivalent amounts of cell lysates (5 ug per lane) were separated by SDS-PAGE and immunoblotted with anti-CSF3 (Cat# [TA805267]). Positive lysates [LY400258] (100ug) and [LC400258] (20ug) can be purchased separately from OriGene.



Western blot validation of overexpression lysate (Cat# [LY400258]) using anti-DDK antibody (Cat# [TA50011-100]). Left: Cell lysates from untransfected HEK293T cells; Right: Cell lysates from HEK293T cells transfected with RC217237 using transfection reagent MegaTran 2.0 (Cat# [TT210002]).



Coomassie blue staining of purified CSF3 protein (Cat# [TP317237]). The protein was produced from HEK293T cells transfected with CSF3 cDNA clone (Cat# RC217237) using MegaTran 2.0 (Cat# [TT210002]).