

Product datasheet for **RC217234**

hCG beta (CGB3) (NM_000737) Human Tagged ORF Clone

Product data:

Product Type: Expression Plasmids
Product Name: hCG beta (CGB3) (NM_000737) Human Tagged ORF Clone
Tag: Myc-DDK
Symbol: hCG beta
Synonyms: CGB; CGB5; CGB7; CGB8; hCGB; LHB
Mammalian Cell Selection: Neomycin
Vector: pCMV6-Entry (PS100001)
E. coli Selection: Kanamycin (25 ug/mL)
ORF Nucleotide Sequence: >RC217234 ORF sequence
Red=Cloning site Blue=ORF Green=Tags(s)

TTTTGTAATACGACTCACTATAGGGCGCCGGGAATTCGTCGACTGGATCCGGTACCGAGGAGATCTGCC
GCC**CGGATCGCC**

ATGGAGATGTTCCAGGGGCTGCTGCTGTTGCTGCTGCTGAGCATGGGCGGGACATGGGCATCCAAGGAGC
CGCTTCGGCCACGGTGCCGCCCATCAATGCCACCCTGGCTGTGGAGAAGGAGGGCTGCCCGTGTGCAT
CACCGTCAACACCACCATCTGTGCCGGCTACTGCCACCACATGACCCGCGTGTGCAGGGGGTCTGCCG
GCCCTGCCTCAGGTGGTGTGCAACTACCGCGATGTGCGCTTCGAGTCCATCCGGTCCCTGGCTGCCCGC
GCGGCGTGAACCCCGTGGTCTCCTACGCGTGGCTCTCAGCTGTCAATGTGCACTCTGCCGCCGACGAC
CACTGACTGCGGGGGTCCAAGGACCACCCTTGACCTGTGATGACCCCGCTTCCAGGACTCCTCTTCC
TCAAAGGCCCTCCCCAGCCTTCCAAGTCCATCCCGACTCCCGGGGCCCTCGGACACCCCGATCTCC
CACAA

ACGCGTACGCGGCCGCTCGAGCAGAACTCATCTCAGAAGAGGATCTGGCAGCAAATGATATCCTGGATT
ACAAGGATGACGACGATAAGGTTTAA

Protein Sequence: >RC217234 protein sequence
Red=Cloning site Green=Tags(s)

MEMFQGLLLLLLLLLSMGGTASKEPLRPRCRPINATLAVEKEGCPVCITVNTTICAGYCPTMTRVLQGVLP
ALPQVVCNYRDVRFESIRLPGCPRGNPVSVAVALSCQCALCRRSTTDCGGPKDHPLTCDPRFQDSSS
SKAPPPSLPSPSRLPGSDTPILPQ

TRTRPLEQKLISEEDLAANDILDYKDDDDKV

Chromatograms: https://cdn.origene.com/chromatograms/mk6069_a03.zip



[View online »](#)

RefSeq: [NM_000737.3](#)

RefSeq Size: 933 bp

RefSeq ORF: 498 bp

Locus ID: 1082

UniProt ID: [P01233](#)

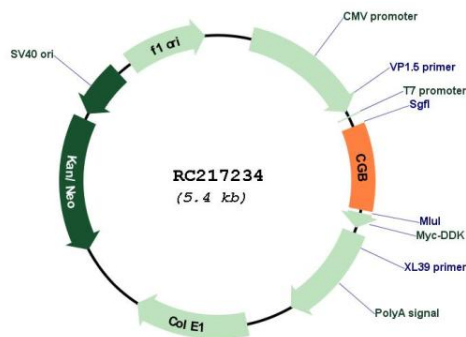
Cytogenetics: 19q13.33

Protein Families: Druggable Genome

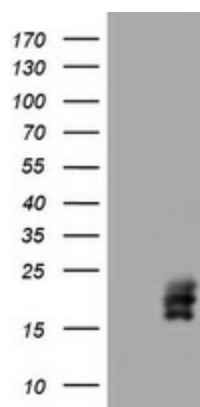
MW: 17.7 kDa

Gene Summary: This gene is a member of the glycoprotein hormone beta chain family and encodes the beta 3 subunit of chorionic gonadotropin (CG). Glycoprotein hormones are heterodimers consisting of a common alpha subunit and an unique beta subunit which confers biological specificity. CG is produced by the trophoblastic cells of the placenta and stimulates the ovaries to synthesize the steroids that are essential for the maintenance of pregnancy. The beta subunit of CG is encoded by 6 genes which are arranged in tandem and inverted pairs on chromosome 19q13.3 and contiguous with the luteinizing hormone beta subunit gene. [provided by RefSeq, Jul 2008]

Product images:



Circular map for RC217234



HEK293T cells were transfected with the pCMV6-ENTRY control (Cat# [PS100001], Left lane) or pCMV6-ENTRY CGB (Cat# RC217234, Right lane) cDNA for 48 hrs and lysed. Equivalent amounts of cell lysates (5 ug per lane) were separated by SDS-PAGE and immunoblotted with anti-CGB(Cat# [TA801893]).