

## Product datasheet for RC217229

### Epithelial Stromal Interaction 1 (EPSTI1) (NM\_033255) Human Tagged ORF Clone

#### Product data:

Product Type:	Expression Plasmids
Product Name:	Epithelial Stromal Interaction 1 (EPSTI1) (NM_033255) Human Tagged ORF Clone
Tag:	Myc-DDK
Symbol:	EPSTI1
Synonyms:	BRESI1
Vector:	pCMV6-Entry (PS100001)
E. coli Selection:	Kanamycin (25 ug/mL)
Cell Selection:	Neomycin
ORF Nucleotide Sequence:	>RC217229 representing NM_033255 Red=Cloning site Blue=ORF Green=Tags(s)

TTTTGTAATACGACTCACTATAGGGCGGCCGGAATTCGTCGACTGGATCCGGTACCGAGGAGATCTGCC  
GCCGCGATCGCC

ATGAACACCCGCAATAGAGTGGTGAACCCGGGCTCGGCGCTCCCCTGCCTCCCGCCGACCCGGGATC  
CCCAGGACCCCTTCTGGGCGGCAAGGGGAGCTGAGCCCCGTGGAAGACCAGAGAGAGGGTTTGGAGGCAGC  
CCCTAAGGGCCCTTCGCGGGAGAGCGTCTGTGCACGCGGGCCAGAGGCGCACAAGTGCATACACCTTGATA  
GCACCAATATAAACCGGAGAAATGAGATACAAAGAATTGCGGAGCAGGAGCTGGCCAACCTGGAGAAGT  
GGAAGGAGCAGAACAGAGCTAAACCGGTTACCTGGTGCCAGACGGCTAGGTGGAAGCCAGTCAGAAAC  
TGAAGTCAGACAGAAACAACAACCTCCAGCTGATGCAATCTAAATACAAGCAAAAGCTAAAAAGAGAAGAA  
TCTGTAAGAATCAAGAAGGAAGCTGAAGAAGCTGAACTCCAAAAAATGAAGGCAATTCAGAGAGAGAAGA  
GCAATAAACTGGAGGAGAAAAAAGACTTCAAGAAAACCTTAGAAGAGAAGCATTAGAGAGCATCAGCA  
ATACAAAACCGCTGAGTCTTGAGCAAACTGAACACAGAATCGCCAGACAGAAGTGCCTGTCAAAGTGCT  
GTTTGTGGCCACAATCCTCAACATGGGCCAGAAGCTGGGCTTACAGAGATTCTCTAAAGGCAGAAGAAA  
ACAGAAAATTGCAAAGATGAAGGATGAACAACATCAAAGAGTGAATTACTGGAATGAAACGGCAGCA  
GCAAGAGCAAGAAAGAGCCAAAATCCACCAGACTGAACACAGGAGGTAATAATGCTTTTCTGGACCGA  
CTCCAAGGCAAAAAGTCAACCAGGTGCCTCGAGCAATCTGGAGGCTGTTGGAATGAATAGCGGTAACA  
GCTGGGTATA

ACGCGTACGCGGCCGCTCGAGCAGAACTCATCTCAGAAGAGGATCTGGCAGCAATGATATCCTGGATT  
ACAAGGATGACGACGATAAGGTTTAA



[View online »](#)

Protein Sequence: >RC217229 representing NM\_033255  
 Red=Cloning site Green=Tags(s)

MNTRNRVNSGLGASPASRPTRDPQDPSSGRQGE LSPVEDQREGLEAAPKGPSRESVVHAGQRRTSAYTLI  
 APNINRRNEIQRIAEQELANLEKWKQNRAPVHLVPRRLGGSQSETEVRQKQQLQLMQSKYKQKLKREE  
 SVRIKKEAEEAELQMKAIQREKSNKLEEKRLQENLRREAFREHQYKTAEFLSKLNTESPDRSACQSA  
 VCGPQSSTWARSWAYRDSLKAEENRKLQMKKDEQHOKSELLELKRQQEQERAKIHQTEHRRVNNNAFLDR  
 LQGKSQPGGLEQSGGCWNMNSGNSWGI

TRTRPLEQKLISEEDLAANDILDYKDDDDKV

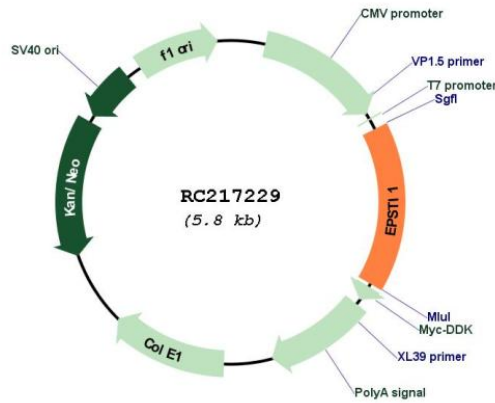
Chromatograms: [https://cdn.origene.com/chromatograms/mk6486\\_d05.zip](https://cdn.origene.com/chromatograms/mk6486_d05.zip)

Restriction Sites: SgfI-MluI

Cloning Scheme:



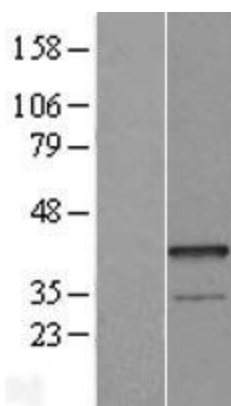
Plasmid Map:



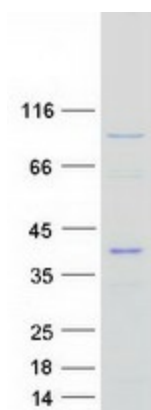
ACCN: NM\_033255

ORF Size:	921 bp
OTI Disclaimer:	The molecular sequence of this clone aligns with the gene accession number as a point of reference only. However, individual transcript sequences of the same gene can differ through naturally occurring variations (e.g. polymorphisms), each with its own valid existence. This clone is substantially in agreement with the reference, but a complete review of all prevailing variants is recommended prior to use. <a href="#">More info</a>
OTI Annotation:	This clone was engineered to express the complete ORF with an expression tag. Expression varies depending on the nature of the gene.
RefSeq:	<a href="#">NM_033255.5</a>
RefSeq Size:	1529 bp
RefSeq ORF:	924 bp
Locus ID:	94240
Protein Families:	Transmembrane
MW:	35.3 kDa
Gene Summary:	The protein encoded by this gene has been shown to promote tumor invasion and metastasis in some invasive cancer cells when overexpressed. Expression of this gene has been shown to be upregulated by direct binding of the Kruppel like factor 8 protein to promoter sequences. The translated protein interacts with the amino terminal region of the valosin containing protein gene product, resulting in the nuclear translocation of the nuclear factor kappa B subunit 1 gene product, and activation of target genes. Overexpression of this gene has been observed in some breast cancers and in some individuals with systemic lupus erythematosus (SLE). [provided by RefSeq, Sep 2016]

### Product images:



Western blot validation of overexpression lysate (Cat# [LY409659]) using anti-DDK antibody (Cat# [TA50011-100]). Left: Cell lysates from untransfected HEK293T cells; Right: Cell lysates from HEK293T cells transfected with RC217229 using transfection reagent MegaTran 2.0 (Cat# [TT210002]).



Coomassie blue staining of purified EPSTI1 protein (Cat# [TP317229]). The protein was produced from HEK293T cells transfected with EPSTI1 cDNA clone (Cat# RC217229) using MegaTran 2.0 (Cat# [TT210002]).