

Product datasheet for **RC217223**

EGFR (NM_201282) Human Tagged ORF Clone

Product data:

Product Type:	Expression Plasmids
Product Name:	EGFR (NM_201282) Human Tagged ORF Clone
Tag:	Myc-DDK
Symbol:	EGFR
Synonyms:	ERBB; ERBB1; ERRP; HER1; mENA; NISBD2; PIG61
Vector:	pCMV6-Entry (PS100001)
E. coli Selection:	Kanamycin (25 ug/mL)
Cell Selection:	Neomycin



[View online »](#)

ORF Nucleotide
Sequence:

>RC217223 representing NM_201282
 Red=Cloning site Blue=ORF Green=Tags(s)

TTTTGTAATACGACTCACTATAGGGCGGCCGGAATTCGTCGACTGGATCCGGTACCGAGGAGATCTGCC
 GCCGCGATCGCC

ATGCGACCCTCCGGGACGGCCGGGGCAGCGCTCCTGGCGTGCTGGCTGCGCTCTGCCCGCGAGTCCGG
 CTCTGGAGGAAAAGAAAGTTTGCCAAGGCACGAGTAACAAGCTCACGAGTTGGGCACTTTGAAGATCA
 TTTTCTCAGCCTCCAGAGGATGTCAATAACTGTGAGGTGGTCTTGGGAATTTGAAATACCTATGTG
 CAGAGGAATTATGATCTTCTCTTAAAGACCATCCAGGAGGTGGTGTATGTCCTCATTGCCCTCA
 ACACAGTGGAGCGAATTCCTTTGAAAACCTGCAGATCATCAGAGGAAATATGTAACGAAAATTCCTA
 TGCCTTAGCAGTCTTACTAATATGATGCAAATAAACCCGACTGAAGGAGCTGCCATGAGAAATTTA
 CAGGAAATCCTGCATGGCGCCGTGCGGTTACGCAACAACCCTGCCCTGTGCAACGTGGAGAGCATCCAGT
 GCGGGACATAGTCAGCAGTGACTTCTCAGCAACATGTCGATGGACTTCCAGAACCACCTGGGCAGCTG
 CCAAAAGTGTGATCCAAGCTGTCCAATGGGAGCTGCTGGGGTGCAGGAGAGGAGAACTGCCAGAACTG
 ACCAAAATCATCTGTGCCAGCAGTGCTCCGGGCGCTGCCGTGGCAAGTCCCCCAGTGACTGCTGCCACA
 ACCAGTGTGCTGCAGGCTGCACAGGCCCCCGGGAGAGCGACTGCCTGGTCTGCCGCAAATCCGAGACGA
 AGCCACGTGCAAGGACACCTGCCCCCACTCATGCTCTACAACCCACCAGTACCAGATGGATGTGAAC
 CCCGAGGGCAAATACAGCTTTGGTGCCACCTGCGTGAAGAAGTGTCCCCGTAATTATGTGGTGACAGATC
 ACGGCTCGTGCGTCCGAGCCTGTGGGGCCGACAGCTATGAGATGGAGGAAGACGGCGTCCGCAAGTGTA
 GAAGTGCAGGGCCCTTCCCGCAAAGTGTGAACGGAATAGGTATTGGTGAATTTAAGACTCACTCTCC
 ATAAATGCTACGAATATTAACACTTCAAAAACCTGCACCTCCATCAGTGGCGATCTCCACATCCTGCCG
 TGGCATTAGGGGTGACTCCTTACACATACTCCTCCTGATCCACAGGAAGTGGATATTCTGAAAAC
 CGTAAAGGAAATCACAGGGTTTTGCTGATTGCTCAGGCTTGGCTGAAAACAGGACGGACCTCCATGCCTTT
 GAGAACCTAGAAATCATACGCGGACAGCAAGCAACATGGTCAAGTCTTCTTGCAGTCTGCAGCTGA
 ACATAACATCCTTGGGATTACGCTCCCTCAAGGAGATAAGTATGGAGATGTGATAATTTAGGAAACAA
 AAATTTGTGCTATGCAAATAAATAAAGTGAAGGAACTGTTGGGACCTCCGGTCCAGAAAACAAAATT
 ATAAGCAACAGAGGTGAAAACAGCTGCAAGGCCACAGGCCAGGTCTGCCATGCCTTGTGCTCCCCGAGG
 GCTGCTGGGGCCCGAGCCAGGACTGCGTCTTGGCCGAATGTCAGCCGAGGACGGGAATGCGTGGA
 CAAGTGAACCTTCTGGAGGTTAGCAAGGGAGTTTGTGGAGAACTCTGAGTGCATACAGTCCACCCA
 GAGTGCCTGCCTCAGGCCATGAACATCACCTGCACAGGACGGGGACCAGACAAGTATCCAGTGTGCC
 ACTACATTGACGGCCCCACTGCGTCAAGACCTGCCCGGACAGGATCATGGGAGAAAACAACACCCTGGT
 CTGGAAGTACGCAGACGCCGGCCATGTGTGCCACCTGTGCCATCCAAACTGCACCTACGGGTCC

ACGCGTACGCGGCCGCTCGAGCAGAAACTCATCTCAGAAGAGGATCTGGCAGCAAATGATATCCTGGATT
 ACAAGGATGACGACGATAAGGTTTAA

Protein Sequence:

>RC217223 representing NM_201282
 Red=Cloning site Green=Tags(s)

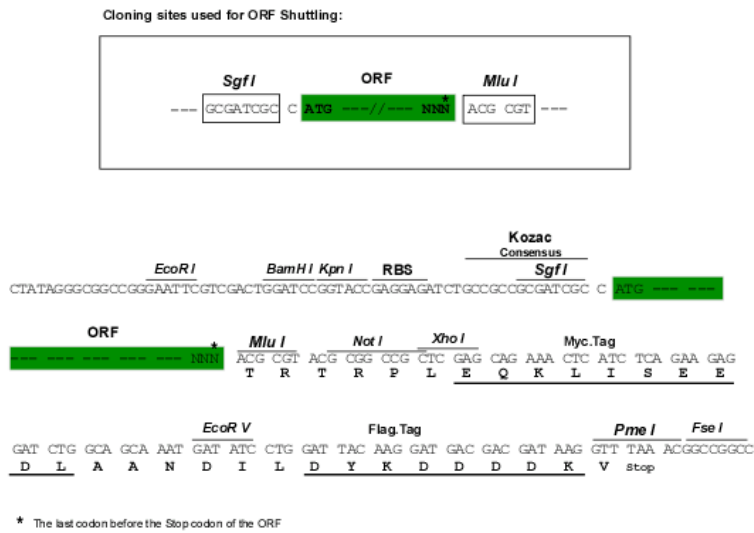
MRPSGTAGAALLALLAALCPASRALAEEKKVCQGTSNKLTQLGTFEDHFLSLQRMFNNEVVLGNLEITYY
 QRNYDLSFLKTIQEVAGYVLIALLNTVERIPLLENLQIIRGNMYENSALAVLSNYDANKTGLKELPMRNL
 QEILHGAVRFSNNPALCNVESIQWRDIVSSDFLSNMSMDFQNLHGSCQKCDPSCPNWSCWGAGEENCQKL
 TKIICAQQCSGRCRGKSPSDCCHNQCAAGCTGPRESCLVCRKFRDEATCKDTCPLMLYNPTTYQMDVN
 PEGKYSFGATCVKKCPRNYVVDHGSCVRACGADSYEMEEDGVRKCKKCEGPCRKVCNGIGIGEFKDSL
 INATNIKHFNKNTSISGDLHILPVAFRGDSFHTPPLDPQELDILKTVKEITGFLLIQAWPENRDLHAF
 ENLEIIRGRKQHGQFSLAVVSLNITSLGLRSLKEISDGDVLIISGNKNLCYANTINWKKLFGTSGQKTKI
 ISNRGENSCKATGQVCHALCSPEGCWGPEPRDCVSCRNVSRGRCVDCNLLLEGEPREFVENSEIQCHP
 ECLPQAMNITCTGRGPDNCIQCAHYIDGPHCVKTCAPAGVMGENNTLVWKYADAGHVCHLCHPNCTYGS

TRTRPLEQKLISEEDLAANDILDYKDDDDKV

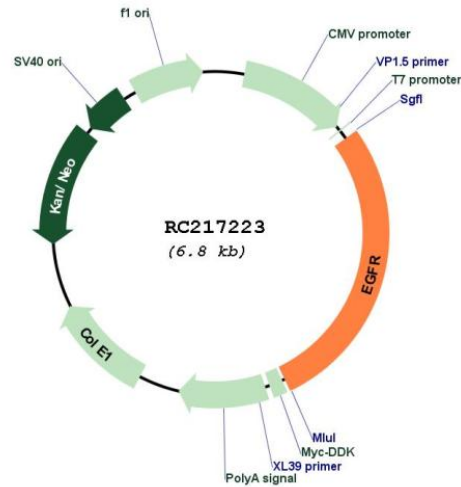
Chromatograms: https://cdn.origene.com/chromatograms/mk8070_e03.zip

Restriction Sites: SgfI-MluI

Cloning Scheme:



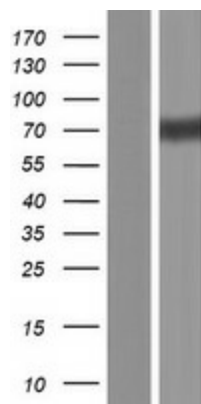
Plasmid Map:



ACCN: NM_201282

ORF Size: 1884 bp

OTI Disclaimer:	The molecular sequence of this clone aligns with the gene accession number as a point of reference only. However, individual transcript sequences of the same gene can differ through naturally occurring variations (e.g. polymorphisms), each with its own valid existence. This clone is substantially in agreement with the reference, but a complete review of all prevailing variants is recommended prior to use. More info
OTI Annotation:	This clone was engineered to express the complete ORF with an expression tag. Expression varies depending on the nature of the gene.
RefSeq:	NM_201282.2
RefSeq Size:	2239 bp
RefSeq ORF:	1887 bp
Locus ID:	1956
UniProt ID:	P00533
Protein Families:	Adult stem cells, Cancer stem cells, Druggable Genome, ES Cell Differentiation/IPS, Protein Kinase, Secreted Protein, Stem cell relevant signaling - JAK/STAT signaling pathway, Transmembrane
Protein Pathways:	Adherens junction, Bladder cancer, Calcium signaling pathway, Colorectal cancer, Cytokine-cytokine receptor interaction, Dorso-ventral axis formation, Endocytosis, Endometrial cancer, Epithelial cell signaling in Helicobacter pylori infection, ErbB signaling pathway, Focal adhesion, Gap junction, Glioma, GnRH signaling pathway, MAPK signaling pathway, Melanoma, Non-small cell lung cancer, Pancreatic cancer, Pathways in cancer, Prostate cancer, Regulation of actin cytoskeleton
MW:	66.9 kDa
Gene Summary:	The protein encoded by this gene is a transmembrane glycoprotein that is a member of the protein kinase superfamily. This protein is a receptor for members of the epidermal growth factor family. EGFR is a cell surface protein that binds to epidermal growth factor, thus inducing receptor dimerization and tyrosine autophosphorylation leading to cell proliferation. Mutations in this gene are associated with lung cancer. EGFR is a component of the cytokine storm which contributes to a severe form of Coronavirus Disease 2019 (COVID-19) resulting from infection with severe acute respiratory syndrome coronavirus-2 (SARS-CoV-2). [provided by RefSeq, Jul 2020]

Product images:

Western blot validation of overexpression lysate (Cat# [LY404514]) using anti-DDK antibody (Cat# [TA50011-100]). Left: Cell lysates from untransfected HEK293T cells; Right: Cell lysates from HEK293T cells transfected with RC217223 using transfection reagent MegaTran 2.0 (Cat# [TT210002]).