

Product datasheet for **RC217220**

KHSRP (NM_003685) Human Tagged ORF Clone

Product data:

Product Type:	Expression Plasmids
Product Name:	KHSRP (NM_003685) Human Tagged ORF Clone
Tag:	Myc-DDK
Symbol:	KHSRP
Synonyms:	FBP2; FUBP2; KSRP; p75
Mammalian Cell Selection:	Neomycin
Vector:	pCMV6-Entry (PS100001)
E. coli Selection:	Kanamycin (25 ug/mL)



[View online »](#)

ORF Nucleotide Sequence:

>RC217220 representing NM_003685
 Red=Cloning site Blue=ORF Green=Tags(s)

TTTTGTAATACGACTCACTATAGGGCGGCCGGGAATTCGTCGACTGGATCCGGTACCGAGGAGATCTGCC
 GCC**CGGATCGCC**

ATGTCGGACTACAGCACGGGAGGACCCCGCCCGGGCCGCGCCCGCCCGCGGGGGCGGGGGAGCCG
 GAGGCGCCGGGGAGGCCCTCCGCCGGGCCCGCCAGGCGCGGGGACCGGGCGGCGGGTCCCGCGG
 CGGCGGCCGGGGCGGGGGTCCGCCGGGGCCCTCTCAGCCACCCGGCGGAGGCGGCCGGGAATCCGC
 AAGGACGCTTTCGCCGACGCGTGCAGCGGGCCCGCCAGATTGCAGCCAAAATTGGAGGCGATGCTGCCA
 CGACAGTGAATAACAGCACTCCTGATTTTGGTTTTGGGGCCAAAAGAGACAGTTGGAAGATGGAGATCA
 ACCGGAGAGCAAGAAGCTGGCTTCCAGGGAGACTCAATCAGTTCTCACTTGGACCCATCCATCTCCC
 CCAAGGACTTCAATGACAGAAGAGTACAGGGTCCAGACGGCATGGTGGGCTGATCATTGGCAGAGGAG
 GTGAACAAATTAACAAAATCCAACAGGATTCAGGCTGCAAAGTACAGATTTCTCCAGACAGCGGTGGCT
 ACCCGAGCGCAGTGTGCTTTCAGAGGACCCAGAAATCTGTCCAGAAAGCCAAGATGATGCTGGATGAC
 ATTGTGTCTCGGGTCTGTGGGGCCCCCAGGACAGTTCCACGACAACGCCAACGGGGGCCAGAACGGCA
 CCGTGCAGGAGATCATGATCCCCCGGGCAAGGCCGGCTGGTCAATTGGCAAGGGCGGGGAGACCATTAA
 GCAGCTGCAGGAACGCGCTGGAGTGAAGATGATCTTAATTGAGGACGGATCTCAGAATACGAATGTGGAC
 AAACCTCTCCGCATCATTGGGGATCCTTACAAAGTGCAGCAAGCCTGTGAGATGGTGTGGACATCCTCC
 GGGAACGTGACCAAGGCGGCTTTGGGGACCGGAATGAGTACGGATCTCGGATTGGCGGAGGCATCGATGT
 GCCAGTGGCCAGGCATTCGTTGGCGTGGTCATTGGCCGGAGTGGAGAGATGATCAAGAAGATCCAGAAT
 GATGCTGGCGTGGGATACAGTTCAAGCAAGATGACGGGACAGGGCCCGAGAAGATTGCTCATATAATGG
 GCGCCCCAGACAGGTGCGAGCACGACGCCGGATCATCAACGACCTCTCCAGAGCCTCAGGAGGTGGTCC
 CCAGGTCTCCAGGGGTCCAGGCATGCCCCCGGGGGCCGAGGCCGAGGAAGAGGCCAAGGCAATTGG
 GGTCCCCCTGGCGGGGAGATGACCTTCTCCATCCCCACTCACAAGTGTGGGCTGGTCACTGGCCGAGGTG
 GCGAGAATGTGAAAGCCATAAACAGCAGACGGGAGCCTTCGTAGAGATCTCCCGCAGCTGCCACCCAA
 CGGGGACCCCACTTCAAGTTGTTTCATCATCCGGGTTTACCCAGCAGATTGACCACGCCAAGCAGCTT
 ATCGAGGAAAAGATCGAGGGTCTCTCTGCCAGTTGGACCAGGCCAGGTGGCCAGGCCCTGCTGGCC
 CAATGGGGCCCTTCAATCTGGGCCCTTCAACCAGGGGCCACCCGGGCTCCCCACATGCCGGGGGCC
 CCTCCTCACCAGTACCCACCCAGGGTGGGGCAATACCTACCCAGTGGCAGCCGCTGCTCCTCAT
 GACCCAAGCAAAGCAGCTGCAGCGGCCGCGGACCCCAACGCCGCTGGGCCGCTACTACTCACACTACT
 ACCAGCAGCCCCGGGCCCGTCCCGGCCCGCACCCGGCCCTGCGGCCACCCGGCTCAGGGTGAAGCC
 CCTCAGCCCCACCCACCGGCCAGTCGGACTACACTAAGGCCTGGGAAGAGTATTACAAAAAGATCGGC
 CAGCAGCCCCAGCAGCCCGGAGCGCCCCACAGCAGGACTACACGAAGGCTTGGGAGGAGTACTACAAGA
 AGCAAGCGCAAGTGGCCACCGGAGGGGTCCAGGAGCTCCCCAGGCTCCAGCCAGACTACAGTCCCGC
 CTGGGCGGAATATTACAGACAGCAGGCCGCTTACTACGGACAGACCCAGGTCTGGCGGCCCCAGCCG
 CCGCCACGCAGCAGGGACAGCAGCAGGCTCAA

ACGCGTACGCGGCCGCTCGAGCAGAACTCATCTCAGAAGAGGATCTGGCAGCAAATGATATCCTGGATT
 ACAAGGATGACGACGATAAGGTTTAA

Protein Sequence: >RC217220 representing NM_003685
 Red=Cloning site Green=Tags(s)

```
MSDYSTGGPPPPPPAGGGGGAGGAGGGPPPPGAGDRGGGGPGGGPGGGSAGGPSQPPGGGGPGIR
KDAFADAVQRRARIAAKIGGDAATTVNNSTPDFGFGGQKRQLEDGDQPE SKKLASQGDSSQLGPIHPP
PRTSMTEEYRVPDGMVGLIIGRGGEQINKIQD SGCKVQISPD SGGLPERSVSLTGAPESVQKAKMMLDD
IVSRGRGGPPGQFHDNANGGQNGTVQEIMIPAGKAGLVIGKGGETIKQLQERAGVKMILIQDGSQNTNVD
KPLRIIGDPYKQQACEMVMDILRERDQGGF GDRNEYGSRI GGGIDVPVPRHSVGVVIGRSGEMIKKIQN
DAGVRIQFKQDDGTGPEKIAHIMGPPDRCEHAARIINDLLQSLRSGPPGPPGMPGGGRGRGQGNW
GPPGGEMTFSIPTHKCGLVIGRGGENVKAINQQTGAFVEISRQLPPNGDPNFKLFIIRGSPQQIDHAKQL
IEEKIEGPLCPVGPGGPGPAGPMGPFNP GPFNQGGPAGPHAGPPPHQYPPQGWNTYPQWQPAPH
DPSKAAAAADPNAAWAAYYSHYYQQPPGPVGPAPAPAAPPAQGEPPQPPTGQSDYTKAWEEYKKIG
QQPQQGAPPQQDYTKAWEEYKKQAQVATGGGPAGPGSQPDYSAAWAEYYRQQAAYYQTPGPGGPQP
PPTQQGQQAQ
```

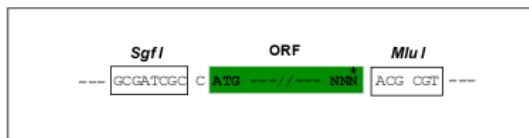
TRTRPLEQKLI SEEDLAANDILDYKDDDDKV

Chromatograms: https://cdn.origene.com/chromatograms/mg3389_b11.zip

Restriction Sites: SgfI-MluI

Cloning Scheme:

Cloning sites used for ORF Shuttling:



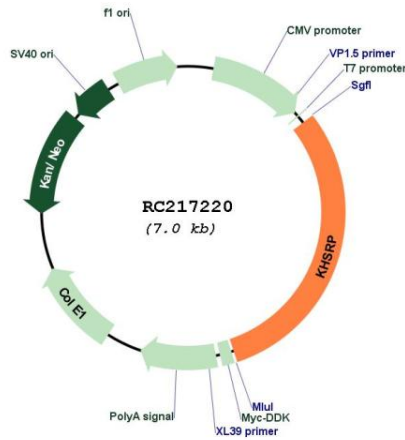
* The last codon before the Stop codon of the ORF

ACCN: NM_003685

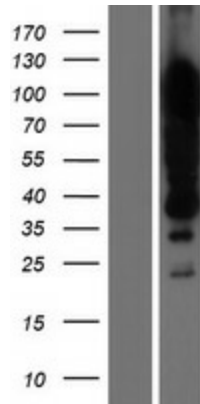
ORF Size: 2133 bp

OTI Disclaimer:	<p>Due to the inherent nature of this plasmid, standard methods to replicate additional amounts of DNA in E. coli are highly likely to result in mutations and/or rearrangements. Therefore, OriGene does not guarantee the capability to replicate this plasmid DNA. Additional amounts of DNA can be purchased from OriGene with batch-specific, full-sequence verification at a reduced cost. Please contact our customer care team at custsupport@origene.com or by calling 301.340.3188 option 3 for pricing and delivery.</p> <p>The molecular sequence of this clone aligns with the gene accession number as a point of reference only. However, individual transcript sequences of the same gene can differ through naturally occurring variations (e.g. polymorphisms), each with its own valid existence. This clone is substantially in agreement with the reference, but a complete review of all prevailing variants is recommended prior to use. More info</p>
OTI Annotation:	This clone was engineered to express the complete ORF with an expression tag. Expression varies depending on the nature of the gene.
Components:	The ORF clone is ion-exchange column purified and shipped in a 2D barcoded Matrix tube containing 10ug of transfection-ready, dried plasmid DNA (reconstitute with 100 ul of water).
Reconstitution Method:	<ol style="list-style-type: none"> 1. Centrifuge at 5,000xg for 5min. 2. Carefully open the tube and add 100ul of sterile water to dissolve the DNA. 3. Close the tube and incubate for 10 minutes at room temperature. 4. Briefly vortex the tube and then do a quick spin (less than 5000xg) to concentrate the liquid at the bottom. 5. Store the suspended plasmid at -20°C. The DNA is stable for at least one year from date of shipping when stored at -20°C.
Note:	Plasmids are not sterile. For experiments where strict sterility is required, filtration with 0.22um filter is required.
RefSeq:	NM_003685.3
RefSeq Size:	3009 bp
RefSeq ORF:	2136 bp
Locus ID:	8570
UniProt ID:	Q92945
Cytogenetics:	19p13.3
Protein Families:	Druggable Genome, Transcription Factors
MW:	72.9 kDa
Gene Summary:	The KHSRP gene encodes a multifunctional RNA-binding protein implicated in a variety of cellular processes, including transcription, alternative pre-mRNA splicing, and mRNA localization (Min et al., 1997 [PubMed 9136930]; Gherzi et al., 2004 [PubMed 15175153]). [supplied by OMIM, Apr 2010]

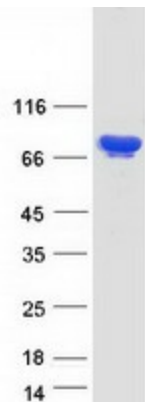
Product images:



Circular map for RC217220



Western blot validation of overexpression lysate (Cat# [LY418503]) using anti-DDK antibody (Cat# [TA50011-100]). Left: Cell lysates from untransfected HEK293T cells; Right: Cell lysates from HEK293T cells transfected with RC217220 using transfection reagent MegaTran 2.0 (Cat# [TT210002]).



Coomassie blue staining of purified KHSRP protein (Cat# [TP317220]). The protein was produced from HEK293T cells transfected with KHSRP cDNA clone (Cat# RC217220) using MegaTran 2.0 (Cat# [TT210002]).