

## Product datasheet for **RC217219**

### **METTL21C (NM\_001010977) Human Tagged ORF Clone**

#### Product data:

**Product Type:** Expression Plasmids  
**Product Name:** METTL21C (NM\_001010977) Human Tagged ORF Clone  
**Tag:** Myc-DDK  
**Symbol:** METTL21C  
**Synonyms:** C13orf39  
**Vector:** pCMV6-Entry (PS100001)  
**E. coli Selection:** Kanamycin (25 ug/mL)  
**Cell Selection:** Neomycin  
**ORF Nucleotide Sequence:** >RC217219 ORF sequence  
**Red=Cloning site Blue=ORF Green=Tags(s)**

TTTTGTAATACGACTCACTATAGGGCGGCCGGAATTCGTCGACTGGATCCGGTACCGAGGAGATCTGCC  
GCC**CGGATCGCC**

ATGGACGTGTGTCTGAGCTCCGCGCAGCAGCCTGGGCGCCGGGGGAAGGACTCAGCTCCCCGGGTGGCT  
GGTTAGAGGCTGAGAAGAAGGGGCTCCGCAGAAAGACAGCACCCGGGGAGTCTAGAGAATCCAACA  
GATAGAACCATCTTTCATAGCCTCCAGAAATTTGTTCTACAGATTACGCCAGCTACACTCAGGAGCAT  
TATCGGTTTGCAGGAAAGGAGATTGTATCCAGGAATCCATAGAGAGTTACGGAGCGGTGGTGTGGCCAG  
GGCTATGGCTTTGTGTCAATACTTGGAGGAACATGCCGAGGAATTGAATTTCCAAGATGCAAAAATACT  
TGAAATGGTGCCGACCAGGCCTTGTTCATTGTGGCCAGTATTTAGGAGCTCAAGTCACAGCAACA  
GATTTGCCTGATGTCTGGGAAACCTTCAATACAATCTTTAAAAACACACTACAATGTACAGCACATC  
TGCCTGAAGTGAAAGAACTGGTATGGGGGAAGACCTGGACAAAACTTTCCAAGTCAGCTTTTACTA  
TGATTACGTCCTAGCCTCAGATGTGGTCTACCATCACTACTTCTGGACAAGCTGCTCACCACCATGGTG  
TACCTTTCCAGCCAGGACGGTGTCTTTGGGCAACAAATTCAGGTTACGACCCGACTATGAATTTT  
TAGATAAATCAAGCAAGTTTTTGACACAACACTGTTGGCTGAATATCCAGAGTCATCAGTCAAACCTTT  
TAAGGGGATACTAAAATGGGAC

**ACGCGT**ACGCGGCCGCTCGAGCAGAAACTCATCTCAGAAGAGGATCTGGCAGCAAATGATATCCTGGATT  
ACAAGGATGACGACGATAAGGTTTAA



[View online »](#)

Protein Sequence: >RC217219 protein sequence  
 Red=Cloning site Green=Tags(s)

MDVCLSSAQQPGRREGLELSSPGGWLEAEKKGAPQKQDSTGGVLEESNKIEPSLHSLQKFVPTDYASYTQEH  
 YRFAGKEIVIQESIYESYGAVVWPGAMALCQYLEEHAELNFQDAKILEIGAGPGLVSIVASILGAQVTAT  
 DLPDVLGNLQYNLLKNTLQCTAHLPEVKELVWGEDLDKNFPKSAFYDYVLDSDVYVHHYFLDKLLTTMV  
 YLSQPGTVLLWANKFRFSTDYEFLDKFKQVFDTTLLAEYPESSVKLFKGIKWD

TRTRPLEQKLISEEDLAANDILDYKDDDDKV

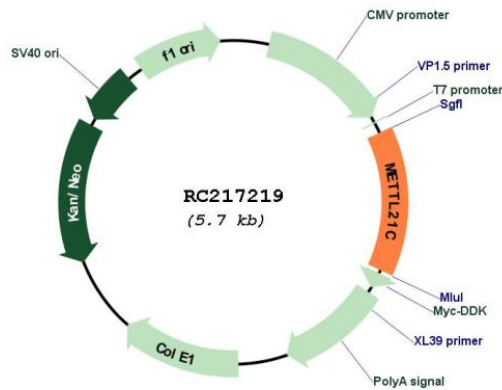
Chromatograms: [https://cdn.origene.com/chromatograms/mk6607\\_f06.zip](https://cdn.origene.com/chromatograms/mk6607_f06.zip)

Restriction Sites: SgfI-MluI

Cloning Scheme:



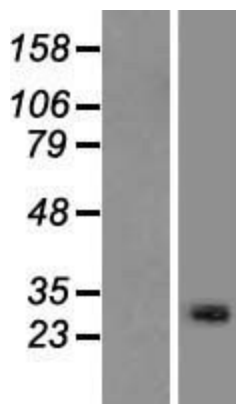
Plasmid Map:



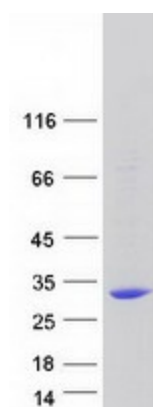
ACCN: NM\_001010977

<b>ORF Size:</b>	792 bp
<b>OTI Disclaimer:</b>	The molecular sequence of this clone aligns with the gene accession number as a point of reference only. However, individual transcript sequences of the same gene can differ through naturally occurring variations (e.g. polymorphisms), each with its own valid existence. This clone is substantially in agreement with the reference, but a complete review of all prevailing variants is recommended prior to use. <a href="#">More info</a>
<b>OTI Annotation:</b>	This clone was engineered to express the complete ORF with an expression tag. Expression varies depending on the nature of the gene.
<b>Components:</b>	The ORF clone is ion-exchange column purified and shipped in a 2D barcoded Matrix tube containing 10ug of transfection-ready, dried plasmid DNA (reconstitute with 100 ul of water).
<b>Reconstitution Method:</b>	<ol style="list-style-type: none"><li>1. Centrifuge at 5,000xg for 5min.</li><li>2. Carefully open the tube and add 100ul of sterile water to dissolve the DNA.</li><li>3. Close the tube and incubate for 10 minutes at room temperature.</li><li>4. Briefly vortex the tube and then do a quick spin (less than 5000xg) to concentrate the liquid at the bottom.</li><li>5. Store the suspended plasmid at -20°C. The DNA is stable for at least one year from date of shipping when stored at -20°C.</li></ol>
<b>RefSeq:</b>	<a href="#">NM_001010977.2</a> , <a href="#">NP_001010977.1</a>
<b>RefSeq Size:</b>	1115 bp
<b>RefSeq ORF:</b>	795 bp
<b>Locus ID:</b>	196541
<b>UniProt ID:</b>	<a href="#">Q5VZV1</a>
<b>Cytogenetics:</b>	13q33.1
<b>Protein Families:</b>	Druggable Genome
<b>MW:</b>	29.6 kDa
<b>Gene Summary:</b>	Protein-lysine methyltransferase.[UniProtKB/Swiss-Prot Function]

## Product images:



Western blot validation of overexpression lysate (Cat# [LY423250]) using anti-DDK antibody (Cat# [TA50011-100]). Left: Cell lysates from untransfected HEK293T cells; Right: Cell lysates from HEK293T cells transfected with RC217219 using transfection reagent MegaTran 2.0 (Cat# [TT210002]).



Coomassie blue staining of purified METTL21C protein (Cat# [TP317219]). The protein was produced from HEK293T cells transfected with METTL21C cDNA clone (Cat# RC217219) using MegaTran 2.0 (Cat# [TT210002]).