

Product datasheet for **RC217218**

RCOR3 (NM_018254) Human Tagged ORF Clone

Product data:

Product Type:	Expression Plasmids
Product Name:	RCOR3 (NM_018254) Human Tagged ORF Clone
Tag:	Myc-DDK
Symbol:	RCOR3
Vector:	pCMV6-Entry (PS100001)
E. coli Selection:	Kanamycin (25 ug/mL)
Cell Selection:	Neomycin



[View online »](#)

ORF Nucleotide
Sequence:

>RC217218 representing NM_018254
Red=Cloning site Blue=ORF Green=Tags(s)

TTTTGTAATACGACTCACTATAGGGCGGCCGGAATTCGTCGACTGGATCCGGTACCGAGGAGATCTGCC
GCCGCGATCGCC

ATGAGAGTCGGAGCCGAATACCAAGCTCGGATCCCTGAATTTGATCCAGGTGCTACAAAGTACACAGATA
AAGACAATGGAGGGATGCTTGTATGGTCTCCATATCACAGTATCCCAGATGCCAAATTGGATGAATACAT
TGCAATTGCAAAGGAAAAGCATGGCTACAATGTGGAACAGGCACTTGGCATGTTGTTCTGGCATAAACAT
AACATTGAGAAGTCCCTTGTGATCTCCCTAATTTCACTCCCTTTCCGGATGAGTGGACAGTGGAAAGATA
AAGTCCTATTTGAACAAGCCTTTAGTTTTCATGGAAAGAGCTTTACAGGATTCAGCAAATGCTTCCAGA
TAAGACAATTGCAAGCCTTGTAAAATATTACTATTCTTGGAAAAAACTCGCTCTAGGACAAGTTTGATG
GATCGCCAGGCTCGTAACTAGCTAATAGACATAATCAGGGTGACAGTGTATGATGTAGAAGAAACAC
ATCCAATGGATGGGAATGATAGTATTGATCCCAAAAAGAAGCCAAAAAGAGGTAATACTGAACA
ACCTGTCCAACTAGCAAGATTGGACTTGAAGAAGAGAGTATCAGAGTTTACAACATCGCCATCATTCT
CAGCGTTCTAAGTGCCGTCACCTAAGGGCATGTATTTAACCCAGGAAGATGTGGTAGCAGTTTCCCTGTA
GTCCCAATGCAGCCAACACCATCCTGAGGCAACTGGACATGGAGTTGATCTCTCTAAAACGTCAGGTTCA
GAATGCTAAGCAAGTAAACAGTGCACTTAAACAGAAAAAGGAAGGTGGAATTGAAGAATTCAAACCTCCT
GAGTCAAATCAGAAAAATTAATGCCCGTTGGACCACAGAGGAGCAGCTTCTAGCAGTGAAGGTGTCGCGCA
AATATGGTAAAGATTTTCAAGCTATTGCAGATGTAATTGGCAACAAGACTGTTGGCCAAGTGAAGAACTT
CTTTGTAAGTACAGGCGTCGGTTTAACTTAGAGGAGGTATTGCAGGAGTGGGAAGCAGAACAAGGAACC
CAGGCTTCTAATGGTGTGCTTCTACTTTAGGGGAGGAGACAAAAAGTCTTCTAATGTCCATCAGGGA
AGAGCACTGATGAAGAAGAGGAGGACAGACCCACAGGCTCCTCGGACTGGTCCATCACCTCCTGTC
CCCATCCTCCACTCCAACACCAACAGCCCTATTGCCACTCTGAACCAGCCTCCACCACTTCTTCGTCCA
ACACTGCCTGCTGCCCGGCTCTTACCAGGAGCCTCCTCCACTCCAGCAGCAGGCTCGGTTTATCCAGC
CCCGGCCAACTTTAAATCAGCCTCCACCACCTTATTGCCCCTGCTAATTCCATGCCACCCCGTCTAAA
CCCAAGACCGGTGTTGTCCACGGTTGGTGGTCAACAGCCACCATCACTTATTGGAATTCAGACAGATTCA
CAGTCCTCACTGCAC

ACGCGTACGCGGCGCTCGAGCAGAACTCATCTCAGAAGAGGATCTGGCAGCAAATGATATCCTGGATT
ACAAGGATGACGACGATAAGGTTTAA

Protein Sequence:

>RC217218 representing NM_018254
Red=Cloning site Green=Tags(s)

MRVGAEQARIPEFDPGATKYTDKDNNGMLVWSPYHSIPDAKLDEYIAIAKEKHGYNVEQALGMLFVHKH
NIEKSLADLPNFTFPDEWTVEDKVLFEQAFSFHGKSFHRIQQMLPDKTIASLVKYYYSWKTRSRSLM
DRQARKLANRHNQGDSDDDVEETHPMDGNDSDYDPKKEAKKEGNTQPVQTSKIGLGRREYQSLQHRHHS
QRSKCRPPKGMYLQEDVAVSCSPNAANTILRQLDMELISLKRQVQNAKQVNSALKQKMEGGIEEFKPP
ESNQKINARWTTTEQLLAVQGVRYGKDFQAIADVIGNKTVGQVKNFFVNYRRRFLNEEVLQEWAEQGT
QASNGDASTLGEETKSASNVPSGKSTDEEEEAQTPQAPRTLGPSPAPSSPTPTAPIATLNQPPPLLRP
TLPAAPALHRQPPPLQQARFIQPRPTLNQPPPLIRPANSMPRLNRPVVLSTVGGQPPSLIGIQTDS
QSSLH

TRTRPLEQKLISEEDLAANDILDYKDDDDKV

Chromatograms:

https://cdn.origene.com/chromatograms/mg2920_b10.zip

Restriction Sites:

Sgfl-Mlul

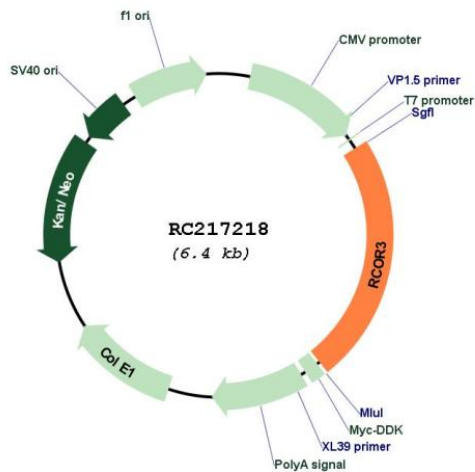
Cloning Scheme:

Cloning sites used for ORF Shutting:



* The last codon before the Stop codon of the ORF

Plasmid Map:



ACCN: NM_018254

ORF Size: 1485 bp

OTI Disclaimer: The molecular sequence of this clone aligns with the gene accession number as a point of reference only. However, individual transcript sequences of the same gene can differ through naturally occurring variations (e.g. polymorphisms), each with its own valid existence. This clone is substantially in agreement with the reference, but a complete review of all prevailing variants is recommended prior to use. [More info](#)

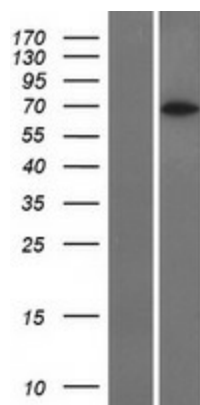
OTI Annotation: This clone was engineered to express the complete ORF with an expression tag. Expression varies depending on the nature of the gene.

RefSeq: [NM_018254.4](#)

RefSeq Size: 4083 bp

RefSeq ORF: 1488 bp

Locus ID:	55758
Domains:	ELM2, myb_DNA-binding
Protein Families:	Transcription Factors
MW:	55.4 kDa
Gene Summary:	May act as a component of a corepressor complex that represses transcription. [UniProtKB/Swiss-Prot Function]

Product images:

Western blot validation of overexpression lysate (Cat# [LY413193]) using anti-DDK antibody (Cat# [TA50011-100]). Left: Cell lysates from untransfected HEK293T cells; Right: Cell lysates from HEK293T cells transfected with RC217218 using transfection reagent MegaTran 2.0 (Cat# [TT210002]).