

## Product datasheet for **RC217211**

### FCRLB (NM\_001002901) Human Tagged ORF Clone

#### Product data:

Product Type:	Expression Plasmids
Product Name:	FCRLB (NM_001002901) Human Tagged ORF Clone
Tag:	Myc-DDK
Symbol:	FCRLB
Synonyms:	FCRL2; FCRLM2; FCRLY; FcRY; FREB-2; FREB2
Mammalian Cell Selection:	Neomycin
Vector:	pCMV6-Entry (PS100001)
E. coli Selection:	Kanamycin (25 ug/mL)



[View online »](#)

**ORF Nucleotide Sequence:**

>RC217211 representing NM\_001002901  
 Red=Cloning site Blue=ORF Green=Tags(s)

TTTTGTAATACGACTCACTATAGGGCGGCCGGGAATTCGTCGACTGGATCCGGTACCGAGGAGATCTGCC  
 GCC**CGCATCGCC**

ATGCGGTTTTGGCCAGTACACCAATGTGCCGTGTATAGCGGTTTGACTCACGGGGATTTCCAAGTCTCCA  
 GCCCATTGACGTCAATGGGAGTTTGTGGACCAAAATCAACGGGACTTACCAAAATGTCGTAATAA  
 CGCCGCTCCGTTGACGCAATGGGCGGTAGGCGTGTACGGTGGGAGGTCTATATAAGCAGAGCTCGTTTA  
 GTGAACCGTCAGAATTTGTAATACGACTCACTATAGGGCGGAGAGAATTCATGTGGCCACTGACAGCCC  
 TTCTGCTCCTGGTTCCAAGCAGTGGGCAAGCTGCTACTCTGGAGAAGCCCATATTGTCTCTACATCCACC  
 TTGGACCACCATCTTCAAAGGGGAGCGGGTAACTTGAAGTGTGATGGATACCACCCACTGCTCCTGGAG  
 CTCCAGCCATCAGCACTCTCTGGTATTGGGCCACTACTTCTGCCCTCTACAAGAAGAGCATTGAGG  
 TGCAGACACCAGGGGTATCGATGCCAGACACGGGGAGCACCCGTCAGTGACCCCATCCACCTCTCTGT  
 ATCCAATGATTGGCTGATTCTGCAAGTGCCTATGCGCCAGTGTTCGAGGGTGAGCCGCTAGTCCTGCGC  
 TGCCGCGGCTGGTACGACAAGGTGGTCTACAAGCTTCACTACTACCACGACGGCCAGGCCGTGCGCTACT  
 TCCACTCCAGCGCAACTACACTGTGTTACAGGCGCGTGCCAGCGACAGCGGGCGCTACCAGTGTCTGGG  
 CACCATGCGCATCCCGGTGGAGAGCGCGCCATGTTCTCCGCTAAGGTGGCTGTGACAGTGAAGAGCTG  
 TTCCGGGCGCCGGTGTGAGGGTGTGGTCCGCGGGAGGCCCGCGGCGCGGCGTGGTGGGGTGGTGC  
 TGCGCTGCGACACGCGCTGCACCCGAGAAAGCGGACACGCGCTGCAGTTCGCGTTTTACAAGTACAG  
 CCGCGCGTGCAGCGCTTCGACTGGGGCGCGAGTACACAGTCCCGGAGCCCGAGGTCGAGGAGCTCGAA  
 TCGTACTGGTGCAGGGCGGTACCGCCACCCGAGTGTCCGAAACGAGTCCGTGGCTGCAGCTCCCGG  
 GGCCGGTTCTCCCTGGACCCGCTCCACACCGCCAGCTCCATGGCCCGCAGCTTGGCTGGCTCCG  
 TAATAGGCGCTTCTCCTCAGAAAGCCCGGTGTCCAGATCGGTCCCGTTGGTACCTCCGTCGCGAAC  
 ACCACCTCCACCGGGCTGCAGTTCGCGGAGCGGCGCCCGACTGCGGGCCACCCGCTGCGCTCCGC  
 CGACGCCCTTGAACAATCGGCTGGAGCCCTGAAACCGAGCTGGACCTTCTGCTCCGAGAAATGCAGCT  
 GCTCAAAGGCTTCTGAGCCGGTGGTCTGGAATTAAGGAGCCACAGGCCCTCCGGGAGCTCAGGGGA  
 ACGCCGAGACCCACCTCTCACTTGTGAGCCGGGAACCCAGAGACCCTCTGTGGAGAGC

**ACGCGT**ACGCGGCCGCTCGAGCAGAAACTCATCTCAGAAGAGGATCTGGCAGCAAATGATATCTGGATT  
 ACAAGGATGACGACGATAAGGTTTAA

**Protein Sequence:**

>RC217211 representing NM\_001002901  
 Red=Cloning site Green=Tags(s)

MRFWPVHQCAVYSGLTHGDFQVSSPIDVNGSLFWHQNRDLPKCRNNAAPLTQMGGRRVRWEVYISRARL  
 VNRQNFVIRLTIGRREFMWPLTALLLVPSGQAATLEKPILSLHPPWTTIFKGERVTLKCDGYHPLLE  
 LQPISTLWYLGHLPLSHKKSIEVQTPGVYRCQTRGAPVSDPIHLSVSNWLIQVPYAPVFEPEPLVLR  
 CRGWYDKVYKLYHYHDQAVRYFHSSANYTVLQARASDSGRYQCSGTMRIPVESAPMFSAKVAVTVQEL  
 FRAPVLRVMGPREGAALGGVLRCDTRLHPQKRDTPQLQAFYKYSRAVRRFDWGAEYTVPEPEVEELE  
 SYWCEAATATRSVRKRSPWLQLPGPSPLDPASTTAPAPWAAALAPGNRPLSFRKPPVSRVPLVTSVRN  
 TTSTGLQFPASGAPTAGPPACAPPTPLEQSAGALKPDVDLLREMQLLKGLLSRVVLELKEPQALRELRG  
 TPETPTSHFAVSPGTPETTPVES

**TRTRPLEQKLI**SEEDLAANDILDYKDDDDKV

**Chromatograms:**

[https://cdn.origene.com/chromatograms/mk6159\\_b01.zip](https://cdn.origene.com/chromatograms/mk6159_b01.zip)

**Restriction Sites:**

Sgfl-Mlul

**Cloning Scheme:**


**ACCN:** NM\_001002901

**ORF Size:** 1539 bp

**OTI Disclaimer:** The molecular sequence of this clone aligns with the gene accession number as a point of reference only. However, individual transcript sequences of the same gene can differ through naturally occurring variations (e.g. polymorphisms), each with its own valid existence. This clone is substantially in agreement with the reference, but a complete review of all prevailing variants is recommended prior to use. [More info](#)

**OTI Annotation:** This clone was engineered to express the complete ORF with an expression tag. Expression varies depending on the nature of the gene.

**Components:** The ORF clone is ion-exchange column purified and shipped in a 2D barcoded Matrix tube containing 10ug of transfection-ready, dried plasmid DNA (reconstitute with 100 ul of water).

**Reconstitution Method:**

1. Centrifuge at 5,000xg for 5min.
2. Carefully open the tube and add 100ul of sterile water to dissolve the DNA.
3. Close the tube and incubate for 10 minutes at room temperature.
4. Briefly vortex the tube and then do a quick spin (less than 5000xg) to concentrate the liquid at the bottom.
5. Store the suspended plasmid at -20°C. The DNA is stable for at least one year from date of shipping when stored at -20°C.

**RefSeq Size:** 1794 bp

**RefSeq ORF:** 1281 bp

**Locus ID:** 127943

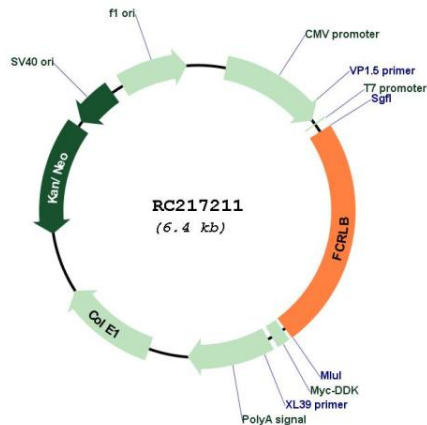
**UniProt ID:** [Q6BAA4](#)

**Cytogenetics:** 1q23.3

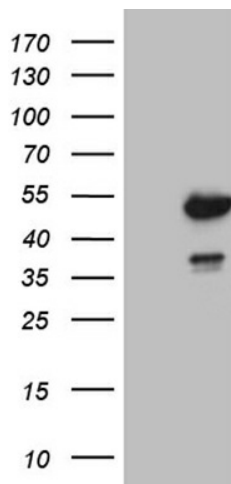
**MW:** 57.14 kDa

**Gene Summary:**

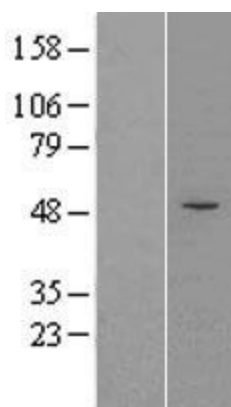
FCRL2 belongs to the Fc receptor family. Fc receptors are involved in phagocytosis, antibody-dependent cell cytotoxicity, immediate hypersensitivity, and transcytosis of immunoglobulins via their ability to bind immunoglobulin (Ig) constant regions (Chikaev et al., 2005 [PubMed 15676285]).[supplied by OMIM, Mar 2008]

**Product images:**


Circular map for RC217211



HEK293T cells were transfected with the pCMV6-ENTRY control (Cat# [PS100001], Left lane) or pCMV6-ENTRY FCRLB (Cat# RC217211, Right lane) cDNA for 48 hrs and lysed. Equivalent amounts of cell lysates (5 ug per lane) were separated by SDS-PAGE and immunoblotted with anti-FCRLB (Cat# [TA809250])(1:2000). Positive lysates [LY400392] (100ug) and [LC400392] (20ug) can be purchased separately from OriGene.



Western blot validation of overexpression lysate (Cat# [LY400392]) using anti-DDK antibody (Cat# [TA50011-100]). Left: Cell lysates from untransfected HEK293T cells; Right: Cell lysates from HEK293T cells transfected with RC217211 using transfection reagent MegaTran 2.0 (Cat# [TT210002]).