

Product datasheet for RC217203

RhoGAP (ARHGAP5) (NM_001030055) Human Tagged ORF Clone

Product data:

Product Type:	Expression Plasmids
Product Name:	RhoGAP (ARHGAP5) (NM_001030055) Human Tagged ORF Clone
Tag:	Myc-DDK
Symbol:	RhoGAP
Synonyms:	GFI2; p190-B; p190BRhoGAP; RhoGAP5
Mammalian Cell Selection:	Neomycin
Vector:	pCMV6-Entry (PS100001)
E. coli Selection:	Kanamycin (25 ug/mL)
ORF Nucleotide Sequence:	>RC217203 representing NM_001030055 Red=Cloning site Blue=ORF Green=Tags(s)

TTTTGTAATACGACTCACTATAGGGCGGCCGGAATTCGTCGACTGGATCCGGTACCGAGGAGATCTGCC
GCC**CGATCGCC**

ATGATGGCAAAAAACAAAGAGCCTCGTCCCCATCCTATACCATCAGTATAGTTGGACTCTCTGGGACTG
AAAAAGACAAAGGTAACGTGGAGTTGGAAAGTCTTGTGGTGAATAGATTTGTACGCTCAAAGCAGA
TGAATATTATCCAGAGCATACTTCTGTGCTTAGCACCATTGACTTTGGAGGACGAGTAGTAAACAATGAT
CACTTTTTGTACTGGGGTACATAATACAAAATAGTGAAGATGGAGTAGAATGCAAAATTCATGTCATTG
AACAAACAGAGTTCATTGATGACCAGACTTTCTTGCCTCATCGGAGTACGAATTTGCAACCATATATAAA
ACGTGCAGCTGCATCTAATTGCAGTCAGCAGAAAACTAATGTACATTTGCACTGATCAGCTAGGCTTA
GAACAAGACTTTGAACAGAAAGCAAAATGCCTGAAGGGAAGCTCAACGTAGATGGATTTTTATTATGCATTG
ATGTAAGTCAAGGATGCAATAGGAAGTTTGTGATCAACTTAAATTTGTGAATAACCTTTTTGTCCAGTT
ATCAAAATCAAAAAACCTGTAATAATAGCAGCAACTAAATGTGATGAATGCGTGGATCATTATCTTAGA
GAAGTTCAGGCATTTGCTTCAAATAAAAAGAACCTTCTTGTAGTGAAACATCAGCAGATTTAATGTCA
ACATTGAAACATGTTTTACTGCACTGGTACAAATGTTGGATAAACTCGTAGCAAGCCTAAAAATTATCC
CTATTTGGATGCTTATAAAACACAGAGACAACCTGTTGTACAGCAACAGATAAGTTTAAAAAATCTGATTG
CAGACTGTGAGAGATTATCATGCAACTTGGAAAACCTGTTAGTAAATTAATAAATCACTCTGATTATG
AAGAATACATCAACTTAGAGGGAACAAGAAAGGCCAGAAATACATTCTCAAACATATAGAACAACCTAA
ACAGGAACATATAAGAAAAAGGAGAGAAGATATATAAATACTTTACCAAGAGCTTTTAACACTCTTTTG
CCAAATCTAGAAGAGATTGAACATTTGAATTGGTCAAGCTTTGAAGTTAATGGAAAAGAGAGCAGATT
TCCAGTTATGTTTTGTGGTGCTAGAAAAAATCCTTGGGATGAACTGACCATATAGACAAAATTAATGA
TAGGCGGATTCCATTTGACCTCTGAGCACTTTAGAAGCTGAAAAAGTCTATCAGAACCATGTACAGCAT
CTGATATCCGAGAAGAGGAGGGTGGAAATGAAGGAAAAATTCAAAAGACTTTGGAAAAAATTCAAATCA
TTTACCAGGGCAGCCATGGGAGGAAGTTATGTGCTTTGTTATGGAGGATGAAGCCTACAAATATATCAC
TGAGGCTGATAGCAAAGGATATATGGTAGGCATCAGCGAGAAATAGTTGAAAAAGCCAAAGAAGAGTTT



[View online >](#)

CAAGAAATGCTTTTTGAGCATTCTGAACCTTTTTATGATTTAGATCTTAATGCAACACCTAGTTCAGATA
AAATGAGTGAAATTCATACAGTTCTGAGTGAAGAACCTAGATATAAAGCTTTACAGAACTTGCACCTGA
TAGGGAATCCCTTCTACTTAAGCATATAGGATTTGTTTATCATCCCACTAAAGAAACATGTCTTAGTGCC
CAAAATGTACAGACATTAAGTGGAGCAGTACTTGCTAGTAGTCTTTTACAGTTGGATCATGGCCGCT
TAAGATTATATCACGATAGTACCAATATAGATAAAGTTAACCTTTTTATTTAGGGAAGGATGGCCTTG
CCAAGAAGTACCAATGAGATAAAGACACAATCCACTGATGATGAGTATGCCTTAGATGGAAAAATTTAT
GAACCTGATCTTCGGCCGTTGATGCCAAATCGCCTTACTTTTTGAGTCAGTTATGGACTGCCGCTTTA
AACCCATGCGGTCTTCTGTGATTTAATTCCATTGAGTCATTGAGTTTTATTGGGAATTTATTGGGAA
AATAAGAAGTGAAGCTTCTCAGATCAGAAAAGATAAATACATGGCTAATCTTCCATTTACATTAATTCTG
GCTAATCAGAGAGATTCCATTAGTAAGAATCTACCAATCTCAGGCACCAAGGGCAGCAGTTGGCAAACA
AGTTGCAATGCCTTTTGTAGATGTACCTGCTGGTACATATCCTCGTAAATTTAATGAAACCCAAATAAA
GCAAGCTCTCAGAGGAGTATTGGAATCAGTTAAACACAATTTGGATGTGGTGAGCCCAATTCCTGCCAAT
AAGGACTTATCAGAAGCTGACTTGAGAATTGCATGTGCGCCATGTGTGGAGATCCATTTAGTGTGGATC
TTATTCTTCCACCCTTCTTGTCTCATTCTTGCAGTGTGCTCAAGCTGGACAGAATAATTCCTAAT
GCTTGATAAAAATCATTGGTGAAAAAGGAGGCGAATACAGATCACAATATTATCATACCCTCTTCAATT
GGAGTAAGAAAAGATGAACTAGTTCATGGGTATATATTAGTTTACTCTGCAAAACGGAAAGCTTCGATGG
GAATGCTTCGAGCATTCTATCAGAAGTCAAGACACCATTCTGTACAGCTGGTGGCAGTTACTGACAG
CCAAGCAGATTTTTTGAAGTGAAGCTATCAAAGAGTTAATGACTGAAGGAGAACACATTGCAACTGAG
ATCACTGCTAAATTTACAGCACTGTATTCTTTATCTCAGTATCATCGGCAAACTGAGGTCTTTACTCTGT
TTTTTAGTGATGTTCTAGAGAAAAAATATGATAGAAAATCTTATTTGTCTGATAATACAAGGGAATC
AACCCATCAAAGTGAAGATGTTTTCTACCATCTCCAGAGACTGTTTTCCCTATAATACTACCCTGAT
TCAGATGATGACACAGAAGCACCACCTCTTATAGTCCAATTGGGATGATGTACAGTTGCTTCCAACAC
CTAGTGACCGTTCCAGATATAGATTAGATTTGGAAGGAAATGAGTATCCTATTCATAGTACCCCAACTG
TCATGACCATGAACGCAACCATAAAGTGCTCCACCTATTAACCTAAACCAGTTGTACCTAAGACAAAT
GTGAAAAAAGTCCGATCCAAACCTTTTTAAAAACAATTGAAGCTGGTATTGGTAAAAATCCAAGAAAGCAGA
CTTCCCGGTGCCTTTGGCACATCCTGAAGATATGGATCCTTCAGATAACTATGCGGAACCCATTGATAC
AATTTTCAAACAGAAGGGCTATTCTGATGAGATTTATGTTGTCCAGATGATAGTCAAAATCGTATTA
ATTCGAAACTCATTTGTAATAACACCCAAAGGAGATGAAGAAAATGGGTTTTCTGATAGAACCCTCAAAA
GTCATGGGAACGGAGGCCTTCAAATACAAATATAAATCTAAAACCTTGTTTAGTAAAGCCAAGTCATA
CTATAGAAGAACACATTCAGATGCCAGTATGATGAGGCTTCCACTTCTAAAACAAAAAGAAAGGA
AGACATCGTGAAGTGAAGAAGATCCACTTCTTCTCCTGTTGAAACTTGAAAGGTGGTATTGATAATC
CTGCAATCACTTCTGACCAGGAGTTAGATGATAAGAAGATGAAGAAGAAAACCCACAAAGTGAAAGAAGA
TAAAAAGCAGAAAAAGAAAAGTAAAGAACTTCAATCCACCAACACGTAGAAATTGGGAAAGTAAATCTTT
GGGATGCCCTCCAGGATCTGGTTACAGCTGAGAAGCCCATACCACTATTTGTTGAGAAATGTGTGGAAAT
TTATTGAAGATACAGGGTTATGTACCGAAGGACTCTACCGTGTACGCGGGAATAAACTGACCAAGACAA
TATTCAAAAGCAGTTTGATCAAGATCATAATATCAATCTAGTGTCAATGGAAGTAAACAGTAAATGCTGTA
GCTGGAGCCCTTAAAGCTTCTTTCAGATCTGCCAGATCCTTTAATCCATATTTCTTTCATCCAGAAC
TATTGGAAGCAGCAAAAATCCCGGATAAAACAGAACGCTTTCATGCCTTGAAAGAAATTTGTAAGAAAT
TCATCCTGTAAACTATGATGATTCAGATACGTGATAACACATCTAAACAGGGTTAGTCAGCAACATAAA
ATCAACCTAATGACAGCAGACAACCTTATCCATCTGTTTTTGGCCAACCTTGATGAGACCTGATTTTGAAA
ATCGAGAGTTTCTGTCTACTACTAAGATTCATCAATCTGTTGTTGAAACATTCATTCAGCAGTGTAGTT
TTTCTTTTACAATGGAGAAATTTAGAAACGACAAACATTGTGGCTCCTCCACCCTTCAAACCCAGGA
CAGTTGGTGAACCAATGGTGCCACTTCAGTTGCCGCCACCATTGCAACCTCAGCTGATACAACCACAAT
TACAAACGGATCCTTGGTATTATA

ACGCGTACGCGGCCGCTCGAGCAGAACTCATCTCAGAAGAGGATCTGGCAGCAATGATATCCTGGATT
ACAAGGATGACGACGATAAGGTTTAA

Protein Sequence: >RC217203 representing NM_001030055
 Red=Cloning site Green=Tags(s)

```

MMAKNKEPRPPSYTISIVGLSGTEKDKGNCGVGKSCLCNRFVRSKADEYYPEHTSVLSTIDFGGRVNVND
HFLYWGDIIQNSDGEVECKIHVIEQTEFIDDQTFLEPHRSTNLQPYIKRAAASKLQSAEKLMICTDQLGL
EQDFEQKQMPPEGKLNVDGFLLCIDVSGCNRKFDDQLKFVNNLFVQLSKSKKPVIIAATKCDECVDHYLR
EVQAFASNKKNLLVVETSARFNVNIETCF TALVQMLDKTRSKPKIIPYLDAYKTQRQLVVTATDKFEKLV
QTVRDYHATWKTYSNKLKNHPDYEEYINLEGRKARNTFSKHIEQLKQEHIRKRREEYINTLPRAFNTLL
PNLEEIEHLNWSEALKLMEKRADFQLCFVVELEKTPWDETDHIDKINDRRIPFDLLSTLEAEKVYQNHVQH
LISEKRRVEMKEFKKTKLEKIQFISPGQPWEEVMCFVMEDEAYKYITEADSKEVYGRHQREIVEKAKEEF
QEMLFHSELFDLNLATPSSDKMSEIHTVLSEEPYKALQKLAPDRESLLLKHIGFVYHPTKETCLSG
QNCTDIKVEQLLASSLLQLDHGRLRLYHDSTNIDKVNLFILGKDGLAQELANEIRTQSTDDEYALDGKIY
ELDLRPVDAKSPYFLSQLWTAAFKPHGCFVFNSEISL SFIGEFIGKIRTEASQIRKDKYMANLPFTLIL
ANQRDSISKNLPILRHQGQQLANKLQCPFVDVPAGTYPRKFNETQIKQALRGVLESVKHNLDDVSPIPAN
KDLSEADLRIVMCAMCGDPFVVDLILSPFLDSHSCSAAQAGQNNLMLDKIIGEKRRRIQITILSYHSSI
GVRKDELVHGYILVYSAKRKASMGMLRAFLSEVQDTIPVQLVAVTDSQADFFENEAIKELMTEGEHIATE
ITAKFTALYSLSQYHRQTEVFTLFFSDVLEKKNMIENSYLSDNTRESTHQSEDVFLPSPRDCFPYNNYPD
SDDDEAPPYPISIGDDVQLLPTPSDRSRYL DLEGNEYPIHSTPNCHDHERNHKVPPIKPKPVVPKTN
VKKLDPNLLKTI EAGIGKNPRKQTSRVPLAHPEDMDPSDNYAEPIDTIFKQKGYSD EIIYVPPDSSQNRK
IRNSFVNNTQGDEENGFSRDTSKSHGERRPSKYKYKSKTLFSKAKSYRRRTHSDASDDEAFTTSKTKRKG
RHRGSEEDPLLSPVETWKGIDNPAITSDQELDDKMKKKKTHKVKEDKKQKKKTKNFNPPTRRNWESNYF
GMPLQDLVTAEKPIPLFVEKCVFIEDTGLCTEGLYRVSGNKTDQDNIQKQFDQDHNINLVSM ETVNAV
AGALKAFFADLPDPLIPYSLHPELLEAAKIPDKTERLHALKEIVKKFHPVNYDVFVRYVITHLNRVSQQHK
INLMTADNLSICFWPTLMRPDFENRFLSTTKIHQSVVETFIQQCQFFYNGEIVETTNI VAPPPPSNPG
QLVEPMVPLQLPPLQPQLIQPQLQTDPLGII
  
```

TRTRPLEQKLISEEDLAANDILDYKDDDDKV

Chromatograms: https://cdn.origene.com/chromatograms/mg4428_d11.zip

Restriction Sites: SgfI-MluI

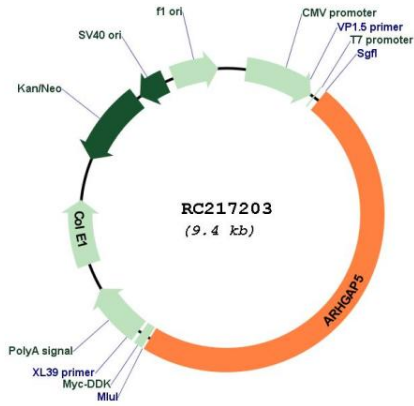
Cloning Scheme:



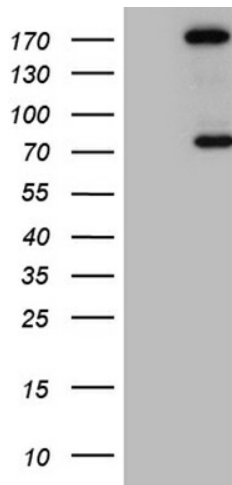
ACCN: NM_001030055

ORF Size:	4506 bp
OTI Disclaimer:	The molecular sequence of this clone aligns with the gene accession number as a point of reference only. However, individual transcript sequences of the same gene can differ through naturally occurring variations (e.g. polymorphisms), each with its own valid existence. This clone is substantially in agreement with the reference, but a complete review of all prevailing variants is recommended prior to use. More info
OTI Annotation:	This clone was engineered to express the complete ORF with an expression tag. Expression varies depending on the nature of the gene.
Components:	The ORF clone is ion-exchange column purified and shipped in a 2D barcoded Matrix tube containing 10ug of transfection-ready, dried plasmid DNA (reconstitute with 100 ul of water).
Reconstitution Method:	<ol style="list-style-type: none">1. Centrifuge at 5,000xg for 5min.2. Carefully open the tube and add 100ul of sterile water to dissolve the DNA.3. Close the tube and incubate for 10 minutes at room temperature.4. Briefly vortex the tube and then do a quick spin (less than 5000xg) to concentrate the liquid at the bottom.5. Store the suspended plasmid at -20°C. The DNA is stable for at least one year from date of shipping when stored at -20°C.
RefSeq:	NM_001030055.2
RefSeq Size:	9604 bp
RefSeq ORF:	4509 bp
Locus ID:	394
UniProt ID:	Q13017
Cytogenetics:	14q12
Protein Pathways:	Focal adhesion, Leukocyte transendothelial migration
MW:	172.3 kDa
Gene Summary:	Rho GTPase activating protein 5 negatively regulates RHO GTPases, a family which may mediate cytoskeleton changes by stimulating the hydrolysis of bound GTP. Two transcript variants encoding different isoforms have been found for this gene. [provided by RefSeq, Jul 2008]

Product images:



Circular map for RC217203



HEK293T cells were transfected with the pCMV6-ENTRY control (Cat# [PS100001], Left lane) or pCMV6-ENTRY ARHGAP5 (Cat# RC217203, Right lane) cDNA for 48 hrs and lysed. Equivalent amounts of cell lysates (5 ug per lane) were separated by SDS-PAGE and immunoblotted with anti-ARHGAP5 (Cat# [TA809437])(1:2000).