

Product datasheet for **RC217198**

IL17RD (NM_017563) Human Tagged ORF Clone

Product data:

Product Type:	Expression Plasmids
Product Name:	IL17RD (NM_017563) Human Tagged ORF Clone
Tag:	Myc-DDK
Symbol:	IL17RD
Synonyms:	HH18; IL-17RD; IL17RLM; SEF
Mammalian Cell Selection:	Neomycin
Vector:	pCMV6-Entry (PS100001)
E. coli Selection:	Kanamycin (25 ug/mL)



[View online »](#)

ORF Nucleotide
Sequence:

>RC217198 representing NM_017563
Red=Cloning site Blue=ORF Green=Tags(s)

TTTTGTAATACGACTCACTATAGGGCGGCCGGAATTCGTCGACTGGATCCGGTACCGAGGAGATCTGCC
GCC**CGGATCGCC**

ATGGCCCCGTGGCTGCAGCTCTGCTCCGCTTCTTTACGGTCAACGCCTGCCTCAACGGCTCGCAGCTGG
CTGTGGCCGCTGGCGGGTCCGGCCGCGCGGGGCGCCGACACCTGTGGCTGGAGGGGAGTGGGGCCAGC
CAGCAGAAACAGTGGGCTGTACAACATCACCTTCAAATATGACAATTGTACCACCTACTTGAATCCAGTG
GGGAAGCATGTGATTGCTGACGCCAGAATATCACCATCAGCCAGTATGCTTGCCATGACCAAGTGGCAG
TCACCATTCTTTGGTCCCAGGGGCCCTCGGCATCGAATTCCTGAAAGGATTTCCGGTAATACTGGAGGA
GCTGAAGTCGGAGGGAAGACAGTGCCAACAACCTGATTCTAAAGGATCCGAAGCAGCTCAACAGTAGCTTC
AAAAGAAGTGGAAATGGAATCTCAACCTTCTCTGAATATGAAATTTGAAACGGATTATTTTCGTAAGGTTG
TCCCTTTCTTCCATTAACGAAAGCAATTACCACCTTTCTTCTTTAGAACCCGAGCTGTGACCT
GTTGTTACAGCCGACAATCTAGCTTGTAAACCTTCTGGAAGCCTCGAACCTGAACATCAGCCAGCAT
GGCTCGGACATGCAGGTGCTTTCGACCATGCACCGCACAACTTCGGCTTCCGTTTCTTCTATCTTCACT
ACAAGTCAAGCACGAAGGACCTTTCAAGCGAAAGACCTGTAAGCAGGAGCAAACACAGAGACGACCAG
CTGCCTCCTTCAAATGTTTCTCCAGGGGATTATATAATTGAGCTGGTGGATGACACTAACACAACAAGA
AAAGTGATGCATTATGCCTAAAGCCAGTGCACCTCCCGTGGGCCGGGCCATCAGAGCCGTGGCCATCA
CAGTGCCACTGGTAGTCATATCGGCATTCGCGACGCTCTTCACTGTGATGTGCCGCAAGAAGCAACAAGA
AAATATATATTCACATTTAGATGAAGAGAGCTCTGAGTCTCCACATACACTGCAGCACTCCAAGAGAG
AGGCTCCGGCCGCGCCGAAGGCTTTCTCTGCTATTCCAGTAAAGATGGCCAGAATCACATGAATGTGCG
TCCAGTGTTCGCCTACTTCTCCAGGACTTCTGTGGCTGTGAGGTGGCTCTGGACCTGTGGGAAGACT
CAGCCTCTGTAGAGAAGGCAGAGAGAATGGGTCAATCCAGAAGATCCACGAGTCCAGTTCATCATTGTG
GTTTGTTCCAAAGGTATGAAGTACTTTGTGGACAAGAAGAACTACAAACAAAGGAGGTGGCCGAGGCT
CGGGGAAAGGAGAGCTTCTCTGGTGGCGGTGTCAGCCATTGCCGAAAAGCTCCGCCAGGCCAAGCAGAG
TTCGTCCGCGGCTCAGCAAGTTATCGCCGTCTACTTTGATTATTCCTGCGAGGGAGACGTCCCCGGT
ATCCTAGACCTGAGTACCAAGTACAGACTCATGGACAATCTTCTCAGCTCTGTTCCCACTTGCACCTCC
GAGACCACGGCTCCAGGAGCCGGGCAGCACACGCGACAGGGCAGCAGAAGGAACACTTCCGGAGCAA
GTCAGGCCGTCCCTATACGTCGCCATTTGCAACATGCACCAGTTTATTGACGAGGAGCCGACTGGTTC
GAAAAGCAGTTTCCCTTCCATCCTCCTCCACTGCGCTACCGGAGCCAGTCTTGAGAAATTTGATT
CGGGCTTGGTTTTAAATGATGTCATGTGCAAAACCAGGGCCTGAGAGTGACTTCTGCCTAAAGGTAGAGGC
GGCTGTTCTTGGGGCAACCGGACCAGCCGACTCCAGCACGAGAGTACAGCATGGGGGCTGGACCAAGAC
GGGGAGGCCCGCCTGCCCTTGACGGTAGCGCCGCCCTGCAACCCTGTGCACACGGTGAAGCCGGCA
GCCCTCGGACATGCCGCGGACTCAGGCATCTATGACTCGTCTGTGCCCTCATCCGAGCTGTCTTGCC
ACTGATGGAAGGACTCTCGACGGACCAGACAGAAACGCTTCCCTGACGGAGAGCGTGTCTCTCTTCA
GGCCTGGGTGAGGAGAACCTCCTGCCCTTCTTCCAAGCTCCTCTTCTGGGTGATGCAAGCAGATC
TTGGTTGCCGAGCTACACTGATGAACTCCACGCGGTGCGCCCTTG

ACGCGTACGCGGCCGCTCGAGCAGAAACTCATCTCAGAAGAGGATCTGGCAGCAAATGATATCCTGGATT
ACAAGGATGACGACGATAAGGTTTAA

OTI Disclaimer: Due to the inherent nature of this plasmid, standard methods to replicate additional amounts of DNA in E. coli are highly likely to result in mutations and/or rearrangements. Therefore, OriGene does not guarantee the capability to replicate this plasmid DNA. Additional amounts of DNA can be purchased from OriGene with batch-specific, full-sequence verification at a reduced cost. Please contact our customer care team at custsupport@origene.com or by calling 301.340.3188 option 3 for pricing and delivery.

The molecular sequence of this clone aligns with the gene accession number as a point of reference only. However, individual transcript sequences of the same gene can differ through naturally occurring variations (e.g. polymorphisms), each with its own valid existence. This clone is substantially in agreement with the reference, but a complete review of all prevailing variants is recommended prior to use. [More info](#)

OTI Annotation: This clone was engineered to express the complete ORF with an expression tag. Expression varies depending on the nature of the gene.

Components: The ORF clone is ion-exchange column purified and shipped in a 2D barcoded Matrix tube containing 10ug of transfection-ready, dried plasmid DNA (reconstitute with 100 ul of water).

Reconstitution Method:

1. Centrifuge at 5,000xg for 5min.
2. Carefully open the tube and add 100ul of sterile water to dissolve the DNA.
3. Close the tube and incubate for 10 minutes at room temperature.
4. Briefly vortex the tube and then do a quick spin (less than 5000xg) to concentrate the liquid at the bottom.
5. Store the suspended plasmid at -20°C. The DNA is stable for at least one year from date of shipping when stored at -20°C.

RefSeq: [NM_017563.5](#)

RefSeq Size: 8736 bp

RefSeq ORF: 2220 bp

Locus ID: 54756

UniProt ID: [Q8NFM7](#)

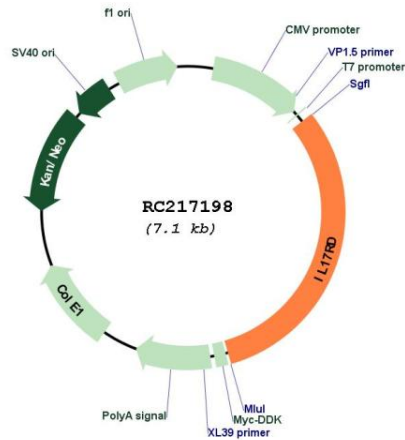
Cytogenetics: 3p14.3

Protein Families: Druggable Genome

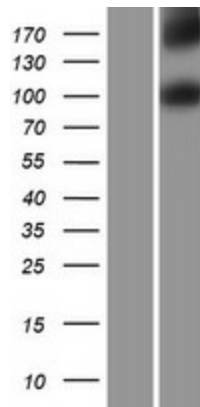
MW: 82.2 kDa

Gene Summary: This gene encodes a membrane protein belonging to the interleukin-17 receptor (IL-17R) protein family. The encoded protein is a component of the interleukin-17 receptor signaling complex, and the interaction between this protein and IL-17R does not require the interleukin. The gene product also affects fibroblast growth factor signaling, inhibiting or stimulating growth through MAPK/ERK signaling. Alternate splicing generates multiple transcript variants encoding distinct isoforms. [provided by RefSeq, Jan 2016]

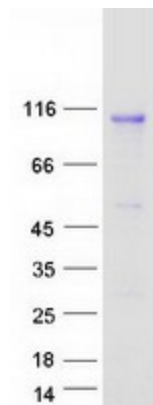
Product images:



Circular map for RC217198



Western blot validation of overexpression lysate (Cat# [LY413705]) using anti-DDK antibody (Cat# [TA50011-100]). Left: Cell lysates from untransfected HEK293T cells; Right: Cell lysates from HEK293T cells transfected with RC217198 using transfection reagent MegaTran 2.0 (Cat# [TT210002]).



Coomassie blue staining of purified IL17RD protein (Cat# [TP317198]). The protein was produced from HEK293T cells transfected with IL17RD cDNA clone (Cat# RC217198) using MegaTran 2.0 (Cat# [TT210002]).