

Product datasheet for **RC217191**

MAP4K5 (NM_006575) Human Tagged ORF Clone

Product data:

Product Type:	Expression Plasmids
Product Name:	MAP4K5 (NM_006575) Human Tagged ORF Clone
Tag:	Myc-DDK
Symbol:	MAP4K5
Synonyms:	GCKR; KHS; KHS1; MAPKKKK5
Mammalian Cell Selection:	Neomycin
Vector:	pCMV6-Entry (PS100001)
E. coli Selection:	Kanamycin (25 ug/mL)



[View online »](#)

ORF Nucleotide Sequence:

>RC217191 representing NM_006575
 Red=Cloning site Blue=ORF Green=Tags(s)

TTTTGTAATACGACTCACTATAGGGCGGCCGGAATTCGTCGACTGGATCCGGTACCGAGGAGATCTGCC
 GCC**CGCATCGCC**

ATGGAGGCCCGCTGCGGCCTGCCGCGGACATCCTGAGGCGGAACCCGCAGCAGGACTACGAACTCGTCC
 AGAGGGTCGGCAGCGGCACCTACGGGGAGCTCTATAAGGCCAGAAATGTACACACAGGAGAGCTGGCTGC
 AGTAAAAATCATTAAATTGGAGCCTGGAGATGATTTTTCTTTGATTCAACAAGAAATATTTATGGTTAAA
 GAATGTAAACATTGTAACATCGTTGCCACTTTGGGAGTTATCTTAGTCGGGAAAAACTATGGATTTGTA
 TGGAACTACTGTGGTGGCGGATCACTTCAAGATATTTACCATGTTACTGGACCATTATCAGAATTGCAAA
 AGCCTATGTATGCAGAGAAACCTTACAGGGTCTTGCCATTTGCATACTAAAGGCAAAATGCATAGAGAT
 ATCAAAGTGCTAATATTTTATTGACAGACCATGGCGATGTAATAATTAGCTGACTTTGGTGTGGCTGCAA
 AAATAACAGCTACCATTGCAAAACGAAATCTTTCATTGGCACCCCTTACTGGATGGCCCCAGAAGTTGC
 AGCAGTAGAGAAGAAATGGTGGCTACAACCAACTCTGTGATATCTGGGCAGTAGGAATAACAGCAATTGAA
 CTTGGAGAATTCAGCCACCTATGTTTGATCTCCACCCAATGAGGGCTCTCTTCTTAATGTCAAAAAGTA
 ATTTTCAGCCTCCAAAATAAAGGACAAAAAATAAATGGTCATCAACATCCATAATTTTGTCAAAAATAGC
 ACTAACAAAAACCCAAAAAAGACCAACTGCTGAAAGACTTCTGACTCACACTTTTGTGCACAGCCA
 GGTCTCTCTAGAGCCCTAGCAGTTGAACTGTTAGACAAAGTGAACAATCCAGATAACCACGCACATTACA
 CTGAAGCAGATGACGATGACTTTGAGCCCCATGCAATCATTTCGCATACCATAGATCTACAAACAGGAA
 TGCCAGAGCTGAACGGACAGCTTCAAGAAATAAATTTGACAAATTACAATTTGAACCTCCTCTGAGAAAA
 GAAACAGAAGCAGAGATGAAATGGGATTGTCTCAGACCCAAATTTTCATGTTACAGTGGAACTCCTTTTG
 TTGATGTTGCAAAATACTGGCAAAATCAACCTCAAAACGTGCAATACCACCTCCCCTACCTCCTAAGCCAAG
 GATAAGCAGTTACCCTGAAGACAACCTTTCCGGATGAAGAAAAAGCATCAACCATAAAAACATTGTCCTGAT
 TCAGAAAGCAGAGCTCCCAAAATCTCAGAAGACAGAGTAGCCAAAGTTGTGGCCTGTGGCAGAGACTT
 CTTCTATTGGAATGGTATGTTTCAAACACTGATGAGTGAATAACAGAAGGATCAGCACAAGCACC
 ACAGTTACCACGAAAAAAGGACAAACGAGACTTCCCTAAACCAGCCATCAATGGCCTTCCACCCACCCCA
 AAAGTTCTGATGGGAGCATGCTTTTCAAAGTTTTTGTGGCTGTCTTTGAAAATTAATGTGCAACAT
 CCTGGATACATCCTGATACAAAAGATCAGTACATATTTTTGGAAGTGAAGATGGTATTTACACACTGAA
 TCTCAATGAGCTACATGAGGCAACGATGGAACAGTTATTTCCACGGAAGTACTTGGCTGTATGTTATC
 AATAACTTTAATGTCATTATCAGAAGGAAAAACCTTTAGCTCTACTCTCACAATCTTATAGCTTTGT
 TTGAACATGCCAAAAACAGGATTAGCTGCCATATTCAAACCTCACAGTTTCCAGACCGAATACTACC
 AAGAAAATTCGCTTTAACAAACAAGATTCTGATACAAAAGGCTGCCACAAATGTTGCATAGTCAGAAAC
 CCTTACATGGGACATAAATACCTCTGTGGAGCTTTACAGTCTGGAATGTTTTACTTCAAGTGGTATGAGC
 CAATGCAGAAATTCATGTTGATAAAGCACTTTGATTTTCTTTGCCAAGTCCCTTGAATGTTTTGAAAT
 GCTGGTATACCTGAACAGGAATACCCTATGGTCTGTGTAGCTATTAGCAAAGGCACTGAATCGAATCAG
 GTAGTTAGTTGAGACAATCAATTTGAACTCTGCATCTTCATGGTTTACAGAAATTTGGTGCAGGCAGCC
 AGCAGTTAGATTCATTCATGTAACACAGTTGGAGAGAGATACCGTTTTAGTGTGTTTACAGAAATTTGT
 GAAAATTTGTAATCTACAAGGAAAAATTAATAAAGTAAAGAACTGGCCTCTGAGTTAAGTTTTGATTTT
 CGCATTGAATCTGTAGTATGCCTTCAAGACAGTGTGTTGGCTTTCTGGAACATGGGATGCAGGGTAAAA
 GCTTCAAGTCAGATGAGTTACCAGGAGATTTAGATGAAACAAGATTTTCCGCTTATTAGGATCAGA
 CAGGGTTGCTGTTTTGAAAGTAGGCCAACAGAAAATCCTACTGCACACAGCAATCTCTACATCTTGGCT
 GGACATGAAAATAGTTAC

ACGCGTACGCGGCCGCTCGAGCAGAAACTCATCTCAGAAGAGGATCTGGCAGCAATGATATCCTGGATT
 ACAAGGATGACGACGATAAGGTTTAA

Protein Sequence: >RC217191 representing NM_006575
 Red=Cloning site Green=Tags(s)

MEAPLRPAADILRRNPQQDYELVQRVSGTYGDVYKARNVHTGELAAVKIIKLEPGDDFLSIQQEIFMVK
 ECKHCNIVAYFGSYLSREKLWICMEYCGGSLQDIYHVTGPLSELQIAYVCRETLQGLAYLHTKGMHRD
 IKGANILLTDHGDVKLADFGVAAKITATIAKRKSFIGTPYWMapeVAAVEKNGGYNQLCDIWAvgITAIE
 LGELQPPMFDLHPMRALFLMSKSNFQPPKLDKTKWSSTFHNFVKIALTKNPKKRPTAERLLTHTFVAQP
 GLSRALAVELLDKVNNPDNHAYTEADDDDFEPHAIIRHTIRSTNRNARAERTASEINFDKLQFEPPLRK
 ETEARDEMGLSSDPNFMQLQWNPFDGANTGKSTSKRAIPPLPPKPRISSYPEDNFPDEEKASTIKHCPD
 SESRAPQILRRQSSPSCGPVAETSSIGNGDGISKLMSENTEGSAQAPQLPRKDKDRDFPKPAINGLPPTP
 KVLMGACFSKVFDCPLKINCATSWIHPDTKDQYIIFGTEDGIYTLNLNELHEATMEQLFPRKCTWLVI
 NNLMSLSEGKTFQLYSHNLIALFEHAKKPLAAHIQTHRFPDRILPRKFALTTKIPDTKGCHKCCIVRN
 PYMGHKYLCGALQSGIVLLQWYEPMQFMLIKHDFPLPSPLNVFEMLVIPEQEYPMVCAISKGTESNQ
 VVQFETINLNSASSWFTIEGAGSQQLDSIHVTQLERDTLVCLDKFVKIVNLQGLKSSKKLASELSFDF
 RIESVCLQDSVLAFWKHGMQGSFKSDEVTQEISDETRVFRLLGSDRVVLESRPTENPTAHSNLYILA
 GHENSY

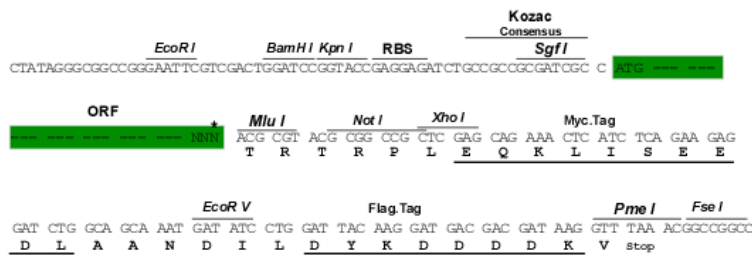
TRTRPLEQKLISEEDLAANDILDYKDDDDKV

Chromatograms: https://cdn.origene.com/chromatograms/mk6104_f05.zip

Restriction Sites: SgfI-MluI

Cloning Scheme:

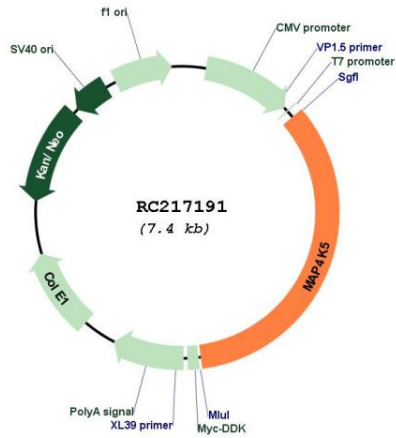
Cloning sites used for ORF Shuttling:



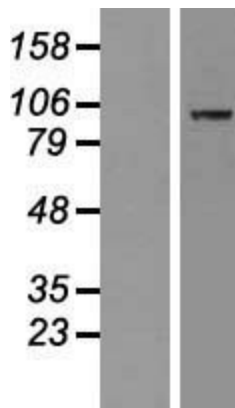
* The last codon before the Stop codon of the ORF

ACCN:	NM_006575
ORF Size:	2538 bp
OTI Disclaimer:	The molecular sequence of this clone aligns with the gene accession number as a point of reference only. However, individual transcript sequences of the same gene can differ through naturally occurring variations (e.g. polymorphisms), each with its own valid existence. This clone is substantially in agreement with the reference, but a complete review of all prevailing variants is recommended prior to use. More info
OTI Annotation:	This clone was engineered to express the complete ORF with an expression tag. Expression varies depending on the nature of the gene.
Components:	The ORF clone is ion-exchange column purified and shipped in a 2D barcoded Matrix tube containing 10ug of transfection-ready, dried plasmid DNA (reconstitute with 100 ul of water).
Reconstitution Method:	<ol style="list-style-type: none">1. Centrifuge at 5,000xg for 5min.2. Carefully open the tube and add 100ul of sterile water to dissolve the DNA.3. Close the tube and incubate for 10 minutes at room temperature.4. Briefly vortex the tube and then do a quick spin (less than 5000xg) to concentrate the liquid at the bottom.5. Store the suspended plasmid at -20°C. The DNA is stable for at least one year from date of shipping when stored at -20°C.
RefSeq:	NM_006575.5
RefSeq Size:	4373 bp
RefSeq ORF:	2541 bp
Locus ID:	11183
UniProt ID:	Q9Y4K4
Cytogenetics:	14q22.1
Domains:	pkinase, CNH
Protein Families:	Druggable Genome, Protein Kinase
MW:	94.9 kDa
Gene Summary:	This gene encodes a member of the serine/threonine protein kinase family, that is highly similar to yeast SPS1/STE20 kinase. Yeast SPS1/STE20 functions near the beginning of the MAP kinase signal cascades that is essential for yeast pheromone response. This kinase was shown to activate Jun kinase in mammalian cells, which suggested a role in stress response. Two alternatively spliced transcript variants encoding the same protein have been described for this gene. [provided by RefSeq, Jul 2008]

Product images:



Circular map for RC217191



Western blot validation of overexpression lysate (Cat# [LY416550]) using anti-DDK antibody (Cat# [TA50011-100]). Left: Cell lysates from untransfected HEK293T cells; Right: Cell lysates from HEK293T cells transfected with RC217191 using transfection reagent MegaTran 2.0 (Cat# [TT210002]).