

## Product datasheet for RC217184

### CT47A2 (NM\_001080145) Human Tagged ORF Clone

#### Product data:

Product Type:	Expression Plasmids
Product Name:	CT47A2 (NM_001080145) Human Tagged ORF Clone
Tag:	Myc-DDK
Symbol:	CT47A2
Synonyms:	CT47.2
Mammalian Cell Selection:	Neomycin
Vector:	pCMV6-Entry (PS100001)
E. coli Selection:	Kanamycin (25 ug/mL)
ORF Nucleotide Sequence:	>RC217184 representing NM_001080145 Red=Cloning site Blue=ORF Green=Tags(s)

TTTTGTAATACGACTCACTATAGGGCGGCCGGAATTCGTCGACTGGATCCGGTACCGAGGAGATCTGCC  
GCC**CGATCGCC**

ATGTCTGCCACAGGGGACCGACACCCGACCCAAGGGGACCAGGAGGCCCGGTAAGCCAGGAGGGAGCAC  
AGGCCGAGGGCGCCGAGCTGGTAACCAGGAGGGCGCGACTCCGGCCCCGACAGCAGCGACGTGGTGCC  
TGCGGCCGAGGTGGTCGGAGTCGCAGGGCCCGTGAAGGCCTCGGGGAGGAGGGTGAGCAGGCGGCA  
GGCCTGGCCGAGTCCCCGGGGCGGGAGCGCCGAGGAGGACTCAGATATCGGGCCCGCAGCGAGGAAG  
AGGAGGAGGAAGAGGGGAACGAGGCGGCCAACTTCGACTTGGCGGTGGTCGCCCGTCTACCCGGCGTC  
GGCATTCACTTCGTGCTCCTGGACATGGTCCACTCCCTTCTCCACCGCCTCTCTACAACGACCACATC  
CTCATAGAGAACCGTCAACTCAGCCGCCTGATGGTGGGGCCACACGCTGCTGCGCGCAACCCCTGGGGCA  
ACCTCCCCCGCTGCTGCTGCCCCAGAGGCTGGGTGCAGGGGCCGAGCCCGGGCGGGCAGGGCCCTGGG  
CCTGATCCAGGAGGCCGATCGGTCCCAGAGCCTGCAGTGCCAGCTGACCTGGCCGAGATGGCCAGGGAG  
CCCGGGAGGAGGCCGAGAGGAGAAGCTCTCAGAGGAGGCCACAGAGGAACCAGACGCAGAGGAACCGG  
CCACAGAAGAACCACCGCACAGGAGGCCACGGCCCCAGAGGAAGTCACTAAATCTCAGCCCCAAAAGTG  
GGATGAAGAGGCCAAGATGCTGCAGGCCGAGGAAGAGAAAACAAGAAAAAGAGAAGGATGCGGAAAAC  
AAGGTGAAGAACTCCAAGGGACC

**ACGCGT**ACGCGGGCCGCTCGAGCAGAAACTCATCTCAGAAGAGGATCTGGCAGCAAATGATATCCTGGATT  
ACAAGGATGACGACGATAAGGTTTAA



[View online »](#)

**Protein Sequence:** >RC217184 representing NM\_001080145  
Red=Cloning site Green=Tags(s)

MSATGDRHPTQGDQEAPVSQEGAQAEAAGAGNQEGGDSGPDSSDVVPAAEVVGAVGVEGLGEEEGEQAA  
 GLAAVPRGGSAAEDSDIGPATEEEEEEGNEAANFDLAVVARRYPASGIHFVLLDMVHSLHLRLSHNDHI  
 LIENRQLSRLMVGPHAAAARNPWGNLPPLLLPQRLGAGAAAARAGEGLGLIQEAASVPEPAVPADLAEMARE  
 PAEEAAEEKLSEEATEEPDAEEPATEEPTAQEATAPEEVTKSQPEKWDEEAQDAAGEEEKEQEKEKDAEN  
 KVKNSKGT

TRTRPLEQKLISEEDLAANDILDYKDDDDKV

**Chromatograms:** [https://cdn.origene.com/chromatograms/ja1474\\_h12.zip](https://cdn.origene.com/chromatograms/ja1474_h12.zip)

**Restriction Sites:** SgfI-MluI

**Cloning Scheme:**



**ACCN:** NM\_001080145

**ORF Size:** 864 bp

**OTI Disclaimer:** The molecular sequence of this clone aligns with the gene accession number as a point of reference only. However, individual transcript sequences of the same gene can differ through naturally occurring variations (e.g. polymorphisms), each with its own valid existence. This clone is substantially in agreement with the reference, but a complete review of all prevailing variants is recommended prior to use. [More info](#)

**OTI Annotation:** This clone was engineered to express the complete ORF with an expression tag. Expression varies depending on the nature of the gene.

**Components:** The ORF clone is ion-exchange column purified and shipped in a 2D barcoded Matrix tube containing 10ug of transfection-ready, dried plasmid DNA (reconstitute with 100 ul of water).

**Reconstitution Method:**

1. Centrifuge at 5,000xg for 5min.
2. Carefully open the tube and add 100ul of sterile water to dissolve the DNA.
3. Close the tube and incubate for 10 minutes at room temperature.
4. Briefly vortex the tube and then do a quick spin (less than 5000xg) to concentrate the liquid at the bottom.
5. Store the suspended plasmid at -20°C. The DNA is stable for at least one year from date of shipping when stored at -20°C.

**RefSeq:** [NM\\_001080145.1](#), [NP\\_001073614.1](#)

**RefSeq Size:** 1294 bp

**RefSeq ORF:** 867 bp

**Locus ID:** 728090

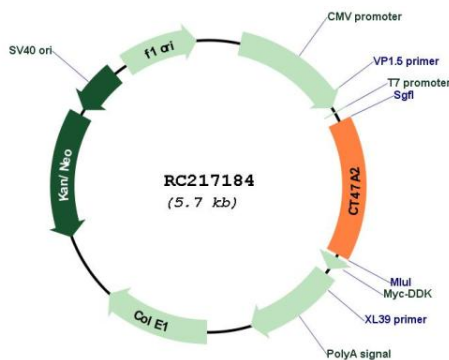
**UniProt ID:** [Q5JQC4](#)

**Cytogenetics:** Xq24

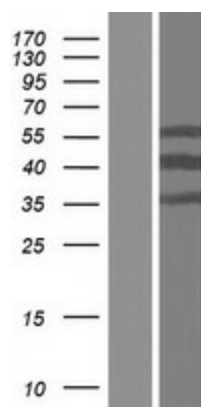
**MW:** 29.9 kDa

**Gene Summary:** This locus represents a member of the cancer/testis gene family 47. This family, also known as CT47, is comprised of 13 nearly identical loci clustered at Xq24. [provided by RefSeq, Sep 2010]

**Product images:**



Circular map for RC217184



Western blot validation of overexpression lysate (Cat# [LY421601]) using anti-DDK antibody (Cat# [TA50011-100]). Left: Cell lysates from untransfected HEK293T cells; Right: Cell lysates from HEK293T cells transfected with RC217184 using transfection reagent MegaTran 2.0 (Cat# [TT210002]).