

## Product datasheet for RC217163

### MFGE8 (NM\_005928) Human Tagged ORF Clone

#### Product data:

|                           |   |
|---------------------------|---|
| Product Type:             | Expression Plasmids   |
| Product Name:             | MFGE8 (NM_005928) Human Tagged ORF Clone                                    |
| Tag:                      | Myc-DDK   |
| Symbol:                   | MFGE8   |
| Synonyms:                 | BA46; EDIL1; HMFG; hP47; HsT19888; MFG-E8; MFGM; OAcGD3S; SED1; SPAG10      |
| Mammalian Cell Selection: | Neomycin  |
| Vector:                   | pCMV6-Entry (PS100001)  |
| E. coli Selection:        | Kanamycin (25 ug/mL)  |
| ORF Nucleotide Sequence:  | >RC217163 representing NM_005928<br>Red=Cloning site Blue=ORF Green=Tags(s) |

TTTTGTAATACGACTCACTATAGGGCGGCCGGAATTCGTCGACTGGATCCGGTACCGAGGAGATCTGCC  
GCC**CGATCGCC**

ATGCCGCGCCCCGCTGCTGGCCGCGCTGTGCGGCGCGCTGCTCTGCGCCCCAGCCTCCTCGTCGCCC  
TGGATATCTGTTCAAAAACCCCTGCCACAACGGTGGTTATGCGAGGAGATTTCCCAAGAAGTGCAGG  
AGATGTCTTCCCCTCGTACACCTGCACGTGCCTTAAGGGCTACGCGGGCAACCACTGTGAGACGAAATGT  
GTCGAGCCACTGGCCTGGAGAATGGGAACATTGCCAACTCACAGATCGCCGCTCGTCTGTGCGTGTGA  
CCTTCTTGGGTTTGCAGCATTGGGTCCCGGAGCTGGCCCGCTGAACCGCGCAGGCATGGTCAATGCCTG  
GACACCCAGCAGCAATGACGATAAACCCTGGATCCAGGTGAACCTGCTGCGGAGGATGTGGGTAACAGGT  
GTGGTGACGCAGGGTGCCAGCCGCTTGGCCAGTCATGAGTACCTGAAGGCCTTCAAGGTGGCCTACAGCC  
TTAATGGACACGAATTCGATTTTCATCCATGATGTTAATAAAAAACACAAGGAGTTTGTGGGTAACGGAA  
CAAAAACGCGGTGCATGTCAACCTGTTTGGAGCCCTGTGGAGGCTCAGTACGTGAGATTGTACCCACG  
AGCTGCCACACGGCCTGCACTCTGCGCTTTGAGCTACTGGGCTGTGAGCTGAACGGATGCGCCAATCCCC  
TGGCCTGAAGAATAACAGCATCCCTGACAAGCAGATCACGGCCTCCAGCAGCTACAAGACCTGGGGCTT  
GCATCTTTCAGCTGGAACCCCTCCTATGCACGGCTGCAGGTGGACCTGGGCTCCTCGAAGGAGGTGACAGGCATCA  
GGGAGCTACGGTAACGATCAGTGGCTGCAGGTGGACCTGGGCTCCTCGAAGGAGGTGACAGGCATCATCA  
CCAGGGGCCCCGTAACCTTTGGCTCTGTCCAGTTTGTGGCATCCTACAAGGTTGCCTACAGTAATGACAG  
TGCGAACTGGACTGAGTACCAGGACCCAGGACTGGCAGCAGTAAGATCTTCCCTGGCAACTGGGACAAC  
CACTCCACAAGAAGAACTTGTGTTGAGACGCCATCCTGGCTCGTATGTGCGCATCCTGCCTGTAGCCT  
GGCACAACCGCATCGCCCTGCGCCTGGAGCTGCTGGGCTGT

**ACGCGT**ACGCGGCCGCTCGAGCAGAACTCATCTCAGAAGAGGATCTGGCAGCAATGATATCCTGGATT  
ACAAGGATGACGACGATAAGGTTTAA



[View online »](#)

**Protein Sequence:** >RC217163 representing NM\_005928  
Red=Cloning site Green=Tags(s)

MPPRLLAALCGALLCAPSLLVALDICKNPCHNGGLCEEISQEVRGDVFPSYCTCLKGYAGNHCETKC  
 VEPLGLENGNIANSQIAASSVRVTFGLQHWPELARLNLRAGMVNAWTPSSNDDNPWIQVNLRRMWVTG  
 VVTQGASRLASHEYLKAFKVAAYSLNGHEFDIHDVNKKHKEFVGNWNKNVHVNLFETPVEAQYVRLYPT  
 SHTACTLRFELLGCELNGCANPLGLKNNIPDKQITASSYKTWGLHLFSWNPYARLDKQGNFNAWVA  
 GSYGNDQWLQVDLGSSEKVTGIIITQGARNFQSVQFVASYKVAYSNDSANWTEYQDPRTGSSKIFPGNWDN  
 HSHKKNLFETPILARYVRILPVAWHNRIALRLELLGC

TRTRPLEQKLISEEDLAANDILDYKDDDDKV

**Chromatograms:** [https://cdn.origene.com/chromatograms/mk6046\\_f06.zip](https://cdn.origene.com/chromatograms/mk6046_f06.zip)

**Restriction Sites:** SgfI-MluI

**Cloning Scheme:**



\* The last codon before the Stop codon of the ORF

**ACCN:** NM\_005928

**ORF Size:** 1161 bp

**OTI Disclaimer:** The molecular sequence of this clone aligns with the gene accession number as a point of reference only. However, individual transcript sequences of the same gene can differ through naturally occurring variations (e.g. polymorphisms), each with its own valid existence. This clone is substantially in agreement with the reference, but a complete review of all prevailing variants is recommended prior to use. [More info](#)

**OTI Annotation:** This clone was engineered to express the complete ORF with an expression tag. Expression varies depending on the nature of the gene.

**Components:** The ORF clone is ion-exchange column purified and shipped in a 2D barcoded Matrix tube containing 10ug of transfection-ready, dried plasmid DNA (reconstitute with 100 ul of water).

**Reconstitution Method:**

1. Centrifuge at 5,000xg for 5min.
2. Carefully open the tube and add 100ul of sterile water to dissolve the DNA.
3. Close the tube and incubate for 10 minutes at room temperature.
4. Briefly vortex the tube and then do a quick spin (less than 5000xg) to concentrate the liquid at the bottom.
5. Store the suspended plasmid at -20°C. The DNA is stable for at least one year from date of shipping when stored at -20°C.

**RefSeq:** [NM\\_005928.4](#)

**RefSeq Size:** 1934 bp

**RefSeq ORF:** 1164 bp

**Locus ID:** 4240

**UniProt ID:** [Q08431](#)

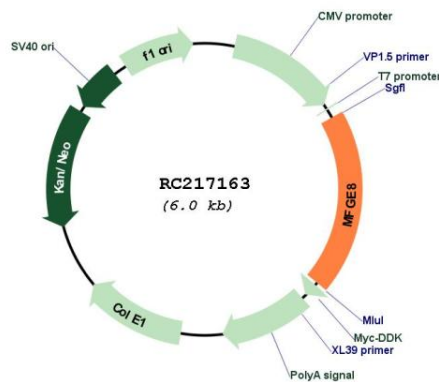
**Cytogenetics:** 15q26.1

**Domains:** F5\_F8\_type\_C, EGF, EGF

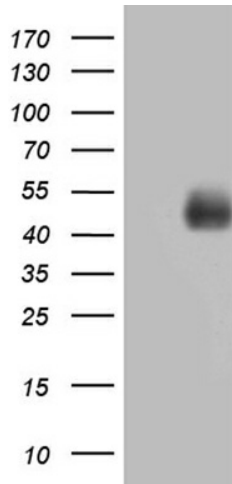
**MW:** 42.9 kDa

**Gene Summary:** This gene encodes a preproprotein that is proteolytically processed to form multiple protein products. The major encoded protein product, lactadherin, is a membrane glycoprotein that promotes phagocytosis of apoptotic cells. This protein has also been implicated in wound healing, autoimmune disease, and cancer. Lactadherin can be further processed to form a smaller cleavage product, medin, which comprises the major protein component of aortic medial amyloid (AMA). Alternative splicing results in multiple transcript variants. [provided by RefSeq, Jul 2015]

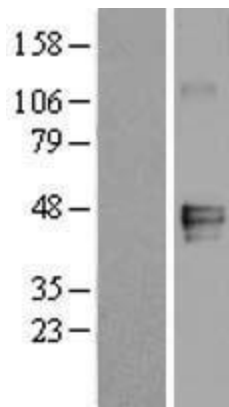
### Product images:



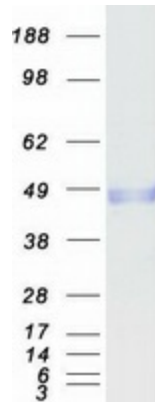
Circular map for RC217163



HEK293T cells were transfected with the pCMV6-ENTRY control (Cat# [PS100001], Left lane) or pCMV6-ENTRY MFGE8 (Cat# RC217163, Right lane) cDNA for 48 hrs and lysed. Equivalent amounts of cell lysates (5 ug per lane) were separated by SDS-PAGE and immunoblotted with anti-MFGE8 (Cat# [TA809279])(1:2000). Positive lysates [LY401796] (100ug) and [LC401796] (20ug) can be purchased separately from OriGene.



Western blot validation of overexpression lysate (Cat# [LY401796]) using anti-DDK antibody (Cat# [TA50011-100]). Left: Cell lysates from untransfected HEK293T cells; Right: Cell lysates from HEK293T cells transfected with RC217163 using transfection reagent MegaTran 2.0 (Cat# [TT210002]).



Coomassie blue staining of purified MFGE8 protein (Cat# [TP317163]). The protein was produced from HEK293T cells transfected with MFGE8 cDNA clone (Cat# RC217163) using MegaTran 2.0 (Cat# [TT210002]).