

Product datasheet for **RC217145**

FAM180A (NM_205855) Human Tagged ORF Clone

Product data:

Product Type:	Expression Plasmids
Product Name:	FAM180A (NM_205855) Human Tagged ORF Clone
Tag:	Myc-DDK
Symbol:	FAM180A
Synonyms:	UNQ1940
Mammalian Cell Selection:	Neomycin
Vector:	pCMV6-Entry (PS100001)
E. coli Selection:	Kanamycin (25 ug/mL)
ORF Nucleotide Sequence:	>RC217145 representing NM_205855 Red=Cloning site Blue=ORF Green=Tags(s)

TTTTGTAATACGACTCACTATAGGGCGCCGGGAATTCGTCGACTGGATCCGGTACCGAGGAGATCTGCC
GCC**CGATCGCC**

ATGCATTGGAAGATGTTGCTGCTTCTGCTGTTGTATTACAATGCTGAGGCTTCTATGTGCCACAGGTGGA
GCAGGGCTGTGCTCTTCCCTGCCGCCACCGGCCAAAGAGGTCTCATCACTGCCATTGAACCCAGTCTCT
GCAGACCTCCCTGGAGGAGGTGGAGCTGCTCTACGAGTTCCTGCTGGCCGAACCTTGAGATCAGCCCTGAC
CTGCAGATCTCCATCAAGGACGAGGAGCTGGCCTCCTTGCAGGAGCCTCAGACTTCCGACCCGTCTGCA
ACAACGTCATCCCAAGAGCATCCAGACATCCGCGGCTCAGCGCCAGCCTCTCCAGCCACCCTGGCAT
CCTCAAGAAAGAAGACTTTGAAAGGACAGTGCTGACCCTGGCCTACACAGCCTACCGCACAGCCCTGTCC
CACGGCCATCAGAAGGACATCTGGGCGCAGTCCCTCGTTAGCCTCTTCCAGGCCCTGAGGCACGACTTGA
TGGCTCCTCACAGCCGGGAGTACCTCCC

ACGCGTACGCGGCCGCTCGAGCAGAACTCATCTCAGAAGAGGATCTGGCAGCAAATGATATCCTGGATT
ACAAGGATGACGACGATAAGGTTTAA

Protein Sequence:	>RC217145 representing NM_205855 Red=Cloning site Green=Tags(s)
-------------------	--------------------------------------------------------------------

MHWKMLLLLLLYNAEASMCHRWSRAVLFPAHRPKRSSLPLNPVLQTSLEEVELLYEFLLAELEISPD
LQISIKDEELASLRKASDFRTVCNNVIPKSIPIRRLSASLSSHPGILKKEDFERTVLTLAYTAYRTALS
HGHQKDIWAQSLVSLFQALRHDLMRSSQPGVPP

TRTRPLEQKLISEEDLAANDILDYKDDDDKV

Chromatograms:	https://cdn.origene.com/chromatograms/mk8017_g12.zip
----------------	-------------------------------------------------------------------------------------------------------------------------



[View online »](#)

Restriction Sites: SgfI-MluI

Cloning Scheme:



ACCN: NM_205855

ORF Size: 519 bp

OTI Disclaimer: The molecular sequence of this clone aligns with the gene accession number as a point of reference only. However, individual transcript sequences of the same gene can differ through naturally occurring variations (e.g. polymorphisms), each with its own valid existence. This clone is substantially in agreement with the reference, but a complete review of all prevailing variants is recommended prior to use. [More info](#)

OTI Annotation: This clone was engineered to express the complete ORF with an expression tag. Expression varies depending on the nature of the gene.

Components: The ORF clone is ion-exchange column purified and shipped in a 2D barcoded Matrix tube containing 10ug of transfection-ready, dried plasmid DNA (reconstitute with 100 ul of water).

Reconstitution Method:

1. Centrifuge at 5,000xg for 5min.
2. Carefully open the tube and add 100ul of sterile water to dissolve the DNA.
3. Close the tube and incubate for 10 minutes at room temperature.
4. Briefly vortex the tube and then do a quick spin (less than 5000xg) to concentrate the liquid at the bottom.
5. Store the suspended plasmid at -20°C. The DNA is stable for at least one year from date of shipping when stored at -20°C.

RefSeq: [NM_205855.4](#)

RefSeq Size: 1671 bp

RefSeq ORF: 522 bp

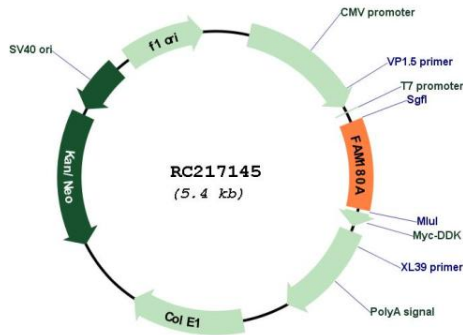
Locus ID: 389558

UniProt ID: [Q6UWF9](#)

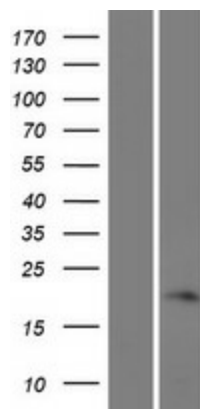
Cytogenetics: 7q33

MW: 19.6 kDa

Product images:



Circular map for RC217145



Western blot validation of overexpression lysate (Cat# [LY404204]) using anti-DDK antibody (Cat# [TA50011-100]). Left: Cell lysates from untransfected HEK293T cells; Right: Cell lysates from HEK293T cells transfected with RC217145 using transfection reagent MegaTran 2.0 (Cat# [TT210002]).