

Product datasheet for **RC217138**

RBFOX2 (NM_001082576) Human Tagged ORF Clone

Product data:

Product Type: Expression Plasmids
Product Name: RBFOX2 (NM_001082576) Human Tagged ORF Clone
Tag: Myc-DDK
Symbol: RBFOX2
Synonyms: dj106l20.3; Fox-2; FOX2; fxb; HNRBP2; HRNBP2; RBM9; RTA
Mammalian Cell Selection: Neomycin
Vector: pCMV6-Entry (PS100001)
E. coli Selection: Kanamycin (25 ug/mL)
ORF Nucleotide Sequence: >RC217138 representing NM_001082576
Red=Cloning site Blue=ORF Green=Tags(s)

TTTTGTAATACGACTCACTATAGGGCGCCGGGAATTCGTCGACTGGATCCGGTACCGAGGAGATCTGCC
GCCCGGATCGCC

ATGGAGAAAAAGAAAATGGTAACTCAGGGTAACCAGGAGCCGACAACAACCTCTGACGCAATGGTTCAGC
 CTTTTACTACCATCCCATTTCCACCACCTCCGAGAAATGGAATCCCACAGAGTATGGGGTGCCACACAC
 TCAAGACTATGCCGGCCAGACCGGTGAGCATAACCTGACACTCTACGGAAGTACGCAAGCCACGGGGAG
 CAGAGCAGCAACTCACCCAGCACACAAAATGGATCTTACGACAGAAGGTGGAGCACAGACAGACGGCC
 AGCAGTCACAGACACAAAGTAGTAAAAATTCAGAGAGTAAATCTACCCCGAAACGGCTGCATGTCTCTAA
 TATTCCTTTCCGCTTCCGGGACCCTGACCTCCGGCAGATGTTGGGCAGTTTGGCAAAATCCTAGATGTA
 GAAATAATCTTTAATGAACGTGGCTCTAAGGGATTCGGGTTTCGTAACCTTCGAGAATAGTGTGATGCAG
 ACAGGGCCAGGGAGAAATTACACGGCACCCTGGTAGAGGGCCGTAATAATCGAGGTGAATAATGCTACAGC
 ACGTGTAAATGACCAATAAGAAGATGGTCACACCATATGCAAAATGGTTGGAAATTAAGCCAGTAGTTGGA
 GCTGTATATGGTCCGGAGTTATATGCAGCATCCAGCTTCAAGCAGATGTGTCCCTAGGCAATGATGCAG
 CAGTGCCCTATCAGGAAGAGGGGTATCAACACTTACATTCTTTAATCATTCTGGCTCCCTTACCC
 TACTGCAGCCACCACGGCAGCCGCTTTCAGAGGAGCCCATTTGAGGGCAGAGGGCGGACAGTATATGTT
 GCAGTCCGAGCGGTACCTCCAACAGCCATCCCCGCCTATCCAGGTGTGGTTTACCAGGACGGATTTACG
 GTGCTGACCTCTATGGTGGATATGCAGCCTACAGATATGCAGCCTGCTACTGCAACCCGAGCCACCCG
 TGCTGCAGCCGCTGCAGCCGCTTACAGTACGGTTATGGCAGGGTGTACAGCCGACCCCTACCATGCC
 CTTGCCCTGCCCTAGCTATGGAGTTGGCGCTGTGGCGAGTTTATACCGAGGTGGCTACAGCCGATTTG
 CCCCCTAC

ACGCGTACGCGGCCGCTCGAGCAGAACTCATCTCAGAAGAGGATCTGGCAGCAATGATATCCTGGATT
 ACAAGGATGACGACGATAAGGTTTAA



[View online >](#)

Protein Sequence: >RC217138 representing NM_001082576
Red=Cloning site Green=Tags(s)

MEKKKMVTQGNQEPTTTPDAMVQPFTTIPFPPPPQNGIPTYEGVPHTQDYAGQTGEHNL TLYGSTQAHGE
 QSSNSPSTQNGSLTTEGGAQTDGQSQSQSSSENSESKSTPKRLHVSNIPIFRFRDPLRQMFQFGKILDV
 EIIIFNERGSKGFGFVTFENSADADRAREKLHGTVVEGRKIEVNNATARVMTNKKMVTPTYANGWKLSPVVG
 AVYGPELYAASSFQADVSLGNDAAVPLSGRGGINTYIPLIIPGFPPYPTAATTAFAAFRGAHLRGRGRTVYG
 AVRVPPTAIPAYPGVVYQDGFYADLYGGYAAARYAQPATATAATAAAAAAAAAAYSDGYGRVYTADPYHA
 LAPAASYGVGAVASLYRGGYSRFAPY

TRTRPLEQKLISEEDLAANDILDYKDDDDKV

Chromatograms: https://cdn.origene.com/chromatograms/mk8055_g03.zip

Restriction Sites: SgfI-MluI

Cloning Scheme:



ACCN: NM_001082576

ORF Size: 1128 bp

OTI Disclaimer: The molecular sequence of this clone aligns with the gene accession number as a point of reference only. However, individual transcript sequences of the same gene can differ through naturally occurring variations (e.g. polymorphisms), each with its own valid existence. This clone is substantially in agreement with the reference, but a complete review of all prevailing variants is recommended prior to use. [More info](#)

OTI Annotation: This clone was engineered to express the complete ORF with an expression tag. Expression varies depending on the nature of the gene.

Components: The ORF clone is ion-exchange column purified and shipped in a 2D barcoded Matrix tube containing 10ug of transfection-ready, dried plasmid DNA (reconstitute with 100 ul of water).

Reconstitution Method:

1. Centrifuge at 5,000xg for 5min.
2. Carefully open the tube and add 100ul of sterile water to dissolve the DNA.
3. Close the tube and incubate for 10 minutes at room temperature.
4. Briefly vortex the tube and then do a quick spin (less than 5000xg) to concentrate the liquid at the bottom.
5. Store the suspended plasmid at -20°C. The DNA is stable for at least one year from date of shipping when stored at -20°C.

RefSeq: [NM_001082576.3](#)

RefSeq Size: 6985 bp

RefSeq ORF: 1131 bp

Locus ID: 23543

UniProt ID: [O43251](#)

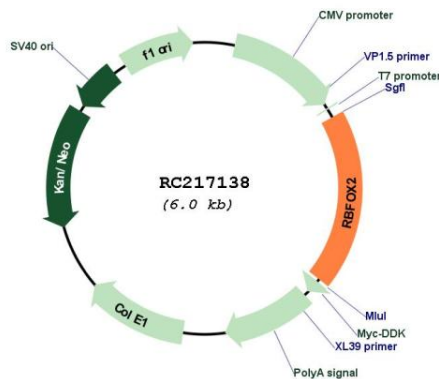
Cytogenetics: 22q12.3

Protein Families: Druggable Genome, Transcription Factors

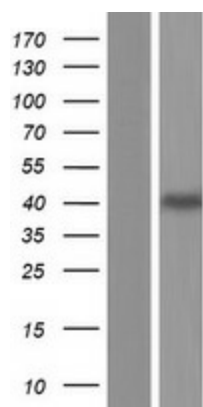
MW: 39.8 kDa

Gene Summary: This gene is one of several human genes similar to the *C. elegans* gene Fox-1. This gene encodes an RNA binding protein that is thought to be a key regulator of alternative exon splicing in the nervous system and other cell types. The protein binds to a conserved UGCAUG element found downstream of many alternatively spliced exons and promotes inclusion of the alternative exon in mature transcripts. The protein also interacts with the estrogen receptor 1 transcription factor and regulates estrogen receptor 1 transcriptional activity. Multiple transcript variants encoding different isoforms have been found for this gene. [provided by RefSeq, Jul 2008]

Product images:



Circular map for RC217138



Western blot validation of overexpression lysate (Cat# [LY421191]) using anti-DDK antibody (Cat# [TA50011-100]). Left: Cell lysates from untransfected HEK293T cells; Right: Cell lysates from HEK293T cells transfected with RC217138 using transfection reagent MegaTran 2.0 (Cat# [TT210002]).