

Product datasheet for **RC217130**

SLC2A11 (NM_001024938) Human Tagged ORF Clone

Product data:

Product Type:	Expression Plasmids
Product Name:	SLC2A11 (NM_001024938) Human Tagged ORF Clone
Tag:	Myc-DDK
Symbol:	SLC2A11
Synonyms:	GLUT10; GLUT11
Mammalian Cell Selection:	Neomycin
Vector:	pCMV6-Entry (PS100001)
E. coli Selection:	Kanamycin (25 ug/mL)



[View online »](#)

ORF Nucleotide Sequence:

>RC217130 ORF sequence
 Red=Cloning site Blue=ORF Green=Tags(s)

TTTTGTAATACGACTCACTATAGGGCGGCCGGAATTCGTCGACTGGATCCGGTACCGAGGAGATCTGCC
 GCC**GCGATCGCC**

ATGAGAGCGCTCCGAAGACTGATTACAGGGCAGGATCCTGCTCCTGACCATCTGCGCTGCCGGCATTGGTG
 GGACTTTTCAGTTTGGCTATAACCTCTCTATCATCAATGCCCGACCTTGACATTCAGGAATTCACCAA
 TGAGACATGGCAGGCGCTACTGGAGAGCCACTGCCCGATCACCTAGTCCTGCTTATGTGGTCCCTCATC
 GTGTCTCTGTATCCCCTGGGAGGCCTCTTTGGAGCACTGCTTGCAGGTCCCTTGGCCATCACGCTGGGAA
 GGAAGAAGTCCCTCCTGGTGAATAACATCTTTGTGGTGTGAGCAGCAATCCTGTTTGGATTACAGCCGAA
 AGCAGGCTCCTTTGAGATGATCATGCTGGGAAGACTGCTCGTGGGAGTCAATGCAGGTGTGAGCATGAAC
 ATCCAGCCATGTACCTGGGGAGAGCGCCCTAAGGAGCTCCGAGGAGCTGTGGCCATGAGCTCAGCCA
 TCTTTACGGCTCTGGGGATCGTATGGACAGGTGGTCCGACTCAGGGAGCTCCTAGGTGCCCTCAGGC
 CTGGCCCTGCTGCTGGCCAGCTGCCTGGTGGCGGGGCGCTCCAGCTCGCTCCCTGCCTGCTCCCT
 GAAAGCCCGCGCTACCTCCTATTGACTGTGGAGACACCGAGGCCTGCCTGGCAGCACTACGGCGGCTCC
 GGGGCTCCGGGGACTTGGCAGGGGAGCTGGAGGAGCTGGAGGAGGAGCGCGCTGCCTGCCAGGGCTGCCG
 TGCCCGCGGCCATGGGAGCTGTTCCAGCATCGGGCCCTGAGGAGACAGGTGACAAGCCTCGTGGTCTG
 GGCAGTGCCATGGAGCTCTGCGGGAATGACTCGGTGTACGCCTACGCCTCCTCCGTGTTCCGGAAGGCAG
 GAGTGCCGAAGCGAAGATCCAGTACCGCATCATCGGACTGGGAGTGCAGAGTCTCACGGCGGTTGT
 TAGTTGTGTGTAATCGAGAGGGTGGTTCGGCGGTGCTGCTCATCGGTGGGTACAGCCTGATGACCTGC
 TGGGGAGCATCTTCACTGTGCCCTGTGCCTGCAGAGCTCCTCCCCTGGACTCTACCTGGCCATGG
 CCTGCATCTTTGCCTTCACTCAGCTTTGGCATTGGCCCTGCCGGAGTGACGGGGATCCTGGCCAGAG
 GCTGTTTGGACAGATGGCCAGGCCTGCTGCCTGCATGGTCTGCGGGGCGCTCATGTGGATCATGCTCATC
 CTGGTTCGGCTGGGATTTCCCTTATCATGGAGGCCTGTCCCCTTCTCTATGTCCTTTCTTGGTG
 TCTGTGCTGTGGGGCCATCTACACTGGCCTGTTCCCTCCTGAGACCAAAGGCAAGACCTTCCAAGAGAT
 CTCCAAGGAATTACAGACTCAACTTCCCAGGCGGGCCAGGGCCCCACGTGGAGGAGCTGGAGGT
 ATCCAGTCAACAGAACTC

ACGCGTACGCGGCCGCTCGAGCAGAACTCATCTCAGAAGAGGATCTGGCAGCAAATGATATCCTGGATT
 ACAAGGATGACGACGATAAGGTTTAA

Protein Sequence:

>RC217130 protein sequence
 Red=Cloning site Green=Tags(s)

MRALRRLIQGRILLTICAAGIGTFQFGYNLSIINAPTLHIQEFNETWQARTGEPLPDHLVLLMWSLI
 VSLYPLGGLFGALLAGPLAITLGRKKSLLVNNIFVVSAAILFGFSRKAGSFEMIMLGRLLVGVNAGVSMN
 IQPMYLGEAPKELRGAVAMSSAIFTALGIVMGQVVGLRELLGGPQAWPLLLASCLVPGALQLASLPLLP
 ESPRYLLIDCGDTEACLAALRRLRSGDLAGELEEEERAACQGCRRRPWELFQHRALRRQVTSLVVL
 GSAMELCGNDVYAYASSVFRKAGVPEAKIQYAIIGTGSCCELLTAVVSCVVIERVGRRVLLIGGYSLMTC
 WGSIFTVALCLQSSFPWTLYLAMACIFAFILSFGIGPAGVTGILATELFDQMARPAACMVCALMWIMLI
 LVGLGFPFIMEALSHFLYVPFLGVCVCGAIYTGFLFPEKTKGTFQEI SKELHRLNFPRAAQGPTWRSLEV
 IQSTEL

TRTRPLEQKLISEEDLAANDILDYKDDDDKV

Chromatograms:

https://cdn.origene.com/chromatograms/mk6554_g03.zip

Restriction Sites:

Sgfl-Mlul

Cloning Scheme:



ACCN: NM_001024938

ORF Size: 1488 bp

OTI Disclaimer: Due to the inherent nature of this plasmid, standard methods to replicate additional amounts of DNA in E. coli are highly likely to result in mutations and/or rearrangements. Therefore, OriGene does not guarantee the capability to replicate this plasmid DNA. Additional amounts of DNA can be purchased from OriGene with batch-specific, full-sequence verification at a reduced cost. Please contact our customer care team at custsupport@origene.com or by calling 301.340.3188 option 3 for pricing and delivery.

The molecular sequence of this clone aligns with the gene accession number as a point of reference only. However, individual transcript sequences of the same gene can differ through naturally occurring variations (e.g. polymorphisms), each with its own valid existence. This clone is substantially in agreement with the reference, but a complete review of all prevailing variants is recommended prior to use. [More info](#)

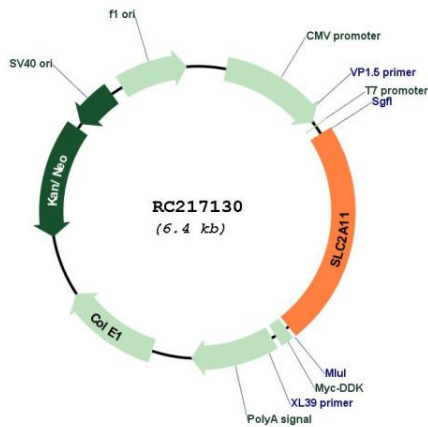
OTI Annotation: This clone was engineered to express the complete ORF with an expression tag. Expression varies depending on the nature of the gene.

Components: The ORF clone is ion-exchange column purified and shipped in a 2D barcoded Matrix tube containing 10ug of transfection-ready, dried plasmid DNA (reconstitute with 100 ul of water).

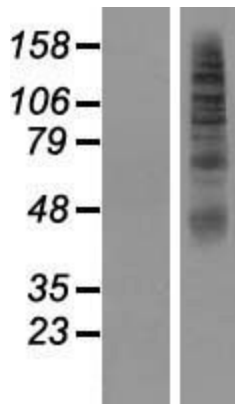
- Reconstitution Method:
1. Centrifuge at 5,000xg for 5min.
 2. Carefully open the tube and add 100ul of sterile water to dissolve the DNA.
 3. Close the tube and incubate for 10 minutes at room temperature.
 4. Briefly vortex the tube and then do a quick spin (less than 5000xg) to concentrate the liquid at the bottom.
 5. Store the suspended plasmid at -20°C. The DNA is stable for at least one year from date of shipping when stored at -20°C.

RefSeq: [NM_001024938.4](#)
 RefSeq Size: 3022 bp
 RefSeq ORF: 1491 bp
 Locus ID: 66035
 UniProt ID: [Q9BYW1](#)
 Cytogenetics: 22q11.23
 Protein Families: Transmembrane
 MW: 53.7 kDa
 Gene Summary: This gene belongs to a family of proteins that mediate the transport of sugars across the cell membrane. The encoded protein transports glucose and fructose. Alternative splicing results in multiple transcript variants. [provided by RefSeq, Sep 2013]

Product images:



Circular map for RC217130



Western blot validation of overexpression lysate (Cat# [LY422558]) using anti-DDK antibody (Cat# [TA50011-100]). Left: Cell lysates from untransfected HEK293T cells; Right: Cell lysates from HEK293T cells transfected with RC217130 using transfection reagent MegaTran 2.0 (Cat# [TT210002]).