

Product datasheet for **RC217118**

UCKL1 (NM_017859) Human Tagged ORF Clone

Product data:

Product Type:	Expression Plasmids
Product Name:	UCKL1 (NM_017859) Human Tagged ORF Clone
Tag:	Myc-DDK
Symbol:	UCKL1
Synonyms:	UCK1L; URKL1
Mammalian Cell Selection:	Neomycin
Vector:	pCMV6-Entry (PS100001)
E. coli Selection:	Kanamycin (25 ug/mL)



[View online »](#)

ORF Nucleotide Sequence:

>RC217118 representing NM_017859
 Red=Cloning site Blue=ORF Green=Tags(s)

TTTTGTAATACGACTCACTATAGGGCGGCCGGGAATTCGTCGACTGGATCCGGTACCGAGGAGATCTGCC
 GCCCGCATCGCC

ATGGCTGCGCCCCCGCCCGCGGACGCTGATCCTTCGCCACGTGCGCACCTACGGCCGAGACACAC
 CAGGCCGCGAGGCTGAGAAAAGCGAGACCGCTGCGAGGACCGCAATGCAGAGTCCCTGGACAGGCTCCT
 GCCACCTGTGGCACTGGGCGCTCTCCCGGAAGCGGACCACCAGCCAGTGAAGTCAGAGCCTCCCTG
 CTGCGTACAAGCAAGCGTACCATCTACACCGCCGGCGGCCCTGGTACAATGAACACGGCACGCAAT
 CCAAAGAGGCCTTCGCCATCGGCTTGGGAGGCGGAGTGCCTCTGGGAAGACCACTGTGGCCAGAATGAT
 CATCGAGGCCCTGGATGTGCCCTGGTGGTCTTGTCTGCCATGGACTCCTTCTACAAGGTGCTGACTGAG
 CAGCAGCAGGAACAGGCCGCACACAACAACCTTCAACTTCGACCACCCAGATGCCTTTGACTTCGACCTCA
 TCAATTCACCCCTCAAGAAGCTGAAGCAGGGGAAGAGTGTCAAGGTGCCATTTATGACTTCACCACGCA
 CAGCCGGAAGAAGGACTGAAAAACTGTATGGTGCAAACGTATCATCTTTGAGGGCATATGGCCTTT
 GCTGACAAGACACTGTTGGAGCTCCTGGACATGAAGATCTTTGTGGACACAGACTCCGACATCCGCCTGG
 TACGGCGGCTGCGCCGGGACATCAGTGAGCGCGGCCGGGACATCGAGGGTGTATCAAGCAGTACAACAA
 GTTTGTCAAGCCCTCCTTCGACCAGTACATCCAGCCACCATGCGCCTGGCAGACATCGTGGTCCCAGA
 GGGAGCGGCAACACGGTGGCCATCGACCTGATTGTGCAGCACGTGCACAGCCAGCTGGAGGAGCGTGAAC
 TCAGCGTCAGGGCTGCGCTGGCCCGGCACACCAGTGCCACCCGCTGCCCGGACGCTGAGCGTCTGAA
 GAGCAGCCCGCAGGTACGGGTCATGCACACCATCATCAGGGACAAGGAGACCAGTTCGCGACGAGTTCATC
 TTCTACTCCAAGAGACTGATGCGGCTGCTCATCGAGCACGCGCTCCTTCTGCCCTTTACGAGACTGCG
 TCGTACAGACCCCGCAGGGCAGGACTATGCGGGCAAGTGTCTATGCGGGGAAGCAGATCACCGGTGTGTC
 CATTCTGCGCGCCGGTGAAACCATGGAGCCCGCTGCGCGCTGTGTGCAAAGACGTGCGCATCGGCACC
 ATCCTCATCCAGACCAACCAGCTTACCGGGAGCCCGAGCTCCACTACCTGAGGCTGCCCAAGGACATCA
 GCGATGACCACGTGATCCTCATGGACTGCACCGTGTCCACGGGCGCGCGGCCATGATGGCAGTGCAGCT
 GCTCCTGGACCACGAGTGCCTGAGGACAAGATCTTTTTGCTGTCGCTGCTCATGGCAGAGATGGGCGTG
 CACTCAGTGGCCTATGCATTTCCGCGAGTGAGAATCATCACCGCGGTGGACAAGCGGGTCAATGACC
 TTTTCCGCATCATCCAGGCATTGGGAACCTTTGGCGACCGCTACTTTGGGACAGACGCGGTCCCGATGG
 CAGTGACGAGGAGGAAGTGGCTACACGGGT

ACGCGTACGCGGCCGCTCGAGCAGAAACTCATCTCAGAAGAGGATCTGGCAGCAAATGATATCCTGGATT
 ACAAGGATGACGACGATAAGGTTTAA

Protein Sequence:

>RC217118 representing NM_017859
 Red=Cloning site Green=Tags(s)

MAAPPARADADPSPTSPPTARDTPGRQAEKSETACEDRNAESLDRLLPPVGTGRSPRKRRTTSQCKSEPL
 LRTRSKRTIYTAGRPPWYNEHGTQSKEAFAIGLGGGSASGKTTVARMIEALDVPWVLLSMDSFYKVLTE
 QQEQEAHNNFNFDHPDAFDFDLIISTLKKLKQKSVKVIYDFTTSHRKKDWKTLYGANVIFEGIMAF
 ADKTLLELLDMKIFVDTDSIRLVRRLRRDISERGRDIEGVIKQYNKFKVPSFDQYIQTMLRADIVVPR
 GSGNTVAIDLIVQHVHSQLERELSVRAALASAHQCHPLPRTLVLKSTPQVRGMHTIIRDKETSDEFI
 FYSKRLMRLLEHALSFLPFQDCVVQTPQGQDYAGKCYAGKQITGVSILRAGETMEPALRAVCKDVRIGT
 ILIQTNQLTGEPELHYLRPKDISDDHILMDCTVSTGAAAMMAVRVLLDHDVPEDKIFLLSLLMAEMGV
 HSYAYAFPRVRIITTAVDKRVNDLFRIIPGIGNFGDRYFGTDAVPDGSDEEEVAYTG

TRTRPLEQKLISEEDLAANDILDYKDDDDKV

Chromatograms:

https://cdn.origene.com/chromatograms/mk6484_c04.zip

Restriction Sites:

SgfI-MluI

Cloning Scheme:

ACCN: NM_017859

ORF Size: 1103 bp

OTI Disclaimer: The molecular sequence of this clone aligns with the gene accession number as a point of reference only. However, individual transcript sequences of the same gene can differ through naturally occurring variations (e.g. polymorphisms), each with its own valid existence. This clone is substantially in agreement with the reference, but a complete review of all prevailing variants is recommended prior to use. [More info](#)

OTI Annotation: This clone was engineered to express the complete ORF with an expression tag. Expression varies depending on the nature of the gene.

Components: The ORF clone is ion-exchange column purified and shipped in a 2D barcoded Matrix tube containing 10ug of transfection-ready, dried plasmid DNA (reconstitute with 100 ul of water).

Reconstitution Method:

1. Centrifuge at 5,000xg for 5min.
2. Carefully open the tube and add 100ul of sterile water to dissolve the DNA.
3. Close the tube and incubate for 10 minutes at room temperature.
4. Briefly vortex the tube and then do a quick spin (less than 5000xg) to concentrate the liquid at the bottom.
5. Store the suspended plasmid at -20°C. The DNA is stable for at least one year from date of shipping when stored at -20°C.

RefSeq: [NM_017859.4](#)
RefSeq Size: 1833 bp

RefSeq ORF: 1647 bp

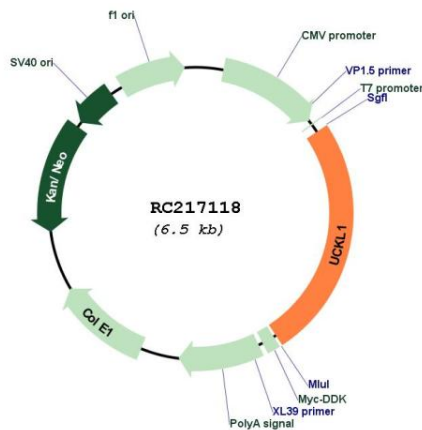
Locus ID: 54963

UniProt ID: [Q9NWZ5](#)

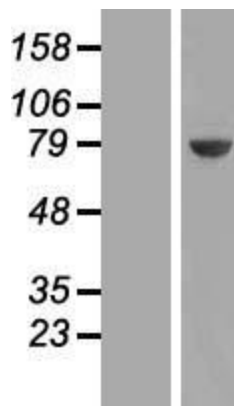
Cytogenetics: 20q13.33
Domains: PRK
Protein Families: Druggable Genome
Protein Pathways: Drug metabolism - other enzymes, Metabolic pathways, Pyrimidine metabolism
MW: 61 kDa

Gene Summary: The protein encoded by this gene is a uridine kinase. Uridine kinases catalyze the phosphorylation of uridine to uridine monophosphate. This protein has been shown to bind to Epstein-Barr nuclear antigen 3 as well as natural killer lytic-associated molecule. Ubiquitination of this protein is enhanced by the presence of natural killer lytic-associated molecule. In addition, protein levels decrease in the presence of natural killer lytic-associated molecule, suggesting that association with natural killer lytic-associated molecule results in ubiquitination and subsequent degradation of this protein. Alternative splicing results in multiple transcript variants. [provided by RefSeq, Nov 2014]

Product images:



Circular map for RC217118



Western blot validation of overexpression lysate (Cat# [LY413319]) using anti-DDK antibody (Cat# [TA50011-100]). Left: Cell lysates from untransfected HEK293T cells; Right: Cell lysates from HEK293T cells transfected with RC217118 using transfection reagent MegaTran 2.0 (Cat# [TT210002]).