

Product datasheet for **RC217117**

GMEB1 (NM_006582) Human Tagged ORF Clone

Product data:

Product Type:	Expression Plasmids
Product Name:	GMEB1 (NM_006582) Human Tagged ORF Clone
Tag:	Myc-DDK
Symbol:	GMEB1
Synonyms:	P96PIF; PIF96
Mammalian Cell Selection:	Neomycin
Vector:	pCMV6-Entry (PS100001)
E. coli Selection:	Kanamycin (25 ug/mL)



[View online »](#)

ORF Nucleotide
Sequence:

>RC217117 representing NM_006582
Red=Cloning site Blue=ORF Green=Tags(s)

TTTTGTAATACGACTCACTATAGGGCGGCCGGAATTCGTCGACTGGATCCGGTACCGAGGAGATCTGCC
GCCGCGATCGCC

ATGGCTAATGCAGAAGTGAAGTGTCCAGTGGGGATGTGGTTGTGGTACCTACTGAAGAAATGAAGGGG
AGAATCCTGAAGACACTAAAACCAAGTATTTGTCAGTTACAGCCTGTGCAACAAGTTTGTATCGA
TGGACACTTTTACAACAGGATTTATGAAGCTGGGTCGGAGAACAACACGGCAGTTGTAGCAGTAGAACT
CACACGATACACAAAATTGAAGAAGGGATTGATACAGGCACTATAGAAGCAAATGAGGATATGGAATTG
CTTACCCATAACTTGTGGGGAGAGCAAAGCCATCCTCCTCTGGAAGAAGTTGTATGTCCAGGAATAAA
CGTGAAGTGTCAAGTTCATGATCAGTTGATCAGCCCCAAGCACTTTGTTTCATCTGGCTGGCAAGTCC
ACTCTGAAGGACTGGAAGAGAGCTATTCGTCCTGGGTGGGATCATGCTCAGGAAAATGATGGACTCCGGAC
AGATTGATTTTACCAACATGACAAAGTTTGTCTCAATACCTGCAGAAGCACCAAATTTGATCTTCTGAT
CAGCAGTGAAGAGCTCCAGTGCAGGACAGCAGACAAGTGTGGTGCAGACACCCACTTCGGCTGATGGT
AGCATCACGCAGATTGCCATCTCAGAAGAGAGCATGGAAGAGGCAGGGCTGGAATGGAACCTCAGCTCTCA
CCGCTGCTGTACCATGGCCACGGAGGAGGGTGTAAAGAAAGACTCAGAGGAAATTTAGAGGACACTTT
GATGTTCTGGAAGGAATAGCTGATGTAGGGCTGATGGAAGAGGTTGTCTGCAATATACAGAAGGAATA
GAGGAGCTACTCAGGGGAGTTCAGCAGCGGCTCATCCAGGCTCCCTTCCAAGTACAGATGCTGTGTTT
TCAACAATGTAGCACACACATTTGGCCTAATGGACACAGTCAAGAAGGTTTTAGACAACAGAAGGAACCA
AGTAGAGCAGGGAGAAGAACAGTTTCTCTATACTCTGACAGACTTGAACGCCAGTTGGAGGAGCAGAAG
AAGCAAGGCCAGGATCACAGGCTGAAATCTCAGACAGTTCAAAATGTGGTACTGATGCCTGTGAGCACTC
CTAAGCCTCAAAAAGGCCCGGCTCCAGCGGCCAGCCTCCACCACTGTCTTGAGCCCTCTCCTCTGT
CCAGCAGCTCAGTTCACAGTCATCTCACCATCACCATCACCACCCAGTGGGTCAAGTCAATTTCCATGGGC
AATATTCCAGTGGCCACCCTCAGCCAGGCTCCAGTCTGTGACTGTCCACACACTGCCTTCTGGCCCTC
AGCTCTTCCGCTATGCCACAGTGGTCTCCTCTGCCAAGAGCAGCTCACCAGACACAGTGACCATCCACCC
TTCATCTAGCTTGGCGTGTGAGCTCTACTGCCATGCAGGATGGGAGTACACTGGGCAACATGACCACC
ATGTTAGCCCTGTGGAATTGGTGGCCATGGAGTCCGGCCTAACCTCGGCAATTCAGGCTGTTGAAAGCA
CCTCAGAGGATGGGCAGACCATCATTGAGATTGATCCAGCCCCGACCCAGAAGCTGAAGATACTGAGGG
CAAAGCAGTCATCTTGGAGACAGAGCTGAGGACTGAGGAGAAAGTTGTGGCTGAGATGGAAGAACCACG
CATCAAGTTCACAATGTGGAGATTGTGGTCTTAGAGGAT

ACGCGTACGCGGCCGCTCGAGCAGAACTCATCTCAGAAGAGGATCTGGCAGCAAATGATATCCTGGATT
ACAAGGATGACGACGATAAGGTTTAA

Protein Sequence:

>RC217117 representing NM_006582
Red=Cloning site Green=Tags(s)

MANAEVSVPGDVVVVPTTEGENENPEDTKTQVILQLQPVQQGLFIDGHFYNRIYEAGSENNTAVVAVET
HTIHKIEEGIDTGTIEANEDMEIAYPITCGESKAILLWKKFVCPGINVKCVKFNQQLISPKHFVHLGKS
TLKDWKRAIRLGGIMLRKMMDSGQIDFYQHDKVCSNTRSTKFDLLISSARAPVPGQQTSTVQPTPSADG
SITQIAISEESMEEAGLEWNSALTAAVTMATEEGVKKDSEESI SEDTLMFWKGIADVGLMEEVVCNIQKEI
EELLRGVQQRLIQAPFQVTDAAVLNNVAHTFGLMDTVKKVLDNRRNQVEQGEEQFLYTLTDLERQLEEQK
KQGQDHRKLSQTVQNVVLMVSTPKPPKRPRLRPASTTVLSPSPVQPPQFTVISPITITPVGQSF SMG
NIPVATLSQGSSPVTVHTLPSGPQLFRYATVVSASSSSPDVTIHPSSSLALLSSTAMQDGLGNMTT
MVSPVELVAMESGLTSAIQAVESTSEDGQTIIEIDPAPDPEAEDTEGKAVILETELRTTEEKVVAEMEEHQ
HQVHNVEIVVLED

TRTRPLEQKLISEEDLAANDILDYKDDDDKV

Chromatograms:

https://cdn.origene.com/chromatograms/mk6483_h02.zip

Restriction Sites:

Sgfl-Mlul

Cloning Scheme:


ACCN: NM_006582

ORF Size: 1719 bp

OTI Disclaimer: The molecular sequence of this clone aligns with the gene accession number as a point of reference only. However, individual transcript sequences of the same gene can differ through naturally occurring variations (e.g. polymorphisms), each with its own valid existence. This clone is substantially in agreement with the reference, but a complete review of all prevailing variants is recommended prior to use. [More info](#)

OTI Annotation: This clone was engineered to express the complete ORF with an expression tag. Expression varies depending on the nature of the gene.

Components: The ORF clone is ion-exchange column purified and shipped in a 2D barcoded Matrix tube containing 10ug of transfection-ready, dried plasmid DNA (reconstitute with 100 ul of water).

- Reconstitution Method:**
1. Centrifuge at 5,000xg for 5min.
 2. Carefully open the tube and add 100ul of sterile water to dissolve the DNA.
 3. Close the tube and incubate for 10 minutes at room temperature.
 4. Briefly vortex the tube and then do a quick spin (less than 5000xg) to concentrate the liquid at the bottom.
 5. Store the suspended plasmid at -20°C. The DNA is stable for at least one year from date of shipping when stored at -20°C.

RefSeq: [NM_006582.4](#)

RefSeq Size: 1960 bp

RefSeq ORF: 1722 bp

Locus ID: 10691

UniProt ID: [Q9Y692](#)

Cytogenetics: 1p35.3

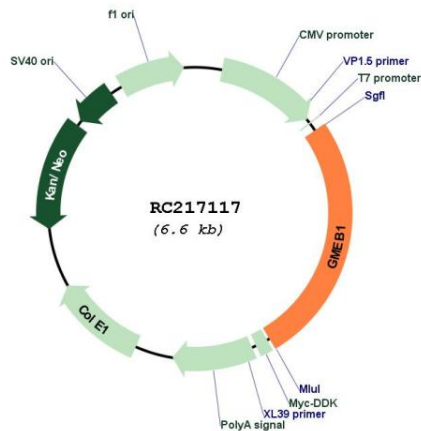
Domains: SAND

Protein Families: Druggable Genome, Transcription Factors

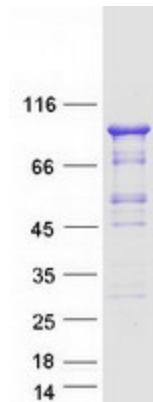
MW: 62.4 kDa

Gene Summary: This gene encodes a member of KDWK gene family which associates with GMEB2 protein. The GMEB1-GMEB2 complex is essential for parvovirus DNA replication. Studies in rat for a similar gene suggest that this gene's role is to modulate the transactivation of the glucocorticoid receptor when it is bound to glucocorticoid response elements. Three alternative spliced transcript variants encoding different isoforms exist. [provided by RefSeq, Feb 2016]

Product images:



Circular map for RC217117



Coomassie blue staining of purified GMEB1 protein (Cat# [TP317117]). The protein was produced from HEK293T cells transfected with GMEB1 cDNA clone (Cat# RC217117) using MegaTran 2.0 (Cat# [TT210002]).