

## Product datasheet for **RC217113**

### Cadherin 7 (CDH7) (NM\_033646) Human Tagged ORF Clone

#### Product data:

Product Type:	Expression Plasmids
Product Name:	Cadherin 7 (CDH7) (NM_033646) Human Tagged ORF Clone
Tag:	Myc-DDK
Symbol:	Cadherin 7
Synonyms:	CDH7L1
Mammalian Cell Selection:	Neomycin
Vector:	pCMV6-Entry (PS100001)
E. coli Selection:	Kanamycin (25 ug/mL)



[View online »](#)

**ORF Nucleotide  
Sequence:**

>RC217113 representing NM\_033646  
 Red=Cloning site Blue=ORF Green=Tags(s)

TTTTGTAATACGACTCACTATAGGGCGGCCGGGAATTCGTCGACTGGATCCGGTACCGAGGAGATCTGCC  
 GCC**CGGATCGCC**

ATGAAGTTGGCCAAAGTGGAGTTCTGCCATTTTCTGCAGCTAATAGCTCTTTTCTGTGTTTTCTGGGA  
 TGAGTCAAGCAGAACTCTCAAGGTCAGATCAAAGCCCTATTTCCAATCAGGGAGGTCCCGACCAAGCG  
 CAGCTGGGTGTGGAATCAGTTCTTTGTGCTGGAGGAATACATGGGTTCCAGACCCCTCTATGTAGGAAAG  
 CTTCACTCTGATGTTGATAAAGGAGATGGTTCCATCAAATACATCTTGTGAGGCGAAGGGCAAGTTCCA  
 TTTTCATTATTGATGAGAACACTGGGGATTTCCATGCCACCAAGAGACTGGATCGTGAGGAGCAGGCCTA  
 CTACACGCTCCGAGCTCAAGCGCTGGATAGGCTCACCAACAAACCCGTGGAGCCCGAGTCGGAGTTTGTG  
 ATCAAATTCAGGATATCAACGACAATGAACCCAAATTTTGGATGGCCCATACACGGCAGGAGTCCCG  
 AAATGTCTCCCGTGGGACCTCAGTGGTACAAGTGACAGCGACGGATGCTGATGATCCTACATATGGCAA  
 CAGTGCCAGAGTGGTCTACAGTATTCTGCAAGGACAGCCGTAATCTCAGTGGAGCCAAAGACAGGAGTC  
 ATCAAGACTGCCCTTCCAACATGGATAGAGAGGCTAAAGACCAGTATTTGCTTGTCAATTAGGCAAAGG  
 ATATGGTTGGTCAAAATGGAGGACTGTCAGGAACACTACATCAGTCACTGTGACCCTAACTGATGTCAACGA  
 TAATCCACCTCGCTTTCCCTCGAAGGCTTATCAATATAACGTCCCAGAGTCATTACCTGTAGCCTCAGTT  
 GTGGCCAGAATTAAGCTGCTGATGCAGATATTGGAGCTAATGCTGAAATGGAGTACAAGATTGTGGATG  
 GTGATGGTTTGGGCATTTTTAAGATTTCTGTTGACAAAGAAACCCAGGAAGGAATCATTACTATACAGAA  
 GGAGCTGGATTTGAAGCCAAAACAAGTTACACGCTACGGATAGAAGCTGCAATAAAGATGCCGACCCCT  
 CGCTTTCTGAGCTTGGTCCGTTCCAGTACACGACAACGTGAAGATAATTGTGGAAGATGTAGATGAGC  
 CCCCTGTGTTCTCTTACCCTTGTACCCTATGGAGGTGTCGGAAGCTACCCAGGTTGGGAATCATTGG  
 CACTGTAGCAGCTCATGACCCAGATTTCTCCAATAGCCCTGTGAGGTAATCAATTGACAGAAACACAGAC  
 TTGGAGAGATACTTCAATATTGATGCCAACAGTGGGGTCAACAACTGCCAAGTCTTTGGATCGAGAGA  
 CAAATGCTATTACAATATCACAGTCTTGCAATGGAGAGCCAGAATCCATCTCAAGTAGGAAGAGGCTA  
 TGTGGCCATCACTATACTTGACATCAATGATAACGCCCTGAATTTGCCATGGACTATGAGACCACCGTC  
 TGTGAAAATGCCAGCCGGGCGAGGTTATCCAGAAAATCAGTGTGGATAAAGATGAGCCATCCAATG  
 GACACCAGTTTTACTTCAGCTTAAACAACGGATGCAACAAATAACCACAACTTTTTCATTGAAAGATAACAA  
 AGACAACACAGCCTCAATACTGACCAGGAGAAACGGCTTCCGGAGACAGGAACAATCAGTTTACTATCTG  
 CCAATTTTCATTGTGGACAGTGGATCTCCCTCACTTAGCAGCACCAACACCCTCACCATCCGCGTGTGTG  
 ACTGTGATGCTGACGGCGTAGCCAGACCTGCAATGCAGAGGCCTATGTCCTACCTGCTGGCCTCAGTAC  
 AGGAGCCCTGATAGCCATACTCGCTGTGCTTTGACATTATTGGTGTGATCCTCCTTATCGTCACTATG  
 AGAAGACGGAAAAAGAGCCCTTATTTTTGACGAAGAAAGAGACATCAGAGAAAATATTGTGAGATACG  
 ATGACGAGGGCGGGGAGAGGAGGACACGGAAGCGTTTGACATGGCTGCACTGAGAAACCTCAACGTCAT  
 CCGAGACACCAAGACCCGGAGGGATGTGACTCCAGAAATCAATTCCTGAGTCGACCAGCTTTTAAAGC  
 ATCCCAGATAATGTCATCTTTAGGGAATTTATTTGGGAAAGATTTAAAGAAAGCCGATGTTGATCCTGGTG  
 CTCCTCCTTATGACTCCCTGCAGACATATGCTTTGAAGGAAATGGCTCAGTTGCTGAATCACTCAGCTC  
 TTTAGATTCCATCAGCTCAAACCTGATCAGAACTATGACTACCTAAGTGACTGGGACCTCGCTTTAA  
 CGACTCGCGGACATGTATGGGACTGGCCAAGAGAGTTTGTACTCA

**ACGCGT**ACGCGGCCGCTCGAGCAGAAACTCATCTCAGAAGAGGATCTGGCAGCAAATGATATCCTGGATT  
 ACAAGGATGACGACGATAAGGTTTAA

**Protein Sequence:** >RC217113 representing NM\_033646  
Red=Cloning site Green=Tags(s)

MKLGKVEFCHFLQLIALFLCFSGMSQAELSRSRSKPYFQSGRSRTKRSWVWNQFFVLEEYMGSDPLYVVGK  
LHSDVDKGDGSIKYILSGEGASSIFIIDENTGDIHATKRLDREEQAYYTLRAQALDRLTNKPVEPESEFV  
IKIQDINDNEPKFLDGPYTAGVPEMSPVGTSSVQVTATDADDPTYGNSARVVYSILQGQPYFSVEPKTG  
IKTALPNMDREAKDQYLLVIQAKDMVGQNGGLSGTTSVTVTLDVNDNPPRFPRRSYQYVNPESLPVASV  
VARIKAADADIGANAEMEYKIVDGDGLGIFKISVDKETQEGIITIQKELDFEAKTSYTLRIEAANKDADP  
RFLSLGPFSDTTTVKIIVEDVDEPPVFSPLYPMEVSEATQVGNIIIGTVAHDPDSSNSPVRYSIDRNTD  
LERYFNIDANSGVITTAKSLDRETNAIHNITVLAMESQNPSQVGRGYVAITILDINDNAPEFAMDYETTV  
CENAQPGQVIQKISAVDKDEPSNGHQFYFSLTTDATNNHNFSLKDNKDNTASILTRRNGFRRQEQSYYL  
PIFIVDSGSPSLSSTNTLTIRVCDADGVAQTCNAEAYVLPAGLSTGALIAILACVLTLLVILLIVTM  
RRRKKEPLIFDEERDIRENIVRYDDEGGGEEDTEAFDMAALRNLNVIRDTKTRRDVTPEIQFLSRPAFKS  
IPDNVIFREFIWERLKEADVDPGAPPYDSLQTYAFEGNGSVAESLSSLDSSNSDQNYDYLSDWGPRFK  
RLADMYGTGQESLYS

TRTRPLEQKLI SEEDLAANDILDYKDDDDKV

**Chromatograms:** [https://cdn.origene.com/chromatograms/mk6163\\_b03.zip](https://cdn.origene.com/chromatograms/mk6163_b03.zip)

**Restriction Sites:** Sgfl-Mlul

Cloning Scheme:



ACCN: NM\_033646

ORF Size: 2355 bp

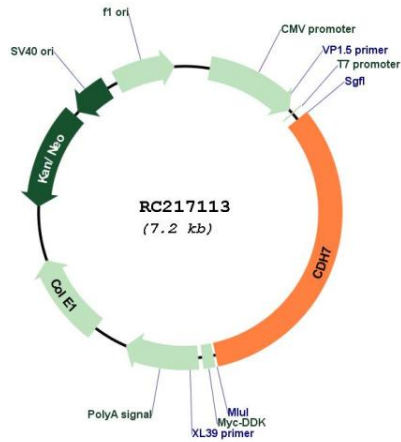
OTI Disclaimer: The molecular sequence of this clone aligns with the gene accession number as a point of reference only. However, individual transcript sequences of the same gene can differ through naturally occurring variations (e.g. polymorphisms), each with its own valid existence. This clone is substantially in agreement with the reference, but a complete review of all prevailing variants is recommended prior to use. [More info](#)

OTI Annotation: This clone was engineered to express the complete ORF with an expression tag. Expression varies depending on the nature of the gene.

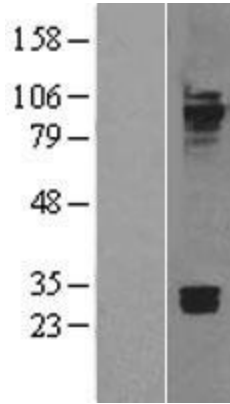
Components: The ORF clone is ion-exchange column purified and shipped in a 2D barcoded Matrix tube containing 10ug of transfection-ready, dried plasmid DNA (reconstitute with 100 ul of water).

<b>Reconstitution Method:</b>	<ol style="list-style-type: none"><li>1. Centrifuge at 5,000xg for 5min.</li><li>2. Carefully open the tube and add 100ul of sterile water to dissolve the DNA.</li><li>3. Close the tube and incubate for 10 minutes at room temperature.</li><li>4. Briefly vortex the tube and then do a quick spin (less than 5000xg) to concentrate the liquid at the bottom.</li><li>5. Store the suspended plasmid at -20°C. The DNA is stable for at least one year from date of shipping when stored at -20°C.</li></ol>
<b>RefSeq:</b>	<a href="#">NM_033646.3</a>
<b>RefSeq Size:</b>	2728 bp
<b>RefSeq ORF:</b>	2358 bp
<b>Locus ID:</b>	1005
<b>UniProt ID:</b>	<a href="#">Q9ULB5</a>
<b>Cytogenetics:</b>	18q22.1
<b>Protein Families:</b>	Transmembrane
<b>MW:</b>	84 kDa
<b>Gene Summary:</b>	<p>This gene encodes a type II classical cadherin of the cadherin superfamily. Alternative splicing results in multiple transcript variants, at least one of which encodes a preproprotein that is proteolytically processed to generate the mature glycoprotein. This calcium dependent cell-cell adhesion molecule is comprised of five extracellular cadherin repeats, a transmembrane region and a highly conserved cytoplasmic tail. Type II (atypical) cadherins are defined based on their lack of a histidine-alanine-valine (HAV) cell adhesion recognition sequence specific to type I cadherins. Cadherins mediate cell-cell binding in a homophilic manner, contributing to the sorting of heterogeneous cell types. Mutations in this gene may be associated with bipolar disease in human patients. This gene is present in a gene cluster on chromosome 18. [provided by RefSeq, May 2016]</p>

Product images:



Circular map for RC217113



Western blot validation of overexpression lysate (Cat# [LY401390]) using anti-DDK antibody (Cat# [TA50011-100]). Left: Cell lysates from untransfected HEK293T cells; Right: Cell lysates from HEK293T cells transfected with [RC217116] using transfection reagent MegaTran 2.0 (Cat# [TT210002]).