

Product datasheet for RC217106

ELOF1 (NM_032377) Human Tagged ORF Clone

Product data:

Product Type: Expression Plasmids
Product Name: ELOF1 (NM_032377) Human Tagged ORF Clone
Tag: Myc-DDK
Symbol: ELOF1
Synonyms: ELF1
Mammalian Cell Selection: Neomycin
Vector: pCMV6-Entry (PS100001)
E. coli Selection: Kanamycin (25 ug/mL)
ORF Nucleotide Sequence: >RC217106 representing NM_032377
Red=Cloning site Blue=ORF Green=Tags(s)

TTTTGTAATACGACTCACTATAGGGCGGCCGGAATTCGTCGACTGGATCCGGTACCGAGGAGATCTGCC
GCC**CGATCGCC**

ATGGGGCGCAGAAAGTCAAACGAAAGCCGCTCCCAAGAAGAAGATGACAGGCACCCTCGAGACCCAGT
TCACCTGCCCTTCTGCAACCACGAGAAATCCTGTGATGTGAAAATGGACCGTCCCGCAACACCGGAGT
CATCTTGTACCGTGTGCCTAGAGGAATCCAGACGCCATAACGTATCTGTGAGAACCGTGGATGTG
TACAGTGATTGGATAGACGCCTGCGAGGCGCCAATCAG

ACGCGTACGCGGCCGCTCGAGCAGAAACTCATCTCAGAAGAGGATCTGGCAGCAAATGATATCCTGGATT
ACAAGGATGACGACGATAAGGTTTAA

Protein Sequence: >RC217106 representing NM_032377
Red=Cloning site Green=Tags(s)
MGRRKS~~SRKPPPKK~~MTGTLETQFTCPFCNHEKSCDVKMDRARNTGVISCTVCL~~EEFQTP~~ITYLSEPV~~DV~~
YSDWIDACEAANQ

TRTRPLEQKLISEEDLAANDILDYKDDDDKV

Chromatograms: https://cdn.origene.com/chromatograms/mk6480_d07.zip

Restriction Sites: Sgfl-MluI



[View online »](#)

Cloning Scheme:


ACCN: NM_032377

ORF Size: 249 bp

OTI Disclaimer: The molecular sequence of this clone aligns with the gene accession number as a point of reference only. However, individual transcript sequences of the same gene can differ through naturally occurring variations (e.g. polymorphisms), each with its own valid existence. This clone is substantially in agreement with the reference, but a complete review of all prevailing variants is recommended prior to use. [More info](#)

OTI Annotation: This clone was engineered to express the complete ORF with an expression tag. Expression varies depending on the nature of the gene.

Components: The ORF clone is ion-exchange column purified and shipped in a 2D barcoded Matrix tube containing 10ug of transfection-ready, dried plasmid DNA (reconstitute with 100 ul of water).

Reconstitution Method:

1. Centrifuge at 5,000xg for 5min.
2. Carefully open the tube and add 100ul of sterile water to dissolve the DNA.
3. Close the tube and incubate for 10 minutes at room temperature.
4. Briefly vortex the tube and then do a quick spin (less than 5000xg) to concentrate the liquid at the bottom.
5. Store the suspended plasmid at -20°C. The DNA is stable for at least one year from date of shipping when stored at -20°C.

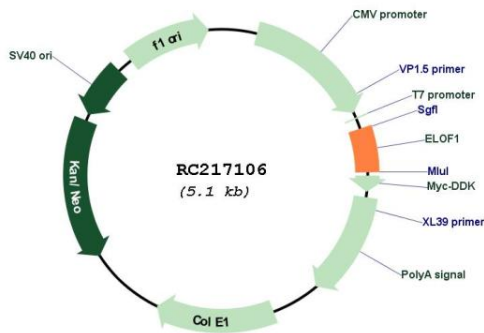
RefSeq: [NM_032377.3](#)

RefSeq Size: 982 bp

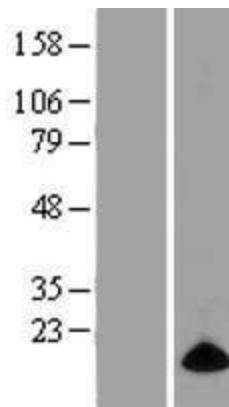
RefSeq ORF: 252 bp

Locus ID: 84337

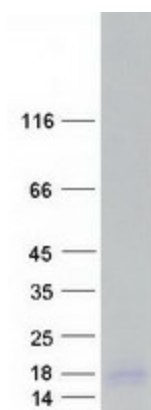
UniProt ID: [P60002](#)
Cytogenetics: 19p13.2
Domains: DUF701
MW: 9.3 kDa
Gene Summary: Transcription elongation factor implicated in the maintenance of proper chromatin structure in actively transcribed regions.[UniProtKB/Swiss-Prot Function]

Product images:


Circular map for RC217106



Western blot validation of overexpression lysate (Cat# [LY410170]) using anti-DDK antibody (Cat# [TA50011-100]). Left: Cell lysates from untransfected HEK293T cells; Right: Cell lysates from HEK293T cells transfected with RC217106 using transfection reagent MegaTran 2.0 (Cat# [TT210002]).



Coomassie blue staining of purified ELOF1 protein (Cat# [TP317106]). The protein was produced from HEK293T cells transfected with ELOF1 cDNA clone (Cat# RC217106) using MegaTran 2.0 (Cat# [TT210002]).