

Product datasheet for **RC217089**

SDCCAG8 (NM_006642) Human Tagged ORF Clone

Product data:

Product Type:	Expression Plasmids
Product Name:	SDCCAG8 (NM_006642) Human Tagged ORF Clone
Tag:	Myc-DDK
Symbol:	SDCCAG8
Synonyms:	BBS16; CCCAP; CCCAP SLSN7; hCCCAP; HSPC085; NPHP10; NY-CO-8; SLSN7
Mammalian Cell Selection:	Neomycin
Vector:	pCMV6-Entry (PS100001)
E. coli Selection:	Kanamycin (25 ug/mL)



[View online »](#)

ORF Nucleotide
Sequence:

>RC217089 representing NM_006642
Red=Cloning site Blue=ORF Green=Tags(s)

TTTTGTAATACGACTCACTATAGGGCGGCCGGAATTCGTCGACTGGATCCGGTACCGAGGAGATCTGCC
GCCGCGATCGCC

ATGGCGAAGTCCCCGAGAAGTCTACCCTGGAGGAGATTCTGGGGCAGTATCAACGGAGTCTCCGGGAAC
ATGCCAGCAGAAGCATTACCAACTGACATGTGCCCTGAAAGAAGGCGATGTCACATTGGAGAAGATGC
ACCAAATCTTTCTTTTAGCACCAGTGTGGGAAATGAGGACGCCAGGACAGCCTGGCCGAATTACAACAG
AGCCATGCTGTTAATCAGCTCAAAGATTTGTTGCGCCAACAAGCAGATAAGGAAAGTGAAGTATCTCCGT
CAAGAAGAAGAAAAATGTCCCTTGAGGTCATTAGAACATGAGGAAACCAATATGCCTACTATGCACGA
CCTTGTTCATACTATTAATGACCAGTCTCAATATATTCATCATTTAGAGGCAGAAGTTAAGTTCTGCAAG
GAGGAAGTCTCTGGAATGAAAAATAAATAACAAGTAGTTGTGCTTGAAAACGAAGGGCTCCAGCAACAGC
TAAATCTCAAAGACAAGAGGAGACTGAGGGAACAACACTTCTGGATGCATCCGAAACATGCACAA
TTCTTGATTACAACAGGTGAAGATTCTGGGGTGGCGAAACCTCCAAAAGACCATTTTCCCATGACAAT
GCAGATTTTGGCAAAGCTGCATCTGCTGGTGAGCAGCTAGAAGTGGAGAAGCTAAAACCTACTTATGAGG
AAAAGTGTGAAATTGAGGAATCCCAATTGAAGTTTTTGGGAACGACTTAGCTGAATATCAGAGAAGTTG
TGAAGTCTTAAAGAGCAACTAAAGCATAAAGAATTTCTTCTGGCTGCTAATACTTGAACCGTGTGGT
GGTCTTTGTTTGAATGTGCTCAGCATGAAGCTGTTCTTTCCCAAACCCATACTAATGTTTCAATATGCAGA
CCATCGAAAGACTGGTTAAAGAAAGAGATGACTTGATGTCTGACTAGTTTCCGTAAAGGAGCAGCTTGGC
AGATACGCAGCAAAGAGAAGCAAGTGTATGAACAGGTGAAACAAGTTTTGCAATATCTGAGGAAGCC
AATTTTGA AAAAACAAGGCTTTAATCCAGTGTGACCAGTTGAGGAAGGAGCTGGAGAGGCAGGCGGAGC
GACTTGAAAAAGAACTTGCATCTCAGCAAGAGAAAAGGCCATTGAGAAAAGACATGATGAAAAAGGAAAT
AACGAAAAGAAAAGGAGTACATGGGATCAAAGATGTTGATCTTGTCTCAGAATATTGCCAACTGGAGGCC
CAGGTGGA AAAAGTTACAAGGAAAAGATTTTCACTATTAATCAACTGGAGGAAATTCAAAAGCCAGCTGG
CTTCTCGGAAAATGGATGTCACAAAGGTGTGTGGAGAAAATGCGCTATCAGCTGAATAAAACCAACATGGA
GAAGGATGAGGCAGAAAAGGAGCACAGAGAGTTTCAAGCAAAAACCTAACAGGGATCTTGAATTAAGAT
CAGGAAATAGAGAAATTGAGAATAGAAGTGGATGAAAGCAAAACAACACTTGAACAGGAGCAGCAGAAGG
CAGCCCTGGCCAGAGAGGAGTGCCTGAGACTAACAGAAGTGTGGGCGAATCTGAGCACCAACTGCACCT
CACCAGACAGGAAAAGATAGCATTGAGCAGAGCTTTAGCAAGGAAGCAAAGGCCCAAGCCCTTCAGGCC
CAGCAAAGAGAGCAGGAGCTGACACAGAAGATACAGCAAATGGAGGCCAGCATGACAAAACCTGAAAATG
AACAGTATTTGTTGCTGACCTCCAGAATACATTTTGTGAAAAGTTAAAGGAAGAATGCTGTACATTAGC
CAAGAACTGGAACAAATCTCTCAAAAACAGATCTGAAATAGCTCAACTCAGTCAAGAAAAAGGAT
ACATATGATAAATTGGGAAAGTTACAGAGAAGAAATGAAGAATTGGAGGAACAGTGTGTCCAGCATGGGA
GAGTACATGAGACGATGAAGCAAAGGCTAAGGCAGCTGGATAAGCACAGCCAGGCCACAGCCAGCAGCT
GGTGCAGCTCCTCAGCAAGCAGAACCAGCTTCTCTGGAGAGGCAGACCTGTGGAAGAGGTGGACCGG
CTGCGGACCCAGTACCAGCATGCCACAATCTGATTGC

ACGCGTACGCGGCCGCTCGAGCAGAACTCATCTCAGAAGAGGATCTGGCAGCAAATGATATCTGGATT
ACAAGGATGACGACGATAAGGTTTAA

Protein Sequence: >RC217089 representing NM_006642
Red=Cloning site Green=Tags(s)

```
MAKSPENSTLEEILGQYQRSLREHASRSIHQLTCALKEGDVTIGEDAPNLSFSTSVGNEDARTAWPELQQ
SHAVNQLKDLLRQQADKESEVSPSRRRKMSPLRSLEHEETNMPTMHDLVHTINDQSQYIHHLEAEVKFCK
EELSGMKNKIQVVVLENEGLQQQLKSQRQEETLREQTLLDASGNMHNHSWITTEDSGVGETSKRPF SHDN
ADFGKAASAGEQLELEKLEKLYEEKCEIEESQLKFLRNDLAEYQRTCEDLKEQLKHKEFLLAANTCNRVG
GLCLCKAQHEAVLSQHTNVHMQTIERLVKERDDLMSALVSVRSSLADTQQREASAYEQVKQVQLISEEA
NFEKTKALIQCQDLRKELEQAERLEKELASQQEKRAIEKDMMKKEITKEREYMGSKMLILSQNIAQLEA
QVEKVTKEKISAINQLEEQSRLASREMDVTKVCGEMRYQLNKTNMEKDEAEKEHREFRAKTNRDLEIKD
QEIEKRLRIELDESKHLEQEQQAALAREECLRLTELLGESEHQLHLTRQEKDSIQSFSKEAKAQAALQA
QQREQELTQKIQQMEAQHDKTENEQYLLLSQNTFLTKLKEECCTLAKKLEQISQKTRSEIAQLSQEKRY
TYDKLGKLRNEELEEQVCVQHGRVHETMKQRLRQLDKHSQATAQQLVQLL SKQNQLLLERQSLSEEVDL
LRTQLPSMPQSDC
```

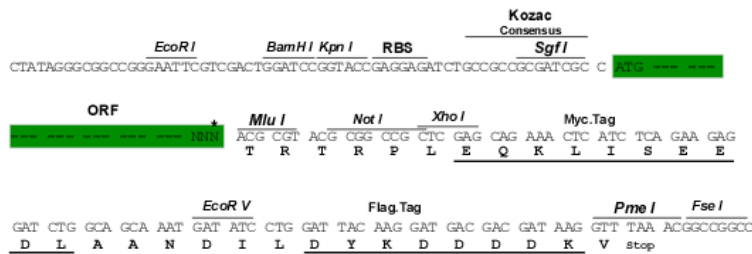
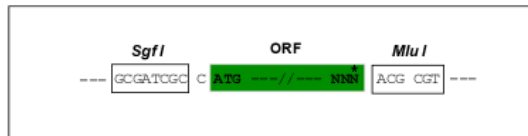
TRTRPLEQKLISEEDLAANDILDYKDDDDKV

Chromatograms: https://cdn.origene.com/chromatograms/mk8017_g09.zip

Restriction Sites: SgfI-MluI

Cloning Scheme:

Cloning sites used for ORF Shuttling:



* The last codon before the Stop codon of the ORF

ACCN: NM_006642

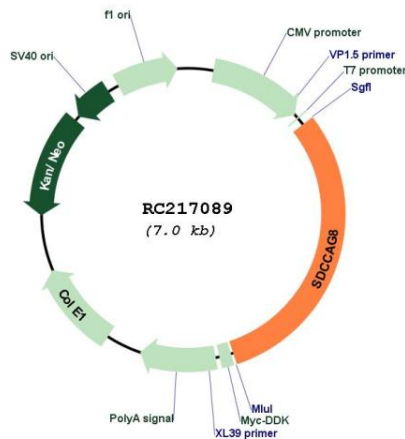
ORF Size: 2139 bp

OTI Disclaimer: The molecular sequence of this clone aligns with the gene accession number as a point of reference only. However, individual transcript sequences of the same gene can differ through naturally occurring variations (e.g. polymorphisms), each with its own valid existence. This clone is substantially in agreement with the reference, but a complete review of all prevailing variants is recommended prior to use. [More info](#)

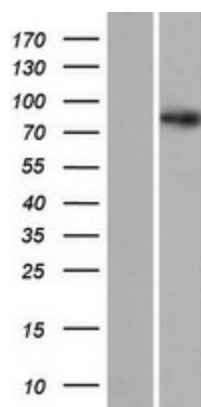
OTI Annotation: This clone was engineered to express the complete ORF with an expression tag. Expression varies depending on the nature of the gene.

- Components:** The ORF clone is ion-exchange column purified and shipped in a 2D barcoded Matrix tube containing 10ug of transfection-ready, dried plasmid DNA (reconstitute with 100 ul of water).
- Reconstitution Method:**
1. Centrifuge at 5,000xg for 5min.
 2. Carefully open the tube and add 100ul of sterile water to dissolve the DNA.
 3. Close the tube and incubate for 10 minutes at room temperature.
 4. Briefly vortex the tube and then do a quick spin (less than 5000xg) to concentrate the liquid at the bottom.
 5. Store the suspended plasmid at -20°C. The DNA is stable for at least one year from date of shipping when stored at -20°C.
- RefSeq:** [NM_006642.5](#)
- RefSeq Size:** 2142 bp
- RefSeq ORF:** 2142 bp
- Locus ID:** 10806
- UniProt ID:** [Q86SQ7](#)
- Cytogenetics:** 1q43-q44
- MW:** 82.5 kDa
- Gene Summary:** This gene encodes a centrosome associated protein. This protein may be involved in organizing the centrosome during interphase and mitosis. Mutations in this gene are associated with retinal-renal ciliopathy. [provided by RefSeq, Oct 2010]

Product images:



Circular map for RC217089



Western blot validation of overexpression lysate (Cat# [LY416508]) using anti-DDK antibody (Cat# [TA50011-100]). Left: Cell lysates from untransfected HEK293T cells; Right: Cell lysates from HEK293T cells transfected with RC217089 using transfection reagent MegaTran 2.0 (Cat# [TT210002]).