

Product datasheet for **RC217085**

BCAS3 (NM_017679) Human Tagged ORF Clone

Product data:

Product Type:	Expression Plasmids
Product Name:	BCAS3 (NM_017679) Human Tagged ORF Clone
Tag:	Myc-DDK
Symbol:	BCAS3
Synonyms:	GAOB1; MAAB
Mammalian Cell Selection:	Neomycin
Vector:	pCMV6-Entry (PS100001)
E. coli Selection:	Kanamycin (25 ug/mL)



[View online »](#)

ORF Nucleotide Sequence:

>RC217085 representing NM_017679
 Red=Cloning site Blue=ORF Green=Tags(s)

TTTTGTAATACGACTCACTATAGGGCGGCCGGGAATTCGTCGACTGGATCCGGTACCGAGGAGATCTGCC
 GCC**CGGATCGCC**

ATGAATGAAGCTATGGCTACAGATTCCCAAGAAGACCCAGTCGTTGACTGGTGGAGTTGTGGTTCGCC
 CCCAGGCTGTCACAGAGCAGTCCCTACATGGAAAGTGTGTGACTTTTCTGCAGGATGTTGTGCCACAGGC
 TTACAGTGGAAACCTCTAACAGAAAGAAAAGGAGAAAATAGTCTGGGTACAGATTTGAAAAATGCAGATTTA
 AATGATACATCAAGAAATCTGGAATTTTATGAAATACATAGTACTGGGAGTGAACCGCCTTTGTTGATTA
 TGATTGGCTACAGTGTGAATGCAGGTCTGGAGCATCCCTATCAGTGGCGAAGCACAAGAGCTCTTCTC
 TGTTTCGACATGGCCCAATTCGAGCGGCTAGAATCTTGCCTGCTCCACAGTTTGGTGTCAAAAATGTGAT
 AACTTTGTGAAAAAGACCCCTCCTTGGTGTGTTGAAGAGCATTGGATCTTCTGGCACAAGCCACCGT
 ACTGTTGTGTGGATCTGTATTCCTTCTGACTGGGAGATGGTCAAGTCCATTCAATTTAAGACACCTAT
 TTATGATCTCCATTGCAATAAACGGATCCTTGTCTAGTCTTGCAGGAGAAAATTGCTGCCTTTGATAGC
 TGTAATTTACGAAGAAATTCCTTGTACAAGCTGCTATCCATGTCCAGGCCAAACATGAATCCTATTG
 CTCTTGGGAGCCGCTGGCTTGTATGCAGAAAACAAGTTGATTTCGATGTCATCAGTCCCGTGGTGGAGC
 CTGTGGAGACAACATTCAGTCTTATACTGCCACAGTCAATAGTGTGCTAAAACATTGAAAAGTGGCCTG
 ACAATGGTAGGAAAAGTGGTGTGACTCAGTGTGACAGGCACACTGCCTTCAGGTGTGACAGAAGATGATGTTG
 CCATCCACAGTAATTCACGGCGGAGTCCCTTGGTCCCAGGCATCATCACAGTTATTGACACCGAAACCGT
 TGGAGAGGGCCAGGTGCTTGTGAGTGAGGATTCTGACAGTGTGAGTGGCCTTCCCTGCCCAT
 GAGAAGCCAGTGTGCTGCATGGCTTTAATAACAAGTGAATGCTTCTAGTCACAACAGACACCCCTTGCC
 ATGACTTTCATGTCTTCAAATCTGACTCATCCTTGGTCTCATCAAAATGTGCTGTCCACCATGTA
 TACTCTTACAGGGGAGAACTGAAGCCAAAGTACAGGACATCTGCTTACGCCATGACTGTCGCTGGGTT
 GTGGTCAGTACTCTCCGGGTAATCCACGTTTTCCCATCAACCCCTTATGGTGGCCAGCCTTGTGTTT
 GTACACATATGTCACCACGAGTGTGAATCGCATGAGCCGTTTCCAGAAAAGTGTGACTGGAAGAGAT
 TGAACAAGAAGTACGCTAAGCAAGGAGGTGCTGTAGCCCTGTTCCAGGTCTATCAAGCAGCCCTTCT
 GGGTACCCTTGCATGGGAACTGAACAGCCAAGACTCCTATAACAATTTTACCAACAACAACCTGGCA
 ACCCTCGGCTCTCCTCTTCCAGCTTGTGGTGTGATGCCTTGTGACAAAATCAAGCAGCCAATGAC
 ATTTGGGACCATACCAAACGAACCGGCAAGTTAAACCTCCTCCAAAATTTACCCAGCAAATCGATG
 GCGGAGAAATTTGTGTGGCTGCTATCTTCCGAACATCCAGGTGATGTTTGAATAATGCAGGTCTGA
 AAAGAGAAAAAGATCAGTCCAAACAAGTTGTAGTTGAGTCCCTGTACATTATCAGTTGCTATGGCACCTT
 AGTGGAACACATGATGGAGCCGCGACCCCTCAGCACTGCACCCAAGATTAGTGACGACACACCCTGGAA
 ATGATGACATCGCCTCGAGCCAGCTGGACTCTGGTTAGAACCCTCAATGGAATGAATTGCAGCCACCGT
 TTAATGCAAAACCCCTCTGCTCCTCGCTGCAGATGCAGTACAGTATTATCAGTTCTGCTTGTGGCCT
 GGTTCCTCCCTGGAAGTCTGGGCCATTACTCGACATGGGTCTTACGACAGTTTAGCTTCTGACCATAGT
 GGACAGGAAGATGAAGAATGGCTTTCCAGGTTGAAATGTAAACACACTGGACCCCATAGACGCTGTG
 GGATGGTCCACAGTCCAGTTCAAACCATCCATCCCTCAGGCCAAACACAGTTATCTCATCCAGTTC
 ATCTGTGTTGCAGTCTCATGGTCCGAGTGACAGCCACAGCCTCTTTGGATTTTGATACAGATGATCTT
 GATCTCAACAGTCTCAGGATCCAGCCAGTCCGCTCTGACCCCGTACAGTGCAGGATGCCAGGATCATCCCGTCCAG
 TCTCTGATCGAAGGGGAGTTTCCACAGTATTGATGCTGCCTCAGGTACCTTTGACAGGAGCGTGACCCCT
 GCTGGAGGTGTGCGGGAGCTGGCCTGAGGGCTTCGGGCTGCGGCACATGTCTCCATGGAGCACACGGAG
 GAGGGCTCCGGGAGCGACTTGGCAGGCCATGGCCGAGTACCTAGCCGGGACGTCGTGGGATCCGGAA
 CAGAACTTCAGCGAGAGGGAAGCATCGAGACTCTGAGTAACAGCTCAGGCTCCACCAGCGGCAGCATACC
 AAGAACTTTGATGGCTACCGATCTCCGCTGCCACCAATGAGAGCCAGCCCTCAGCCTCTTCCCGACT
 GGCTTCCCG

ACGCGTACGCGGCGCTCGAGCAGAACTCATCTCAGAAGAGGATCTGGCAGCAAATGATATCCTGGATT
 ACAAGGATGACGACGAT AAGGTTTAA

Protein Sequence: >RC217085 representing NM_017679
 Red=Cloning site Green=Tags(s)

MNEAMATDSPRRPSRCTGGVVVRPQAVTEQSYMESVVTFLQDVVPQAYSGTPLTEEKEKIVVWRFNADL
 NDTSRNLEFHEIHSTGSEPLLIMIGYSDGMQVWSIPISGEAQELFSVRHGPIRAARILPAPQFGAQKCD
 NFAEKRPLLGVCKSIGSSGTPPYCCVDLYSLRTGEMVKSIFKTPIDYDLHCNKRILVVVLQEKIAAFDS
 CTFTKKFFVTSCYPCPGPNMNPIALGSRWLAYENKLRCHQSRGACGDNIQSYTATVISAAKTLKSGL
 TMVGKVVVTQLTGLPSGVTEDDVAIHSNSRRSPLVPGIITVIDTETVGEQQLVSESDSDGIVAHFPAH
 EKPVCCMAFNSTGMLLVTTDTLGHDFHVFIILTHPWSSSQCAVHHLTYLHRGETEAKVQDICTSHDCRWV
 VVSTLRGTSHVFPINPYGGQPCVTRTHMSPRVVRNRSRFQKSAGLEEIEQELTSKQGGRCSPVPLSSSPS
 GSPLHGKLNQDSYNNFTNNNPGNPRLSPLSLMVVMPAQIKQPMTLGTITKRTGKVKPPPQISPSKSM
 GGEFCVAEIFGTSRSWFANNAGLKREKQSKQVVVESLYIISCYGTLVEHMMEPRLSTAPKISDDTPLE
 MMTSPRASWTLVRTPQWNEHQPPFNANHPLLLAADAVQYYQFLLAGLVPPGSPGITRHGSYDSLADHS
 GQEDEEWLSQVEIVTHTGPHRRLWMGPQFQFKTIHPSGQTTVISSSSSVLQSHGSPDTPQLLDFDITD
 DLNSLRIQPVRSDPVSMGSSRPVSDRRGVSTVIDAASGTFDRSVTLLEVCWSWPEGFGLRHMSMEHTE
 EGLRERLADAMAESPDRVVGSGETLQREGSIETLSNSSGSTSGSIPRNF DGYSPLPTNESQPLSLFPT
 GFP

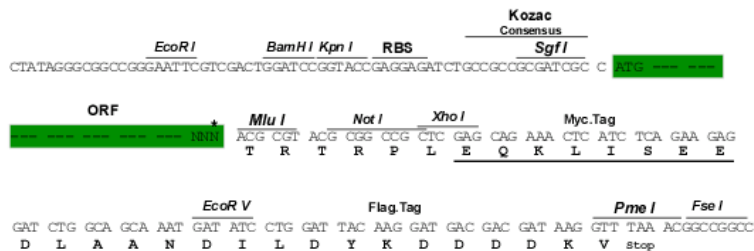
TRTRPLEQKLISEEDLAANDILDYKDDDDKV

Chromatograms: https://cdn.origene.com/chromatograms/mk6712_c08.zip

Restriction Sites: SgfI-MluI

Cloning Scheme:

Cloning sites used for ORF Shuttling:



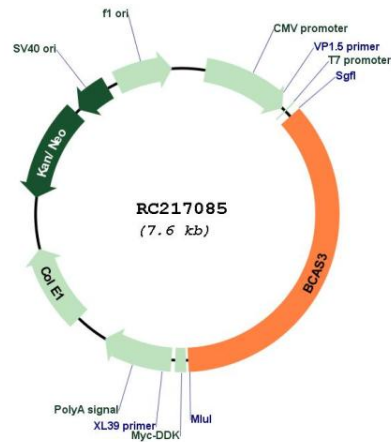
* The last codon before the Stop codon of the ORF

ACCN: NM_017679

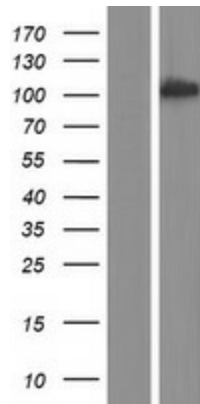
ORF Size: 2739 bp

OTI Disclaimer:	The molecular sequence of this clone aligns with the gene accession number as a point of reference only. However, individual transcript sequences of the same gene can differ through naturally occurring variations (e.g. polymorphisms), each with its own valid existence. This clone is substantially in agreement with the reference, but a complete review of all prevailing variants is recommended prior to use. More info
OTI Annotation:	This clone was engineered to express the complete ORF with an expression tag. Expression varies depending on the nature of the gene.
Components:	The ORF clone is ion-exchange column purified and shipped in a 2D barcoded Matrix tube containing 10ug of transfection-ready, dried plasmid DNA (reconstitute with 100 ul of water).
Reconstitution Method:	<ol style="list-style-type: none">1. Centrifuge at 5,000xg for 5min.2. Carefully open the tube and add 100ul of sterile water to dissolve the DNA.3. Close the tube and incubate for 10 minutes at room temperature.4. Briefly vortex the tube and then do a quick spin (less than 5000xg) to concentrate the liquid at the bottom.5. Store the suspended plasmid at -20°C. The DNA is stable for at least one year from date of shipping when stored at -20°C.
RefSeq:	NM_017679.5
RefSeq Size:	3514 bp
RefSeq ORF:	2742 bp
Locus ID:	54828
UniProt ID:	Q9H6U6
Cytogenetics:	17q23.2
MW:	99.5 kDa
Gene Summary:	Plays a role in angiogenesis. Participates in the regulation of cell polarity and directional endothelial cell migration by mediating both the activation and recruitment of CDC42 and the reorganization of the actin cytoskeleton at the cell leading edge. Promotes filipodia formation (By similarity). Functions synergistically with PELP1 as a transcriptional coactivator of estrogen receptor-responsive genes. Stimulates histone acetyltransferase activity. Binds to chromatin. [UniProtKB/Swiss-Prot Function]

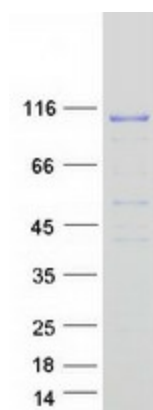
Product images:



Circular map for RC217085



Western blot validation of overexpression lysate (Cat# [LY413627]) using anti-DDK antibody (Cat# [TA50011-100]). Left: Cell lysates from untransfected HEK293T cells; Right: Cell lysates from HEK293T cells transfected with RC217085 using transfection reagent MegaTran 2.0 (Cat# [TT210002]).



Coomassie blue staining of purified BCAS3 protein (Cat# [TP317085]). The protein was produced from HEK293T cells transfected with BCAS3 cDNA clone (Cat# RC217085) using MegaTran 2.0 (Cat# [TT210002]).