

Product datasheet for RC217083

SKAP55 (SKAP1) (NM_003726) Human Tagged ORF Clone

Product data:

Product Type: Expression Plasmids
Product Name: SKAP55 (SKAP1) (NM_003726) Human Tagged ORF Clone
Tag: Myc-DDK
Symbol: SKAP1
Synonyms: HEL-S-81p; SCAP1; SKAP55
Vector: pCMV6-Entry (PS100001)
E. coli Selection: Kanamycin (25 ug/mL)
Cell Selection: Neomycin
ORF Nucleotide Sequence: >RC217083 representing NM_003726
Red=Cloning site Blue=ORF Green=Tags(s)

TTTTGTAATACGACTCACTATAGGGCGCCGGAATTCGTCGACTGGATCCGGTACCGAGGAGATCTGCC
GCC**CGGATCGCC**

ATGCAGGCCGCCCTCCCTGAGGAGATCCGTTGGCTCCTGGAAGATGCTGAAGAGTTTCTGGCAGAAG
GTTTGCAGGATGAGAACCTCAGCGCTGTTGCAAGGGATCACAGAGACCATTCTACGGGCTTTCAGCA
AATCAAAGCCAGTACTATTGGGATTTTCAGCCCCAAGGGGGAGACATTGGACAGGACAGCTCTGATGAT
AATCACAGCGGGACTCTTGGCCTGTCCCTCACATCCGATGCACCCTTTTTGTGAGATTATCAGGATGAGG
GAATGGAAGACATCGTAAAAGGAGCTCAAGAACTTGATAACGTAATCAAGCAAGGATACTTGGAGAAGAA
AAGCAAAGATCATAGTTTCTTTGGATCGGAGTGGCAGAAGCGATGGTGTGTTGTCAGCAGAGGTCTCTTC
TACTACTATGCTAATGAGAAGAGCAAGCAGCCAAAGGGACCTTCCTCATTAAAGGCTACAGTGTACGGA
TGGCCCCCACCTGCGAAGAGATTCCAAGAAAGAATCCTGCTTTGAACTGACCTCCAGGATAGGCGCAG
CTATGAGTTTACAGCTACTAGTCCAGCAGAAGCCAGAGACTGGGTGGATCAAATAAGTTTCTTGTAAAG
GATCTGAGCTCCTTAACCATTCCATATGAAGAGGATGAGGAGGAAGAAGAAAAAGAGACATATGATG
ATATTGATGGTTTTGACTCCCCAAGTTGTGGTCCCAGTGCAGACCCACTATCTTGCCTGGGAGTGTGGG
GATAAAAGAGCCTACAGAGGAGAAAGAAGAAGATATTTATGAAGTCTTGCCAGATGAAGAGCATGAT
CTAGAAGAGGATGAGAGTGGCACTCGACGAAAAGGAGTAGACTATGCCAGTTACTACCAGGGCCTATGGG
ATTGCCATGGTGACCAGCCAGATGAACTGTCTTCCAACGGGGTACCTCATCCGTATTCTGAGCAAAGGA
GTATAACATGTATGGCTGGTGGGAGAACTGAACAGCCTCGTTGGGATTGTTCCAAAGGAGTATCTC
ACCACTGCCTTTGAAGTGAAGAAAGA

ACGCGTACGCGGCCGCTCGAGCAGAACTCATCTCAGAAGAGGATCTGGCAGCAAATGATATCCTGGATT
ACAAGGATGACGACGATAAGGTTTAA



[View online »](#)

Protein Sequence: >RC217083 representing NM_003726
 Red=Cloning site Green=Tags(s)

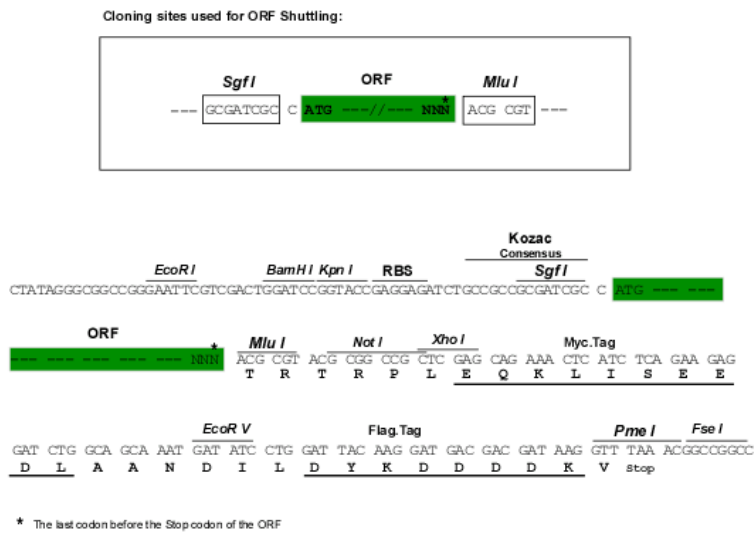
MQAAALPEEIRWLLEDAEEFLAEGLRNENLSAVARDHRDHILRGFQQIKARYYWDFQPQGGDIGQDSSDD
 NHSGTLGLSLTSDAPFLSDYQDEGMEDIKGAQELDNVIAKQYLEKKSVDHSFFGSEWQKRWCVVSRGLF
 YYYANEKSKQPKGTFLIKGYSVRMAPHLRRDSKKESEFELTSQDRRSYEFATSPAARDWVDQISFLLK
 DLSSLTIPYEDEEEEEKEEYDDIDGFDSPSCGSQCRPTILPGSVGIKEPTEEEKEEDIYEVLPDEEHD
 LEEDESGTRRKGVYASYQGLWDCHGDQPDLSFQRGDLIRILSKEYNMYGWWVWVGLNSLVGIVPKEYL
 TTAFEVEER

TRTRPLEQKLISEEDLAANDILDYKDDDDKV

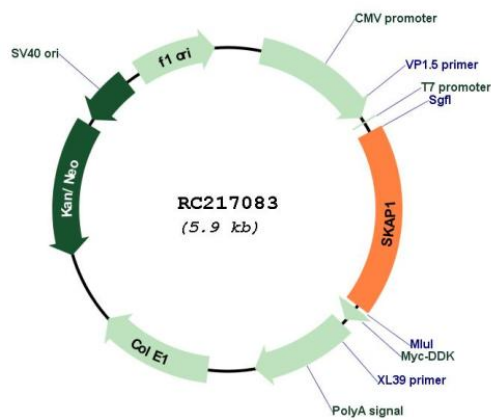
Chromatograms: https://cdn.origene.com/chromatograms/mk6111_g01.zip

Restriction Sites: SgfI-MluI

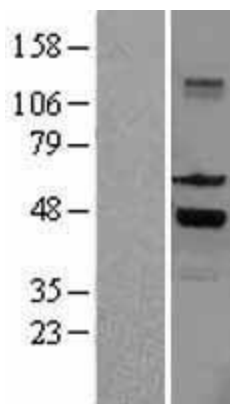
Cloning Scheme:



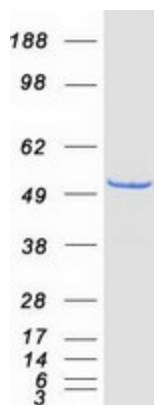
Plasmid Map:



ACCN:	NM_003726
ORF Size:	1077 bp
OTI Disclaimer:	The molecular sequence of this clone aligns with the gene accession number as a point of reference only. However, individual transcript sequences of the same gene can differ through naturally occurring variations (e.g. polymorphisms), each with its own valid existence. This clone is substantially in agreement with the reference, but a complete review of all prevailing variants is recommended prior to use. More info
OTI Annotation:	This clone was engineered to express the complete ORF with an expression tag. Expression varies depending on the nature of the gene.
Components:	The ORF clone is ion-exchange column purified and shipped in a 2D barcoded Matrix tube containing 10ug of transfection-ready, dried plasmid DNA (reconstitute with 100 ul of water).
Reconstitution Method:	<ol style="list-style-type: none">1. Centrifuge at 5,000xg for 5min.2. Carefully open the tube and add 100ul of sterile water to dissolve the DNA.3. Close the tube and incubate for 10 minutes at room temperature.4. Briefly vortex the tube and then do a quick spin (less than 5000xg) to concentrate the liquid at the bottom.5. Store the suspended plasmid at -20°C. The DNA is stable for at least one year from date of shipping when stored at -20°C.
RefSeq:	NM_003726.2 , NP_003717.2
RefSeq Size:	1531 bp
RefSeq ORF:	1080 bp
Locus ID:	8631
UniProt ID:	Q86WV1
Cytogenetics:	17q21.32
Domains:	SH3, PH
MW:	41.3 kDa
Gene Summary:	This gene encodes a T cell adaptor protein, a class of intracellular molecules with modular domains capable of recruiting additional proteins but that exhibit no intrinsic enzymatic activity. The encoded protein contains a unique N-terminal region followed by a PH domain and C-terminal SH3 domain. Along with the adhesion and degranulation-promoting adaptor protein, the encoded protein plays a critical role in inside-out signaling by coupling T-cell antigen receptor stimulation to the activation of integrins. [provided by RefSeq, Jul 2008]

Product images:

Western blot validation of overexpression lysate (Cat# [LY401226]) using anti-DDK antibody (Cat# [TA50011-100]). Left: Cell lysates from untransfected HEK293T cells; Right: Cell lysates from HEK293T cells transfected with RC217083 using transfection reagent MegaTran 2.0 (Cat# [TT210002]).



Coomassie blue staining of purified SKAP1 protein (Cat# [TP317083]). The protein was produced from HEK293T cells transfected with SKAP1 cDNA clone (Cat# RC217083) using MegaTran 2.0 (Cat# [TT210002]).