

Product datasheet for RC217078

LLGL1 (NM_004140) Human Tagged ORF Clone

Product data:

Product Type: Expression Plasmids
Product Name: LLGL1 (NM_004140) Human Tagged ORF Clone
Tag: Myc-DDK
Symbol: LLGL1
Synonyms: DLG4; HUGL; HUGL-1; HUGL1; Lgl1; LLGL; Mgl1
Mammalian Cell Selection: Neomycin
Vector: pCMV6-Entry (PS100001)
E. coli Selection: Kanamycin (25 ug/mL)
ORF Nucleotide Sequence: >RC217078 representing NM_004140
Red=Cloning site Blue=ORF Green=Tags(s)

TTTTGTAATACGACTCACTATAGGGCGGCCGGAATTCGTCGACTGGATCCGGTACCGAGGAGATCTGCC
 GCCCGATCGCC

ATGATGAAGTTTCGGTCCGGCGGCAGGGCGCCGACCCGAGCGCGAGAAGCTCAAGCAGGAGCTTTTCG
 CCTTCAACAAGACTGTGGAGCATGGCTTCCCAATCAGCCAGCGCCCTGGCCTTCGACCCGGAACCTTCG
 CATCATGGCCATCGCCACCAGGTCTGGGCTGTCAAGATCTATGGTGCACCTGGCGTGGAGTTCACAGGC
 CTGACCCGGGATGCAGCCACTGTACACAGATGCACCTTCTTGACCGGCCAGGGCCGCTCCTGTCCCTGC
 TTGATGACAGCAGTCTGCATCTCTGGGAGATTGCCACCATAATGGCTGTGCCACCTGGAAGAAGCACT
 CAGTTTCCAGCTGCCAGCCGGCCGGCTTTGATGGTGCCAGTGTCCGCTCAGCCTTACCCGAGTCACA
 GTGGTCTGTGGTGGCTGCCGGCGACATAGCAGCCCTGGGCACTGAGGGCAGCAGTGTCTTCTTCTCGG
 ATGTTACCACCCTGACCTGCTCGAGGGGCGAGCAGCTTGGCCAGGCGAGGTTCTGCGCAGCGTGCCAGA
 CGACTACCGCTGTGGGAAGGCACTGGGCCCCGTGGAGTCACTCCAGGGACACCTGCGGGACCCCAAAAG
 ATTCTCATTGGCTACAGCCGGGCGCTGTGGTCACTGGAACAGGCCTCGCAGTGTGTGGACCACATCT
 TCCTGGGAACCAGCAGCTGGAGAGCCTATGCTGGGGCGTGATAGCAGCACTGTGGTCACTCACACAG
 CGATGGCAGCTATGCTGTCTGGTCTGTGGATGCCGGCAGCTTCCCAACGCTGCAGCCACGGTAGCCACC
 ACACCTTACGGCCCTTCCCTGCAAGGCCATTAACAAGATTCTGTGGCGAAGTGTGAATCTGGGGGCC
 ACTTTATCATCTTCAGCGGTGGCATGCCCGTGCCAGCTATGGTGACCGCACTGTGTAAGTGTGCTTCG
 AGCCGAGACATTGGTACGCTGGACTTCACTTCCCGCATCATCGACTTCTTACAGTGCACAGCACACGG
 CCCGAGGATGAATTTGATGACCCCGAGCCCTGGCTGTGCTGCTGGAAGAGGAGCTGGTGGTGTGGACC
 TGCAGACTCCTGGCTGGCCAGCTGTGCCTGCCCATACCTGGCCCGCTGCACTCCTCTGCAATCACTTG
 CTCGGCCACGTGGCCAGTGTCCCGCCAAGCTGTGGGCCGATTGTGAGCGCTGGCGAGCAGCAGAGC
 CCCAGCCTGTCTCCAGTGCCTTGAGCTGGCCATCACTGGGGCCGAAACCTGGCCAGGAGCCGTCAC
 AGCGAGGGCTGCTGCTGACGGGCCATGAGGACGGCACCCTGAGGTTCTGGGATGCCTCGGGTGTGGCGCT
 GCGGCCGCTCTAAGCTGAGCACAGCTGGCCTTCCAGACAGACTGTGAGCACGCTGACAGCCTGGCC



[View online »](#)

CAGGCTGCCGAGGACGACTGGCCACCCTCCGCAAGGTGGGCTGCTTCGATCCCTACAGTGACGATCCCC
 GGCTTGCGGTGCAGAAGTTGCTCTCTGCAAGTATACAGCCCAGATGGTGGTGGCTGGCACTGCAGGCCA
 GGTGCTGGTACTGGAGCTTAGTGATGTCCGGTGGAGCAGGCGGTGAGCGTGGCCATCATAGACCTCCTC
 CAGGACCGCGAGGGCTTACATGGAAGGGCCACGAGCGGTGAGCCCACGCACGGGGCCGCTGCCCTGGC
 CTGCTGGCTTCCAGCCCCGTGCTCTGGTGCAGTGCCTGCCCCAGCTGCTGTAAACCGCTGCACACTCCA
 CACCGAGTGGACCTCGTGGCTTTTGGCACCAGTATGGCTTTGGCTCTTCGACTACCAGCCGAAGAGC
 CCTGTGCTGGCCAGGTGCACCTTCCACCCCAATGACTCCCTGGCCATGGAGGGTCCGCTCTCCGGGTGA
 AGTCTCTCAAGAAGTCACTGCGCCAGTCTTCCGGCGCATTTCGAAGAGTCGTGTCTCTGGCAAGAAGCG
 GGCTGCTAATGCCAGCAGCAAGTTGCAGGAAGCCAATGCACAGCTGGCTGAGCAGGCTGCCCCACGAC
 GTGGAGATGACGCCCGTGCAGCGCCGATTGAGCCCCGCTCTGCCGATGACTCCTTGTGGGTGTCGTGC
 GTTGCCTATACTTTCGCGACACATTCTTCGAGATGGGGCCACCACGGGCCACCATGTGGGCTGGCAC
 CAACTCAGGCTCTGTGTTGCCTATGACTGGAGGTGCCGGCAGCAGCAGTGGTGGTGAAGAAGCGGCT
 GAGCAAGCGGTGGAGGCCGTGCTGGCAAGGAGGTGCAGCTGATGACCCGGGCGCTGTGGTGGCCATTG
 CCGTGTGGACGGGCGTGGCCGCCACTGCCGAGCCCTACGAGGCTCACGGGACCTGGCGAGGCACC
 TGACATGCAGGTTGGTACGCTGTGCTCATCGCATCTGAGGAGCAGTTCAAGGTGTTCACTGCCCAAG
 GTGAGCGCAAGACCAAGTTCAAGCTGACGGCCATGAGGGCTGCTGTGCGCAAGGTGGCACTGGCCA
 CGTTTGCCAGTGTGGCCTGCGAGGACTATGCTGAGACCTGCCTGGCCTGCCTACCAACCTGGGTGACGT
 CCACGTCTTCTCGGTGCCTGGCCTGCGGCCACAGGTGACTATTCTGCATCCGGAAGGAGGACATCAGC
 GGCATCGCTTCTGCTGCTTTACGCGCCATGGCCAGGGCTTTTACCTGATATCCCATCAGAATTTGAAC
 GCTTCTCCCTAAGTGCCCGAACATCACAGAGCCGCTCTGCTCTCTGGACATTAAGTGGCCCCGCGATGC
 CACCCAGGCCAGTTACAGGATCCGAGAGTACCCAAGTGAAGCCAGGCTAACGGGACCCCAAGCATCCTG
 CTGGCCCCACAGAGCCTTGATGGAAGCCCTGATCCAGCCACAGCATGGGACCTGACACCCCGGAGCCAC
 CCGAGGCTGCACCTCACCCATGCCATCGACTCAGCCACAGTGCCTGACACCAGCTGGACACGACAGG
 GGACGTCACAGTGAAGATGTGAAGATTCTGGGCTCCTCTGAGGAGTCAGAGAAGAAGCTGAGGAAC
 CTGGCAGAAGACGAGGCCACGCCTGTGCCATCCTGATCAAA

ACGCGTACGCGGCCGCTCGAGCAGAACTCATCTCAGAAGAGGATCTGGCAGCAATGATATCCTGGATT
 ACAAGGATGACGACGATAAGGTTTAA

Protein Sequence:

>RC217078 representing NM_004140

Red=Cloning site Green=Tags(s)

MMKFRFRRQGADPQREKIKQELFAFNKTVHEHGFNPQPSALAFDPELRIMAIIGTRSGAVKIYGAPGVEFTG
 LHRDAATVTQMHFLTGGQRLLSLLDDSSLHLWEIVHNGCAHLEEALSFQLPSRPGFDGASAPLSLTRVT
 VVLLVAAGDIAALGTEGSSVFFLDVTTLLLEGGTLAPGEVLRVSPDDYRCGKALGPVESLQGHRLDPTK
 ILIGYSRGLLVIWNQASQVDHIFLGNQLES LCWGRDSSVSSHSDGSYAVWSDAGSFPTLQPTVAT
 TPYGPFPCKAINKILWRNCESGGHFIIFSGMPRASYGDRHCVSVLRAETLVTLDFTSRIIDFFTVHSTR
 PEDEFDDPQALAVLLEELVVLDLQTPGWPAVPAPYLAPLHSSAITCSAHVASVPAKLWARIVSAGEQQS
 PQPVSSALSWPITGGRNLAQEPSQRGLLLTGHDGTVRFWDASGVALRPLYKLSLSTAGLFQTDCEHADSLA
 QAAEDDWPPFRKVGCFDPYSDDPRLGVQKVALCKYTAQMVVAGTAGQVLELSDVPVEQAVSVAIIDLL
 QDREGFTWKGHERLSPRTGPLPWPAGFQPRVLVQCLPPAAVAVTLHTEWVSLVAFGTSHGFGLFDYQRKS
 PVLARCTLHPNDSLAMEGPLSRVKSLKSLRQSFRRIRKSRVSGKKRAANASSKLQANAQLAEQACPHD
 VEMTPVQRRIEPRSADDSLGVVRLYFADTFLRDGAHHGPTMWAGTNSGSVFAYALEVPAAVGGEKRP
 EQAVEAVL GKEVQLMHRAPVVAIAVLDGRGRPLPEPYEASRDLAQAPDMQGGHAVLIASEEQFKVFTLPK
 VSAKTKFKLTAHEGCRVRKVALATFASVACEDYAECLACLNLGDVHVFSVPLRPQVHYSCIRKEDIS
 GIA SCVFTRHGQGFYLISPSEFERFSLSARNITEPLCSLDINWPRDATQASYRIRESPKLSQANGTPSIL
 LAPQSLDGSPPDAHSMGPDTPPEPEAALSPMSIDSATSADTTLDTTGDVTVEDVKDFLGSSESEKLNLRN
 LAEDEAHACAILIK

TRTRPLEQKLI SEEDLAANDILDYKDDDDKV

Chromatograms:

https://cdn.origene.com/chromatograms/mk8102_e06.zip

Restriction Sites: SgfI-MluI

Cloning Scheme:



ACCN: NM_004140

ORF Size: 3192 bp

OTI Disclaimer: The molecular sequence of this clone aligns with the gene accession number as a point of reference only. However, individual transcript sequences of the same gene can differ through naturally occurring variations (e.g. polymorphisms), each with its own valid existence. This clone is substantially in agreement with the reference, but a complete review of all prevailing variants is recommended prior to use. [More info](#)

OTI Annotation: This clone was engineered to express the complete ORF with an expression tag. Expression varies depending on the nature of the gene.

Components: The ORF clone is ion-exchange column purified and shipped in a 2D barcoded Matrix tube containing 10ug of transfection-ready, dried plasmid DNA (reconstitute with 100 ul of water).

Reconstitution Method:

1. Centrifuge at 5,000xg for 5min.
2. Carefully open the tube and add 100ul of sterile water to dissolve the DNA.
3. Close the tube and incubate for 10 minutes at room temperature.
4. Briefly vortex the tube and then do a quick spin (less than 5000xg) to concentrate the liquid at the bottom.
5. Store the suspended plasmid at -20°C. The DNA is stable for at least one year from date of shipping when stored at -20°C.

RefSeq: [NM_004140.3](#), [NP_004131.3](#)

RefSeq Size: 4225 bp

RefSeq ORF: 3195 bp

Locus ID: 3996

UniProt ID: [Q15334](#)

Cytogenetics: 17p11.2

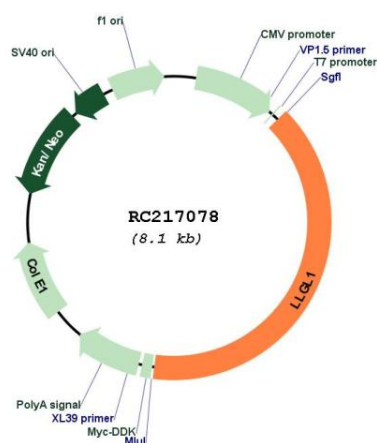
Protein Families: Druggable Genome

Protein Pathways: Tight junction

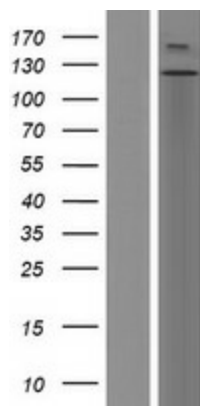
MW: 115.4 kDa

Gene Summary: This gene encodes a protein that is similar to a tumor suppressor in *Drosophila*. The protein is part of a cytoskeletal network and is associated with nonmuscle myosin II heavy chain and a kinase that specifically phosphorylates this protein at serine residues. The gene is located within the Smith-Magenis syndrome region on chromosome 17. [provided by RefSeq, Jul 2008]

Product images:



Circular map for RC217078



Western blot validation of overexpression lysate (Cat# [LY418186]) using anti-DDK antibody (Cat# [TA50011-100]). Left: Cell lysates from untransfected HEK293T cells; Right: Cell lysates from HEK293T cells transfected with RC217078 using transfection reagent MegaTran 2.0 (Cat# [TT210002]).