

## Product datasheet for RC217075

### PDE9A (NM\_001001576) Human Tagged ORF Clone

#### Product data:

Product Type:	Expression Plasmids
Product Name:	PDE9A (NM_001001576) Human Tagged ORF Clone
Tag:	Myc-DDK
Symbol:	PDE9A
Synonyms:	HSPDE9A2
Mammalian Cell Selection:	Neomycin
Vector:	pCMV6-Entry (PS100001)
E. coli Selection:	Kanamycin (25 ug/mL)
ORF Nucleotide Sequence:	>RC217075 representing NM_001001576 Red=Cloning site Blue=ORF Green=Tags(s)

TTTTGTAATACGACTCACTATAGGGCGGCCGGAATTCGTCGACTGGATCCGGTACCGAGGAGATCTGCC  
GCCCGGATCGCC

ATGACCAACTGCCCTGTAAGTACAGTTTTTTGGATAACCACAAGAAGTTGACTCCTCGACGCGATGTTCC  
CACTTACCCCAAGTACCTGCTCTCTCCAGAGACCATCGAGGCCCTGCGGAAGCCGACCTTTGACGTCTG  
GCTTTGGGAGCCCAATGAGATGCTGAGCTGCCTGGAGCACATGTACCACGACCTCGGGCTGGTCAGGGAC  
TTCAGCATCAACCCTGTACCCTCAGGAGGTGGCTGTTCTGCGTCCACGACAACACAGAAAACACCCCT  
TCCACAACCTCCGGCACTGCTTCTGCGTGGCCAGATGATGTACAGCATGGTCTGGCTCTGCAGTCTCCA  
GGAGAAGTTCTCACAACGGATATCCTGATCCTAATGACAGCGGCCATCTGCCACGATCTGGACCATCCC  
GGCTACAACAACACGTACCAGATCAATGCCCGCACAGAGCTGGCGGTCCGCTACAATGACATCTCACCGC  
TGGAGAACCACCACTGCGCCGTGGCCTTCCAGATCCTCGCCGAGCCTGAGTGCAACATCTTCTCCAACAT  
CCCACCTGATGGGTTCAAGCAGATCCGACAGGGAATGATCACATTAATCTTGCCACTGACATGGCAAGA  
CATGCAGAAATATGGATTCTTTCAAAGAGAAAATGGAGAATTTTACTACAGCAACGAGGAGCAGATGA  
CCCTGCTGAAGATGATTTTGATAAAATGCTGTGATATCTAACGAGGTCGTCGAATGGAAGTCGCAGA  
GCCTTGGGTGGACTGTTTATTAGAGGAATTTTTATGCAGAGCGACCGTGAGAAGTCAGAAGCCCTTCT  
GTGGCACCGTTTCATGGACCGAGACAAAGTGACCAAGCCACGCCAGATTGGGTTTCATCAAGTTTGTCC  
TGATCCCAATGTTTGAAACAGTGACCAAGCTCTTCCCCATGGTTGAGGAGATCATGCTGCAGCCACTTTG  
GGAATCCCAGATCGCTACGAGGAGCTGAAGCGGATAGATGACGCCATGAAAGAGTTACAGAAGAAGACT  
GACAGCTTGACGTCTGGGGCCACCGAGAAGTCCAGAGAGAGAAGCAGAGATGTGAAAAACAGTGAAGGAG  
ACTGTGCC

ACGGGGCCGCTCGAGCAGAAACTCATCTCAGAAGAGGATCTGGCAGCAAATGATATCCTGGA  
TTACAAGGATGACGACGATAAGGTTTAA



[View online »](#)

**Protein Sequence:** >RC217075 representing NM\_001001576  
Red=Cloning site Green=Tags(s)

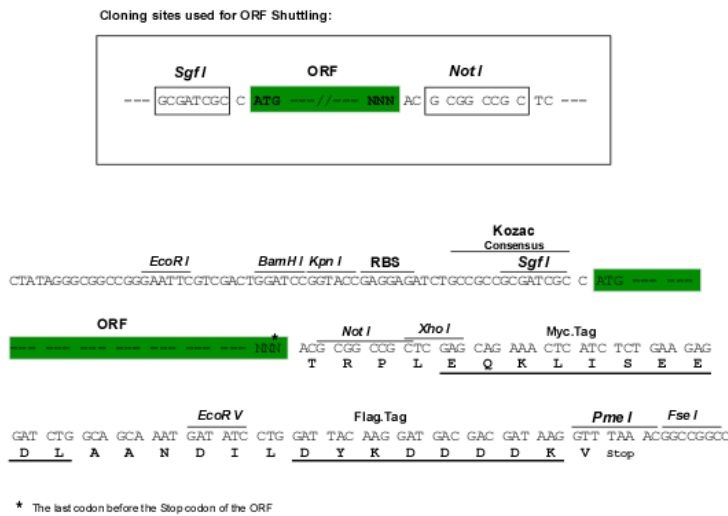
MTNCPCKYSFLDNHKKLTPRRDVPTYPKYLLSPETIEALRKPTFDVWLWEPNEMLSCLEHMYHDLGLVVRD  
 FSINPVTLLRRWLCVHDNYRNNPFHNRHCFCAQMMYSMWLCSLQEKFSQTDILILMTAAICHDLDP  
 GYNNYQINARTELAVRNDISPLENHCAVAFQILAEPECNIFSNIPPDGFKQIRQGMITLILATDMAR  
 HAEIMDSFKEKMENFDYSNEEHMTLLKMLIKCCDISNEVRPMEVAEPWVDCLLEEYFMQSDREKSEGLP  
 VAPFMDRDKVTKATAQIGIKFVLIIPMFETVTKLFPMVVEIIMLQPLWESRDYEEELKRIDDAMKELQKKT  
 DSLTSGATEKSRERSRDYKNSGDC

TRRLEQKLISEEDLAANDILDYKDDDDKV

**Chromatograms:** [https://cdn.origene.com/chromatograms/mk8055\\_g02.zip](https://cdn.origene.com/chromatograms/mk8055_g02.zip)

**Restriction Sites:** SgfI-NotI

**Cloning Scheme:**



**ACCN:** NM\_001001576

**ORF Size:** 1128 bp

**OTI Disclaimer:** The molecular sequence of this clone aligns with the gene accession number as a point of reference only. However, individual transcript sequences of the same gene can differ through naturally occurring variations (e.g. polymorphisms), each with its own valid existence. This clone is substantially in agreement with the reference, but a complete review of all prevailing variants is recommended prior to use. [More info](#)

**OTI Annotation:** This clone was engineered to express the complete ORF with an expression tag. Expression varies depending on the nature of the gene.

**Components:** The ORF clone is ion-exchange column purified and shipped in a 2D barcoded Matrix tube containing 10ug of transfection-ready, dried plasmid DNA (reconstitute with 100 ul of water).

**Reconstitution Method:**

1. Centrifuge at 5,000xg for 5min.
2. Carefully open the tube and add 100ul of sterile water to dissolve the DNA.
3. Close the tube and incubate for 10 minutes at room temperature.
4. Briefly vortex the tube and then do a quick spin (less than 5000xg) to concentrate the liquid at the bottom.
5. Store the suspended plasmid at -20°C. The DNA is stable for at least one year from date of shipping when stored at -20°C.

**RefSeq:** [NM\\_001001576.1](#), [NP\\_001001576.1](#)

**RefSeq Size:** 1634 bp

**RefSeq ORF:** 1131 bp

**Locus ID:** 5152

**UniProt ID:** [O76083](#)

**Cytogenetics:** 21q22.3

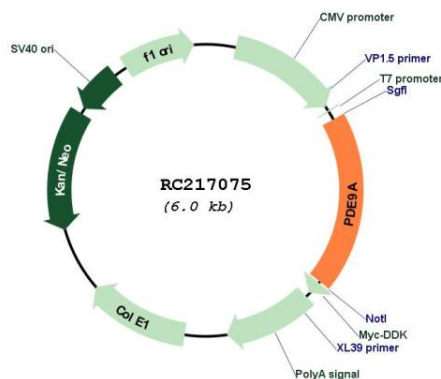
**Protein Families:** Druggable Genome

**Protein Pathways:** Progesterone-mediated oocyte maturation, Purine metabolism

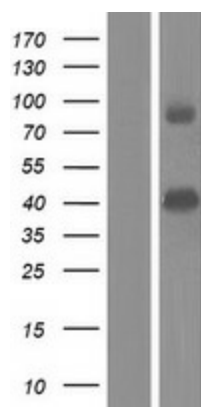
**MW:** 44 kDa

**Gene Summary:** The protein encoded by this gene catalyzes the hydrolysis of cAMP and cGMP to their corresponding monophosphates. The encoded protein plays a role in signal transduction by regulating the intracellular concentration of these cyclic nucleotides. Multiple transcript variants encoding several different isoforms have been found for this gene. [provided by RefSeq, Jul 2008]

### Product images:



Circular map for RC217075



Western blot validation of overexpression lysate (Cat# [LY424393]) using anti-DDK antibody (Cat# [TA50011-100]). Left: Cell lysates from untransfected HEK293T cells; Right: Cell lysates from HEK293T cells transfected with RC217075 using transfection reagent MegaTran 2.0 (Cat# [TT210002]).