

Product datasheet for RC217072L1

RTN4RL2 (NM_178570) Human Tagged Lenti ORF Clone

Product data:

Product Type:	Expression Plasmids
Product Name:	RTN4RL2 (NM_178570) Human Tagged Lenti ORF Clone
Tag:	Myc-DDK
Symbol:	RTN4RL2
Synonyms:	NgR2; NGRH1
Mammalian Cell Selection:	None
Vector:	pLenti-C-Myc-DDK (PS100064)
E. coli Selection:	Chloramphenicol (34 ug/mL)
ORF Nucleotide Sequence:	The ORF insert of this clone is exactly the same as(RC217072).
Restriction Sites:	SgfI-MluI
Cloning Scheme:	

Cloning sites used for ORF Shuttling:



* The last codon before the Stop codon of the ORF.

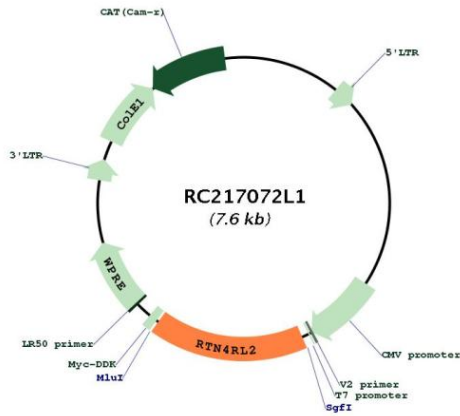
ACCN:	NM_178570
ORF Size:	1260 bp



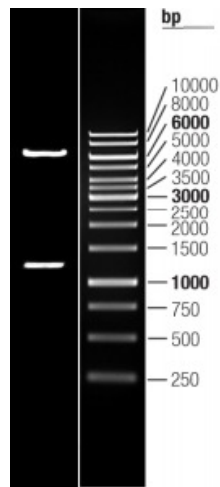
[View online »](#)

OTI Disclaimer:	The molecular sequence of this clone aligns with the gene accession number as a point of reference only. However, individual transcript sequences of the same gene can differ through naturally occurring variations (e.g. polymorphisms), each with its own valid existence. This clone is substantially in agreement with the reference, but a complete review of all prevailing variants is recommended prior to use. More info
OTI Annotation:	This clone was engineered to express the complete ORF with an expression tag. Expression varies depending on the nature of the gene.
Components:	The ORF clone is ion-exchange column purified and shipped in a 2D barcoded Matrix tube containing 10ug of transfection-ready, dried plasmid DNA (reconstitute with 100 ul of water).
Reconstitution Method:	<ol style="list-style-type: none">1. Centrifuge at 5,000xg for 5min.2. Carefully open the tube and add 100ul of sterile water to dissolve the DNA.3. Close the tube and incubate for 10 minutes at room temperature.4. Briefly vortex the tube and then do a quick spin (less than 5000xg) to concentrate the liquid at the bottom.5. Store the suspended plasmid at -20°C. The DNA is stable for at least one year from date of shipping when stored at -20°C.
RefSeq:	NM_178570.1
RefSeq Size:	1263 bp
RefSeq ORF:	1263 bp
Locus ID:	349667
UniProt ID:	Q86UN3
Cytogenetics:	11q12.1
Protein Families:	Druggable Genome
MW:	45.9 kDa
Gene Summary:	Cell surface receptor that plays a functionally redundant role in the inhibition of neurite outgrowth mediated by MAG (By similarity). Plays a functionally redundant role in postnatal brain development. Contributes to normal axon migration across the brain midline and normal formation of the corpus callosum. Does not seem to play a significant role in regulating axon regeneration in the adult central nervous system. Protects motoneurons against apoptosis; protection against apoptosis is probably mediated by MAG (By similarity). Like other family members, plays a role in restricting the number dendritic spines and the number of synapses that are formed during brain development (PubMed:22325200). Signaling mediates activation of Rho and downstream reorganization of the actin cytoskeleton (PubMed:22325200).[UniProtKB/Swiss-Prot Function]

Product images:



Circular map for RC217072L1



Double digestion of RC217072L1 using SgfI and MluI