

Product datasheet for **RC217069**

USP33 (NM_201624) Human Tagged ORF Clone

Product data:

| | |
|---------------------------|--|
| Product Type: | Expression Plasmids |
| Product Name: | USP33 (NM_201624) Human Tagged ORF Clone |
| Tag: | Myc-DDK |
| Symbol: | USP33 |
| Synonyms: | VDU1 |
| Mammalian Cell Selection: | Neomycin |
| Vector: | pCMV6-Entry (PS100001) |
| E. coli Selection: | Kanamycin (25 ug/mL) |



[View online »](#)

**ORF Nucleotide
Sequence:**

>RC217069 representing NM_201624
 Red=Cloning site Blue=ORF Green=Tags(s)

TTTTGTAATACGACTCACTATAGGGCGGCCGGAATTCGTCGACTGGATCCGGTACCGAGGAGATCTGCC
 GCC**CGCATCGCC**

ATGTCAGCTTTTCGAAATCATTGTCACATTTGGATTGATTGGTGAATAACAAAAAGAGATTTGATAC
 AAAAAATCCCTTGGTACTTGTGAGGATTGTAAAGTCCAAGGACCAATCTTTGGGCATGTCTGGAGAATAG
 ATGTTTCATATGTTGGCTGTGGTGAATCACAAAGTAGATCACAGCACCATACATTCTCAGGAGACAAAGCAT
 TATCTAACTGTGAACCTTACCACTCTTCGAGTATGGTGTATGCTTGCAGCAAAGAAGTATTTTTGGATA
 GGAAATTAGGAACTCAGCCTTCATTGCCTCATGTAAGACAACCTCACAAATACAAGAAAACAGTGTCCA
 GGATTTTAAAATACCCAGTAATACAACATTAATAACTCCTCTGGTTGCCGATTTTGATGATCTGGATATA
 GAAGCGGATGAAGAAGATGAACCTAGGGCCAGAGGTCTTACAGGTTTGAAAAATATTGGAATACTTGTT
 ACATGAATGCAGCTTTCAGGCTCTTTCTAATTGCCACCTTTGACACAGTTTTTTCTTGATTGTGGAGG
 ACTAGCTCGAACAGATAAGAACTGCCATTTGTAAAAGTTATCTCAAATAATGACAGAGCTGTGGCAT
 AAAAGCAGGCCAGGATCTGTTGTGCTACTACTCTGTTTCAAGGAATTAATACTGTAATCAACATTTTC
 GGGGTATTCTCAGCAGGATGCTCAAGAATTCCTTCGATGTTAATGGATTTGCTTCATGAAGAATTGAA
 AGAGCAAGTCATGGAAGTGAAGAAGATCCGCAAAACCAATCAACTGAGGAGACAATGGAAGAAGACAAG
 AGCCAGTCGGATGTAGATTTTCAGTCTTGTGAATCTTGTAGCAACAGTGTAGAGCAGAAAAATGAAAATG
 GCTCTAGATGCTTTTCTGAAGATAATAATGAAACAACAATGTTAATTCAGGATGATGAAAACAATTCAGA
 AATGTCAAAGGATTGGCAAAAAGAGAAGATGTGAATAAGATTAATAAGTAAATTTCTGAAGCGCAATTT
 GATAAAGATAGAGACTCTATATCTGAAACAGTCGACTTAAACAACCAGGAACTGTCAAAGTCAAAATAC
 ACAGCAGACTTCAGAATATATCACTGATGCCATTCGAATGACCTGTCTACACCACAGACTCCTCCATC
 AAATGAAGGTGTTAATCCACGTTTATCGCAAGCCCTCCTAAATCAGGCAATTTGTGGCCAGGATTGGCA
 CCACCACAAAAAGCTCAGTCTGCATCTCAAAGAGAAAAAACAGCACAAGAATACAGAAGTGTTA
 TTTTCAGACATATTTGATGGAACAATCATTAGTTCAAGTGCAGTGTCTGACTTGTGACAGGGTGTCTGTAAC
 CCTCGAGACCTTTCAAGATCTGCCTTGCCAATTCCTGGCAAGGAAGACCTTGCTAAGCTGCATTATCA
 AGTCATCAACTTCTATAGTCAAAGCAGGATCATGTGGCAAGCATATGCTCCACAAGGGTGGATAGCTT
 TTTTCATGGAATATGTGAAGAGTTTGTGTCTCATGTGTCCCTAGCTGGTTTTGGGGTCCAGTAGTAAC
 CTTGCAAGATTGTCTTGCTGCCTCTTTGCCAGAGATGAACTAAAAGGTGACAATATGTACAGTTGTGAA
 AAATGCAAAAAGTTGAGAAATGGAGTGAAGTTTTGTAAAGTACAAAATTTCTGAGATTTTGTGCATCC
 ACCTTAAAAGATTGAGACATGAACTAATGTTTTCCACCAAAATCAGTACCATGTTTCATTTCCGCTAGA
 AGGCTTGGATCTTCAGCCATTTCTGCTAAGGATAGTCCAGCTCAAATTTGTGACATATGATCTTCTGTCA
 GTCATTTGCCATCATGGAAGTGAAGTGTGGACACTATATAGCCTACTGCCGAAACAATCTAAATAATC
 TCTGGTATGAATTTGATGATCAGAGTGTCACTGAAGTTTCAGAATCTACTGTACAAAATGCAAGAAGCTTA
 CGTTCTTTTCTATAGGAAGAGCAGCGAAGAGGCCAAAAAGAGAGGAGAAGGATATCAAATTTATTGAAC
 ATAAATGGAACCAAGCCTCCTTCAGTTTTATTTCTCGACAGTGGCTTAATAAATTTAAGACCTTTGCCG
 AACCTGGCCCTATTTCAAATAATGACTTTCTTTGTATTTCATGGAGGTGTCTCCCAAGAAAAGCTGGTTA
 TATTGAAGACCTGGTTTTGATGCTGCCTCAGAACATTTGGGATAACCTATATAGCAGGTATGGTGGAGGA
 CCAGCTGTCAACCATCTGTACATTTGTCACTTGGCAAAATGAGCGGAGAAAAATTGAAAAAAGAAGAA
 AAATGAAATGGAATTTTATTTCGCTTAAACAGAGCGTTCCAAAAAGAGGACTCTCCAGCTACTTTTTTA
 TTGCATCAGTATGCAGTGGTTTATAGAAATGGGAAAGTTTTGTGAAGGTAAGATGGAGATCCTCCAGGT
 CCTATTGACAATACTAAGATTGCAGTCACTAAATGTGGTAATGTGATGCTTAGGCAAGGAGCAGATTCTG
 GCCAGATTTCTGAAGAAACATGGAATTTCTGCAGTCTATTTATGGTGGAGGGCTGAAGTTATCCTGCG
 ACCTCCGTTGTTTCATGTTGATCCAGATATACTCAAGCAGAAGAAAAATGAAGTAGAACTCGGTCT
 TTG

ACGCGTACGCGGCCGCTCGAGCAGAACTCATCTCAGAAGAGGATCTGGCAGCAAATGATATCCTGGATT
 ACAAGGATGACGACGATAAGGTTTAA

Protein Sequence: >RC217069 representing NM_201624
Red=Cloning site Green=Tags(s)

```
MSAFRNHCPHLDSVGEITKEDLIQKSLGTCQDCKVQGPNLWACLENRCSYVGCGESQVDHSTIHSQETKH
YLTVNL TLRVWCYACSKVEFLDRKLTGTPSLPHVRQPHQIQENSVDQFKIPSNNTLKTPLVAVFDDLDI
EADDEDEL RARGLTGLKNIGNTCYMNAALQALSNCPLTQFFLDCGGLARTDKKPAICKSYLKLMTLWH
KSRPGSVVPTTLFQGIKTVNPTFRGYSQQDAQEFLRCLMDLLHEELKEQVMEVEEDPQTITTEETMEEDK
SQSDVDFQSCESCNSDRAENENGRFCFSEDNNETTMLIQDDENNSEMCKDWQKEKMCNKINKVNSEGEF
DKDRDSISETVDLNNQETVKVQIHSRASEYITDVHSNDLSTPQILPSNEGVNPRLSASPPKSGNLWPGLA
PPHKAQASAPKRKKQHKYRSVISDFDGTIISSVQCLTCDRVSVTLETQDLSLPIPKEDLAKLHSS
SHPTSIVKAGSCGEAYAPQGWIAFFMEYVKRFVSVPSWFGPVTTLQDCLAFFARDELKGDNMYSCE
KCKKLNRNGVKFCKVQNFPEILCIHLKFRHELMFSTKISTHVSFPLEGLDLQPFLLAKDSPAQIVTYDLS
VICHHTGASSGHYIAYCRNLLNLYWYFDDQSVTEVSESTVQNAEAYVLFYRKSSEEAQKERRRISNLLN
IMEPSLLQFYISRQWLNFKFTFAEPGPISNNDFLCIHGGVPPRKAGYIEDLVLMPLQNIWDNLYSRVGGG
PAVNHLIYICHTCQIEAEKIEKRRKTELEIFIRLNRAFQKEDSPATFYCISMQWFREWESFVKGKGDGPPG
PIDNTKIAVTCKGNVMLRQGADSGQISEETWNFLQSIYGGGPEVILRPPVVHVDPDILQAEKIEVETRS
L
```

TRTRPLEQKLISEEDLAANDILDYKDDDDKV

Chromatograms: https://cdn.origene.com/chromatograms/mk8014_a01.zip

Restriction Sites: SgfI-MluI

Cloning Scheme:

Cloning sites used for ORF Shuttling:



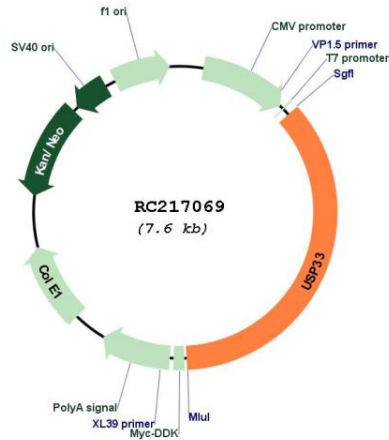
* The last codon before the Stop codon of the ORF

ACCN: NM_201624

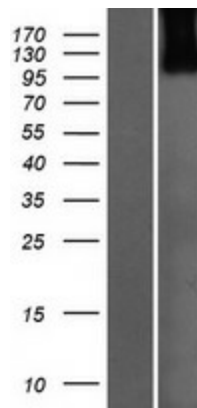
ORF Size: 2733 bp

| | |
|-------------------------------|---|
| OTI Disclaimer: | The molecular sequence of this clone aligns with the gene accession number as a point of reference only. However, individual transcript sequences of the same gene can differ through naturally occurring variations (e.g. polymorphisms), each with its own valid existence. This clone is substantially in agreement with the reference, but a complete review of all prevailing variants is recommended prior to use. More info |
| OTI Annotation: | This clone was engineered to express the complete ORF with an expression tag. Expression varies depending on the nature of the gene. |
| Components: | The ORF clone is ion-exchange column purified and shipped in a 2D barcoded Matrix tube containing 10ug of transfection-ready, dried plasmid DNA (reconstitute with 100 ul of water). |
| Reconstitution Method: | <ol style="list-style-type: none">1. Centrifuge at 5,000xg for 5min.2. Carefully open the tube and add 100ul of sterile water to dissolve the DNA.3. Close the tube and incubate for 10 minutes at room temperature.4. Briefly vortex the tube and then do a quick spin (less than 5000xg) to concentrate the liquid at the bottom.5. Store the suspended plasmid at -20°C. The DNA is stable for at least one year from date of shipping when stored at -20°C. |
| RefSeq: | NM_201624.3 |
| RefSeq Size: | 4345 bp |
| RefSeq ORF: | 2736 bp |
| Locus ID: | 23032 |
| UniProt ID: | Q8TEY7 |
| Cytogenetics: | 1p31.1 |
| Protein Families: | Druggable Genome, Protease |
| MW: | 103.1 kDa |
| Gene Summary: | This gene encodes a deubiquinating enzyme important in a variety of processes, including Slit-dependent cell migration and beta-2 adrenergic receptor signaling. The protein is negatively regulated through ubiquitination by von Hippel-Lindau tumor protein (VHL). Alternative splicing results in multiple transcript variants and protein isoforms. [provided by RefSeq, Jun 2012] |

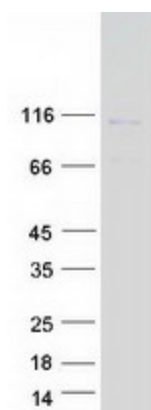
Product images:



Circular map for RC217069



Western blot validation of overexpression lysate (Cat# [LY404486]) using anti-DDK antibody (Cat# [TA50011-100]). Left: Cell lysates from untransfected HEK293T cells; Right: Cell lysates from HEK293T cells transfected with RC217069 using transfection reagent MegaTran 2.0 (Cat# [TT210002]).



Coomassie blue staining of purified USP33 protein (Cat# [TP317069]). The protein was produced from HEK293T cells transfected with USP33 cDNA clone (Cat# RC217069) using MegaTran 2.0 (Cat# [TT210002]).