

## Product datasheet for RC217066

### TMPRSS11D (NM\_004262) Human Tagged ORF Clone

#### Product data:

Product Type:	Expression Plasmids
Product Name:	TMPRSS11D (NM_004262) Human Tagged ORF Clone
Tag:	Myc-DDK
Symbol:	TMPRSS11D
Synonyms:	ASP; HAT
Mammalian Cell Selection:	Neomycin
Vector:	pCMV6-Entry (PS100001)
E. coli Selection:	Kanamycin (25 ug/mL)
ORF Nucleotide Sequence:	>RC217066 representing NM_004262 Red=Cloning site Blue=ORF Green=Tags(s)

TTTTGTAATACGACTCACTATAGGGCGGCCGGAATTCGTCGACTGGATCCGGTACCGAGGAGATCTGCC  
GCC**CGGATCGCC**

ATGTATAGGCCAGCACGTGTAACCTCGACTTCAAGATTCTGAATCCATATGTAGTATGTTTCATTGTCG  
TCGCAGGGGTAGTGATCCTGGCAGTCACCATAGCTCTACTTGTACTTTTTAGCTTTTGATCAAAAATC  
TTACTTTTATAGGAGCAGTTTTCAACTCCTAAATGTTGAATATAATAGTCAGTTAAATCCACAGCTACA  
CAGGAATACAGGACTTTGAGTGAAGAATTGAATCTCTGATTACTAAAACATTCAAAGAATCAAATTTAA  
GAAATCAGTTCATCAGAGCTCATGTTGCCAAACTGAGGCAAGATGGTAGTGGTGTGAGAGCGGATGTTGT  
CATGAAATTTCAATTCAGTAAATAACAATGGAGCATCAATGAAAAGCAGAATTGAGTCTGTTTTACGA  
CAAATGCTGAATAACTCTGGAAACCTGGAAATAAACCCCTCAACTGAGATAACATCACTTACTGACCAGG  
CTGCAGCAAATTTGGCTTATTAATGAATGTGGGCGCGTCCAGACCTAATAACATTGTCTGAGCAGAGAAT  
CCTTGGAGGCACTGAGGCTGAGGAGGGAAGCTGGCCGTGGCAAGTCAGTCTGCGGCTCAATAATGCCAC  
CACTGTGGAGGCACTGATCAATAACATGTGGATCCTGACAGCAGCTCACTGCTCAGAAGCAACTCTA  
ATCCTCGTACTGGATTGCCACGCTGGTATTTCCACAACATTTCTAACTAAGAATGAGAGTAAGAAA  
TATTTTAAATTCATAACAATTATAAATCTGCAACTCATGAAATGACATTGCACTTGTGAGACTTGAGAAC  
AGTGTACCTTTACCAAAGATATCCATAGTGTGTCTCCAGCTGTACCCAGAATATTCACCTGGCT  
CTACTGCTTATGTAACAGGATGGGGCGCTCAAGAATATGCTGGCCACACAGTTCAGAGCTAAGGCAAGG  
ACAGGTGAGAATAATAAGTAATGATGTATGTAATGCACCACATAGTTATAATGGAGCCATCTTGTCTGGA  
ATGCTGTGTGCTGGAGTACCTCAAGGTGGAGTGGACGCATGTCAGGGTACTCTGGTGGCCCACTAGTAC  
AAGAAGACTCACGGCGCTTTGGTTTATTGTGGGATAGTAAGCTGGGGAGATCAGTGTGGCCTGCCGGA  
TAAGCCAGGAGTATACTCGAGTGACAGCCTACCTTACTGGATTAGGCAACAACTGGGATC

**ACGCGT**ACGCGGCCGCTCGAGCAGAACTCATCTCAGAAGAGGATCTGGCAGCAAATGATATCTGGATT  
ACAAGGATGACGACGATAAGGTTTAA



[View online >](#)

**Protein Sequence:** >RC217066 representing NM\_004262  
Red=Cloning site Green=Tags(s)

MYRPARVTSTSRFLNPYVVCFIVVAGVILAVTIALLVYFLAFDQKSYFYRSSFQLLNVEYNSQLNSPAT  
 QEYRTL SGRIESLITKTFKESNLRNQF IRAHVAKLRQDGSVVRADVVMKFQFTRNNNGASMKSRIESVLR  
 QMLNNSGNLEINPSTEITSLTDQAAANWL INECGAGPDLITLSEQRILGGTEAEEGSWPWQVSLRLNNAH  
 HCGGSLINMWIL TAAHCFRSNSNPRDWIATSGI STTFPKLRMRVRNLIHNNYKSATHENDIALVRLN  
 SVTFTKDIHSVCLPAATQNI PPGSTAYVTGWGAQEYAGHTVPELRQGQVRIISNDVCNAPHSYNGAILSG  
 MLCAGVPQGGVDACQGDSSGGLVQEDSRRLWFIVGIVSWGDCGLPKPGVYTRVTAYLDWIRQQTGI

TRTRPLEQKLISEEDLAANDILDYKDDDDKV

**Chromatograms:** [https://cdn.origene.com/chromatograms/mg3373\\_b05.zip](https://cdn.origene.com/chromatograms/mg3373_b05.zip)

**Restriction Sites:** SgfI-MluI

**Cloning Scheme:**



\* The last codon before the Stop codon of the ORF

**ACCN:** NM\_004262

**ORF Size:** 1254 bp

**OTI Disclaimer:** The molecular sequence of this clone aligns with the gene accession number as a point of reference only. However, individual transcript sequences of the same gene can differ through naturally occurring variations (e.g. polymorphisms), each with its own valid existence. This clone is substantially in agreement with the reference, but a complete review of all prevailing variants is recommended prior to use. [More info](#)

**OTI Annotation:** This clone was engineered to express the complete ORF with an expression tag. Expression varies depending on the nature of the gene.

**Components:** The ORF clone is ion-exchange column purified and shipped in a 2D barcoded Matrix tube containing 10ug of transfection-ready, dried plasmid DNA (reconstitute with 100 ul of water).

**Reconstitution Method:**

1. Centrifuge at 5,000xg for 5min.
2. Carefully open the tube and add 100ul of sterile water to dissolve the DNA.
3. Close the tube and incubate for 10 minutes at room temperature.
4. Briefly vortex the tube and then do a quick spin (less than 5000xg) to concentrate the liquid at the bottom.
5. Store the suspended plasmid at -20°C. The DNA is stable for at least one year from date of shipping when stored at -20°C.

**RefSeq:** [NM\\_004262.3](#)

**RefSeq Size:** 2800 bp

**RefSeq ORF:** 1257 bp

**Locus ID:** 9407

**UniProt ID:** [O60235](#)

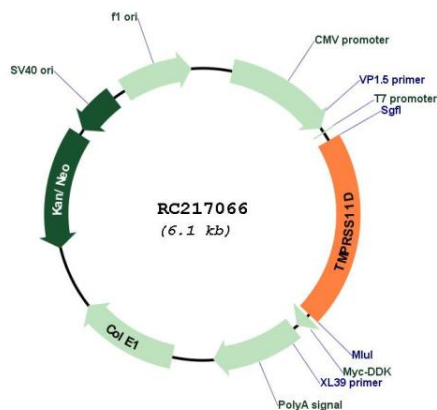
**Cytogenetics:** 4q13.2

**Protein Families:** Druggable Genome, Protease, Secreted Protein, Transmembrane

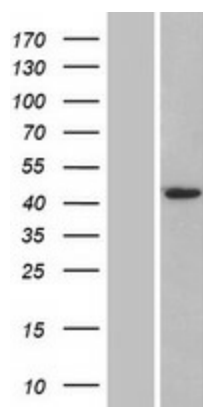
**MW:** 46.1 kDa

**Gene Summary:** This gene encodes a trypsin-like serine protease released from the submucosal serous glands onto mucous membrane. It is a type II integral membrane protein and has 29-38% identity in the sequence of the catalytic region with human hepsin, enteropeptidase, acrosin, and mast cell tryptase. The noncatalytic region has little similarity to other known proteins. This protein may play some biological role in the host defense system on the mucous membrane independently of or in cooperation with other substances in airway mucous or bronchial secretions. [provided by RefSeq, Jul 2008]

### Product images:



Circular map for RC217066



Western blot validation of overexpression lysate (Cat# [LY418104]) using anti-DDK antibody (Cat# [TA50011-100]). Left: Cell lysates from untransfected HEK293T cells; Right: Cell lysates from HEK293T cells transfected with RC217066 using transfection reagent MegaTran 2.0 (Cat# [TT210002]).