

Product datasheet for RC217065

C14orf43 (ELMSAN1) (NM_001043318) Human Tagged ORF Clone

Product data:

Product Type:	Expression Plasmids
Product Name:	C14orf43 (ELMSAN1) (NM_001043318) Human Tagged ORF Clone
Tag:	Myc-DDK
Symbol:	C14orf43
Synonyms:	C14orf43; C14orf117; c14_5541; ELMSAN1; LSR68
Mammalian Cell Selection:	Neomycin
Vector:	pCMV6-Entry (PS100001)
E. coli Selection:	Kanamycin (25 ug/mL)
ORF Nucleotide Sequence:	>RC217065 representing NM_001043318 Red=Cloning site Blue=ORF Green=Tags(s)

TTTTGTAATACGACTCACTATAGGGCGGCCGGAATTCGTCGACTGGATCCGGTACCGAGGAGATCTGCC
GCC**CGATCGCC**

ATGAACCTCCAGGCCAGCCCAAGGCTCAGAACAAGCGGAAGCGTTGCCTCTTCGGGGGCCAGGAACCAG
CTCCCAAGGAGCAGCCCCCTCCCCTGCAGCCCCCCAGCAGTCCATCAGAGTGAAGGAGGAGCAGTACCT
CGGGCAGGAGGGTCCAGGAGGGGAGTCTCCACCTCTCAGCCTGTGGAAGTCCCCCTCCTAGCAGCCTG
GCCCTGTGAAGTCTGTGGTATATGGGCTGAGCGGACCTCAGCAGCCATGCTGTCCAGCAGGTGGCT
CAGTAAAGTGGCCAACTCTGTGATGGTCCAGGGCGGGGCCGAGCGTGGAGGAGGTGGGGGTGTGAG
TGACAGCAGCTGGCAGCAGCAGCCAGGCCAGCCTCCACCCATTCAACATGGAAGTGCCACAGTCTGTCC
CTCTACAGTGCAACCAAGGGGAGCCCGCATCTGGAGTGGGAGTCCCGACTTACTATAACCACCCTGAGG
CACTGAAGCGGGAGAAAGCGGGGGGCCACAGTGGACCCTATGTGCGACCAATGATGCCACAGAAGGT
GCAGCTGGAGGTAGGGCGGCCCCAGGCACCCCTGAATTTTCCACGCAGCCAAGAAACCCCAACCCAG
TCACTGCCCTGCAACCTTCCAGCTGGCATTGCGCCACCAGGTGAACCGGAGGTCTTCCGGCAGGGCC
CACCGCCCCAAACCCGGTGGCTGCCTCCCTCCACAGAAGCAGCAGCAGCAGCAACACAGCAGCA
GCAGCAGCAGCAGCAGCCAGCCCTACCCAGATGCCGCTCTTTGAGAAGTCTATTCCATGCCGCAGCAA
CCCTCGCAGCAACCCAGGACTTTGGCTGCAGCCAGCTGGGCCACTGGGACAGTCCCACCTGGCTCACC
ACAGCATGGCACCTACCCCTTCCCCCAACCCAGATATGAACCCAGAAGTGGCAGGAGGAGGAGGAGG
GGACTCAGCCCCGAGCCAGCGCTACCTCAGGTCCAGATCCCCTTCCCCCGCCGCTCCCGCCGCTCTCT
AAGGAGGGTATCCTGCCTCCAGCGCCCTGGATGGGGCTGGCACCAGCCTGGCAGGAGGCCACTGGCA
ACCTGTTCTACATCACTGGCCCTGCAGCAGCCGCCACCTGGCTCCCTGGGGCAGCCCCATCCTGAAGC
TCTGGGATTCCCCTGGAGCTGAGGGAGTGCAGCTACTGCCTGATGGGGAGAGACTAGCACCCAATGGC
CGGGAGCGAGAGGCTCCTGCCATGGGCAGCGAGGAGGCGATGAGGGCAGTGAACACAGGGGACTGTGGC
AGGTGCTACGGGGCGGAGTGATCCAGAGCAGCGACGGAGGCGCCGGGCATCCCAGGAGGCAATTTGCT
GACCCTGGCCAGAAGGCTGTGGAGCTGGCCTCACTGCAGAATGCAAGGATGGCAGTGGTTCTGAAGAG



[View online >](#)

AAGCGGAAAAGTGTATTGGCCTCAACTACCAAGTGTGGGGTGGAGTTTTCTGAGCCTCCTTAGCCACCA
 AGCGAGCACGAGAAGACAGTGGGATGGTACCCCTCATCATCCCAGTGTCTGTGCCTGTGCGAACTGTGGA
 CCCAACTGAGGCAGCCCAGGCTGGAGGTCTTGATGAGGACGGGAAGGGTCTGAACAGAACCCTGCTGAG
 CACAAGCCATCAGTCATCGTACCCGACGGCGGTCCACCCGAATCCCCGGGACAGATGCTCAAGCTCAGG
 CAGAGGACATGAATGTCAAGTTGGAGGGGGAGCCTTCCGTGCGGAAACAAAGCAGCGGCCAGGCCCGA
 GCCCTCATCATCCCCACCAAGGCGGGCACTTTCATCGCCCTCCCGTCTACTCCAACATCACCCATAC
 CAGAGCCACTGCGCTCTCCCGTGCCTAGCTGACCACCCCTCTGAGCGGAGCTTTGAGCTACCTCCCT
 ACACGCCGCCCCCATCCTCAGCCCTGTGCGGGAAGGCTCTGGCCTCTACTTCAATGCCATCATATCAAC
 CAGCACCATCCCTGCCCTCCTCCCATCACGCCTAAGAGTGCCCATCGCACGCTGCTCCGGACTAACAGT
 GCTGAAGTAACCCCGCTGCTCTCTGTGATGGGGGAGGCCACCCAGTGAGCATCGAGCCACGGATCA
 ACGTGGGCTCCCGTTCCAGGCAGAAAATCCCTTGATGAGGGACCGTGCCTGGCAGCTGCAGATCCCCA
 CAAGGCTGACTTGGTGTGGCAGCCATGGGAGGACCTAGAGAGCAGCCGGGAGAAGCAGAGGCAAGTGAA
 GACCTGCTGACAGCCGCTGCTCCAGCATTTTCCCTGGTCTGGCACCAACCAGGAGCTGGCCCTGCACT
 GTCTGCACGAATCCAGAGGAGACATCCTGAAACGCTGAATAAGCTGCTGCTGAAGAAGCCCTGCGGCC
 CCACAACCATCCGCTGGCAACTATCACTACACAGGCTCTGACCAGTGGAAAGATGGCCGAGAGGAAGCTG
 TTCAACAAAGGCATTGCCATCTACAAGAAGGATTTCTTCTGGTGCAAGAGCTGATCCAGACCAAGACCG
 TGGCCAGTGCCTGGAGTTCTACTACACCTACAAGAAGCAGGTGAAAATCGGCCGCAATGGGACTCTAAC
 CTTTGGGGATGTGGATACGAGCGATGAGAAGTCGGCCAGGAAGAGGTTGAAGTGGATATTAAGACTTCC
 CAAAAGTCCCAAGGGTGCCTTCCCAGAAGAGAGTCCCAAGTGAAGAGAGGCTGGAGCCCAAGAGGG
 AGGTGAAGGAGCCAGGAAGGAGGGGGAGGAGGAGGTGCCAGAGATCCAAGAGAAGGAGGAGCAGGAAGA
 GGGCGGAGAGCGCAGCAGGCGGGCAGCGGACGTCAAAGCCACGCAGACACTACAGGCCAATGAGTCGGCC
 AGTGACATCCTCATCCTCCGAGCCACGAGTCCAACGCCCTGGGTCTGCCGGTGGCCAGGCCCTCGGAGA
 AGCCAAGGGAAGGACAGGGAAGTCACGAAGGGCACTACCTTTTTTCAGAGAAGAAGAAAAAACAGAGAC
 ATTCAGTAAGACCCAGAATCAGGAGAACACTTCCCCTGTAAAAAATGTGGCAGG

ACGCGTACGCGGCCGCTCGAGCAGAACTCATCTCAGAAGAGGATCTGGCAGCAATGATATCCTGGATT
 ACAAGGATGACGACGATAAGGTTTAA

Protein Sequence:

>RC217065 representing NM_001043318

Red=Cloning site Green=Tags(s)

MNLQAQPKAQNKRRKCLFGGQEPAPKEQPPLQPPQQSIRVKEEQYLGHGPGGAVSTSQPVELPPSSSL
 ALLNSVYGPERSAAMLSQQVASVKWPNVSVMAPGRGPERGGGGVSDSSWQQQPGQPPHSTWNCHSL
 LYSATKGSPPHGVVPTYYNHPEALKREKAGGPQLDRYVVRPMPQKVQLEVGRPQAPLNSFHAACKPPNQ
 SLPLQPFQLAFGHQVNRQVFRQPPPPNPVAAFPPKQQQQQQPQQQQQQAALPQMPLFENFYSMPQQ
 PSQQPQDFGLQPAGPLGQSHLAHHSMPYFPFPPNPDMPNPELRKALLQDSAPQPALPQVQIPFRRSRRLS
 KEGILPPSALDGAGTQPGQEATGNLFLHHWPLQQPPPGSLGQPHPEALGFLELRESQLLPDGERLAPNG
 REREAPAMGSEEGMRAVSTGDCGQVLRGGVIQSTRRRRRASQEANLLTLAQKAVELASLQNAKDGSGSEE
 KRKSVLASTTKCGVEFSEPSLATKRAREDSGMVPLIIPVSVVVRTVDPTAAQAGGLDEDGKGPEQNP
 HKPSVIVTRRRSTRIPGTDAQAQAEDMNVKLEGEPSVRKPKQRPRPEPLIIPTKAGTFIAPPVYSNITPY
 QSHLRSPVRLADHPSERSFELPPYTPPPILSPVREGSGLYFNAIISTSTIPAPPPITPKSAHRTLLRTNS
 AEVTPPVLSVMGEATPVSEPRINVGSRFQAEIPLMRDRALAAADPHKADLVWQPWEDLESSREKQRQVE
 DLLTAACSSIFPGAGTNQELALHCLHESRGLDILETLNKLKPLRPHNHPLATYHYTGSDQWMAERKL
 FNKGIAIYKDFLQKLIQTKVAQCVEFYTYKQVKIGRNGTLTFGDVDTSEKSAQEEVEVDIKTS
 QKFPRVPLPRRESPSEERLEPKREVKEPRKEGEEVEPEIQEKEEQEGRERSRRAAVKATQTLQANESA
 SDILILRSHE SNAPGSAGQASEKPREGTKSRRALPFSEKKTETFTSKTQNTFPCKKCGR

TRTRPLEQKLI SEEDLAANDILDYKDDDDKV

Chromatograms:

https://cdn.origene.com/chromatograms/mk6167_h03.zip

Restriction Sites:

Sgfl-Mlul

Cloning Scheme:


ACCN: NM_001043318

ORF Size: 3135 bp

OTI Disclaimer: The molecular sequence of this clone aligns with the gene accession number as a point of reference only. However, individual transcript sequences of the same gene can differ through naturally occurring variations (e.g. polymorphisms), each with its own valid existence. This clone is substantially in agreement with the reference, but a complete review of all prevailing variants is recommended prior to use. [More info](#)

OTI Annotation: This clone was engineered to express the complete ORF with an expression tag. Expression varies depending on the nature of the gene.

Components: The ORF clone is ion-exchange column purified and shipped in a 2D barcoded Matrix tube containing 10ug of transfection-ready, dried plasmid DNA (reconstitute with 100 ul of water).

- Reconstitution Method:**
1. Centrifuge at 5,000xg for 5min.
 2. Carefully open the tube and add 100ul of sterile water to dissolve the DNA.
 3. Close the tube and incubate for 10 minutes at room temperature.
 4. Briefly vortex the tube and then do a quick spin (less than 5000xg) to concentrate the liquid at the bottom.
 5. Store the suspended plasmid at -20°C. The DNA is stable for at least one year from date of shipping when stored at -20°C.

RefSeq: [NM_001043318.3](#)

RefSeq Size: 7656 bp

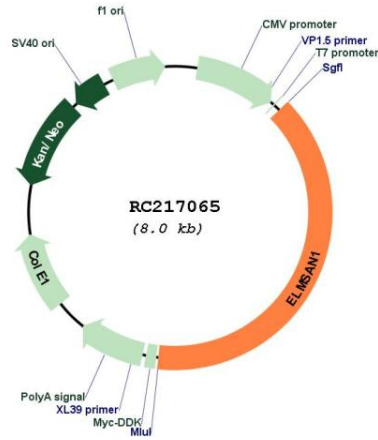
RefSeq ORF: 3138 bp

Locus ID: 91748

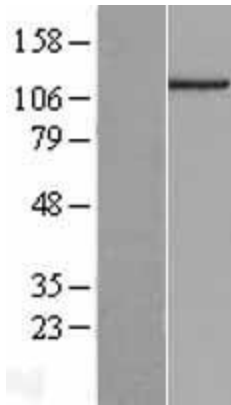
UniProt ID: [Q6PJG2](#)

Cytogenetics: 14q24.3
 MW: 114.8 kDa

Product images:



Circular map for RC217065



Western blot validation of overexpression lysate (Cat# [LY420815]) using anti-DDK antibody (Cat# [TA50011-100]). Left: Cell lysates from untransfected HEK293T cells; Right: Cell lysates from HEK293T cells transfected with RC217065 using transfection reagent MegaTran 2.0 (Cat# [TT210002]).