

Product datasheet for RC217061

TBC1D9B (NM_015043) Human Tagged ORF Clone

Product data:

Product Type:	Expression Plasmids
Product Name:	TBC1D9B (NM_015043) Human Tagged ORF Clone
Tag:	Myc-DDK
Symbol:	TBC1D9B
Synonyms:	GRAMD9B
Mammalian Cell Selection:	Neomycin
Vector:	pCMV6-Entry (PS100001)
E. coli Selection:	Kanamycin (25 ug/mL)
ORF Nucleotide Sequence:	>RC217061 ORF sequence Red=Cloning site Blue=ORF Green=Tags(s)

TTTTGTAATACGACTCACTATAGGGCGGCCGGGAATTCGTCGACTGGATCCGGTACCGAGGAGATCTGCC
GCC**CGATCGCC**

ATGTGGCTGAGCCCGGAGGAGGTGCTGGTGGCCAATGCGCTGTGGGTGACGGAGCGGGCCAACCCCTTCT
TCGTGCTGCAGCGACGCCGGGGCCACGGCAGGGGCGGGCCCTTACGGGTCTTCTCGTGGGCACCCTGGA
CGTGGTGTGACTCCAGTGCCCGGTGGCCCTTACCGCATCCTGCACCAGACCCAGGACTCCCAGGTC
TACTGGACAGTGGCGTGTGGTTCTTCCCGCAAAGAGATCACAAAACACTGGGAATGGCTGGAAAATAACT
TGCTCCAGACACTGTCCATCTTCGACAGTGAGGAAGATATCACCACCTTCGTCAAGGGCAAGATACACGG
AATCATCGCAGAAGAGAACAAGAACCTGCAGCCCCAGGGAGACGAGGACCCCGGAAGTTCAAGGAGGCT
GAGCTGAAGATGCGGAAGCAGTTTGGGATGCCTGAGGGCGAGAAGCTGGTGAATTACTACTCCTGCAGCT
ACTGGAAGGGCCGCTGCCCGGCGAGGGCTGGCTGTACCTGACGGTCAACCACCTGTGCTTCTACTCCTT
CCTGCTGGGGAAGGAAGTGAGCCTCGTGGTGCAGTGGGTGGACATAACCGCTCTGGAGAAGAAGCCACC
CTGCTCTCCCGAGAGCATCCGTGTGGACACCCGCGACCAGGAGCTCTTCTTCCATGTTCTCAACA
TCGGCGAGACCTCAAGCTCATGGAGCAGTTGGCCAACCTGGCCATGCGGCAGCTGCTGGACAGCGAGGG
CTTCTTGAGGACAAGGCCCTGCCTAGGCCATCCGGCCACACAGGAACATCTCAGCCCTGAAGCGAGAC
CTGGACGCCCGAGCCAAGAATGAGTGTACCGAGCCAGTTCCGGCTGCCAGGATGAGCGGCTAGACG
GCCACACAAGCTGCACCCTGTGGACGCCGTTCAACAAGCTGCACATCCCTGGCCAGATGTTATCTCCAA
CAACTACATCTGCTTCGCCAGCAAGGAGGAGGACGCTTGCCACCTCATCATACCCCTGAGGGAGGTGACC
ATTGTCGAAAAAGCTGACAGCTCCAGCGTGTGCCAGCCCCCTGTCCATCAGCACAAAAGCAAAATGA
CATTCTGTTTGCCAACCTGAAAGACCGTGATTTCTTGGTGCAGAGGATCTCTGACTTCTCCAGAAAAC
ACCATCCAAGCAGCCAGGAGTATCGGGAGCAGGAAAGCCAGTGTGTGGACCCTAGCACAGAGTCTTCC
CCAGCTCCTCAGGAGGGTGGAGCAGCCGCCAGCCAGCCCTCCCCCTCAGCAGCCGCCAGAGCTTCT
GTGGCAGGAGGGCCAACCGCATCCAGGGCCTGCTGAAGCTTCCAGAAAACCTGCCCATGGAGGA
CCTTGGAGCCAAGGGGCAAGGAGAAGATGAAAGAGGAGTCATGCCACATCCACTTCTCGAGTACGGG



CGTGGCGTGTGCATGTACCGCACAGCCAAGACGCGGGCACTGGTCTGAAGGGTATCCCTGAGAGCCTCC
GGGAGAGCTGTGGCTCCTTTCTCCGGGGCTGGAATGAGATGGTGACTCACCCGGGACTATGCTGA
GCTGGTGGAGAAGTCCACCGGAAGTACAGCCTGGCCACAGAGGAGATCGAGCGAGACCTGCACCCTCC
ATGCCCGAGCACCTGCCTTCCAGAACGAGCTGGGGATTGCTGCCCTCCGGCGGGTGTGACTGCCTATG
CCTTCCGAAACCCACCATCGGCTACTGCCAGGCAATGAACATCGTGACCTCGGTGCTCCTGCTCTATGG
CAGTGAGGAGGAGGCCTTCTGGCTCCTGGTGGCCCTGTGCGAGCGCATGCTGCCGACTACTACAACACC
AGGGTGGTGGGAGCCCTGGTGGACCAAGGCATCTTCAAGAGCTCACGAGAGACTTCTGCCGACGCTCT
CGGAGAAGATGCAGGACCTGGGGGTGATCTCCAGCATCTCGCTGTCTGGTTCTTGACCCTTCTCCAG
CGTCATGCCCTTTCGAGAGCGCCGTGGTCACTCGTCGACTGCTTTTTCTATGAGGGCATCAAGTGATCCTG
CAGGTGGCCCTGGCCGTCTGGACGCCAACATGGAGCAGCTGCTGGGCTGCAGCGACGAGGGCGAGGCCA
TGACCATGCTGGGAGATACCTGGATAATGTGGTCAACAAGCAGAGTGTCTCTCCTATCCCGCACCT
CCGTGCCCTTGTGAGCAGCAGCGATGACCCCCCTGCAGAGGTGGACATCTTTGAGCTCCTGAAAGTGTCC
TATGAGAAATTCAGCAGCCTGAGGGCCGAGACATTGAGCAGATGCGGTTTAAACAGAGGCTGAAAGTGA
TCCAGTCTTGGAGGACCGCCAAGAGGAGTGGTCCGAGCTATACCTGTGGACATTGGTTTCTCCAT
TGAAGAGCTGGAGACCTTTACATGGTGTAAAGGCCAAGCACCTGGCTAGCCAGTACTGGGGGTGCAGC
CGACAATGGCCGGCCGTCCGGACCCAGCCTGCCCTACCTGGAGCAGTACCGGATTGATGCCAGCCAGT
TCCGGGAACCTTTGCCAGCCTGACACCCTGGGCTGTGGCTCCACACACCTCTGCTGGCAGGGCGCAT
GTTCAGGCTCCTGGACGAAAACAAGGACTCGTGATCAACTTCAAGGAGTTCGTGACAGGGATGAGCGGG
ATGTACCACGGGACCTGACAGAGAAGCTCAAGGTGCTCTACAAGCTACACCTTCCCCAGCTCTGAGCC
CAGAGGAAGCCGAGTCAAGCCTGGAGGGCGCCATTATTTACAGAGGACAGCTCCTCAGAAGCACTACC
ACAGGAAGAGCAAGAAGGAAGTGAAGTGAAGTGAAGAGAGAGGAGAGGAGAAGGGGACCAGCTCTCCGACTAT
CGGCACTACCTTCAATGTGGCCAAAGGAGAAAGAGGCTCAGAAGGAGACGATTAAGGATCTTCCCAAGA
TGAACCAGGAGCAGTTCATTGAGCTGTGCAAGACGCTTTACAACATGTTTCAGTGAAGACCCCATGGAGCA
GGACCTGTACCAGCCATCGCCACCGTGGCCAGCCTCCTGCTCCGCATCGGAGAGGTGGGAAGAAGTTC
TCAGCCCGCACAGGCAGGAAGCCAGGGACTGTGCCACTGAGGAGGACGAGCCACCAGCACCCGAAGTGC
ATCAGGACGCAGCCAGGGAGCTTCAAGCCAGCTGCAGGAGACCCCAAGCCAAAGCAGGCGGAGACAC
ACACCTCGAAAAGCCCCACAGGAGAGCCAGGTGGTGGTGGAGGGGGCAGCGGCAGGGACAGGGCTCA
CCCTCCCAGTGTCTGACGATGAAACCAAGACGACATGTCCATGTCTCCTACTCGGTGGTACGCA
CGGGCTCCCTGCAATGTGAAGACCTTGCAGACGACACGGTGTGGTGGGCGGGGAGGCCTGCAGCCCCAC
AGCGGCATCGGCGGCACCGTCGACACCGACTGGTGCATCTCCTTTGAGCAGATCCTGGCCTCCATCCTG
ACGGAGTCCGTGCTGGTGAACCTTTTGAAGAGAGTGGACATTGGACTCAAGATCAAGGACCAAAAGA
AAGTGGAGAGACAGTTACAGACCCAGTACCATGAGCAGCCTGGAGTTCCGGC

AGCGGACCGACGCGTACGCGCCGCTCGAGCAGAAACTCATCTCAGAAGAGGATCTGGCAGCAAATGATATCC
TGGATTACAAGGATGACGACGATAAGGTTAA

Protein Sequence: >RC217061 protein sequence
 Red=Cloning site Green=Tags(s)

```

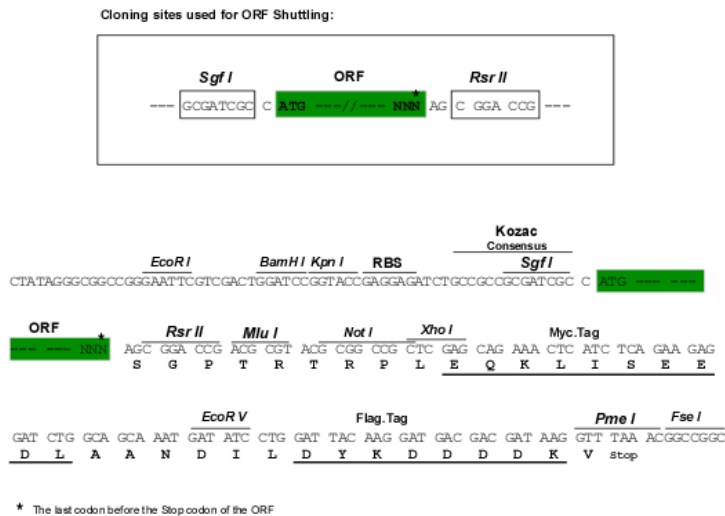
MWLSPEEVLVANLWVTERANPFFVLQRRRGHGRGGGLTGLLVGTLDDVLDSSARVAPYRILHQTQDSQV
YWTVACGSSRKEITKHWLENNLLQTL SIFDSEEDITTFVKGKIHGIIAEENKNLQPQGEDPGKFKEA
ELKMRKQFGMPEGEKLVNYYSCSYWKGRVPRQGWLYLTVNHLCFYSFLLGKEVSLVVQWVDITRLEKNAT
LLFPESIRVDTRDQELFFSMFLNIGETFKLMQELANLAMRQLLDSEGFLEDKALPRPIRPHRNISALKRD
LDARAKNECYRATFRLPRDERLDGHTSCTLWTFPNKLHIPGQMFISNNYICFASKEEDACHLIIPLREVT
IVEKADSSSVLPSPSISTKSKMTFLFANLKDRDFLVQRISDFLQKTPSKQPGSIGSRKASVVDPSTESS
PAPQEGSEQPASPASPLSSRQSFCAQEAPTASQGLLKLKFKNSPMEDLGAKGAKEKMEESWHIHFYEYG
RGVCMYRTAKTRALVLKGIPESLRGELWLLFSGAWNEMVTHPGYAELEKSTGKYSLATETEEIERDLHRS
MPEHPAFQNELGIAALRRVLTAYAFRNPTIGYQAMNIVTSVLLLYGSEEEAFWLLVALCERMLPDYNT
RVVVALVDQGIFFELTRDFLPQLSEKMDLGVISISLSWFLTLFLSVMPPFESAVVIVDCFFYEGIKVIL
QVALAVLDANMEQLLGCSDGEAMTMLGRYLDNVVNKQSVSPPIPHLRALLSSSDPPAEVDIFELLKVS
YEKFSRLRAEDIEQMRFKQRLKVIQSL EDTAKRSVVRAIPVDIGFSIEELEDLYMVFKAKHLASQYWGCS
RTMAGRRDPSLPYLEQYRIDASQFREL FASLTPWACGSHTPLL AGRMFRLLDENKDSLINFKEFVTGMSG
MYHGDLEKLVLYKHLPPALSPPEEAESAEEAHHYFTEDSSSEALPQEEQEGSGSEEREGEKGTSPPDY
RHYLRMWAKEKEAQKETIKDLPKMNQE QFIELCKTLNMFSEDPMEQDLYHAIATVASLLLRIGEVGKFK
SARTGRKPRDCATEEDEPPAPELHQDAARELQPPAAGDPQAKAGGDTHLGKAPQESQVVVEGGSGEGQGS
PSQLLSDDETKDDMSMSSYSVSTGSLQCEDLADDTVLVGGEACSPTARIGGTVDTDWCISFEQILASIL
TESVLVNF FEKRVDIGLKI KDQKKVERQFSTASDHEQPGVSG
  
```

SGPTRRPLEQKLI SEEDLAANDILDYKDDDDKV

Chromatograms: https://cdn.origene.com/chromatograms/mk6624_d05.zip

Restriction Sites: SgfI-RsrII

Cloning Scheme:

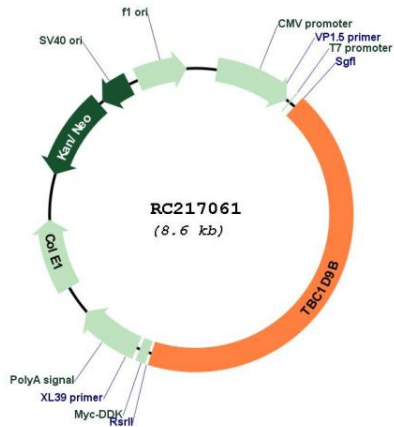


ACCN: NM_015043

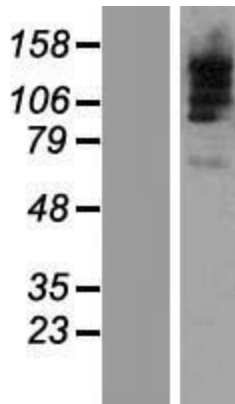
ORF Size: 3696 bp

OTI Disclaimer:	The molecular sequence of this clone aligns with the gene accession number as a point of reference only. However, individual transcript sequences of the same gene can differ through naturally occurring variations (e.g. polymorphisms), each with its own valid existence. This clone is substantially in agreement with the reference, but a complete review of all prevailing variants is recommended prior to use. More info
OTI Annotation:	This clone was engineered to express the complete ORF with an expression tag. Expression varies depending on the nature of the gene.
Components:	The ORF clone is ion-exchange column purified and shipped in a 2D barcoded Matrix tube containing 10ug of transfection-ready, dried plasmid DNA (reconstitute with 100 ul of water).
Reconstitution Method:	<ol style="list-style-type: none">1. Centrifuge at 5,000xg for 5min.2. Carefully open the tube and add 100ul of sterile water to dissolve the DNA.3. Close the tube and incubate for 10 minutes at room temperature.4. Briefly vortex the tube and then do a quick spin (less than 5000xg) to concentrate the liquid at the bottom.5. Store the suspended plasmid at -20°C. The DNA is stable for at least one year from date of shipping when stored at -20°C.
RefSeq:	NM_015043.3 , NP_055858.2
RefSeq Size:	5138 bp
RefSeq ORF:	3702 bp
Locus ID:	23061
UniProt ID:	Q66K14
Cytogenetics:	5q35.3
Domains:	EFh
MW:	138.5 kDa
Gene Summary:	May act as a GTPase-activating protein for Rab family protein(s).[UniProtKB/Swiss-Prot Function]

Product images:



Circular map for RC217061



Western blot validation of overexpression lysate (Cat# [LY414845]) using anti-DDK antibody (Cat# [TA50011-100]). Left: Cell lysates from untransfected HEK293T cells; Right: Cell lysates from HEK293T cells transfected with RC217061 using transfection reagent MegaTran 2.0 (Cat# [TT210002]).