

## Product datasheet for RC217045

### GPR42P (NM\_005305) Human Tagged ORF Clone

#### Product data:

Product Type:	Expression Plasmids
Product Name:	GPR42P (NM_005305) Human Tagged ORF Clone
Tag:	Myc-DDK
Symbol:	GPR42P
Synonyms:	FFAR1L, GPR41L
Mammalian Cell Selection:	Neomycin
Vector:	pCMV6-Entry (PS100001)
E. coli Selection:	Kanamycin (25 ug/mL)
ORF Nucleotide Sequence:	>RC217045 ORF sequence Red=Cloning site Blue=ORF Green=Tags(s)

TTTTGTAATACGACTCACTATAGGGCGGCCGGAATTCGTCGACTGGATCCGGTACCGAGGAGATCTGCC  
GCC**CGATCGCC**

ATGGATACAGGCCCGACCAGTCTACTTCTCCGGCAATCACTGGTTCGTCTTCTCGGTGTACCTTCTCA  
CTTTCTGGTGGGGCTCCCCCTCAACCTGCTGGCCCTGGTGGTCTTCGTGGGCAAGCTGCAGCGCCGCC  
GGTGGCCGTGGACGTGCTCCTGCTCAACCTGACCGCTCGGACCTGCTCCTGCTGCTGTTCTGCCTTC  
CGCATGGTGGAGGAGCCAATGGCATGCACTGGCCCTGCCCTTCATCCTCTGCCACTCTCTGGATTCA  
TCTTCTCACCACCATCTATCTCACCGCCCTTCTCCTGGCAGCTGTGAGCATTGAACGCTTCTGAGTGT  
GGCCACCCACTGTGTTACAAGACCCGGCCGAGGCTGGGGCAGGCAGGCTGTTGAGTGTGGCCTGCTGG  
CTGTTGGCCTCTGCTCACTGCAGCGTGGTCTACGTATAGAAATTCAGGGGACATCTCCACAGCCAGG  
GCACCAATGGGACCTGCTACCTGGAGTTCGGAAGGACCAGCTAGCCATCCTCCTGCCCGTGGCGGTGGA  
GATGGCTGTGGTCTCTTGTGGTCCCGCTGATCATCACCAGCTACTGCTACAGCCCGCTGGTGTGGATC  
CTCGGCAGAGGGGGCAGCCACCGCCGCGCAGAGGAGGGTGGCGGGCTGTTGGCGGCCACGCTGCTCACT  
TCCTTGTCTGCTTGGGCCCTACAACGTGTCCCATGTCGTGGGCTATATCTGCGGTGAAAGCCGGCGTG  
GAGGATCTACGTGACGCTTCTCAGCACCTGAACCTCTGTGTCGACCCCTTGTCTACTACTTCTCTCTCC  
TCCGGGTTCCAAGCCGACTTTCATGAGCTGCTGAGGAGTGTGTGGGCTCTGGGCCAGTGGCAGCAGG  
AGAGCAGCATGGAGCTGAAGGAGCAGAAGGGAGGGAGGAGCAGAGAGCGGACCGACAGCTGAAAGAAA  
GACCAGTGAACACTCACAGGGCTGTGAACTGGTGGCCAGGTGGCCTGTGCTGAAAGC

**ACGCGT**ACGCGGCCGCTCGAGCAGAACTCATCTCAGAAGAGGATCTGGCAGCAATGATATCCTGGATT  
ACAAGGATGACGACGATAAGGTTTAA



[View online »](#)

**Protein Sequence:** >RC217045 protein sequence  
Red=Cloning site Green=Tags(s)

MDTGPDQSYFSGNHWFVFSVYLLTFLVGLPLNLLALVVFVGLQRRPVAVDVLNLTASDLLLFLPF  
 RMVEAANGMHWLPLFILCPLSGFIFFTTIYLTALFLAAVSIERFLSVAHPLWYKTRPRLGQAGLVSVACW  
 LLASAHCSVVYVIEFSGDISHSQGTNGTCYLEFRKQDLAILLPVRLEMAVVLVFPVLIITSYCYSRLVWI  
 LGRGGSHRRQRRVAGLLAATLLNFLVCFGPYNVSHVVGYICGESPAWRIYVTLSTLNSCVDPFVYVYFSS  
 SGFQADFHELLRRLCGLWGQWQEQESSMELKEQKGGEEQRADRP AERKTSEHSQGC GTGGQVACAES

TRTRPLEQKLISEEDLAANDILDYKDDDDKV

**Chromatograms:** [https://cdn.origene.com/chromatograms/mk6337\\_a05.zip](https://cdn.origene.com/chromatograms/mk6337_a05.zip)

**Restriction Sites:** SgfI-MluI

**Cloning Scheme:**



**ACCN:** NM\_005305

**ORF Size:** 1038 bp

**OTI Disclaimer:** The molecular sequence of this clone aligns with the gene accession number as a point of reference only. However, individual transcript sequences of the same gene can differ through naturally occurring variations (e.g. polymorphisms), each with its own valid existence. This clone is substantially in agreement with the reference, but a complete review of all prevailing variants is recommended prior to use. [More info](#)

**OTI Annotation:** This clone was engineered to express the complete ORF with an expression tag. Expression varies depending on the nature of the gene.

**Components:** The ORF clone is ion-exchange column purified and shipped in a 2D barcoded Matrix tube containing 10ug of transfection-ready, dried plasmid DNA (reconstitute with 100 ul of water).

**Reconstitution Method:**

1. Centrifuge at 5,000xg for 5min.
2. Carefully open the tube and add 100ul of sterile water to dissolve the DNA.
3. Close the tube and incubate for 10 minutes at room temperature.
4. Briefly vortex the tube and then do a quick spin (less than 5000xg) to concentrate the liquid at the bottom.
5. Store the suspended plasmid at -20°C. The DNA is stable for at least one year from date of shipping when stored at -20°C.

**RefSeq:** [NM\\_005305.1](#), [NP\\_005296.1](#)

**RefSeq Size:** 1041 bp

**RefSeq ORF:** 1040 bp

**Locus ID:** 2866

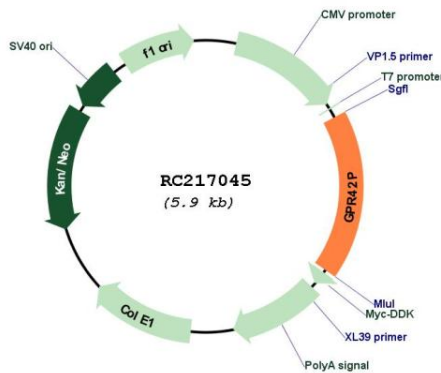
**Cytogenetics:** 19q13.12

**Protein Families:** Druggable Genome, GPCR, Transmembrane

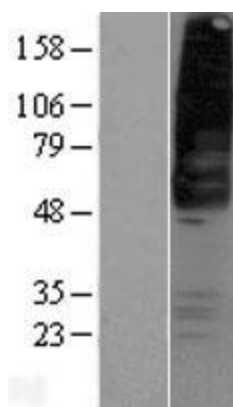
**MW:** 38.6 kDa

**Gene Summary:** Probable G protein-coupled receptor that may be activated by a major product of dietary fiber digestion, the short chain fatty acids (SCFAs), and that may play a role in the regulation of whole-body energy homeostasis and/or in intestinal immunity.[UniProtKB/Swiss-Prot Function]

**Product images:**



Circular map for RC217045



Western blot validation of overexpression lysate (Cat# [LY417392]) using anti-DDK antibody (Cat# [TA50011-100]). Left: Cell lysates from untransfected HEK293T cells; Right: Cell lysates from HEK293T cells transfected with RC217045 using transfection reagent MegaTran 2.0 (Cat# [TT210002]).