

Product datasheet for RC217044

CREM (NM_182719) Human Tagged ORF Clone

Product data:

Product Type:	Expression Plasmids
Product Name:	CREM (NM_182719) Human Tagged ORF Clone
Tag:	Myc-DDK
Symbol:	CREM
Synonyms:	CREM-2; hCREM-2; ICER
Mammalian Cell Selection:	Neomycin
Vector:	pCMV6-Entry (PS100001)
E. coli Selection:	Kanamycin (25 ug/mL)
ORF Nucleotide Sequence:	>RC217044 representing NM_182719 Red=Cloning site Blue=ORF Green=Tags(s)

TTTTGTAATACGACTCACTATAGGGCGGCCGGAATTCGTCGACTGGATCCGGTACCGAGGAGATCTGCC
 GCCCGCATCGCC

ATGGCTGTAAGTGGAGATGACACAGATGAGGAACTGAACTTGCCCCAAGTCACATGGCTGCTGCCACTG
 GTGACATGCCAATTACCAGATCCGAGCTCCTACTGCTGCTTGCCACAGGGAGTGGTATGGCTGCATC
 GCCCGGAAGTTTGACAGTCCCCAGCAGCTGGCAGAAGAAGCAACACGCAACGAGAGCTGAGGCTAATG
 AAAACAGGGAAGCTGCCAAGAATGTCGACGTCGAAAGAAAGAATATGTAAATGTCTGGAGAGCCGAG
 TTGCACTGCTGGAAGTCCAGAACAGAAGCTTATAGAGGAAGTGAACCTTGAAGACATTGTCTCC
 CAAACAGATTAC

ACGCGTACGCGGCCGCTCGAGCAGAACTCATCTCAGAAGAGGATCTGGCAGCAATGATATCCTGGATT
 ACAAGGATGACGACGATAAGGTTTAA

Protein Sequence:	>RC217044 representing NM_182719 Red=Cloning site Green=Tags(s)
	MAVTGDDTDEETELAPSHMAAATGDMPTYQIRAPTAALPQGVVMAASPGSLHSPQQLAEEATRKRELRML KNREAAKECRRRKKEYVKLESRVAVLEVQNKLIIELETLDKIDICSPKTDY

TRTRPLEQKLISEEDLAANDILDYKDDDDKV

Chromatograms: https://cdn.origene.com/chromatograms/mk6114_c10.zip

Restriction Sites: SgfI-MluI



[View online »](#)

Cloning Scheme:


ACCN: NM_182719

ORF Size: 363 bp

OTI Disclaimer: The molecular sequence of this clone aligns with the gene accession number as a point of reference only. However, individual transcript sequences of the same gene can differ through naturally occurring variations (e.g. polymorphisms), each with its own valid existence. This clone is substantially in agreement with the reference, but a complete review of all prevailing variants is recommended prior to use. [More info](#)

OTI Annotation: This clone was engineered to express the complete ORF with an expression tag. Expression varies depending on the nature of the gene.

Components: The ORF clone is ion-exchange column purified and shipped in a 2D barcoded Matrix tube containing 10ug of transfection-ready, dried plasmid DNA (reconstitute with 100 ul of water).

Reconstitution Method:

1. Centrifuge at 5,000xg for 5min.
2. Carefully open the tube and add 100ul of sterile water to dissolve the DNA.
3. Close the tube and incubate for 10 minutes at room temperature.
4. Briefly vortex the tube and then do a quick spin (less than 5000xg) to concentrate the liquid at the bottom.
5. Store the suspended plasmid at -20°C. The DNA is stable for at least one year from date of shipping when stored at -20°C.

Note: Plasmids are not sterile. For experiments where strict sterility is required, filtration with 0.22um filter is required.

RefSeq: [NM_182719.2](#)

RefSeq Size: 1589 bp

RefSeq ORF: 366 bp

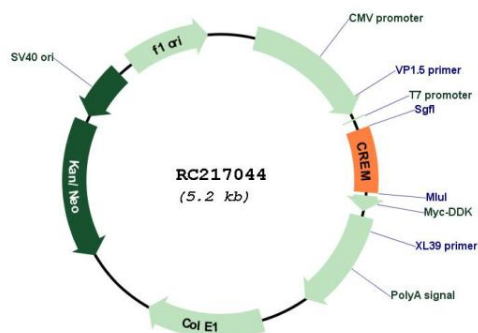
Locus ID: 1390
 UniProt ID: [Q03060](#)
 Cytogenetics: 10p11.21

Protein Families: Druggable Genome, Transcription Factors

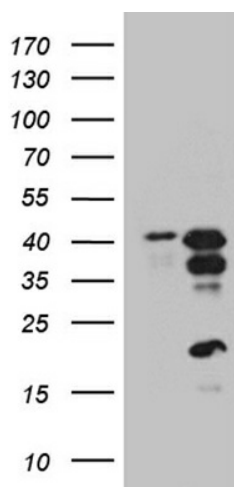
MW: 13.3 kDa

Gene Summary: This gene encodes a bZIP transcription factor that binds to the cAMP responsive element found in many viral and cellular promoters. It is an important component of cAMP-mediated signal transduction during the spermatogenic cycle, as well as other complex processes. Alternative promoter and translation initiation site usage allows this gene to exert spatial and temporal specificity to cAMP responsiveness. Multiple alternatively spliced transcript variants encoding several different isoforms have been found for this gene, with some of them functioning as activators and some as repressors of transcription. [provided by RefSeq, Jul 2008]

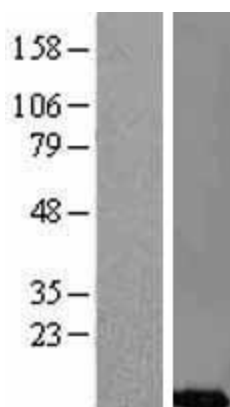
Product images:



Circular map for RC217044



HEK293T cells were transfected with the pCMV6-ENTRY control (Cat# [PS100001], Left lane) or pCMV6-ENTRY CREM (Cat# RC217044, Right lane) cDNA for 48 hrs and lysed. Equivalent amounts of cell lysates (5 ug per lane) were separated by SDS-PAGE and immunoblotted with anti-CREM (Cat# [TA812055]). Positive lysates [LY403643] (100ug) and [LC403643] (20ug) can be purchased separately from OriGene.



Western blot validation of overexpression lysate (Cat# [LY403643]) using anti-DDK antibody (Cat# [TA50011-100]). Left: Cell lysates from untransfected HEK293T cells; Right: Cell lysates from HEK293T cells transfected with RC217044 using transfection reagent MegaTran 2.0 (Cat# [TT210002]).