

## Product datasheet for **RC217040**

### **CLCN4 (NM\_001830) Human Tagged ORF Clone**

#### **Product data:**

Product Type:	Expression Plasmids
Product Name:	CLCN4 (NM_001830) Human Tagged ORF Clone
Tag:	Myc-DDK
Symbol:	CLCN4
Synonyms:	CIC-4; CIC-4A; CLC4; MRX15; MRX49; MRXSRC
Mammalian Cell Selection:	Neomycin
Vector:	pCMV6-Entry (PS100001)
E. coli Selection:	Kanamycin (25 ug/mL)



[View online »](#)

**ORF Nucleotide Sequence:**

>RC217040 representing NM\_001830  
 Red=Cloning site Blue=ORF Green=Tags(s)

TTTTGTAATACGACTCACTATAGGGCGGCCGGAATTCGTCGACTGGATCCGGTACCGAGGAGATCTGCC  
 GCC**CGGATCGCC**

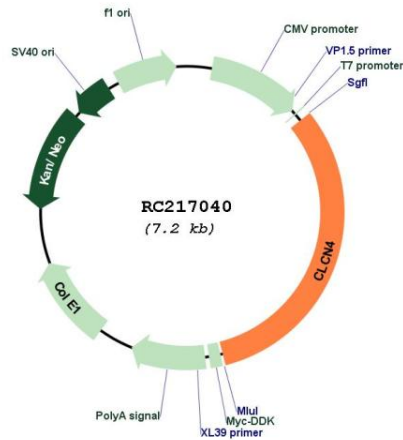
ATGGTCAATGCGGGAGCGATGAGTGGCTCTGAAACCTGATGGATTTCTCGATGAGCCGTTCCCTGATG  
 TGGGGACGTATGAGGACTTCCACACCATCGACTGGCTAAGGGAAAAGTCACGGGACACCGACAGACACAG  
 GAAGATACCAGCAAGAGCAAGGAGTCCATATGGGAGTTCATCAAGAGCCTGCTGGATGCCTGGTCGGGA  
 TGGGTGGTGTGCTCATCGCCTGCTGGCGGCACCTGGCTGGGGTTCATCGATCTCGCCGTGGACT  
 GGATGACGGACCTGAAGGAGGGGTCTGCCTGTCTGCCTTCTGGTATAGCCATGAGCAGTGTGCTGGAC  
 TTCTAACGAGACCACTTTTGAGGACAGAGACAAGTGTCCCTGTGGCAGAAATGGTCGGAGCTGCTGGTG  
 AATCAGTCAGAGGGTCCAGTGTACATTCTGAATTACTTAATGTACATCCTATGGGCGCTGCTGTTTG  
 CTTTTGGCTGTCTCCCTGGTGTGTATTTGCACCATATGCCTGTGGCTCTGGCATAACAGAGATAAA  
 GACCATTTGAGCGGCTTATCATCAGGGGCTACTTGGGAAGTGGACCCTGCTAATCAAGACAGTCACG  
 CTGGTGTGGTAGTGTCCCTCCGGTCTGAGCCTTGGGAAGGAAGGGCCGCTAGTGCACGTGGCTTGTGTCT  
 GTGGCAACTTCTTCAGCAGCCTTTCTCCAAGTACAGCAAGAATGAGGGCAAGAGCGGGAGGTGCTTTC  
 AGCTGCAGCGGCTGCTGGAGTCTCTGTTGCCTTTGGTGCACCAATTGGAGGCGTGCTTTTCAGTCTAGAA  
 GAGGTCAGTTACTACTTTCCCTGAAGACCTTGTGGAGGTCATTTTTCGCAGCCCTGGTGGCGGCCCTTA  
 CGCTGAGATCCATCAATCCCTTTGGGAATAGCCGCTCTCGTTCTCTTTTATGTGGAATACCACAGCCCTG  
 GTACATGGCTGAACCTTCCCTTATCCTGCTTGGGGTCTTCGGGGCTTGTGGGAACCTCTTCATC  
 CGCTGCAACATCGCCTGGTGCAGGAGGGCAAGACCACCAGGCTGGGGAAGTACCCGGTGTGGAGGTCA  
 TTGTGGTACTGCCATCACTGCCATCATTGCCTACCCCAATCCCTACACACGCCAGAGCACCAGCGAGCT  
 CTTTTCTGAGCTGTTCAATGACTGTGGAGCCCTTGAGTCTTCCAGCTCTGTGACTACATCAATGACCCC  
 AACATGACTCGGCCTGTGGATGACATTCAGACCAGCCGGCTGGTGTGGTGTGTTACACGCCATGTGGC  
 AGCTGGCCCTGGCACTGATCTTCAAAATCGTCGTTACCATATTTACCTTTGGCATGAAGATCCCCTCGGG  
 CCTCTTCATCCCCAGCATGGCTGTGGCGCGATAGCGGGCAGGATGGTGGGAATTGGCGTGGAGCAGCTG  
 GCCTACCATCACCATGACTGGATCATCTTCAGGAACTGGTGCAGACCCGGTGCAGACTGTGTACGCCAG  
 GGCTGTACGCAATGGTGGGAGCTGCGGCCTGCCTCGGTGGAGTTACCAGGATGACGGTGTGATTGGTGGT  
 CATCATGTTTGAATTAACCGGGGTCTGGAGTACATCGTCCCTGATGGCGCGGCTGTGACCAGCAAG  
 TGGGTAGCTGATGCATTTGGGAAAGAAGGCATCTACGAGGCCACATCCACTTAAATGGGTACCCTTTCC  
 TTGACGTGAAGGACGAGTTTACTCACCGCACACTGGCCACCGACGTCATGCGGCCCGGGCGGGAGAGCC  
 GCCACTGTGGTGTCTACCCAGGACAGCATGACTGTGAGGACGTTGGAGACGCTCATCAAGGAGACCGAC  
 TACAACGGCTTCCCCTGGTGGTCTCCAGAGACTCCGAGCGCCTCATTGGATTTGCCAGAGGAGGGAAAC  
 TGATTCTCGCAATAAAGAACGCCAGACAGAGGCAGGAGGGCATTGTGAGCAATCCATCATGTACTTCAC  
 GGAGGAACCCCCGAGCTGCCGGCAACAGCCACATCCCCTGAAGCTGCGGGCATCCTGAACCTCAGC  
 CCGTTTACAGTGACAGACCACACTCCGATGGAACGGTGGTGGATATCTCCGAAACTGGGGCTTCGGC  
 AGTGCTGGTGTGACGGGAGCGGGAGACTTCTTGGCATCATCAGAAAAAGGATGTTCTGAGACATATGGC  
 CCAGATGGCAAACCAGGACCCCGAATCCATCATGTTAAT

**ACGCGT**ACGCGGCCGCTCGAGCAGAAACTCATCTCAGAAGAGGATCTGGCAGCAATGATATCCTGGATT  
 ACAAGGATGACGACGATAAGGTTTAA

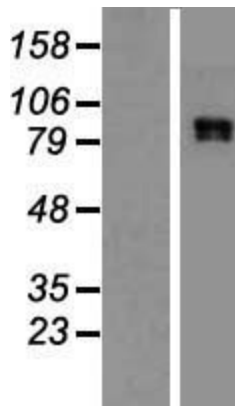


<b>Components:</b>	The ORF clone is ion-exchange column purified and shipped in a 2D barcoded Matrix tube containing 10ug of transfection-ready, dried plasmid DNA (reconstitute with 100 ul of water).
<b>Reconstitution Method:</b>	<ol style="list-style-type: none"><li>1. Centrifuge at 5,000xg for 5min.</li><li>2. Carefully open the tube and add 100ul of sterile water to dissolve the DNA.</li><li>3. Close the tube and incubate for 10 minutes at room temperature.</li><li>4. Briefly vortex the tube and then do a quick spin (less than 5000xg) to concentrate the liquid at the bottom.</li><li>5. Store the suspended plasmid at -20°C. The DNA is stable for at least one year from date of shipping when stored at -20°C.</li></ol>
<b>RefSeq:</b>	<a href="#">NM_001830.4</a>
<b>RefSeq Size:</b>	4562 bp
<b>RefSeq ORF:</b>	2283 bp
<b>Locus ID:</b>	1183
<b>UniProt ID:</b>	<a href="#">P51793</a>
<b>Cytogenetics:</b>	Xp22.2
<b>Domains:</b>	CBS, voltage_CLC
<b>Protein Families:</b>	Druggable Genome, Ion Channels: Other, Transmembrane
<b>MW:</b>	84.7 kDa
<b>Gene Summary:</b>	The CLCN family of voltage-dependent chloride channel genes comprises nine members (CLCN1-7, Ka and Kb) which demonstrate quite diverse functional characteristics while sharing significant sequence homology. Chloride channel 4 has an evolutionary conserved CpG island and is conserved in both mouse and hamster. This gene is mapped in close proximity to APXL (Apical protein <i>Xenopus laevis</i> -like) and OA1 (Ocular albinism type I), which are both located on the human X chromosome at band p22.3. The physiological role of chloride channel 4 remains unknown but may contribute to the pathogenesis of neuronal disorders. Alternate splicing results in two transcript variants that encode different proteins. [provided by RefSeq, Mar 2012]

Product images:



Circular map for RC217040



Western blot validation of overexpression lysate (Cat# [LY419731]) using anti-DDK antibody (Cat# [TA50011-100]). Left: Cell lysates from untransfected HEK293T cells; Right: Cell lysates from HEK293T cells transfected with RC217040 using transfection reagent MegaTran 2.0 (Cat# [TT210002]).