

## Product datasheet for RC217039

### TIM 1 (HAVCR1) (NM\_012206) Human Tagged ORF Clone

#### Product data:

Product Type:	Expression Plasmids
Product Name:	TIM 1 (HAVCR1) (NM_012206) Human Tagged ORF Clone
Tag:	Myc-DDK
Symbol:	TIM 1
Synonyms:	CD365; HAVCR; HAVCR-1; KIM-1; KIM1; TIM; TIM-1; TIM1; TIMD-1; TIMD1
Mammalian Cell Selection:	Neomycin
Vector:	pCMV6-Entry (PS100001)
E. coli Selection:	Kanamycin (25 ug/mL)
ORF Nucleotide Sequence:	>RC217039 representing NM_012206 Red=Cloning site Blue=ORF Green=Tags(s)

TTTTGTAATACGACTCACTATAGGGCGCCGGGAATTCGTCGACTGGATCCGGTACCGAGGAGATCTGCC  
GCC**CGATCGCC**

ATGCATCCTCAAGTGGTCATCTTAAGCCTCATCTACATCTGGCAGATTCTGTAGCTGGTCTGTAAAGG  
TTGGTGGAGAGGCAGGTCCATCTGTCACACTACCTGCCACTACAGTGGAGCTGTCACATCCATGTGCTG  
GAATAGAGGCTCATGTTCTCTATTACATGCCAAAATGGCATTGTCTGGACCAATGGAACCCACGTCACC  
TATCGGAAGGACACACGCTATAAGCTATTGGGGGACCTTCAAGAAGGGATGTCTCTTTGACCATAGAAA  
ATACAGCTGTGTCTGACAGTGGCGTATATTGTTGCCGTGTGAGCACCGTGGGTGGTTCATGACATGAA  
AATCACCGTATCATTGGAGATTGTGCCACCAAGGTCAGGACTACTCCAATTGTCACAACCTGTTCCAACC  
GTCACGACTGTTGCAACGAGCACCCTGTTCCAACGACAACGACTGTTCCAATGACGACTGTTCCAACGA  
CAACTGTTCCAACAACAATGAGCATTCCAACGACAACGACTGTTCTGACGACAATGACTGTTTCAACGAC  
AACGAGCGTTCACGACAACGAGCATTCCAACAACAACAAGTGTCCAGTGACAACAACCTGCTCTACC  
TTTGTCTCCTCAATGCCTTTGCCAGGCAGAACCATGAACCAAGTAGCCACTTCACCATCTTCACCTCAGC  
CAGCAGAAACCCACCCTACGACTGCAGGGAGCAATAAGGAGAGAACCACCAGCTCACCATTGTACTC  
TTACACAACAGATGGGAATGACACCGTGACAGAGTCTTCAGATGGCCTTTGGAATAACAATCAAACCTCAA  
CTGTTCTAGAACATAGTCTACTGACGGCCAATACCCTAAAGGAATCTATGCTGGAGTCTGTATTTCTG  
TCTTGGTGCTTCTGCTTTTTGGGTGTATCATTGCCAAAAGTATTTCTTCAAAAAGGAGGTTCAACA  
ACTAAGTGTTCATTTAGCAGCCTTCAAATTAAGCTTTGCAAAAATGCAGTTGAAAAGGAAGTCCAAGCA  
GAAGACAATATCTACATTGAGAATAGTCTTTATGCCACGGAC

**ACGCGT**ACGCGGCCGCTCGAGCAGAACTCATCTCAGAAGAGGATCTGGCAGCAATGATATCCTGGATT  
ACAAGGATGACGACGATAAGGTTTAA



[View online »](#)

**Protein Sequence:** >RC217039 representing NM\_012206  
Red=Cloning site Green=Tags(s)

MHPQVVILSLILHLADSVAGSVKVGGEAGPSVTL PCHYSGAVTSMCWNRGSCSLFTCQNGIVWTNGTHVT  
 YRKDTRYKLLGDL SRRDVSLTIENTAVSDSGVYCCRVEHRGWFNMDKITVLSLEIVPPKVTTPIVTTVPT  
 VTTVRTSTTVPTTTTVPMTTVP TTTVP TTTMSIPTTTTTLTMTVSTTTSVPTTTSIPTTTSVPVTTTST  
 FVPPMPLPRQNHEPVATSPSSPQPAETHPTTLQGAIRREPTSSPLYSYTTDGNDDVTESDGLWNNNQTK  
 LFLHSLLTANTTKGIYAGVCISVLVLLALLGVIIAKKYFFKKEVQQLSVSFSSQLIKALQNAVEKEVQA  
 EDNIYIENSLYATD

TRTRPLEQKLISEEDLAANDILDYKDDDDKV

**Chromatograms:** [https://cdn.origene.com/chromatograms/mg4170\\_b05.zip](https://cdn.origene.com/chromatograms/mg4170_b05.zip)

**Restriction Sites:** SgfI-MluI

**Cloning Scheme:**



\* The last codon before the Stop codon of the ORF

**ACCN:** NM\_012206

**ORF Size:** 1092 bp

**OTI Disclaimer:** The molecular sequence of this clone aligns with the gene accession number as a point of reference only. However, individual transcript sequences of the same gene can differ through naturally occurring variations (e.g. polymorphisms), each with its own valid existence. This clone is substantially in agreement with the reference, but a complete review of all prevailing variants is recommended prior to use. [More info](#)

**OTI Annotation:** This clone was engineered to express the complete ORF with an expression tag. Expression varies depending on the nature of the gene.

**Components:** The ORF clone is ion-exchange column purified and shipped in a 2D barcoded Matrix tube containing 10ug of transfection-ready, dried plasmid DNA (reconstitute with 100 ul of water).

**Reconstitution Method:**

1. Centrifuge at 5,000xg for 5min.
2. Carefully open the tube and add 100ul of sterile water to dissolve the DNA.
3. Close the tube and incubate for 10 minutes at room temperature.
4. Briefly vortex the tube and then do a quick spin (less than 5000xg) to concentrate the liquid at the bottom.
5. Store the suspended plasmid at -20°C. The DNA is stable for at least one year from date of shipping when stored at -20°C.

**Note:** Plasmids are not sterile. For experiments where strict sterility is required, filtration with 0.22um filter is required.

**RefSeq:** [NM\\_012206.3](#), [NP\\_036338.2](#)

**RefSeq Size:** 1841 bp

**RefSeq ORF:** 1095 bp

**Locus ID:** 26762

**UniProt ID:** [Q96D42](#)

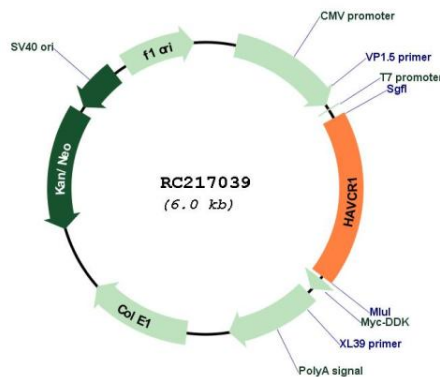
**Cytogenetics:** 5q33.3

**Protein Families:** Druggable Genome, Transmembrane

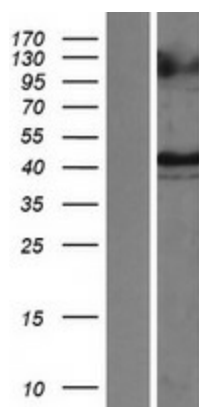
**MW:** 39.25 kDa

**Gene Summary:** The protein encoded by this gene is a membrane receptor for both human hepatitis A virus (HHAV) and TIMD4. The encoded protein may be involved in the moderation of asthma and allergic diseases. The reference genome represents an allele that retains a MTTVP amino acid segment that confers protection against atopy in HHAV seropositive individuals. Alternative splicing of this gene results in multiple transcript variants. Related pseudogenes have been identified on chromosomes 4, 12 and 19. [provided by RefSeq, Apr 2015]

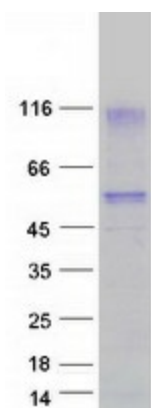
## Product images:



Circular map for RC217039



Western blot validation of overexpression lysate (Cat# [LY420451]) using anti-DDK antibody (Cat# [TA50011-100]). Left: Cell lysates from untransfected HEK293T cells; Right: Cell lysates from HEK293T cells transfected with [RC217289] using transfection reagent MegaTran 2.0 (Cat# [TT210002]).



Coomassie blue staining of purified HAVCR1 protein (Cat# [TP317039]). The protein was produced from HEK293T cells transfected with HAVCR1 cDNA clone (Cat# RC217039) using MegaTran 2.0 (Cat# [TT210002]).