

## Product datasheet for RC217038

### STOX1 (NM\_152709) Human Tagged ORF Clone

#### Product data:

Product Type:	Expression Plasmids
Product Name:	STOX1 (NM_152709) Human Tagged ORF Clone
Tag:	Myc-DDK
Symbol:	STOX1
Synonyms:	C10orf24
Mammalian Cell Selection:	Neomycin
Vector:	pCMV6-Entry (PS100001)
E. coli Selection:	Kanamycin (25 ug/mL)
ORF Nucleotide Sequence:	>RC217038 representing NM_152709 Red=Cloning site Blue=ORF Green=Tags(s)

TTTTGTAATACGACTCACTATAGGGCGGCCGGAATTCGTCGACTGGATCCGGTACCGAGGAGATCTGCCGCCGCGATCGCC

ATGGCCCCGCCGTGCAGCTGGCGCCGGGCTCGCTGGCGCTAGTGCTGTGCCGGCTGGAGGCGCAGAAGG  
CGGCGGGGCGCGGAGGAGCCTGGTGGCGCGCGGTGTTCCGCGCTTCCGTCGCGCAACGCGCGCTG  
CTTCTGGAACGCGCGGCTGGCGCGCGCCCTCGCGGCTGGCCTTCCAGGGCTGGCTGCGGCGGGGGTG  
CTGCTGGTGCAGCGCCCCCGCCTGCCTGCAGGTGCTGCGCGATGCCTGGCGGCGCCGGCCCTGCGGC  
CGCCGCGCGGCTTCCGCATCAGGGCGGTGGGTGATGTCTTCCAGTGCAAATGAATCCAATAACTCAATC  
TCAGTTTCGTACCTTTGGGTGAAGTTCTTTGCTGTGCTATATCTGATATGAATACAGCTCAGATTGTAGTA  
ACGCAGGAATCACTTTTGAGCGTGTGATGAAACATTACCCAGGCATTGCAATCCATCGGAAGATATTC  
TTTATACCACTCTGGAAACGCTGATTAAGAAAGGAAGATTTATCACACTGGAGAAGGATACTTCATAGT  
TACTCCTCAGACTTACTTCAATACAAATACAACCACCCAGGAAAAAAGAGAATGCTGCCATCAGATGAA  
AGTCGCTGATGCCAGCTTCCATGACATATCTGGTGGAGCATGGAGAGCTGTGCAGAGTACAGCCAAAGAGA  
ATGCTGCCCCATATCCCACTGTCAGTCTTCCAGTGTTCGGGACATGCACACTCAGGATGTTACAGGA  
AGCACCAGTTGCTGCAGAAGTACTAGGAAGAGTACAGAGGTCTTGGGAATCCGTATCTTGGGTACAG  
AATGGGCGAGTTTCAGTGTCTGCGGAGCACCACATTTGTGAGAGCACCAAACCTTTACCATACACAAGAG  
ATAAAGAAAAAGCAAGAAGTTTGGTTTTAGTCTTATGGCGCAGCTTATCTAGAAAGGAGAAGCCCAA  
AACAGAACACAGCAGTTTCTCTGCTCAGTTCACCTGAAGAATGGCCCGTCCGAGATGAAGATGACTTG  
GACAATATCCCTCGAGATGTTGAACATGAGATAATCAAACGAATTAACCCATTTTGACTGTTGACAATT  
TAATCAAACACTGTCTAATGCAAAAAACGAAGAACAGAAAAATATAATAGCCAGGGCACTCCAC  
TGACATGCTGACAATCGGCATAAGTATCCTTCAAAGAGGGGTTAAGAAAAGGAGGGTCTGTCTGCA  
AAACCTCAAGGGCAGGGCATTCTGAAGGGATAGACAAAAGCCAGGAATCAGGGAAGTGAGTTTCAGC  
CAGGAAGCATTAGACTGGAGAAACACCCCAAGTCCCTGCTACACAGCCCATCCCAGAATTAAGGCC  
AAATGAAATGGTAGGTCAGAAACCACTTGGTGAGATTACAACAGTCTAGGTTCCCATTTGATTTACAAA



[View online >](#)

AAGCGAATCAGTAATCCTTTCCAGGGTTTGTCTCACCGAGGAAGCACAATATCCAAAGGGCACAAAATTC  
 AGAAGACGAGTGATCTGAAACCCAGCCAGACTGGACCAAAGGAAAAGCCTTTCCAAAAGCCTAGGTCCTT  
 GGATTCCTCAAGAATCTTTGATGGTAAAGCCAAAGAGCCATATGCTGAACAACCTAATGATAAAATGGAA  
 GCAGAATCCATTTACATAAATGACCCTACTGTCAAACCCATCAATGATGACTTCAGAGGTCACCTCTTCA  
 GTCACCCTCAACAGAGCATGTTGCAAAAATGATGGTAAATGCTGTCCCTTTATGGAAAAGCATGTTGAGATA  
 TGAAGTGTATGGTGGAGAAAATGAGGTAATTCCTGAAGTCTTGAGGAAAAGTCATTCCCCTTTGACAAA  
 TTAGGGGAGACCAAACAGACTCCGCATAGTCTGCCATCAGGAGGTGCCTCCTTTTCAGACCGAACCCCT  
 CTGCTTGTAGATTAGTGATAACACAATACACCAGTTTCAAATCTTGGCCTTTTGGATTACCCAGTTGG  
 CGTGAACCCTTTAAGACAAGCTGCAAGACAAGACAAGACTCAGAAGAATTATTGAGAAAAGGATTTGTC  
 CAGGATGCAGAGACTACAAGCCTAGAAAATGAACAGCTTTCTAACGATGACCAGGCCTTGTATCAGAATG  
 AAGTGGAAAGATGATGATGGTGCCTGTAGTTCATTATATCTAGAGGAGGATGACATTTCTGAGAATGACGA  
 CTTACGTCAAATGCTGCCTGGCCACAGTCAGTATTCCTTCACAGGTGGAAGCCAGGGAAATCATTAGGA  
 AAACAAAAGTGATTGAGAGATCTGTACCAGTACAACAGCACAATGGAGAGGGTTGAGTCTCAGGTGC  
 TTTAAAAGAAATGAATGCTACAAACCCACTGGGCTGCATGCTACCCAGGTGAAAGCCAAGAACCTAACCT  
 CTCTGCTGAAAGTTGTGGCTAAATTCAGGGGCCAGTTTGGTTTAACTACGAAGAAGAACCCAGTGTT  
 GCTAAATGTGTACAGGCCTCAGCACCTGCTGATGAAAGAATCTTTGATTACTATAGCGCAAGAAAAGCCA  
 GTTTTGAAGCTGAAGTCATACAAGACACTATTGGTGACACAGGAAAGAAGCCAGCTAGCTGGAGTCAGAG  
 TCCTCAGAATCAGGAAATGAGAAAACATTTCCACAAAAGTTCCAACTTTTCAACTTTCACATATGCCA  
 GTGTTGGCTCAGGATGTCCAATATGAACACAGTCACTTGGAAAGGACAGAAAATCACAGCATGGCAGGAG  
 ATAGTGGAAATAGATTCTCCACGGACACAGAGTCTGGGATCTAATAATTGAGTCAATTTGGATGGACTAAA  
 AAGAAGACAGAATTTTCTGCAAAATGTCGAAGGCACAAAGAGCAGTCAACCACTCACATCTAATTCCTTA  
 CTACCGCTAACTCCAGTCATAAACGTT

ACGCGTACGCGGCCGCTCGAGCAGAACTCATCTCAGAAGAGGATCTGGCAGCAAATGATATCCTGGATT  
 ACAAGGATGACGACGAT AAGGTTTAA

**Protein Sequence:**

>RC217038 representing NM\_152709  
 Red=Cloning site Green=Tags(s)

MARPVQLAPGSLALVLCRLEAQKAAGAAEPEGGRAVFRFRANARCFWNARLARAASRLAFQGWLRRGV  
 LLVRAPPAQLQLRDAWRRRALRPPRGFRIRAVGDVFPVQMNPIITQSQFVPLGEVLCCLAI SDMNTAQIVV  
 TQESLLERLMKHYPGIAIPSEDILYTTLGTLIKERKIYHTGEGYFIVTPQTYFITNTTQENKRMLPSDE  
 SRLMPASMTYLVSMECAESAQENAAPI SHCQSCQCFRDMHTQDVQEAPVAAEVTRKSHRGLGESVSWVQ  
 NGAVSVSAEHHICESTKPLPYTRDKEKGGKFGFSLWRSLSRKEKPKTEHSSFSAQFPPEEWPVRDEDDL  
 DNIPRDVEHEI IKRINPILTVDNLIKHTVLMQKYEEQKKYNSQGTSDMLTIGHKYSKEGVKKRQGLSA  
 KPQGGHRRDRHKARNQSEFQPGSIRLEKHPKLPATQPIPRIKSPNEMVQKPLGEITTVLGSHLIYK  
 KRISNPFQGLSHRGSTISKGHKIQKTSDLKPSQTPGPEKPFQKPRSLDSSRIFDGKAKEPYAEQPNDKME  
 AESIYINDPTVKPINDDFRGLFSHPQQSMLQNDGKCCPFMESMLRYEVYGGENEVIPEVLRKSHSHFDK  
 LGETKQTPHSLPSRGASFSDRTPSACRLVDNTIHQFQNLGLLDYPVGVNPLRQAARQDKDSEELLRKG  
 QDAETTSLENEQLSNDDQALYQNEVEDDDGACSSLYLEDDISENDDL RQMLPGHSQYSFTGGSQGNHLG  
 KQKVIERSL TEYNSTMERVESQVLKRNECYKPTGLHATPGESQEPNL SAESCGLNSGAQFGFN YEEEPSV  
 AKCVQASAPADERIFDYYSARKASFEAEVIQDTIGDTGKKPASWSQPQNQEMRKHFPQKQFLFNTSHMP  
 VLAQDVQYEHSHLEGTENHSMAGDSGIDSPRTQSLGSNNSVILDGLKRRQNFLQNVGKSSQPLTSNSL  
 LPLTPVINV

TRTRPLEQKLI SEEDLAANDILDYKDDDDKV

**Chromatograms:**

[https://cdn.origene.com/chromatograms/mk8017\\_h08.zip](https://cdn.origene.com/chromatograms/mk8017_h08.zip)

**Restriction Sites:**

Sgfl-MluI

**Cloning Scheme:**


**ACCN:** NM\_152709

**ORF Size:** 2967 bp

**OTI Disclaimer:** The molecular sequence of this clone aligns with the gene accession number as a point of reference only. However, individual transcript sequences of the same gene can differ through naturally occurring variations (e.g. polymorphisms), each with its own valid existence. This clone is substantially in agreement with the reference, but a complete review of all prevailing variants is recommended prior to use. [More info](#)

**OTI Annotation:** This clone was engineered to express the complete ORF with an expression tag. Expression varies depending on the nature of the gene.

**Components:** The ORF clone is ion-exchange column purified and shipped in a 2D barcoded Matrix tube containing 10ug of transfection-ready, dried plasmid DNA (reconstitute with 100 ul of water).

- Reconstitution Method:**
1. Centrifuge at 5,000xg for 5min.
  2. Carefully open the tube and add 100ul of sterile water to dissolve the DNA.
  3. Close the tube and incubate for 10 minutes at room temperature.
  4. Briefly vortex the tube and then do a quick spin (less than 5000xg) to concentrate the liquid at the bottom.
  5. Store the suspended plasmid at -20°C. The DNA is stable for at least one year from date of shipping when stored at -20°C.

**RefSeq:** [NM\\_152709.5](#)

**RefSeq Size:** 3293 bp

**RefSeq ORF:** 2970 bp

Locus ID: 219736

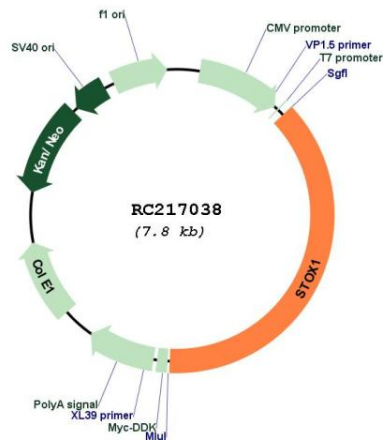
UniProt ID: [Q6ZVD7](#)

Cytogenetics: 10q22.1

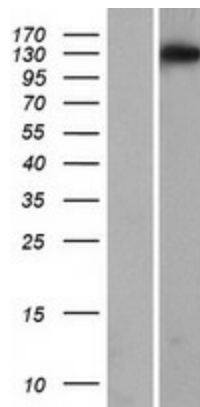
MW: 110.8 kDa

**Gene Summary:** The protein encoded by this gene may function as a DNA binding protein. Mutations in this gene are associated with pre-eclampsia/eclampsia 4 (PEE4). Alternatively spliced transcript variants encoding different isoforms have been found for this gene. [provided by RefSeq, Sep 2009]

### Product images:



Circular map for RC217038



Western blot validation of overexpression lysate (Cat# [LY407351]) using anti-DDK antibody (Cat# [TA50011-100]). Left: Cell lysates from untransfected HEK293T cells; Right: Cell lysates from HEK293T cells transfected with RC217038 using transfection reagent MegaTran 2.0 (Cat# [TT210002]).