

## Product datasheet for **RC217035**

### Neuropilin 1 (NRP1) (NM\_003873) Human Tagged ORF Clone

#### Product data:

Product Type:	Expression Plasmids
Product Name:	Neuropilin 1 (NRP1) (NM_003873) Human Tagged ORF Clone
Tag:	Myc-DDK
Symbol:	Neuropilin 1
Synonyms:	BDCA4; CD304; NP1; NRP; VEGF165R
Mammalian Cell Selection:	Neomycin
Vector:	pCMV6-Entry (PS100001)
E. coli Selection:	Kanamycin (25 ug/mL)



[View online »](#)

**ORF Nucleotide Sequence:**

>RC217035 representing NM\_003873  
 Red=Cloning site Blue=ORF Green=Tags(s)

TTTTGTAATACGACTCACTATAGGGCGGCCGGGAATTCGTCGACTGGATCCGGTACCGAGGAGATCTGCC  
 GCC**CGCATCGCC**

ATGGAGAGGGGGCTGCCGCTCCTCTGCGCCGTGCTCGCCCTCGTCTCGCCCCGGCCGGCGCTTTTCGCA  
 ACGATAAATGTGGCGATACTATAAAAAATTGAAAGCCCCGGGTACCTTACATCTCCTGTTATCCTCATT  
 TTATCACCCAAGTGAAAAATGCGAATGGCTGATTGAGGCTCCGGACCCATACCAGAGAATTATGATCAAC  
 TTCAACCCTCACTTCGATTTGGAGGACAGAGACTGCAAGTATGACTACGTGGAAGCTTCGATGGAGAAA  
 ATGAAAAATGGACATTTTAGGGGAAAGTTCTGTGAAAGATAGCCCTCCTCCTGTTGTGCTTCAGGGCC  
 ATTTCTTTTTATCAAATTTGCTCTGACTACGAAACACATGGTGCAGGATTTCCATACGTTATGAACTT  
 TTCAAGAGAGGTCCTGAATGTTCCGAACTACACAACACCTAGTGGAGTGATAAAGTCCCCGGATTCC  
 CTGAAAAATATCCCAACAGCCTGAATGCACTTATATTGCTTTTGCCTCAAGATGTCAGAGATTATCCT  
 GGATTTGAAAGCTTTGACCTGGAGCCTGACTCAAATCCTCCAGGGGGGATGTTCTGTGCTACGACCGG  
 CTAGAAATCTGGGATGGATTCCCTGATGTTGGCCCTCACATTGGGCGTACTGTGGACAGAAAACACCAG  
 GTCGAATCCGATCCTCATCGGGCATTCTCTCATGGTTTTTACACCGACAGCGGATAGCAAAAGAAGG  
 TTTCTCAGCAAATACAGTGTCTTGACAGCAGTGTCTCAGAAGATTTCAAATGTATGGAAGCTCTGGGC  
 ATGGAATCAGGAGAAATTCATTCTGACCAGATCACAGTCTTCCAGTATAGCACCAACTGGTCTGCAG  
 AGCGCTCCCGCTGAACTACCCTGAGAAATGGGTGGACTCCCGGAGAGGATTCCTACCGAGAGTGGATACA  
 GGTAGACTTGGCCTTCTGCGCTTTGTACGGCTGTGGGACACAGGGCGCCATTTCAAAGAAACCAAG  
 AAGAAATATTATGTCAAGACTTACAAGATCGACGTTAGCTCCAACGGGGAAGACTGGATCACCATAAAAG  
 AAGGAAACAAACCTGTTCTTTTCAGGGAAACACCAACCCTACAGATGTTGTGGTGCAGTATCCCCAA  
 ACCACTGATAACTCGATTTGTCGGAATCAAGCCTGCAACTGGGAACTGGCATATCTATGAGATTTGAA  
 GTATATGGTTGCAAGATAACAGATTATCCTTGCTCTGGAATGTTGGGTATGGTGTCTGGACTTATTTCTG  
 ACTCCCAGATCACATCATCCAACCAAGGGGACAGAACTGGATGCCTGAAAACATCCGCCTGGTAACCAG  
 TCGCTCTGGCTGGGCACTTCCACCCGCACCTCATTCTACATCAATGAGTGGCTCCAAATAGACCTGGGG  
 GAGGAGAAGATCGTGAGGGGCATCATCATTGAGGTGGGAAGCACCGAGAGAACAAGGTGTTTCATGAGGA  
 AGTTCAAGATCGGTACAGCAACAACGGCTCGGACTGGAAGATGATCATGGATGACAGCAACGCAAGGC  
 GAAGTCTTTTGGGGCAACAACAATATGATACACCTGAGCTGCGGACTTTTCCAGCTCTCTCCACGCGA  
 TTCATCAGGATCTACCCGAGAGAGCCACTCATGGCGGACTGGGGCTCAGAAATGGAGCTGCTGGGCTGTG  
 AAGTGGAAAGCCCTACAGCTGGACCGACCACTCCAACGGGAAGTGGTGGATGAATGTGATGACGACCA  
 GGCAACTGCCACAGTGGAAACAGGTGATGACTTCCAGCTCACAGGTGGCACCCTGTGCTGGCCACAGAA  
 AAGCCACGGTCAAGACAGCACCATACAATCAGAGTTTCCAACATATGGTTTTAACTGTGAATTTGGCT  
 GGGGCTCTCACAAGACCTTCTGCCACTGGGAACATGACAAACACGTGCAGCTCAAGTGGAGTGTGTTGAC  
 CAGCAAGACGGGACCCATTGAGGATCACACAGGAGATGGCAACTCATCTATCCCAAGCTGACGAAAAAT  
 CAGAAGGGCAAAGTGGCTCGCTGGTGGCCCTGTGGTTTATCCAGAACTCTGCCACTGCATGACCT  
 TCTGGTATCACATGTCTGGTCCCACGTGGCACACTCAGGTCAAACCTGCGCTACCAGAAGCCAGAGGA  
 GTACGATCAGCTGGTCTGGATGGCCATTGGACACCAAGGTGACCACTGGAAGGAAGGGCGTCTTGGCT  
 CACAAGTCTCTGAACTTTATCAGGTGATTTTCGAGGGCGAAATCGGAAAAGGAAACCTTGGTGGGATTG  
 CTGTGGATGACATTAGTATTAATAACCACATTTACAAGAAGATTGTGAAAACAGCAGACCTGGATAA  
 AAAGAACCAGAAATTAATTTGATGAAACAGGGAGCACGCCAGGATACGAAGGTGAAGGAGAAGGTGAC  
 AAGAACATCTCCAGGAAGCCAGGCAATGTGTTGAAGACCTTAGACCCCATCTCATCACCATCATAGCCA  
 TGAGCGCCCTGGGGTCTCCTGGGGCTGTCTGTGGGGTGTGCTGTACTGTGCTGTTGGCATAATGG  
 GATGTCAGAAAGAACTTGTCTGCCCTGGAGAATAACTTTGAACTTGTGGATGGTGTGAAGTTGAAA  
 AAAGACAACTGAATACACAGACTTATTTCGGAGGCA

**ACGCGT**ACGCGGCCGCTCGAGCAGAACTCATCTCAGAAGAGGATCTGGCAGCAAATGATATCCTGGATT  
 ACAAGGATGACGACGATAAAGTTTAA

**Protein Sequence:** >RC217035 representing NM\_003873  
 Red=Cloning site Green=Tags(s)

```
MERGLPLLCAVLALVLAPAGAFRNDKCGDTIKIESPYL TSPGYPHSYHPSEKCEWLIQAPDPYQRIMIN
FNPHFDLEDRDCKYDYVEVFDGENENGFHFRGKFCGKIAPPPVSSGPFLLIKFVSDYETHGAGFSIRYEL
FKRGPECSQNYTTPSGVIKSPGFPEKYPNLSLECTYIVFAPKMSIILEFESFDLEPDSNPPGGMFCRYDR
LEIWDGFPDVGPHIGRYCGQKTPGRIRSSSGILSMVFYTDIAIAKEGFSANYSVLQSSVSEDFKCMALG
MESGEIHSQDQITASSQYSTNWSAERSRLNYPENGWTPGEDSYREWIQVDLGLLRFVTAVGTQGAISKETK
KKYVVKTYKIDVSSNGEDWITIKEGNKPVLFQGNTNPTD VVAVFPKPLITRFVRIKPATWETGISMRFE
VYGCKITDYPGSGMLGMVSLISDSQITSSNQDRNWMPENIRL VTSRSGWALPPAPHSYINEWLQIDLG
EEKIVRGI IQGKHKRENKVFMRKFKIGYSNNGSDWKIMDDSKRKAKSFE GNNNYDTPELRTFPALSTR
FIRIYPERATHGGLGRMELLGCEVEAPTAGPTTPNGNLVDE CDDQANCHSGTGDDFQLTGTTVLATE
KPTVIDSTIQSEFPTYGFNCFGWGSHKTFCHWEHDNHVQLKWSVLT SGTGPIQDHTGDGNFIYSQADEN
QKQKVARLVSPVYVYQNSAHCMTFWYHMSGSHVGLRVLKRYQKPEEYDQLVWMAIGHQGDHWKEGRVLL
HKSLKLYQVIFEGEIGKGNLGGIAVDDISINNHISQEDCAKPADL DKKNPEIKIDETGSTPGYEGEGEGD
KNISRKPGNVLKTLDPILITIIAMSALGVLLGAVCGVVLYCACW HNGMSERNLSALENYNFELVDGVKLL
KDKLNTQSTYSEA
```

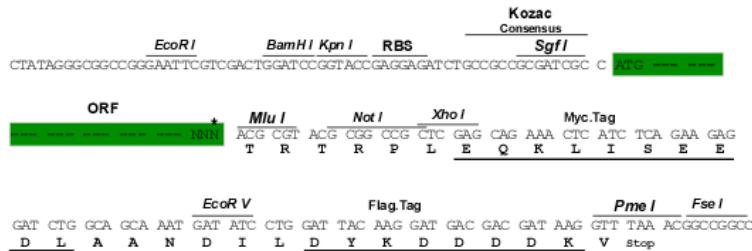
TRTRPLEQKLISEEDLAANDILDYKDDDDKV

**Chromatograms:** [https://cdn.origene.com/chromatograms/mk6124\\_a05.zip](https://cdn.origene.com/chromatograms/mk6124_a05.zip)

**Restriction Sites:** SgfI-MluI

**Cloning Scheme:**

Cloning sites used for ORF Shuttling:



\* The last codon before the Stop codon of the ORF

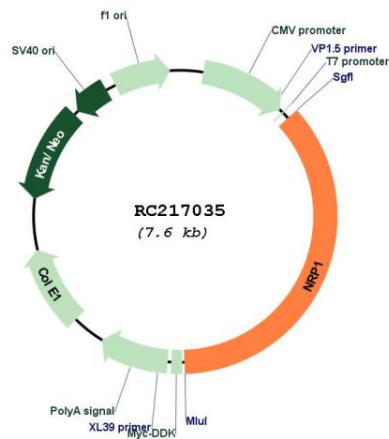
**ACCN:** NM\_003873

**ORF Size:** 2769 bp

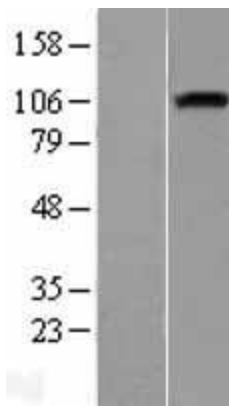
<b>OTI Disclaimer:</b>	Due to the inherent nature of this plasmid, standard methods to replicate additional amounts of DNA in E. coli are highly likely to result in mutations and/or rearrangements. Therefore, OriGene does not guarantee the capability to replicate this plasmid DNA. Additional amounts of DNA can be purchased from OriGene with batch-specific, full-sequence verification at a reduced cost. Please contact our customer care team at <a href="mailto:custsupport@origene.com">custsupport@origene.com</a> or by calling 301.340.3188 option 3 for pricing and delivery.
	The molecular sequence of this clone aligns with the gene accession number as a point of reference only. However, individual transcript sequences of the same gene can differ through naturally occurring variations (e.g. polymorphisms), each with its own valid existence. This clone is substantially in agreement with the reference, but a complete review of all prevailing variants is recommended prior to use. <a href="#">More info</a>
<b>OTI Annotation:</b>	This clone was engineered to express the complete ORF with an expression tag. Expression varies depending on the nature of the gene.
<b>Components:</b>	The ORF clone is ion-exchange column purified and shipped in a 2D barcoded Matrix tube containing 10ug of transfection-ready, dried plasmid DNA (reconstitute with 100 ul of water).
<b>Reconstitution Method:</b>	<ol style="list-style-type: none"> <li>1. Centrifuge at 5,000xg for 5min.</li> <li>2. Carefully open the tube and add 100ul of sterile water to dissolve the DNA.</li> <li>3. Close the tube and incubate for 10 minutes at room temperature.</li> <li>4. Briefly vortex the tube and then do a quick spin (less than 5000xg) to concentrate the liquid at the bottom.</li> <li>5. Store the suspended plasmid at -20°C. The DNA is stable for at least one year from date of shipping when stored at -20°C.</li> </ol>
<b>Note:</b>	Plasmids are not sterile. For experiments where strict sterility is required, filtration with 0.22um filter is required.
<b>RefSeq:</b>	<a href="#">NM_003873.7</a>
<b>RefSeq Size:</b>	5890 bp
<b>RefSeq ORF:</b>	2772 bp
<b>Locus ID:</b>	8829
<b>UniProt ID:</b>	<a href="#">O14786</a>
<b>Cytogenetics:</b>	10p11.22
<b>Domains:</b>	F5_F8_type_C, CUB, MAM
<b>Protein Families:</b>	Druggable Genome, Secreted Protein, Transmembrane
<b>Protein Pathways:</b>	Axon guidance
<b>MW:</b>	102.9 kDa

**Gene Summary:**

This gene encodes one of two neuropilins, which contain specific protein domains which allow them to participate in several different types of signaling pathways that control cell migration. Neuropilins contain a large N-terminal extracellular domain, made up of complement-binding, coagulation factor V/VIII, and meprin domains. These proteins also contains a short membrane-spanning domain and a small cytoplasmic domain. Neuropilins bind many ligands and various types of co-receptors; they affect cell survival, migration, and attraction. Some of the ligands and co-receptors bound by neuropilins are vascular endothelial growth factor (VEGF) and semaphorin family members. This protein has also been determined to act as a co-receptor for SARS-CoV-2 (which causes COVID-19) to infect host cells. [provided by RefSeq, Nov 2020]

**Product images:**


Circular map for RC217035



Western blot validation of overexpression lysate (Cat# [LY401276]) using anti-DDK antibody (Cat# [TA50011-100]). Left: Cell lysates from untransfected HEK293T cells; Right: Cell lysates from HEK293T cells transfected with RC217035 using transfection reagent MegaTran 2.0 (Cat# [TT210002]).