

## Product datasheet for RC217034

### PLAGL1 (NM\_001080955) Human Tagged ORF Clone

#### Product data:

Product Type:	Expression Plasmids
Product Name:	PLAGL1 (NM_001080955) Human Tagged ORF Clone
Tag:	Myc-DDK
Symbol:	PLAGL1
Synonyms:	LOT1; ZAC; ZAC1
Mammalian Cell Selection:	Neomycin
Vector:	pCMV6-Entry (PS100001)
E. coli Selection:	Kanamycin (25 ug/mL)
ORF Nucleotide Sequence:	>RC217034 representing NM_001080955 Red=Cloning site Blue=ORF Green=Tags(s)

TTTTGTAATACGACTCACTATAGGGCGGCCGGAATTCGTCGACTGGATCCGGTACCGAGGAGATCTGCC  
GCC**CGATCGC**C

ATGGCTACCCATTCTCCCCAGAAATCTCACCAGTGTGCTCACTGTGAGAAGACGTTCAACCGAAAGACC  
ACCTGAAAAACCACCTCCAGACCCACGACCCCAACAAAATGGCCTTTGGGTGTGAGGAGTGTGGGAAGAA  
GTACAACACCATGCTGGGCTATAAGAGGCACCTGGCCCTCCATGCGGCCAGCAGTGGGGACCTCACCTGT  
GGGTCTGTGCCCTGGAGCTAGGGAGCACCGAGGTGCTACTGGACCACCTCAAAGCCCATCGGAAGAGA  
AGCCCCCTAGCGAACCAAGGAAAAGAAGCACCAGTGCAGCCACTGTGAAAGATGCTTCTACACCCGGAA  
GGATGTGCGACGCCACCTGGTGGTCCACACAGGATGCAAGGACTTCTGTGCCAGTCTGTGCCAGAGA  
TTTGGGCGCAAGGATCACCTCACCCGGCATACCAAGAAGACCCACTCACAGGAGCTGATGAAAGAGAGCT  
TGACAGACCCGAGACCTTCTGAGCACCTTCCACACCATCTCGCCTTCATTCCAACCTGAAGGCTGTGCCTT  
GCCTCCTTTCCCTTAGGAGCTTCTGCCAGAACGGGCTTGAAGTAGCTTGCCAGCTGAGGTCCATAGC  
CTCACCTCAGTCCCCAGAACAAGCCGCCAGCCTATGCAGCCGCTGCCAGAGTCCCTGGCCTCCCTCC  
ACCCCTCGGTATCCCCTGGCTCTCTCCGCCACCCTTCCAATCACAAGTACAACACCACTTCTACCTC  
ATACTCCCACCTGCAAGCCTGCCCTCAAAGCAGATACTAAAGTTTTTGCAATATCAGTTTGTGTTGAG  
GACTTGCTCTGCAAGACCTCAGTCACCTCAAAGCTCAACCCAGGTTTTGATCTGGCTAAGGGAAATG  
CTGGTAAAGTAAACCTGCCAAGGAGCTGCCTGCAGATGCTGTGAACCTAACAATACCTGCCTCTCTGGA  
CCTGTCCCCCTGTTGGGCTTCTGGCAGCTGCCCCCTCCTGTACCCAAAATACCTTTGGGAATAGCACT  
CTTGCCCTGGGGCTGGGAATCTTTGCCCCACAGGTTAAGCTGTCTGGGGCAGCAGCAGCAAGAACCC  
CACTTGCCATGGGCACTGTGAGCCTGGGCCAGCTCCCCCTGCCCCCATCCCTCATGTGTTCTCAGCTGG  
CACTGGCTCTGCCATCCTGCCTCATTTCCATCATGCATTGAGA

**ACGGT**ACGGCGCCGCTCGAGCAGAAACTCATCTCAGAAGAGGATCTGGCAGCAAATGATATCTGGATT  
ACAAGGATGACGACGATAAGGTTTAA



[View online »](#)

**Protein Sequence:** >RC217034 representing NM\_001080955  
Red=Cloning site Green=Tags(s)

MATHSPQKSHQCAHCEKTFNRKDHLKNHLQTHDPNKMAFGCEECGKKYNTMLGYKRHLALHAASSGDLTC  
 GVCALLEGSTEVLLDHLKAHAEEKPPSGTKEKKHQCDHCERCIFYTRKDVRRLVVTGCKDFLCQFCAQR  
 FGRKDHLTRHTKKTHSQELMKESLQTGDLLSTFHTISPSFQLKAAALPPFPLGASAQNGLASSLPAEVHS  
 LTLSPPEQAAQPMQPLPESLASLHPSVSPGSPPPPLPNHKYNTTSTYSPLASLPLKADTKGFCNISLFE  
 DLPLQEPQSPQKLNPGFDLAKGNAGKVNLPKELPADAVNLTIPASLDLSPLLGFWQLPPPATQNTFGNST  
 LALGPGESLPHRLSCLGQQQEPPPLAMGTVSLGQLPLPPIPHVF SAGTGSAILPHFHAFR

TRTRPLEQKLISEEDLAANDILDYKDDDDKV

**Chromatograms:** [https://cdn.origene.com/chromatograms/mk6446\\_h09.zip](https://cdn.origene.com/chromatograms/mk6446_h09.zip)

**Restriction Sites:** SgfI-MluI

**Cloning Scheme:**



**ACCN:** NM\_001080955

**ORF Size:** 1233 bp

**OTI Disclaimer:** The molecular sequence of this clone aligns with the gene accession number as a point of reference only. However, individual transcript sequences of the same gene can differ through naturally occurring variations (e.g. polymorphisms), each with its own valid existence. This clone is substantially in agreement with the reference, but a complete review of all prevailing variants is recommended prior to use. [More info](#)

**OTI Annotation:** This clone was engineered to express the complete ORF with an expression tag. Expression varies depending on the nature of the gene.

**Components:** The ORF clone is ion-exchange column purified and shipped in a 2D barcoded Matrix tube containing 10ug of transfection-ready, dried plasmid DNA (reconstitute with 100 ul of water).

**Reconstitution Method:**

1. Centrifuge at 5,000xg for 5min.
2. Carefully open the tube and add 100ul of sterile water to dissolve the DNA.
3. Close the tube and incubate for 10 minutes at room temperature.
4. Briefly vortex the tube and then do a quick spin (less than 5000xg) to concentrate the liquid at the bottom.
5. Store the suspended plasmid at -20°C. The DNA is stable for at least one year from date of shipping when stored at -20°C.

**RefSeq:** [NM\\_001080955.3](#)

**RefSeq Size:** 2733 bp

**RefSeq ORF:** 1236 bp

**Locus ID:** 5325

**UniProt ID:** [Q9UM63](#)

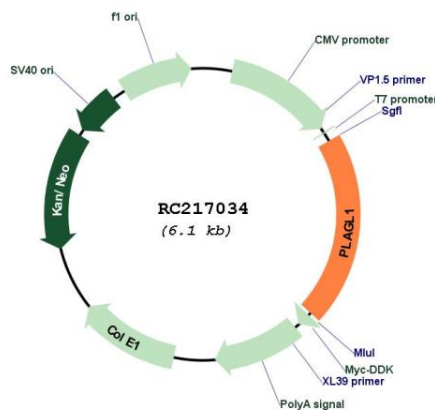
**Cytogenetics:** 6q24.2

**Protein Families:** Transcription Factors

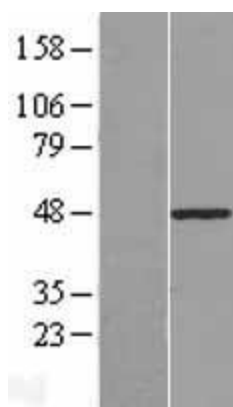
**MW:** 44.5 kDa

**Gene Summary:** This gene encodes a C2H2 zinc finger protein that functions as a suppressor of cell growth. This gene is often deleted or methylated and silenced in cancer cells. In addition, overexpression of this gene during fetal development is thought to be the causal factor for transient neonatal diabetes mellitus (TNDM). Alternative splicing and the use of alternative promoters results in multiple transcript variants encoding two different protein isoforms. The P1 downstream promoter of this gene is imprinted, with preferential expression from the paternal allele in many tissues. [provided by RefSeq, Nov 2015]

### Product images:



Circular map for RC217034



Western blot validation of overexpression lysate (Cat# [LY421140]) using anti-DDK antibody (Cat# [TA50011-100]). Left: Cell lysates from untransfected HEK293T cells; Right: Cell lysates from HEK293T cells transfected with [RC223573] using transfection reagent MegaTran 2.0 (Cat# [TT210002]).