

Product datasheet for RC217032

CRCP (NM_014478) Human Tagged ORF Clone

Product data:

Product Type: Expression Plasmids
Product Name: CRCP (NM_014478) Human Tagged ORF Clone
Tag: Myc-DDK
Symbol: CRCP
Synonyms: C17; CGRP-RCP; CGRPRCP; POLR3I; POLR3J; RCP; RCP9; RPC9
Mammalian Cell Selection: Neomycin
Vector: pCMV6-Entry (PS100001)
E. coli Selection: Kanamycin (25 ug/mL)
ORF Nucleotide Sequence: >RC217032 representing NM_014478
 Red=Cloning site Blue=ORF Green=Tags(s)

TTTTGTAATACGACTCACTATAGGGCGGCCGGAATTCGTCGACTGGATCCGGTACCGAGGAGATCTGCC
GCC**CGATCGCC**

ATGGAAGTGAAGGATGCCAATTCTGCGCTTCTCAGTAACTACGAGGTATTCAGTTACTAACTGATCTGA
AAGAGCAGCGTAAAGAAAGTGGAAAGAATAAACACAGCTCTGGGCAACAGAACTTGAACACTATCACCTA
TGAAACGTTAAAATACATATCAAAAACACCATGCAGGCACCAGAGTCCTGAAATTGTCAGAGAATTTCTC
ACAGCATTGAAAAGCCACAAGTTGACCAAAGCTGAGAAGCTCCAGCTGCTGAACCACCGCCTGTGACTG
CTGTGGAGATCCAGCTGATGGTGAAGAGAGTGAAGAGCGGCTCACGGAGGAGCAGATTGAAGCTTCT
CCACACCGTCACCAGCATTCTGCCTGCAGAGCCAGAGGCTGAGCAGAAGAAGAATACAAACAGCAATGTG
GCAATGGACGAAGAGGACCCAGCA

ACGCGTACGCGGCCGCTCGAGCAGAACTCATCTCAGAAGAGGATCTGGCAGCAAATGATATCCTGGATT
ACAAGGATGACGACGATAAGGTTTAA

Protein Sequence: >RC217032 representing NM_014478
 Red=Cloning site Green=Tags(s)

MEVKDANSALLSNYEVFQLLTDLKEQRKESGKNKHSSGQQLNTITYETLKYISKTPCRHQSPDIVREFL
TALKSHKLTKAELQLLNHRPVTAVEIQLMVEESEERL TEEQIEALLHTVTSILPAEPEAEQKNTNSNV
AMDEEDPA

TRTRPLEQKLISEEDLAANDILDYKDDDDKV

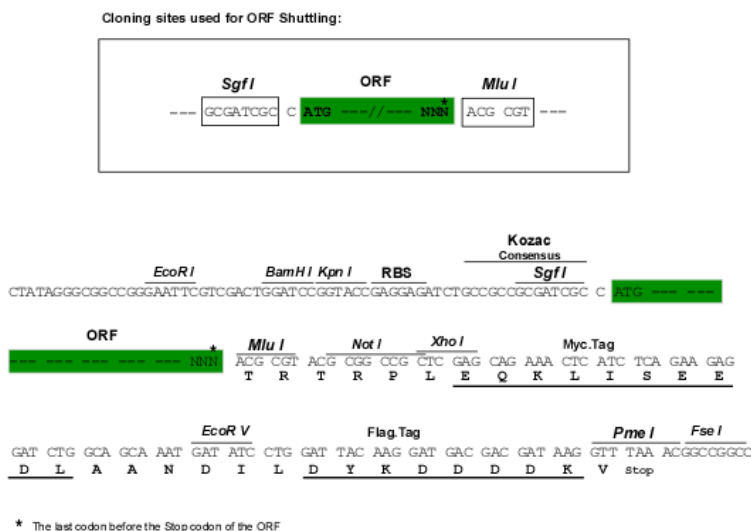
Chromatograms: https://cdn.origene.com/chromatograms/mk6487_b07.zip



[View online »](#)

Restriction Sites: SgfI-MluI

Cloning Scheme:



ACCN: NM_014478

ORF Size: 444 bp

OTI Disclaimer: The molecular sequence of this clone aligns with the gene accession number as a point of reference only. However, individual transcript sequences of the same gene can differ through naturally occurring variations (e.g. polymorphisms), each with its own valid existence. This clone is substantially in agreement with the reference, but a complete review of all prevailing variants is recommended prior to use. [More info](#)

OTI Annotation: This clone was engineered to express the complete ORF with an expression tag. Expression varies depending on the nature of the gene.

Components: The ORF clone is ion-exchange column purified and shipped in a 2D barcoded Matrix tube containing 10ug of transfection-ready, dried plasmid DNA (reconstitute with 100 ul of water).

Reconstitution Method:

1. Centrifuge at 5,000xg for 5min.
2. Carefully open the tube and add 100ul of sterile water to dissolve the DNA.
3. Close the tube and incubate for 10 minutes at room temperature.
4. Briefly vortex the tube and then do a quick spin (less than 5000xg) to concentrate the liquid at the bottom.
5. Store the suspended plasmid at -20°C. The DNA is stable for at least one year from date of shipping when stored at -20°C.

RefSeq: [NM_014478.5](#)

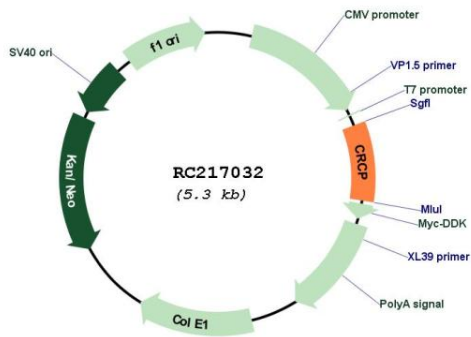
RefSeq Size: 1048 bp

RefSeq ORF: 447 bp

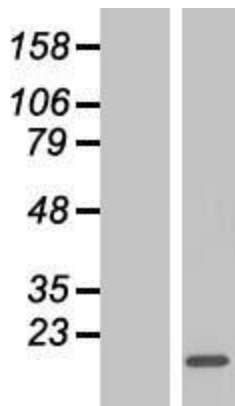
Locus ID: 27297

UniProt ID: [O75575](#)
Cytogenetics: 7q11.21
Domains: RPOL4c
Protein Families: Druggable Genome
MW: 16.7 kDa
Gene Summary: This gene encodes a membrane protein that functions as part of a receptor complex for a small neuropeptide that increases intracellular cAMP levels. Alternate transcriptional splice variants, encoding different isoforms, have been characterized. [provided by RefSeq, Jul 2008]

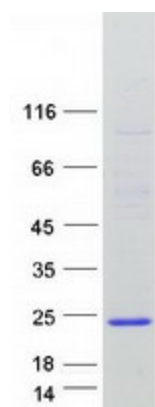
Product images:



Circular map for RC217032



Western blot validation of overexpression lysate (Cat# [LY415237]) using anti-DDK antibody (Cat# [TA50011-100]). Left: Cell lysates from untransfected HEK293T cells; Right: Cell lysates from HEK293T cells transfected with RC217032 using transfection reagent MegaTran 2.0 (Cat# [TT210002]).



Coomassie blue staining of purified CRCP protein (Cat# [TP317032]). The protein was produced from HEK293T cells transfected with CRCP cDNA clone (Cat# RC217032) using MegaTran 2.0 (Cat# [TT210002]).