

## Product datasheet for **RC217025**

### **PDE9A (NM\_001001575) Human Tagged ORF Clone**

#### **Product data:**

Product Type:	Expression Plasmids
Product Name:	PDE9A (NM_001001575) Human Tagged ORF Clone
Tag:	Myc-DDK
Symbol:	PDE9A
Synonyms:	HSPDE9A2
Mammalian Cell Selection:	Neomycin
Vector:	pCMV6-Entry (PS100001)
E. coli Selection:	Kanamycin (25 ug/mL)



[View online »](#)

**ORF Nucleotide Sequence:**

>RC217025 representing NM\_001001575  
 Red=Cloning site Blue=ORF Green=Tags(s)

TTTTGTAATACGACTCACTATAGGGCGGCCGGAATTCGTCGACTGGATCCGGTACCGAGGAGATCTGCC  
 GCC**CGCATCGCC**

ATGGACGCATTAGAAGAGCATTAAAAATCAATGAACTGAAAGCTGAAGTTGCAATCACTTGGCTGTCC  
 TAGAGAAAACGCGTGAATTGGAAGGACTAAAAGTGGTGGAGATTGAGAAAATGCAAGAGTGACATTAAGAA  
 GATGAGGGAGGAGCTGGCGGCCAGAAGCAGCAGGACCAACTGCCCTGTAAGTACAGTTTTTTGGATAAC  
 CACAAGAAGTTGACTCCTCGACGCGATGTTCCCACTTACCCCAAGTACCTGCTCTCTCCAGAGACCATCG  
 AGGCCCTGCGGAAGCCGACCTTTGACGTCTGGCTTTGGGAGCCCAATGAGATGCTGAGCTGCCTGGAGCA  
 CATGTACCACGACCTCGGGCTGGTCAGGGACTTCAGCATCAACCCTGTCACCCTCAGGAGGTGGCTGTTT  
 TGGCTCCACGACAACACAGAAAACACCCCTTCCACAACCTCCGGCACTGCTTCTGCGTGGCCAGATGA  
 TGTACAGCATGGTCTGGCTCTGCAGTCTCCAGGAGAAGTTCTCACAAACGGATATCTGATCCTAATGAC  
 AGCGGCCATCTGCCACGATCTGGACCATCCCGGTACAACAACAGTACCAGATCAATGCCCGCACAGAG  
 CTGGCGGTCCGCTACAATGACATCTCACCGCTGGAGAACCACCACTGCGCCGTGGCTTCCAGATCCTCG  
 CCGAGCCTGAGTGCAACATCTTCTCCAACATCCCACCTGATGGGTCAAGCAGATCCGACAGGGAATGAT  
 CACATTAATCTTGGCCACTGACATGGCAAGACATGCAGAAATATGGATTCTTTCAAAGAGAAAAATGGAG  
 AATTTTGACTACAGCAACGAGGAGCACATGACCCTGCTGAAGATGATTTTGATAAAATGCTGTGATATCT  
 CTAACGAGGTCCGTCCAATGGAAGTCGACAGGCCTTGGGTGGACTGTTTTATTAGAGGAATATTTTATGCA  
 GAGCGACCGTGAGAAGTCAGAAGGCCTTCTGTGGCACCCTTTCATGGACCGAGACAAAGTGACCAAGGCC  
 ACAGCCCAGATTGGGTTTCATCAAGTTTGCCTGATCCCAATGTTTGAACAGTGACCAAGCTCTTCCCA  
 TGGTTGAGGAGATCATGCTGCAGCCACTTTGGGAATCCCGAGATCGCTACGAGGAGCTGAAGCGGATAGA  
 TGACGCCATGAAAGAGTTACAGAAGAAGACTGACAGCTTGGGGCCACCGAGAAGTCCAGAGAG  
 AGAAGCAGAGATGTGAAAAACAGTGAAGGAGACTGTGCC

AC**CGGCCCGC**TCGAGCAGAAACTCATCTCAGAAGAGGATCTGGCAGCAAATGATATCCTGGA  
 TTACAAGGATGACGACGATAAGGTTTAA

**Protein Sequence:**

>RC217025 representing NM\_001001575  
 Red=Cloning site Green=Tags(s)

MDAFRRAFKINELKAEVANHLAVLEKRVELEGLKVVEIEKCKSDIKKMREELAARSSRTNCPCKYSFLDN  
 HKKLTPRRDVPTYPKYLLSPETIEALRKPTFDVWLWEPNEMLSLEHMYHDLGLVRDFSINPVTLRRWLF  
 CVHDNYRNNPFHFRHFCVAQMMYSMVWLSLQEKFSQTDILILMTAAICHDLDPGYNNYQINARTE  
 LAVRYNDISPLENHHCAVAFQILAEPECNIFSNIPPDGFKQIRQGMITLILATDMARHAEIMDSFKEKME  
 NFDYSNEEHMTLLKMILIKCCDISNEVRPMEVAEPWVDCLLEEYFMQSDREKSEGLPVAPFMDRDKVTKA  
 TAQIGFIKFVLIIPMFETVTKLFPVVEIMLQPLWESRDREELKRIDDAMKELQKKTDSLTSGATEKSRE  
 RSRDVKNSEGDCA

**TRRLEQKLI**SEEDLAANDILDYKDDDDKV

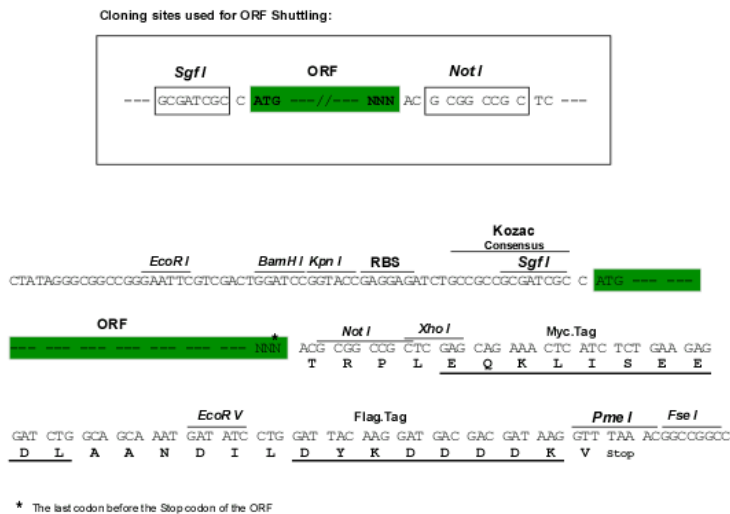
**Chromatograms:**

[https://cdn.origene.com/chromatograms/mk8059\\_f02.zip](https://cdn.origene.com/chromatograms/mk8059_f02.zip)

**Restriction Sites:**

Sgfl-NotI

Cloning Scheme:



ACCN: NM\_001001575

ORF Size: 1299 bp

OTI Disclaimer: The molecular sequence of this clone aligns with the gene accession number as a point of reference only. However, individual transcript sequences of the same gene can differ through naturally occurring variations (e.g. polymorphisms), each with its own valid existence. This clone is substantially in agreement with the reference, but a complete review of all prevailing variants is recommended prior to use. [More info](#)

OTI Annotation: This clone was engineered to express the complete ORF with an expression tag. Expression varies depending on the nature of the gene.

Components: The ORF clone is ion-exchange column purified and shipped in a 2D barcoded Matrix tube containing 10ug of transfection-ready, dried plasmid DNA (reconstitute with 100 ul of water).

Reconstitution Method:

1. Centrifuge at 5,000xg for 5min.
2. Carefully open the tube and add 100ul of sterile water to dissolve the DNA.
3. Close the tube and incubate for 10 minutes at room temperature.
4. Briefly vortex the tube and then do a quick spin (less than 5000xg) to concentrate the liquid at the bottom.
5. Store the suspended plasmid at -20°C. The DNA is stable for at least one year from date of shipping when stored at -20°C.

RefSeq: [NM\\_001001575.1](#), [NP\\_001001575.1](#)

RefSeq Size: 1675 bp

RefSeq ORF: 1302 bp

Locus ID: 5152

UniProt ID: [O76083](#)

Cytogenetics: 21q22.3

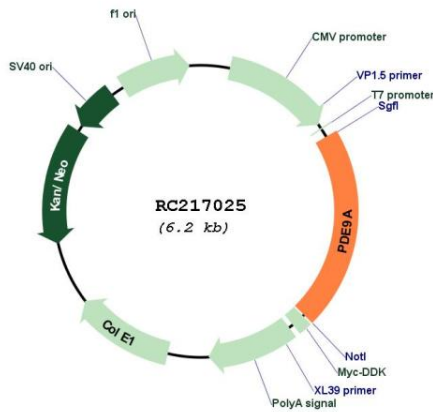
**Protein Families:** Druggable Genome

**Protein Pathways:** Progesterone-mediated oocyte maturation, Purine metabolism

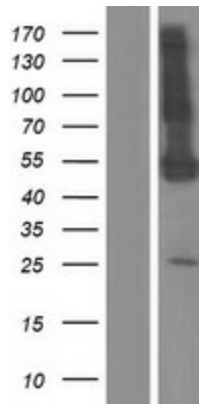
**MW:** 50.5 kDa

**Gene Summary:** The protein encoded by this gene catalyzes the hydrolysis of cAMP and cGMP to their corresponding monophosphates. The encoded protein plays a role in signal transduction by regulating the intracellular concentration of these cyclic nucleotides. Multiple transcript variants encoding several different isoforms have been found for this gene. [provided by RefSeq, Jul 2008]

**Product images:**



Circular map for RC217025



Western blot validation of overexpression lysate (Cat# [LY424392]) using anti-DDK antibody (Cat# [TA50011-100]). Left: Cell lysates from untransfected HEK293T cells; Right: Cell lysates from HEK293T cells transfected with RC217025 using transfection reagent MegaTran 2.0 (Cat# [TT210002]).