

Product datasheet for RC217020

RBFOX1 (NM_145893) Human Tagged ORF Clone

Product data:

| | |
|---------------------------|---|
| Product Type: | Expression Plasmids |
| Product Name: | RBFOX1 (NM_145893) Human Tagged ORF Clone |
| Tag: | Myc-DDK |
| Symbol: | RBFOX1 |
| Synonyms: | 2BP1; A2BP1; FOX-1; FOX1; HRNBP1 |
| Mammalian Cell Selection: | Neomycin |
| Vector: | pCMV6-Entry (PS100001) |
| E. coli Selection: | Kanamycin (25 ug/mL) |
| ORF Nucleotide Sequence: | >RC217020 representing NM_145893 Red=Cloning site Blue=ORF Green=Tags(s) |

TTTTGTAATACGACTCACTATAGGGCGCCGGGAATTCGTCGACTGGATCCGGTACCGAGGAGATCTGCC
GCC**CGGATCGCC**

ATGCTGGCGTCTCAAGGAGTTCTCCTGCATCCTTATGGCGTGCCTATGATTGTACCGGCAGCTCCTTACC
TTCCTGGACTGATTCAGGGTAATCAGGAAGCAGCCGCTGCCCTGACACAATGGCTCAGCCTTACGCTTC
GGCCAGTTTGTCCCCGCAGAACGGTATCCCCGCGGAATACACGGCCCTCATCCCCACCCCGGCCA
GAGTACACAGGCCAGACCAGGTTCCCGAGCACACATTAACCTGTACCCTCCCGCCAGACGCACTCCG
AGCAGAGCCCGGGGACACGAGCGCTCAGACCGTCTCTGGCACCACACAGACAGATGACGCAGCACC
GACGGATGGCCAGCCCCAGACACAACCTTCTGAAAACACGGAAAACAAGTCTCAGCCAAGCGGCTGCAT
GTCTCCAATATCCCTTCAGGTTCCGGGATCCGGACCTCAGACAAATGTTTGGTCAATTTGGTAAAACT
TAGATGTTGAAATATTTTTAATGAGCGAGGCTCAAAGGGATTTGGTTTCGTAACCTTTCGAAAATAGTGC
CGATGCGGACAGGGCGAGGGAGAAATTACACGGCACCGTGGTAGAGGGCCGTAATAATCGAGGTAAATAAT
GCCACAGCACGTGTAATGACAAATAAAAAGACCGTCAACCCTTATACAAATGGCTGGAAATTGAATCCAG
TTGTGGGTGCAGTCTACAGTCCCGAATTCTATGCAGGCACGGTCTGTGTGCCAGGCCAACAGGAGGG
ATCTTCCATGTACAGTCCCCAGTTCACCTTGTATATACTTCTGCAATGCCAGGCTTCCCGTATCCAGCA
GCCACCCGCGCGCCCGCTACCGAGGGGCGCACCTGCGAGGCCGCGGTGCGACCGGTGACAAACACCTTCA
GGCCCGCGCGCCCCCGCCCCGATCCCCGGCTACGGCGGAGTAGTGATCAAGAGCCTGTGTATGGCAA
TAAATTGCTGCAGGGTGGTTATGCTGCATACCGCTACGCCAGCCTACCCTGCCACTGCCGCTGCCTAC
AGTGACAGAAATCAGTTCGTTCTCGTTGCAGCAGATGAAATTTCTGTAAACCTCTGCAGTTACGGACG
AGTTTATGCTGCCGACCCTACCACCACGCACTTGTCCAGCCCCACCTACGGCGTTGGTGCCA

ACGCGTACGCGGCCGCTCGAGCAGAAACTCATCTCAGAAGAGGATCTGGCAGCAATGATATCCTGGATT
ACAAGGATGACGACGATAAGGTTTAA



[View online »](#)

Protein Sequence: >RC217020 representing NM_145893
Red=Cloning site Green=Tags(s)

MLASQGVLLHPYGVPMIVPAAPYLPGLIQGNQEAAPDTMAQPYASAQFAPPQNGIPAEYTAPHPHPAP
 EYTGQTTVPEHTLNLYPQAQTHSEQSPADTSAQTVSGTATQTDAAPTDGQPQTQPSSENTENKSQPKRLH
 VSNIPFRFRDPLRQMFQGFQKILDVEIIFNERGSKGFGFVTFENSADADRAREKLHGTVVEGRKIEVNN
 ATARVMTNKKTVNPNYTNWKLNPVVGAVYSPEFYAGTVLLCQANQEGSSMYSAPSSLVYTSAMPGFPYPA
 ATAAAAYRGAHLRGRGRVYNTFRAAAAPPPPIPAYGGVYQEPVYGNKLLQGGYAAARYAQPTPATAAAAY
 SDRNQFVFVAADEISCNTSAVTDEFMLPTPTTHLLQPPPTALVP

TRTRPLEQKLISEEDLAANDILDYKDDDDKV

Chromatograms: https://cdn.origene.com/chromatograms/mk6767_g11.zip

Restriction Sites: SgfI-MluI

Cloning Scheme:



* The last codon before the Stop codon of the ORF

ACCN: NM_145893

ORF Size: 1185 bp

OTI Disclaimer: The molecular sequence of this clone aligns with the gene accession number as a point of reference only. However, individual transcript sequences of the same gene can differ through naturally occurring variations (e.g. polymorphisms), each with its own valid existence. This clone is substantially in agreement with the reference, but a complete review of all prevailing variants is recommended prior to use. [More info](#)

OTI Annotation: This clone was engineered to express the complete ORF with an expression tag. Expression varies depending on the nature of the gene.

Components: The ORF clone is ion-exchange column purified and shipped in a 2D barcoded Matrix tube containing 10ug of transfection-ready, dried plasmid DNA (reconstitute with 100 ul of water).

Reconstitution Method:

1. Centrifuge at 5,000xg for 5min.
2. Carefully open the tube and add 100ul of sterile water to dissolve the DNA.
3. Close the tube and incubate for 10 minutes at room temperature.
4. Briefly vortex the tube and then do a quick spin (less than 5000xg) to concentrate the liquid at the bottom.
5. Store the suspended plasmid at -20°C. The DNA is stable for at least one year from date of shipping when stored at -20°C.

Note: Plasmids are not sterile. For experiments where strict sterility is required, filtration with 0.22um filter is required.

RefSeq: [NM_145893.3](#)

RefSeq Size: 3315 bp

RefSeq ORF: 1188 bp

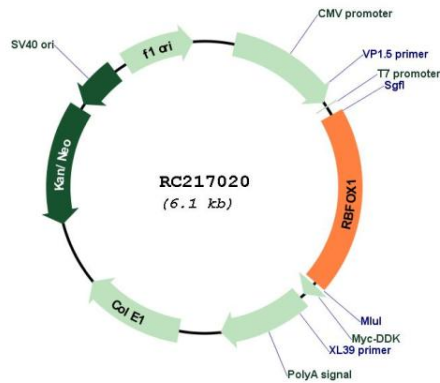
Locus ID: 54715

UniProt ID: [Q9NWB1](#)

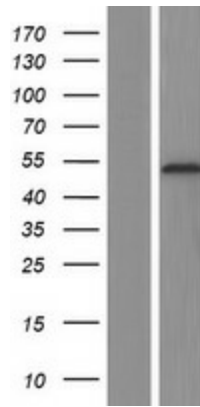
Cytogenetics: 16p13.3

MW: 42.2 kDa

Gene Summary: The Fox-1 family of RNA-binding proteins is evolutionarily conserved, and regulates tissue-specific alternative splicing in metazoa. Fox-1 recognizes a (U)GCAUG stretch in regulated exons or in flanking introns. The protein binds to the C-terminus of ataxin-2 and may contribute to the restricted pathology of spinocerebellar ataxia type 2 (SCA2). Ataxin-2 is the product of the SCA2 gene which causes familial neurodegenerative diseases. Fox-1 and ataxin-2 are both localized in the trans-Golgi network. Several alternatively spliced transcript variants encoding different isoforms have been found for this gene. [provided by RefSeq, Nov 2011]

Product images:


Circular map for RC217020



Western blot validation of overexpression lysate (Cat# [LY407831]) using anti-DDK antibody (Cat# [TA50011-100]). Left: Cell lysates from untransfected HEK293T cells; Right: Cell lysates from HEK293T cells transfected with RC217020 using transfection reagent MegaTran 2.0 (Cat# [TT210002]).